



In this issue:

Conference on heritage and archaeology of Proença-a-Nova
Geology in Summer across Naturtejo Geopark
Purebred Lusitano Horse Show in the Geo Stud Farm
Summer Tours on Naturtejo Geopark in partnership with the Tour Operator Barco del Tajo
...and more!

CRUZIANA

GEOPARK NATURTEJO DA MESETA MERIDIONAL - UNESCO GLOBAL GEOPARK - E-MAGAZINE



Organização
das Nações Unidas
para a Educação,
Ciência e Cultura



Naturtejo da Meseta Meridional
Geoparque
Mundial da
UNESCO



GEO-stories of our places and people: Proença-a-Nova

Proença-a-Nova, in the transition between the Iberian Central Mountain Range and the Southern Plateau, is fresh water that goes down the mountain in the summer heat wave. We are in lands of shale and greywacke, rising up to 960 m altitude. However, these rocks were once deep sea in a remote time when there were not yet beings with more than one cell. From the great Geomorphologic Viewpoint in Corgas we can read the marks left by Variscan Orogeny, particularly in the Appalachian forms of Talhadas. Alpine orogenic movements led to the uplift of the North region of Proença-a-Nova and quickly installed a dense network of dendritic drainage flowing the waters towards the Tagus River. Proença-a-Nova is a vast territory, with 143,8km², made of mountains, small plains, a lot of valleys and also many small villages, spinning around the town, with a total of 4295 inhabitants. It is an ancient settlement: here we find 18 tombs and dolmens. Some have been revealing recently its secrets through excavations made by the International Archaeological Field in Proença-a-Nova. Cabeço da Anta Tomb with its 40 meters diameter stands for its monumentality, but also for the amount of new data obtained by the Association for Studies of High Tagus. This is associated to Vale do Alvito and Cão do Ribeiro Dolmens to mark the thematic walking trail "History in the Landscape". The Letters Rock carries us to other cognitive domains of indigenous peoples.

The village snuggles in an open and elevated valley and is the hub of a vast region. The vast majority of the existing tourism starts in or occurs in the surrounding area of Proença-a-Nova. The river beaches of Malhadal and Aldeia Ruiva, both in Isna River, attract both locals and visitors; the black poplars along Aldeia Ruiva are protected as living monuments and the riparian gallery is a place for tree adventures. This interesting place gains its name from the alluvial red coloured deposits that can be found at the entrance of the "Red Village". In Malhadal, the traditional architecture was recovered for tourism. Figueira is a Pearl of shale, a small place full of community experiences, once closed to the world for defence against the wolves that come down the mountains and raged through cattle. And today, we eat a great roast lamb in the community oven! In Moitas the airfield brings huge potential for aerial sports yet to explore in any "Red Bull" event. The small mill in Pergulho doesn't cease to amaze in the winds of change of a society living at broadband speed. With organic, vegetable architecture, the Living Science Forest Centre of Proença-a-Nova distinguishes itself in the territory of Naturtejo Geopark by bringing experimental science to the streets of the villages and local fairs. The Centre is a place for interaction, with three galleries filled with games and appealing activities to all ages. And this is exactly the enduring idea to those who visit Proença-a-Nova...

GEO-stories of our places and people: Proença-a-Nova

Bibliography

ASSUNÇÃO VILHENA, M. (1995) – Gentes da Beira Baixa. Aspectos etnográficos do concelho de Proença-a-Nova. Ed. Colibri, 436 pp.

CABRAL, J. (1995) – Neotectónica em Portugal Continental. Memórias do Instituto Geológico e Mineiro, 31, 265p.

CATARINO, M.A. (1933) - Monografia do concelho de Proença-a-Nova.

HENRIQUES, F., CANINAS, J., MONTEIRO, M., FÉLIX, P., PEREIRA, A., MENDES, C., & CARVALHO, E. (2016). Arqueologia de Proença-a-Nova: estado dos conhecimentos. In R. Vilaça (Ed.), II Congresso Internacional de Arqueologia da Região de Castelo Branco, RVJ Editores, Castelo Branco, 447-474.

LOBARINHAS CARVALHO, D. (2011) – Inventariação da geodiversidade da região das Portas de Almourão (Vila Velha de Ródão e Proença-a-Nova, Geopark Naturtejo da Meseta Meridional): contribuição para a sua inclusão na Rede Nacional de Áreas Protegidas. Açafa Online, 4: 84pp+54pp.

LOBARINHAS, D., RODRIGUES, J., BRILHA, J. & NETO DE CARVALHO, C. (2010) – Inventariação do património geológico da região das Portas de Almourão (Vila Velha de Ródão e Proença-a-Nova, Geopark Naturtejo). E-Terra, 17(13): 1-4.

Neto de Carvalho, C. & Rodrigues, J. (2012) – Património Geológico de Proença-a-Nova: caracterização e gestão no âmbito do Geopark Naturtejo. Açafa Online, 5: 178-230.

Geologist
Cover: (Projecto Objectiva: Geopark)

The editor
Carlos Neto de Carvalho
Scientific coordinator



MONTHLY ACTIVITIES

1 August - Visit to Portas de Almourão. In the context of another edition of the International Archaeological Field of Proença-a-Nova, students and officials visited the geomonument Portas de Almourão. Joana Rodrigues made an introduction to Geodiversity and geological history on the site, and discussed its heritage importance, the site protection status, the legal framework of the geological heritage in comparison to the archaeological heritage. Other topics were also addressed as values of the natural and cultural heritage on Portas de Almourão, the possible impacts of the construction of Alvito dam, visitation infrastructures, and others.



4 August -Geology on summer through Castelo Branco. Once again Naturtejo Geopark joined the Living Science Forest Centre to organize living science activities on summer, with several dissemination actions of Geology.

The action "Urban Geology of Castelo Branco: what if stones could speak?" led to meet nooks and stories with millions of years in the city centre, under a strong heat wave. The participants interpreted the materials of monuments, statues, and buildings to discover the Geodiversity of the region of Castelo Branco, other parts of the country, its geological history and the action that the weather agents have on the rocks and other geological resources, with the Geologist Joana Rodrigues.



4, 11, 18 and 25 August - Summer Tours on Naturtejo Geopark in partnership with Barco del Tajo.

4, 11, 18 and 25 August – Summer Tours on Naturtejo Geopark in partnership with Barco del Tajo. Several Spanish groups sailed along the Tagus River to Alcántara (Spain) and crossed the border headed to Naturtejo Unesco Global Geopark, to walk the Boulders Trail in Monsanto and the Fossils Trail in Penha Garcia. There was still time to regain energy diving into Pego pool in Penha Garcia. 102 people came for these programmes and were accompanied by the Geopark Guides Jorge Costa and Rui Nunes.



8 to 12 August – Naturtejo Geopark represented in the Pinewood Fair at Oleiros. Oleiros held another edition of the annual Pinewood Fair, this year dedicated to the reforestation of the areas affected by last year's fires. Naturtejo Geopark was present once again with a small promotional stand. The fair was inaugurated by the Secretary of State for Forests and Rural Development, who has been following closely Naturtejo Geopark's work and seized the moment visiting the geopark's booth to ask for suggestions for places to visit nearby. This year, Fair visitors were challenged to contact directly with the craftsmen, through the Cultural Passport, and also left many confidence messages, "written in a tree" on Oleiros' stand and had the opportunity to donate trees to reforest Oleiros.



10 to 12 August – Purebred Lusitano Horse Show in Penha Garcia. Purebred Lusitano Horse Show took place in Penha Garcia and was promoted by the Geo Stud Farm Manuel Teixeira. This event was attended by both national and foreign breeders and held workshops on nutrition, husbandry, health, competition and breed standard. The aim was promoting the PSL Horse and the preservation of its genetic heritage, raise awareness on the breeders work and sharing experiences, involving the community and visitors.

During the opening ceremony Armindo Jacinto handed a Naturtejo Geopark's Partner Plaque and the Diploma to the Geo Stud Farm, emphasising the importance to preserve the Pure Lusitano Horse, the work done by focusing on the animal welfare, following strict rules to preserve the breed, the enormous contribution to promote local identity and the importance the horse has having in the local activities throughout the ages, mainly in grazing or smuggling. He also issued a challenge for future activities with partner Geoparks. Around 20 breeders attended the show, Stud Farms from Naturtejo Geopark's territory namely from Idanha-a-Nova, Penamacor and Castelo Branco.

The Geologist Joana Rodrigues highlighted the importance of Purebred Lusitano Horse as evidence of horses' evolution, the presence of the horse in Portuguese fossil records and its framework in Naturtejo Geopark. In 2018 the Geo Stud Farm won 5 silver medals, 4 gold ones and 1 Male Champion title.

11 August – Conference on Heritage and Archaeology in the Municipality of Proença-a-Nova: results of the Archaeological Camp.

“Heritage and Archaeology in the Municipality of Proença-a-Nova” was the theme of the conference which received specialists who have been contributing on the International Archaeological Camp of Proença-a-Nova (CAIPN). The goal was to present a summary on the main findings on the intervened sites, emphasis to the dolmen Cabeço da Anta assumed to be one the largest in the District of Castelo Branco.

CAIPN's Director, João Caninas, spoke about megalithic graves as indicators of an extensive settlement in the territory of Proença-a-Nova, focusing on the core of Moitas (apart from this dolmen, also includes the dolmens of Alvito and Cão do Ribeiro). António Correia, Geophysicist at University of Évora, presented preliminary results of geophysical prospection made in the dolmen of Anta; José Mirão, Geologist on Hercules Lab, spoke about the chemical and mineralogical composition of Moitas dolmen's clay. Pedro Batista, archaeologist, examined the original source of construction materials of this megalithic grave, a work made in partnership with the Geologist Carlos Neto de Carvalho.

As for the other investigated archaeological sites along the seven editions of archaeological Field, the archaeologist Mário Monteiro presented the Defensive Line of Talhadas Moradal: Batarias, the project and the results, focusing on the excavations which led to the preparation to visit Batarias Fort, in Catraia Cimeira. The Archaeologist Paulo Félix spoke about the proto-historic settlement in Proença-a-Nova, the excavations in the walled enclosure Chão do Galego and the ongoing in Chão do Trigo Castle. The Archaeologist Francisco Henriques talked about archaeology and heritage of Proença-a-Nova, in a more general presentation.

The remaining interventions in the Conference were related to the field practice that uses, in some cases, innovative methods, such as Alcaide-Archaeological management system, which was presented by Gonçalo Ferreira, Informatics and Archaeologist. Hugo Pires, researcher and SIG specialist, gave a presentation on 3D scanning in archaeological interventions of CAIPN, from horizontal alignment registration to micro-morphological analysis of surfaces, and Luis Bravo, an expert in multispectral photography, from FAUP, addressed the photography technique applied to the cave painting in Proença-a-Nova, visible radiation, infrared, ultraviolet and spectral images.

The Conference ended with a visit to the archaeological collection obtained during the study of the dolmen Cão do Ribeiro. This Conference was open to all of those who wanted to learn more about the heritage in the municipality of Proença-a-Nova.



11 August – Geology in summer in the Ichnological Park of Penha Garcia.

11 August - Geology in summer in the Ichnological Park of Penha Garcia. Naturtejo Geopark and the Living Science Forest Centre promoted Geology in Summer activity on the Fossils Trail in Penha Garcia. After a walk through the Fossils Trail where traces of primitive oceans from 480 million years ago were explored, and the role of Hydro Energy in the mills where the Ponsul water transformed cereals into flour, all participants get their hand in the dough to make fossils shaped cookies baked in a solar oven. This action was led by Joana Rodrigues from Naturtejo Geopark, Marta Palhim, Edite Fernandes and Patrícia Cristóvão from the Living Science Forest Centre.



24 August - Summer concert in the Geomonument of Penha Garcia. The Ichnological Park in Penha Garcia hosted a summer concert, with violin and guitar viola together with sounds of Penha Garcia. This Summer Concert took place in Lapa, a natural quartzite auditorium, with excellent acoustics and, as the President of Naturtejo Geopark Armindo Jacinto highlighted, where the Naturtejo Geopark project was born in 2003.

25 August - Geology on Summer finds gold in Portas de Almourão. "Gold in Portas de Almourão", another Geology on summer activity, in which the participants wear the skin of a gold prospector for one day, on the banks of the Ocreza River, searching for gold accompanied by Marta Palhim from the Living Science Forest Centre.

26 August - Night theatrical ride with "Diabolic". On the magical Inselberg of Monsanto ran one more night ride with "Diabolic". Organized by the partner company Geo-Life and supported by Naturtejo Geopark, this walk offers the discovery of legendary creatures of Monsanto where they are known to be found. The participants had the opportunity to hear the "Stories" in the first person until the Sunrise, always gorgeous from the top of the templar castle, also full of legends.

IMPACT OF GEOPARK IN MEDIA



Newspapers & www

- July (Lonely Planet China) - Portugal between mountains (in Mandarin)
- July (Outdoor Exploration – Chinese Market) – The Natural Parks in Portugal (in Mandarin)
- August (Oleiros Magazine) – Zêzere Atelier cheered Cambas
- August (Oleiros Magazine) – Orvalho Geotrail gets cleaner
- 1 August (Reconquista) - CCVF promotes several summer activities
- 2 August (Reconquista) – Americans in Naturtejo territory – University Students visited the Geopark
- 7 August (Fórum Covilhã) – Zêzere valued in Cambas
- 8 August (Povo da Beira) – Cambas received Zêzere Atelier
- 8 August (Gazeta do Interior) – American University Students visited Naturtejo Geopark
- 8 August (Gazeta do Interior) – Zêzere River valued with activity held in Cambas
- 9 August (Reconquista) – Cambas gathers more than 180

PROMOTION FOR THE GENERAL PUBLIC



I FESTIVAL DE
GEOTURISMO
Portas de Ródão
 Vila Velha de Ródão
16 SET. 2018 | Cais do Ródão | 9h às 18h

Atividades Outdoor

Palestras nas Portas de Ródão (barco)
 Com a presença de Naturtejo - Carlos Neto de Carvalho e AEAT - a designar

Inscrições no local

Atividades GRATUITAS

Nota: Todas as atividades serão acompanhadas por uma equipa profissional de monitores

Mais informações em: www.cri-vivodaop.pt

2018
 a época
TRILHOS DOS GRIFOS
 Gavião de Ródão

TRAIL LONGO até 31 maio 14€ até 31 agosto 17€ até 23 set. 19€ <small>INSCRIÇÃO</small>	TRAIL CURTO até 31 maio 12€ até 31 agosto 15€ até 23 set. 17€ <small>INSCRIÇÃO</small>	CAMINHADA até 31 maio 10€ até 31 agosto 11€ até 23 set. 12€ <small>INSCRIÇÃO</small>
---	---	---

30 de Setembro | Vila Velha de Ródão
35 KM TRAIL LONGO 20 KM TRAIL CURTO 10 KM CAMINHADA

PADRINHOS:
 Helena Silvestre | Luís Simões

Inscrições:
<http://www.prozis.com/trilhosdosgrifos>
 937 281 911 | 967 695 463
 Mais informações: trilhosdosgrifos@gmail.com

TrilhosGrifos

exposição *exhibition*

A FLORESTA QUE NOS UNE
united by the forest

GRUTAS DA MOEDA
 SÃO MAMEDE

JULHO *July* **ABRIL** *April* 2019

PROMOTION FOR THE GENERAL PUBLIC



**CASA DAS
CIÊNCIAS**

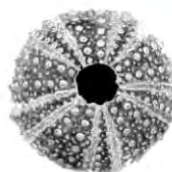
EDULOG - FUNDAÇÃO BELMIRO DE AZEVEDO

I ENCONTRO DA CASA
DAS CIÊNCIAS - AÇORES

uma iniciativa da Casa das Ciências

PONTA DELGADA, 6 E 7 DE SETEMBRO DE 2018

A Educação Científica e a Tecnologia do Século XXI



A visita opcional de formação científica/educacional, pós-congresso tem o apoio de:



Visit Naturtejo Geopark in:



www.geoparknaturtejo.com



www.facebook.com/geoparknaturtejo.mesetameridional



www.instagram.com/geopark_naturtejo/



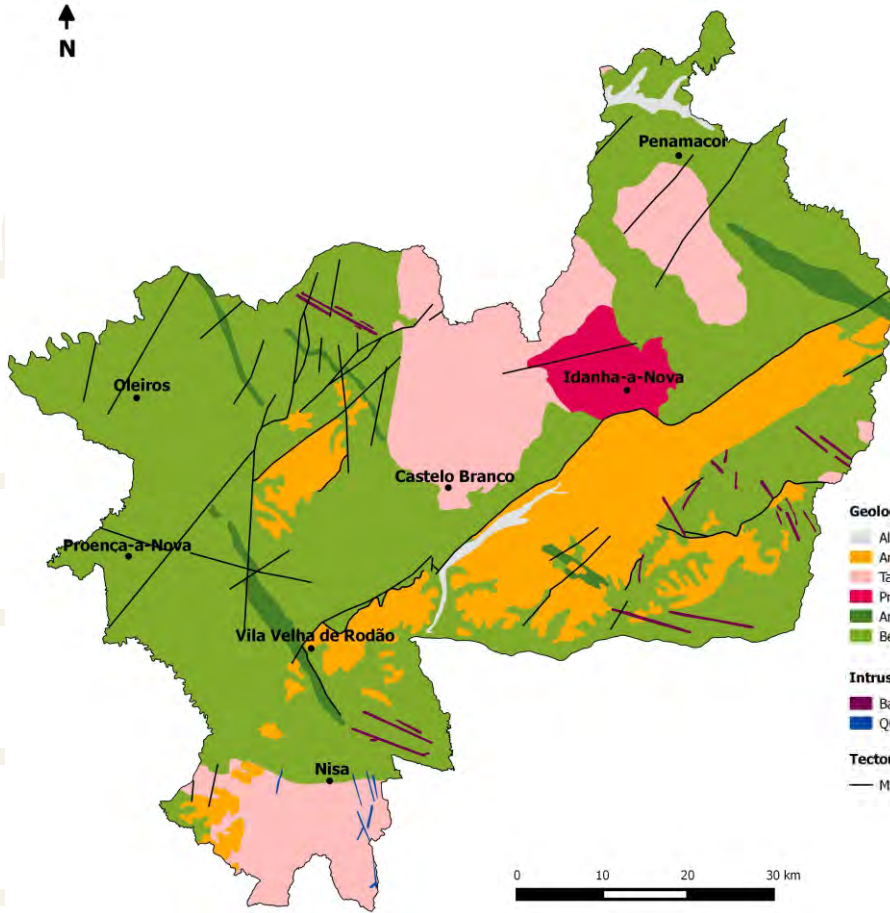
www.youtube.com/geoparknaturtejo



issuu.com/geoparknaturtejo



www.slideshare.net/geoparknaturtejomesetameridional



Geological Formations (Ma-Million years)

- Alluvium and fluvial terraces - Plistocene-Holocene (1Ma-present)
- Arkoses, breccias and conglomerates - Eocene-Pliocene (50-2.6Ma)
- Tardi-Variscan orogenic granites (315-300Ma)
- Pre-Variscan granodiorites (480-472Ma)
- Armorican Quartzite and schists - Ordovician-Lower Silurian (488-435Ma)
- Beiras Group (schists and greywackes) - Neoproterozoic (610-542Ma)

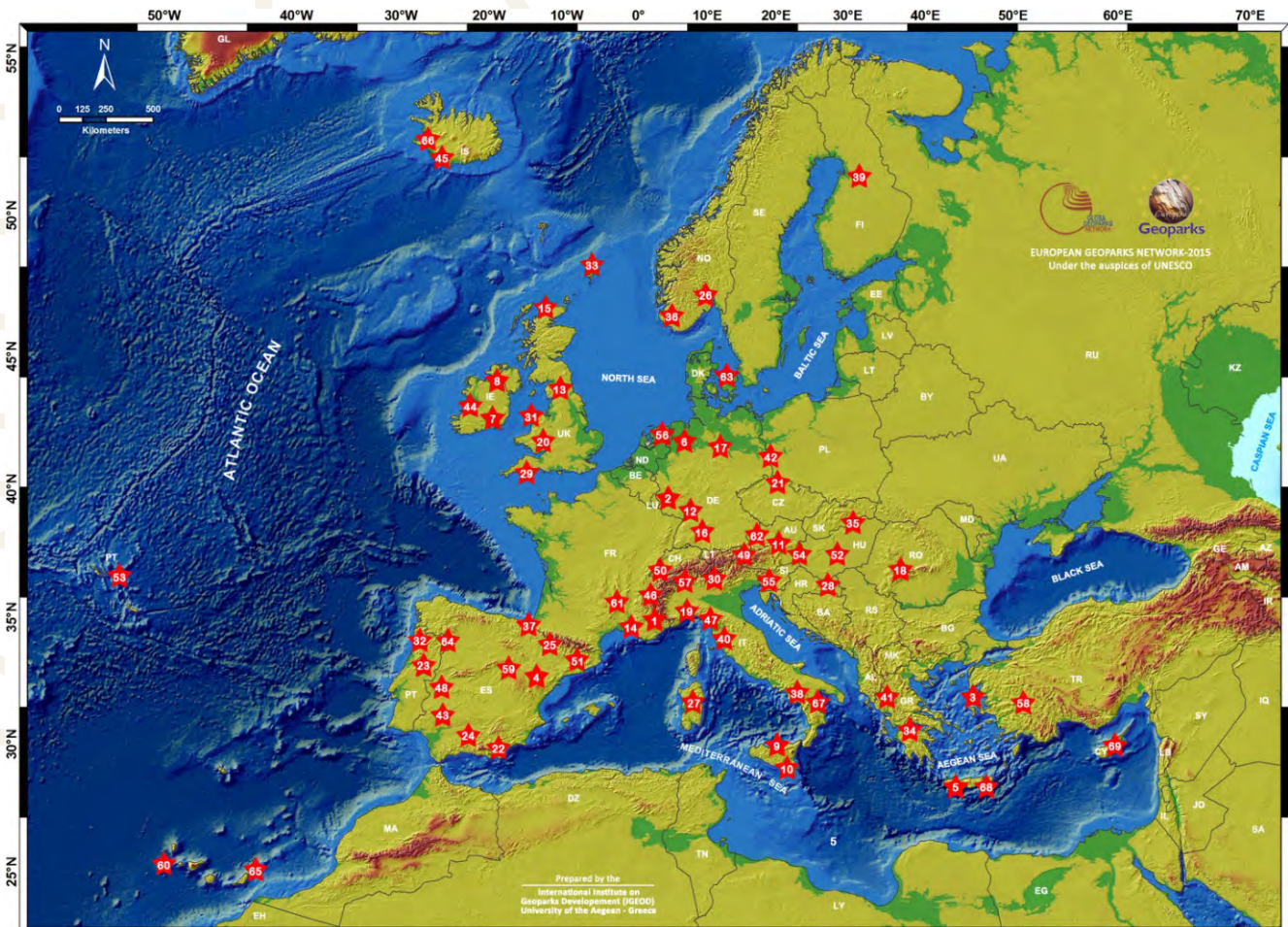
Intrusive rocks

- Basic rocks, aplites and pegmatites
- Quartz

Tectonic

- Main faults

Geoparks: Geology with human face





Edition - Geopark Naturtejo, 2018
Coordination - Carlos Neto de Carvalho
Texts - Carlos Neto de Carvalho, Joana Rodrigues,
Município de Proença-a-Nova
Photos - Joana Rodrigues, Carlos Neto de Carvalho,
Living Science Forest Centre ,
Stud Farm Manuel Teixeira
Clipping - Alice Marcelo e Carla Jacinto
Design - Layer [Design and Print Studio]
Translation - Carla Jacinto
Editing - Joana Rodrigues



CRUZIANA

GEOPARK NATURTEJO DA MESETA MERIDIONAL EUROPEAN AND GLOBAL GEOPARK MONTHLY REPORT

www.geoparknaturtejo.com