



In this issue:

Visits by the geomining heritage of Naturtejo Geopark
Products from the geopark in the biggest sustainable production fair in Germany
Meeting of the Advisory Committee of the Global Geoparks Network
...and more!

CRUZIANA

NATURTEJO UNESCO GLOBAL GEOPARK - E-MAGAZINE



MONTHLY ACTIVITIES

February 13th - Meeting of national representatives of European UNESCO Global Geoparks. An online meeting of the national representatives of the European UNESCO Global Geoparks took place aiming to follow up the reflection initiated on new forms of organization, collaboration and work in the European Geoparks Network. The discussion focused on the mission, values and actions to be defined, which will be discussed at the next network coordination meeting, which will take place in March.



February 14th to 17th - Naturtejo Geopark partners at Biofach in Nuremberg. The BioRegion of Idanha-a-Nova participated at Biofach 2023 in Nuremberg, Germany, the most important fair of organic food and sustainable production in the world. Several partners from Naturtejo Geopark attended with geoproducts and GEOfood with organic certification: Aromas do Valado, Geocakes, Herdade do Escrivão, Queijo da Fonte, Nature Fields and Gaspar & Fernandes Bakery, which brought flavours and aromas from the geopark.



February 20th - Visit to the mining complex of Monforte da Beira.

February 20th - Visit to the mining complex of Monforte da Beira. The Castelo Branco section of Quercus - National Association for the Protection of the Environment organised a visit in the scope of another volunteering action. Carlos Neto de Carvalho was invited to guide the group of volunteers to get to know the old proto-historical mining areas of Monforte da Beira. The group climbed up the Serra do Povo mountain to Castro do Castelo fortified settlement, revealing stories of mining exploration. After the shared picnic, they visited an olive oil factory and the main church in Monforte da Beira, with the support of the parish council.



February 24th and 25th - Senior University of Lisbon visiting the geopark's Geomining Heritage. The use of geological resources during the Roman period was the subject of a weekend dedicated to the Geomining Heritage of the municipalities of Nisa and Vila Velha de Ródão in Naturtejo UNESCO Global Geopark. Within the discipline of Geology coordinated by Dr. Beatriz Marques, from the Senior University of Benfca, around 55 participants walked with Carlos Neto de Carvalho and Alice Marcelo through the Conchal do Arneiro gold mine. After a typical lunch at a Monte do Arneiro restaurant, the group visited Sítio do Cobre copper mine and the Lameira dam. The following day allowed the discovery of the landscapes of the Tagus River along the Barca da Amieira Trail, culminating with traditional flavors at the partner restaurant of Herdade do Regato, in Póvoa de Rio de Moinhos.

February 26th - Visit to Monsanto. Geolife Company guided a group of 30 visitors from the North of Portugal to the Historical Village of Monsanto.

February 28th - Global Geoparks Network Advisory Board meeting. The online meeting of the Global Geoparks Network Advisory Committee took place, bringing together 44 representatives of national Geoparks networks and forums from around the world.

At this meeting, the Network's Action Plan for the 2024/2025 biennium was discussed, with strategies for joint promotion, sustainability, training, communication and networking being debated. The Network should favor new ways of functioning and collaboration, adapting to the post-COVID-19 reality.

One of the main points discussed was the role of local languages, fundamental to eliminate language barriers and for greater inclusion and involvement of communities and local agents. A significant part of the Global Geoparks Network's activities take place in English, and there is great demand to diversify. Thus, there was unanimous agreement on the need to reinforce the role of national networks in the development of promotion and training initiatives, as well as the creation of tools in local languages, enhancing the support of communities and local authorities. Joana Rodrigues participated in the meeting on behalf of the Portuguese Network of UNESCO Global Geoparks.

IMPACT OF GEOPARK IN MEDIA



Newspapers & www

Feb 2023 (National Geographic Portugal) – Naturtejo Geopark 600 Million Years of Landscapes to Discover

PROMOTION FOR THE GENERAL PUBLIC

- NETO DE CARVALHO, C. – A corrida ao volfrâmio em Portugal. National Geographic História, 9, 16-19.



PROMOTION FOR THE GENERAL PUBLIC

WWD'23 Dia Mundial da Água

Sessão de abertura: Margarida Antunes & Teresa Valente (DCT/Universidade do Minho); Mónica Sousa (APG)

14h – *Água subterrânea versus Obras Subterrâneas*
Flávio Dias, Geólogo; Empresa Ferroviária/ACA, Empreitada “Linha Circular do Metro do Porto”

14h30m – *O concelho de Amares e as suas águas especiais – exemplo das Termas de Caldelas e centros de educação ambiental*
Marina Mendes, Lic. Biologia-Geologia; Câmara Municipal de Amares

15h – *Águas subterrâneas: Património Geológico invisível?*
Joana Rodrigues, Geóloga; Geopark Naturtejo

15h30m – *Pesquisa e captação de água subterrânea*
Rita Martins, Geóloga; Empresa Furos Simplicio, Lda

16h – *Geofísica aplicada*
Bruno Sameiro Pereira, Geólogo; Sinergeo

Encerramento das atividades

22/03/2023, 14h – Anfiteatro de Quimica (Ed. 6), Campus de Gualtar, Universidade do Minho (Braga)

2023 Ano da Água



Turismo Acessível nos Geoparques
Ação de Capacitação

Tema: Alojamento Turístico e Restauração

Destinatários: Empresas de Alojamento Turística e de Restauração e Bebidas

Data: Dia 23 de março de 2023 | 15h - 17h30 | Via TEAMS

Conteúdo formativo:

- **Conceitos:** Turismo Acessível, Design Universal, Tipologias de limitação
- **Contexto:** normativo internacional/europeu/nacional
- **Tendências:** da procura e oportunidades de negócio
- **Programa ALL FOR ALL**
- **Ferramentas técnicas:**
 - Guia prático – Acessibilidade no alojamento turístico
- **Boas práticas:**
 - Hotel Vila Batalha, Batalha
 - Moinho do Maneio, Penamacor
 - Restaurante Mosteiro do Leitão, Batalha*

* a confirmar

TURISMO DE PORTUGAL

Campanha de Verão 2023
28 de junho a 6 de agosto

2023
Proença-a-Nova International Archaeological Field Camp
Campo Arqueológico de Proença-a-Nova
Portugal

- Escavações e Prospecção Arqueológicas
Campo 1: 25 de junho a 9 de julho
Campo 2: 9 a 23 de julho
Campo 3: 23 de julho a 6 de agosto
- Curso de Introdução à Avaliação de Impacte Ambiental (AIA) aplicada à Arqueologia (calendário a definir)
- Conferências sobre AIA
29 de junho, 13 e 28 de julho
- Visitas de estudo
- Jantares de convívio

Contactos para informações:
atac@igal.com
www.archaeologicalfieldcamps.portugal.pt

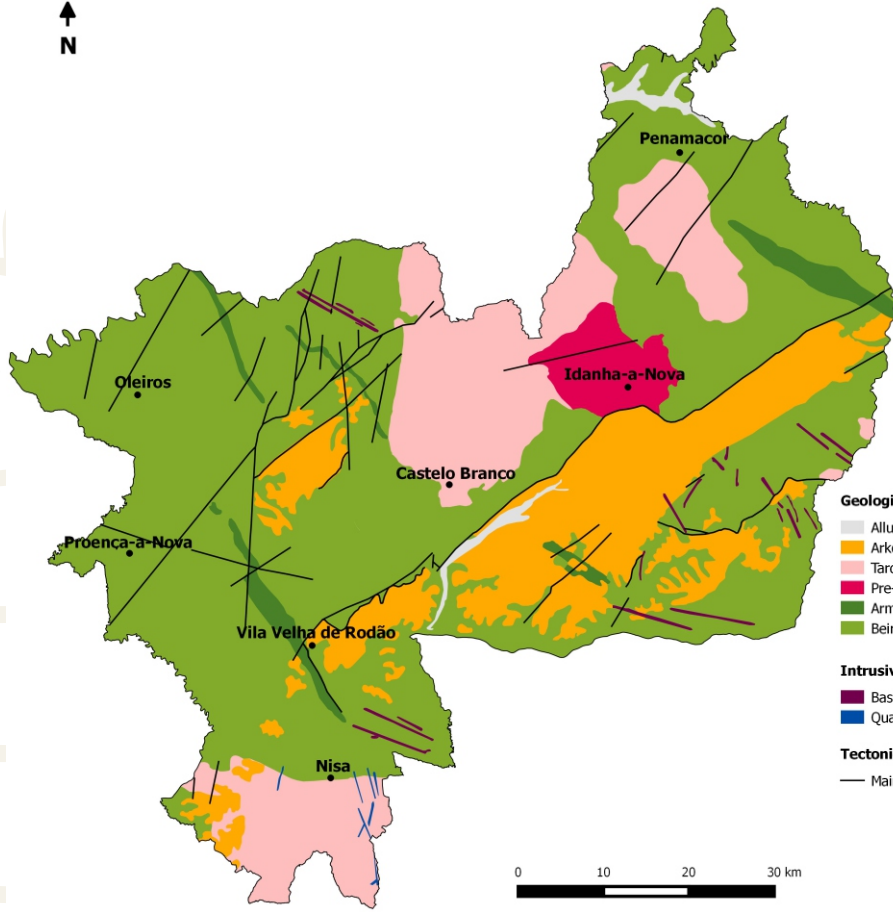
PROMOTION FOR THE GENERAL PUBLIC



Mercado Bio-Região
IDANHA-A-NOVA
SÁBADOS
DAS 08H00 ÀS 12H00
MERCADO MUNICIPAL
(PRAÇA)

Visite o Geopark Naturtejo em:

-  www.geoparknaturtejo.com
-  www.facebook.com/geoparknaturtejo.mesetameridional
-  www.instagram.com/geopark_naturtejo/
-  www.youtube.com/geoparknaturtejo
-  issuu.com/geoparknaturtejo
-  https://twitter.com/Geo_Naturtejo
-  <https://www.linkedin.com/company/geoparknaturtejo/>



Geological Formations (Ma-Million years)

- Alluvium and fluvial terraces - Plistocene-Holocene (1Ma-present)
- Arkoses, breccias and conglomerates - Eocene-Pliocene (50-2.6Ma)
- Tardi-Variscan orogenic granites (315-300Ma)
- Pre-Variscan granodiorites (480-472Ma)
- Armorican Quartzite and schists - Ordovician-Lower Silurian (488-435Ma)
- Beiras Group (schists and greywackes) - Neoproterozoic (610-542Ma)

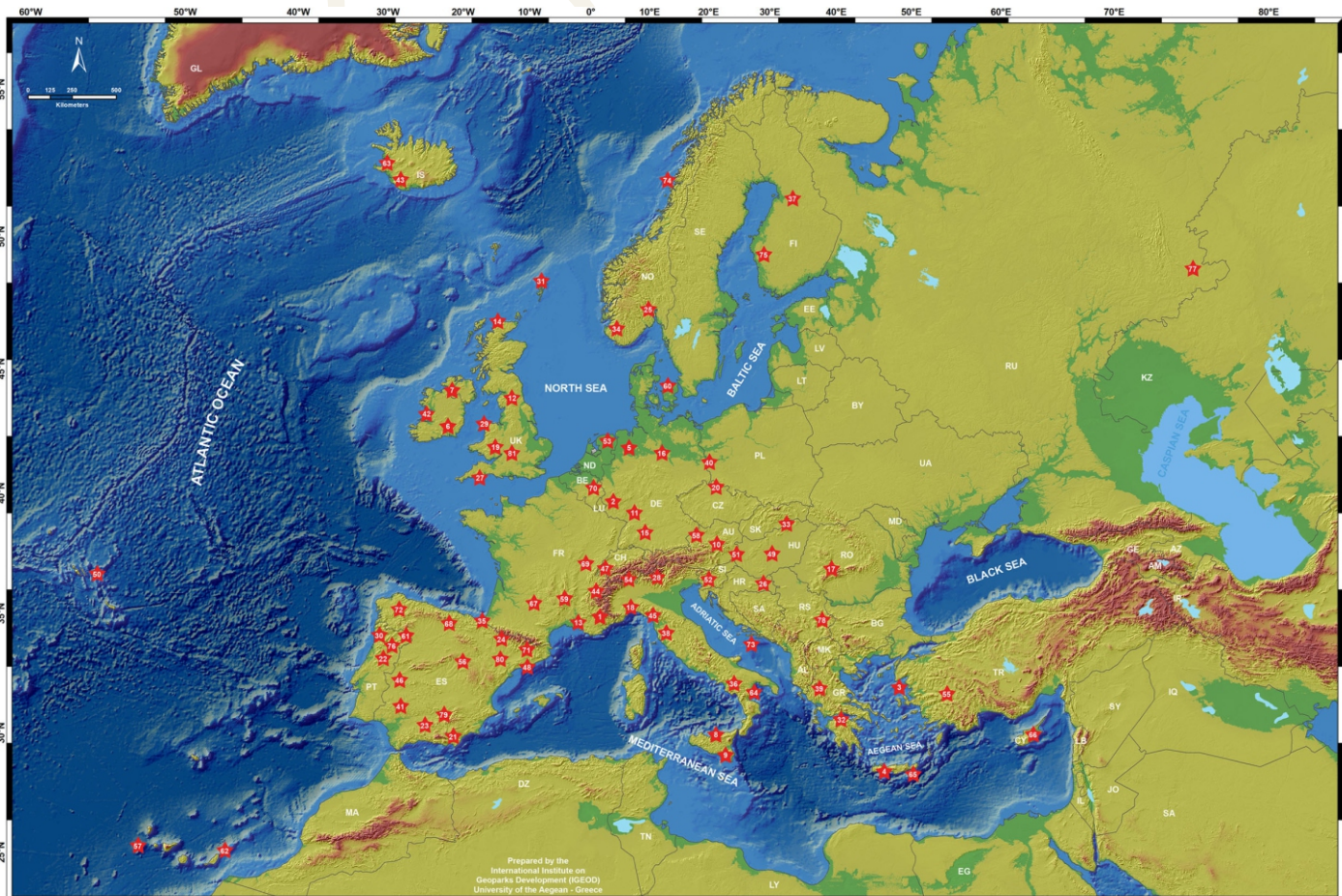
Intrusive rocks

- Basic rocks, aplites and pegmatites
- Quartz

Tectonic

- Main faults

Geoparks: Geology with human face





Edition - **Geopark Naturtejo, 2023**
Coordination - **Carlos Neto de Carvalho**
Texts - **Carlos Neto de Carvalho, Joana Rodrigues, Manuela Catana, Carla Jacinto**
Photos - **Carlos Neto de Carvalho, Joana Rodrigues, Mário Ramos**
Clipping - **Carla Jacinto e Alice Marcelo**
Design - **Layer [Design and Print Studio]**
Translation - **Carla Jacinto**
Production - **Joana Rodrigues**



CRUZIANA

GEOPARK NATURTEJO DA MESETA MERIDIONAL EUROPEAN AND GLOBAL GEOPARK MONTHLY REPORT

www.geoparknaturtejo.com