



In this issue:

Idanha's Bio-Region Market continues to promote Geoproducts
European workshop on Water as a Geological Heritage
IGCP Project 736 - "SEDSNet - Science and Education Networks for Sustainable
Development in UNESCO Global Geoparks"
...and more!

CRUZIANA

NATURTEJO UNESCO GLOBAL GEOPARK - E-Magazine



MONTHLY ACTIVITIES



February 5th - Presentation of the video "Odemira Landscapes in 375 million years". The short documentary "Odemira Landscapes in 375 million years" was presented at theatre Camacho Costa in Odemira. Result of the scientific partnership between Naturtejo Geopark and the municipality of Odemira, county of Alentejo, this video produced by Carlos Neto de Carvalho and directed by Jesus Salazar Cabrera is a journey in space through Time, showing sites of geological relevance and forms of harmonious interaction between Man and Landscape. Still in pandemic period, the room was very crowded to receive Carlos Neto de Carvalho and the Mayor of Odemira. After the presentation of the video there was a conversation between the authors, with Jesus Salazar in videoconference from Madrid, the Mayor of Odemira and the audience present about ways of valuing the local geological heritage, the movement of geoparks in Portugal and the action of the municipality in education for geoconservation and protection of its geological heritage. The video, with English subtitles, can be viewed on the webpage of the municipality of Odemira.



February 10th - Participation in the II Webinar about the Palaeontological Site of Cabeço da Ladeira. The Alviela Living Science Center, with the support of the Institute for Nature and Forest Conservation, held another webinar dedicated to present to the community of the Alcanena School Group the relevant paleontological heritage of the Cabeço da Ladeira. The "Jurassic Beach" of S. Bento, located in Serra dos Candeeiros in Porto de Mós, holds an important paleontological record of the Middle Jurassic. Carlos Neto de Carvalho, through the existing cooperation between Naturtejo UNESCO Global Geopark and the National Laboratory for Energy and Geology, has been studying this paleontological site. For this webinar he was one of the guests and promoted the presentation with the title "Signs of Life in the Jurassic Beach of S. Bento". Moderated by Lia Mergulhão, from ICNF, the students had the opportunity to question the researchers and thus learn more about the work that has been done for the study and conservation of the Paleontological Site of Cabeço da Ladeira.



February 12th and 24th - Idanha's Bio-Region Market continues to promote Geoproducts. The Bio-Região Market, promoted by Idanha-a-Nova Municipality, with the collaboration of Naturtejo Geopark, will be held every two weeks, on the second Saturday and fourth Thursday of each month. This initiative aims to value the organic and sustainable agriculture, as well as to support local producers and is integrated in the Bio-Region food policy. Naturtejo Geopark, besides integrating the market dynamization team, has a territory promotion space dedicated to Geoproducts and GEOfood. In February were also present with their own space the partners Geocakes (Idanha-a-Nova) and Vale de Alfaia (Sobral do Campo). The mission of the GEOfood brand is to support the development of local communities, increasing initiatives to achieve the Sustainable Development Goals. The two-weekly market comes to strengthen the local economy and food km zero, raising awareness of the importance of consuming local and seasonal products, contributing to better management of water resources and soil preservation.

February 17th - Participation in the European Workshop "Water as a Geological Heritage. The workshop on the importance of the hydrogeological resources and associated activities in the UNESCO Global Geoparks Network was an initiative of the Karawanken-Karavanke Geopark with the University of Applied Sciences of Carinthia, responsible for the UNESCO Chair for Sustainable Management of Protected Areas, in Austria. The theme had a great adhesion from the geoparks, with 30 representatives, with Naturtejo Geopark represented by Carlos Neto de Carvalho. The goal of the workshop in World Café format was to discuss the responsibilities and challenges of UNESCO Global Geoparks in relation to the valuation and protection of the hydro geological resources and to create a starting point for a closer collaboration within the Global Geoparks Network in relation to water related topics. The discussion took place in smaller groups around the topics: climate change and water, education for sustainable water management, tourism valuation and impacts, planning and participation in hydro geological resources management and ways of collaboration between geoparks on the topic at hand.



February 23rd - French TV channel in Monsanto Inselberg. The team of correspondent journalists for the Iberian Peninsula of the French channel TF1 was in reportage at Naturtejo Geopark to know the Historical Village and Monsanto Boulders, accompanied by the geologist Joana Rodrigues.

February 24th - IGCP Project 736 - "SEDSNet - Science and Education Networks for Sustainable Development in UNESCO Global Geoparks". Naturtejo Geopark integrated Project IGCP 736 - "SEDSNet - Science and Education Networks for Sustainable Development in UNESCO Global Geoparks", financed by the International Geosciences and Geoparks Programme of UNESCO.

This project coordinated by the Geoparks Estrela (Portugal), Araripe (Brazil) and Mixteca-Alta (Mexico) aims to establish a network of cooperation and sharing of experiences to promote scientific research applied to Geoparks and contributes to a greater involvement of the communities of these territories, through formal and non-formal education.

The project includes the UNESCO Global Geoparks of Portugal, Mexico and Brazil, as well as aspiring territories of these countries. The structure of this network is based on thematic Working Groups, adapted to the context of their territories.

On February 24th took place the first work meeting of the project, to discuss the priority themes to be developed and the objectives for the year 2022, with Joana Rodrigues representing Naturtejo Geopark.



February 26th - Tourist programme at Naturtejo Geopark. A group from Guimarães Travel Agency was guided by the local guide company Geolife Tours. They visited and discovered the secrets of Idanha-a-Velha, in its ancient Roman and Visigothic city, and Penha Garcia with its Ichnological Park.

IMPACT OF GEOPARK IN MEDIA



TV & Radio

February 8th (Rádio Onde Livre FM) - Portuguese UNESCO Geoparks launch research catalogue

February 10th (Rádio Cova da Beira) – Geoparks launch research catalogue

February 12th (Beira BaixaTV) - Special live broadcast dedicated to the market and local producers.

21 de Fevereiro (SIC Notícias) - Organic products from Portuguese Geoparks available on national e-platform

Newspapers & www

February (Maisbeiras) – Geological studies in action at Naturtejo Geopark

February (O Concelho de Vila Velha de Ródão) – PR3 - Foz do Cobre Schist trail available again on Geonatour App

February 2nd (Diário Digital Castelo Branco) – Idanha-a-Nova Municipality and Zero welcome the exclusion of Segura from lithium mining

February 2nd (Reconquista) - Lithium: Segura area stays out of mining exploration

February 4th (Gazeta Rural) - UNESCO Geoparks in Portugal create support catalogue for researchers

February 4th (Comunidadeslusofonas.pt) - Research Catalogue developed by the Portuguese UNESCO Global Geoparks Network

February 4th (Descla) – Green, Gray and Blue - Geoparks

February 10th (Reconquista) - Geopark and Biosphere stop exploration in Segura

February 10th (Reconquista) - Geoparks launch research catalogue

February 15th (Expresso_Boa Cama Boa Mesa) – Orvalho Footbridges_ from Cabeço do Mosqueiro to Fraga de Água d'Alta waterfall

February 21st (CentroTV) - Destinature points out investment to enhance birdwatching in Central Portugal

February 24th (Reconquista) - Exclusion of Segura was no surprise for Quercus

SCIENTIFIC CONTRIBUTIONS FOR THE GEOPARK AND THE GEOSCIENCES



- CATANA M.M. & BRILHA J. - Environmental Education in Naturtejo UNESCO Global Geopark (Portugal): A Nature-Based Approach. In: Vasconcelos C., Calheiros C.S.C. (eds) Enhancing Environmental Education Through Nature-Based Solutions. Integrated Science, vol 4. Springer, Cham. https://doi.org/10.1007/978-3-030-91843-9_17

- NETO DE CARVALHO, C. & BELO, J. – Bear-claw deep tracks in the Pleistocene at north of Praia do Cavalo, Odemira (Portugal). Ciências da Terra/Earth Sciences Journal, 20(1): 21-25.

- YAKOVENKO, A., GUEDES, A., BOIRON, M.C., CATHELINÉAU, M., MARTINS, I. & MATEUS, A. - Fluid inclusion studies in quartz from the Li-rich pegmatite veins from Segura. Livro de Resumos. Jornadas do ICT 2022. 10 e 11 de Fevereiro , Universidade de Évora, p. 43.

PROMOTION FOR THE GENERAL PUBLIC

BOLSA TURISMO LISBOA TRAVEL MARKET
16 / 20 MARÇO 2022
FIL · LISBOA · PORTUGAL

unesco
Global Geopark

I CAP - CURSO DE ATUALIZAÇÃO DE PROFESSORES EM GEOCIÊNCIAS - ESPECIAL

PAISAGENS EDUCATIVAS DO GEOPARK NATURTEJO MUNDIAL DA UNESCO

Sessões EaD: 30 abril 2022 (AFCD)
Curso de campo: 6 a 8 maio 2022
Duração: 30 horas
MAIS INFO [+]: icapespecial.wordpress.com | info@apegeologos.pt

APG ASSOCIAÇÃO PORTUGUESA DE GEÓLOGOS

naturtejo GEOPARK unesco Global Geopark

Mercado Bio-Região
IDANHA-A-NOVA

12 E 24 DE MARÇO DE 2022
DAS 9H00 ÀS 13H00

MERCADO MUNICIPAL
(PRAÇA)



PROMOTION FOR THE GENERAL PUBLIC



Homem morto passou aqui

Fotografia de **Valter Vinagre**

12 DE MARÇO A 13 DE ABRIL DE 2022

Centro Cultural Raiano
de terça a domingo
das 9h às 13h e das 14 às 17h



XII Encontro Internacional de Fitosociologia

A Ciência da Vegetação aplicada à gestão, conservação e restauro ecológico de habitats

Primeira Circular

Escola Superior Agrária de Castelo Branco, Portugal
6, 7 e 8 de setembro de 2022



Summer Campaign

July 4 - 30, 2022

Archaeological Excavations
Camp 1: Cannon battery of Baterias I
July 4-16, 2022
Camp 2: Megalithic tomb
July 11-23, 2022
Camp 3: Old Chapel of Peral
July 18-30, 2022

Exhibition "10 years of the Proença-a-Nova Archaeological Field Camp
July 8, 2022 (opening)

Lectures
July 9, 16 and 23, 2022

Field trip
July 17, 2022

Dinner at schist village
July 14 and 20, 2022

Contacts for further information:
+351 914 466 382 / 272 545 074 (AEAT)
altotejo@gmail.com
archaeologicalfieldcamps-portugal.pt

2022

Proença-a-Nova International Archaeological Field Camp

Campo Arqueológico de Proença-a-Nova

Portugal

PROMOTION FOR THE GENERAL PUBLIC



GLOBAL GEOPARKS NETWORK

unesco Global Geoparks

UNESCO GLOBAL GEOPARKS

YOUTH FORUM MEETING

23 March 2022

globalgeoparksnetwork.org



ODEMIRA

PAISAGENS EM 375 MILHÕES DE ANOS

DOCUMENTÁRIO DE JESUS SALAZAR & CARLOS NETO DE CARVALHO

5 fev, 15h00
CINTEATRO CAMACHO COSTA ODEMIRA

Entrada gratuita, com marcação prévia

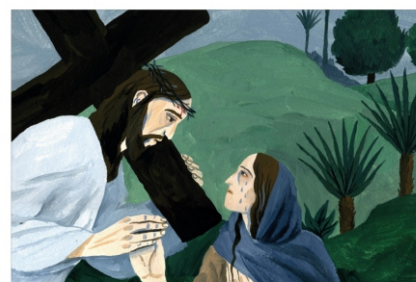
Odemira MUNICÍPIO



SEMANA DOS PARCEIROS 2022

04 a 10 de Abril

Atividades únicas em minas e locais de interesse geológico



Os Passos da Via Sacra

Ilustração de Susa Monteiro

12 DE MARÇO A 24 DE ABRIL DE 2022

Centro Cultural Raiano
de terça a domingo
das 9h às 13h e das 14h às 17h*

* Exceto no Domingo de Paixão

Centro Cultural Raiano

CCR - XXV
1997 - 2022

CENTRO CULTURAL RAIANO
Tel: 81201 077 200 900
Url: www.idenha.pt
Ribeirão, CC Raiano



PROMOTION FOR THE GENERAL PUBLIC



As minas no tempo dos Romanos: o Ouro e o Cobre na região das Portas de Ródão 9 e 10 de Abril 2022

Visita Mina de Ouro Romana do Conchal do Arneiro | Sítio do Cobre
Ponto de Encontro Centro Interpretativo do Conchal, Monte do Arneiro dia 9 | 16 horas
Alojamento recomendado Monte do Pego – Casa de Campo (Conchal do Arneiro)
www.montedopego.com
Inscrição gratuita mas obrigatória
geral@naturtejo.com



Visit Naturtejo Geopark in:



www.geoparknaturtejo.com



www.facebook.com/geoparknaturtejo.mesetameridional



www.instagram.com/geopark_naturtejo/



www.youtube.com/geoparknaturtejo



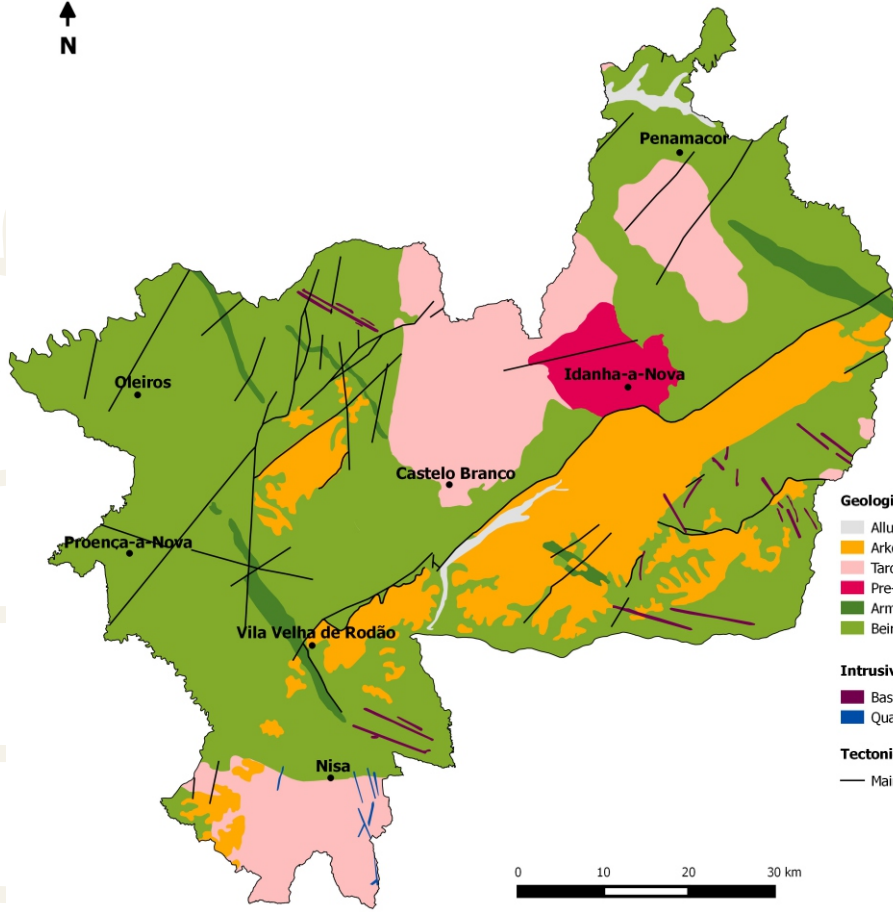
issuu.com/geoparknaturtejo



https://twitter.com/Geo_Naturtejo



<https://www.linkedin.com/company/geoparknaturtejo/>



Geological Formations (Ma-Million years)

- Alluvium and fluvial terraces - Plistocene-Holocene (1Ma-present)
- Arkoses, breccias and conglomerates - Eocene-Pliocene (50-2.6Ma)
- Tardi-Variscan orogenic granites (315-300Ma)
- Pre-Variscan granodiorites (480-472Ma)
- Armorican Quartzite and schists - Ordovician-Lower Silurian (488-435Ma)
- Beiras Group (schists and greywackes) - Neoproterozoic (610-542Ma)

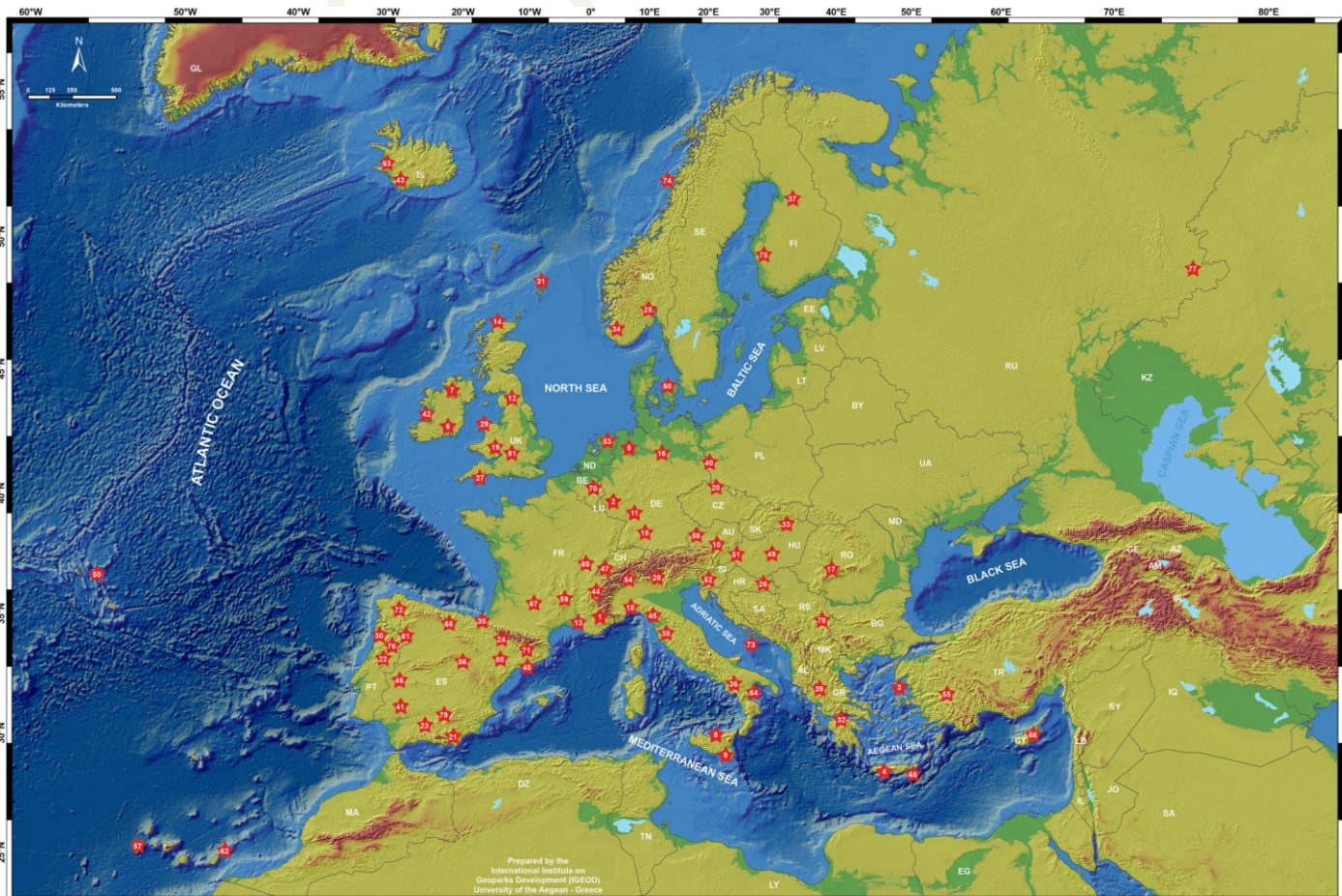
Intrusive rocks

- Basic rocks, aplites and pegmatites
- Quartz

Tectonic

- Main faults

Geoparks: Geology with human face





Edition - Naturtejo Geopark, 2022
Coordination - Carlos Neto de Carvalho
Texts - Carlos Neto de Carvalho,
Joana Rodrigues, Manuela Catana
Photos - Carlos Neto de Carvalho,
Joana Rodrigues, Manuela
Catana, Susana Santos
Clipping - Carla Jacinto e Alice Marcelo
Design - Layer [Design and Print Studio]
Translation - Carla Jacinto
Editing - Joana Rodrigues



CRUZIANA

GEOPARK NATURTEJO DA MESETA MERIDIONAL EUROPEAN AND GLOBAL GEOPARK MONTHLY REPORT

www.geoparknaturtejo.com

