



In this issue:

New series of "Game of Thrones" shot at Monsanto geomonument
Dating of landscapes associates Naturtejo UNESCO Global Geopark to international research team
Seminar "Food Policy in the Bio-Region of Idanha-a-Nova"
...and more!

CRUZIANA

NATURTEJO UNESCO GLOBAL GEOPARK - E-Magazine



MONTHLY ACTIVITIES



October – New Geoproduct. Ervas da Zoé is the most recent Geoproduct of Naturtejo Geopark and partner of the international brand GEOfood! The company, installed in Quinta das Mentas farm, in the countryside of Idanha, since 2007, was pioneer in the region, producing with organic certification.

Ervas da Zoé produces aromatic and medicinal condiment herbs, with a spirit of personal mission and aiming to improve the planet and humanity. Under a refined cultivation and sustainable production process, over 40 plants are selected, dried and cared for until they are packaged. Native plants such as *Thymus mastichina* and *Mentha pulegium* are some of the secret ingredients of the tea and spice blends!

October 2nd - Participation in the Conference of the Spanish Palaeontological Society. Carlos Neto de Carvalho attended the XXXVI SEP Conference, this year held virtually from Huesca, Northern Spain. The communication of Carlos Neto de Carvalho was entitled "The Matalascañas Trampled Surface: A unique tracksite from the MIS 5 (early Late Pleistocene) of SW Spain" and aimed to show the work done in the last two years by the international team in which he is collaborating and that has been studying the paleobiological remains in the fossil dunes of SW Portugal and Spain.

October 2nd and 3rd - Arrebita Idanha Bio: the festival of local gastronomy. The historical villages of Penha Garcia and Idanha-a-Velha host a new edition of Arrebita Idanha Bio, a local gastronomy festival that once again focuses on sustainability and biodiversity. Arrebita Idanha Bio aims to establish itself as a cult event in the country after it was awarded the Grand Prize of the Portuguese Academy of Gastronomy in 2020. In two days of communion with nature and with the oldest traditions and cultures of the region, over 30 top chefs masterfully cook the best local organic products. On the first day, a regional producers' market was held to contribute to the local economy.



October 2nd to 4th – Tour by Naturtejo Geopark. The visit of a group of friends took them through Idanha-a-Nova, Penha Garcia, Monsanto and Idanha-a-Velha, accompanied by the guides Andreia from Porta Raiana and Susana from Geolife companies, respectively. In the Chapel of Senhora do Almortão they were received with the sound of the adufe.

October 3rd - Director of Santa Catarina State University in Brazil visits the Geopark. Professor Izabel Regina de Souza made a study visit to Naturtejo Geopark. Director of the UNESCO in southern Brazil, she was received by the Scientific Coordinator of Naturtejo Geopark, Carlos Neto de Carvalho, in the Barrocal Park, where they had the opportunity to discuss the impact of geoparks in local economies.



October 13th - Strategic Roadmap for Tourism Development in the International Tejo Nature Park. The Polytechnic Institute of Castelo Branco promoted a Participatory Session under the project "Creation of the Strategic Roadmap for Tourism Development in the International Tejo Nature Park - ITNP", at the Nature Activities Support Centre in the village of Malpica do Tejo. This project is part of the Enhancement Plan 2018-2022, prepared under the Pilot Project for Collaborative Management of the ITNP.

The aim of the session was to discuss, together with local stakeholders, the strategic axes of action and anchor/structuring interventions in the ITNP, as well as objectives and targets to be achieved for tourism regarding each of the thematic areas under discussion: operators and support services to tourism activity; resources (natural, heritage and hunting) and governance. Joana Rodrigues represented Naturtejo Geopark integrating the thematic table of resources and governance.



October 13th, 14th and 28th – New Educational Program at Barrocal Park. The Barrocal Park is the most recent school of environmental education in the city of Castelo Branco and the proof of this is the new educational program. Offered by the Municipality of Castelo Branco to the High School classes of the city, the new Educational Programme is being implemented by Carlos Neto de Carvalho. In October, three training actions of 4 hours took place for classes of the 10th and 11th years from Nuno Álvares High School. The discovery of geodiversity on a journey of 310 million years adapts the Barrocal Park to the curricular programme as an example of concepts and processes.



October 14th and 15th – 12th Annual Partners Meeting of the " Guide of the Portuguese Geological and Mines Sites". Batalha hosted the 12th Annual Partners Meeting of the " Guide of the Portuguese Geological and Mines Sites". This year's edition, back to the face-to-face format, was organised by the Moeda Caves, in partnership with the Directorate-General for Energy and Geology and the Mining Development Company. The works took place at the Batalha Monastery WHS, where a balance of the network work and the articulation of future initiatives were made, as well as the presentation of the Portuguese Quality Standard in Industrial Tourism Services and of the Decree-Law 30/2021, of May 7th (called the new mining law). The agenda also included a thematic session dedicated to Inclusion and Immersion - 'The visit as an experience'. The Partners had the opportunity to visit the cloisters of Batalha Monastery, the Gothic gargoyle sculpture workshop, the Alvados Fornea geosite, at Serra d'Aire and Candeeiros Nature Park, the Moeda Caves and the Scientific and Environmental Interpretation Centre. Naturtejo Geopark was represented by Mariana Vilas Boas and Joana Rodrigues.



October 16th - Seminar "Food Policy in the Bio-Region of Idanha-a-Nova. To celebrate Food Day, the municipality of Idanha-a-Nova promoted the Seminar "Food Policy in the Bio-Region of Idanha-a-Nova" at the Management School of Idanha-a-Nova, aiming to discuss and contribute to the construction of the food policy of the Bio-Region.

The initiative brought together experts and local agents, including farmers and other food producers, agricultural, food processing and distribution companies, consumer organisations, cultural associations, private charities, technicians from the municipality and decentralised public bodies. Joana Rodrigues represented Naturtejo Geopark, and participated in the working groups where the challenges and opportunities from the environmental, social and economic point of view and the priorities, actions and commitments towards a food policy, at the level of the public power and public institutions, private sector and family-run farming were discussed.

The construction of the food policy is integrated into the territory's development strategy, focusing on sustainable production modes, and consumption of local products, short marketing circuits and circular economy.



October 16th and 17th - Interpreted visits in Barrocal Park. Another weekend with visits through 310 million years in the Barrocal Park. The guide was once again Carlos Neto de Carvalho in these two-hour visit.



October 19th - New Technical-Scientific Council of Serras d'Aire and Candeeiros Nature Park. The Serras d'Aire and Candeeiros Nature Park, located in the central western region of the country, created a Technical-Scientific Council with scientists who have worked in the protected area, and aiming to provide scientific support to the executive. Carlos Neto de Carvalho, scientific coordinator of Naturtejo Geopark, has worked in recent years in the team that is studying the Paleontological Site of the "Jurassic Beach" of S. Bento. He was invited to integrate the new Technical-Scientific Council which is headed by the geographer Lúcio Cunha, Professor from the University of Coimbra.

October 26th to November 3rd - Filming of the "Game of Thrones" saga set in the granite landscape of Monsanto Inselberg. Streaming giant HBO has chosen the Cyclopean granite backdrops, granite houses and medieval castle of the historic village of Monsanto as the setting for the filming in Portugal of the prequel to the series "Game of Thrones". The work before the filming days of "House of the Dragon" led to cut accesses, transport material in tractors and helicopter and confidentiality agreements, the locals cling to tourism in a village that exchanged the calm for the hustle and bustle. Monsanto has gone from being quiet to welcoming a crew of almost 200 people for the shooting of "House of the Dragon". In total, 500 locals were selected to participate in the shooting of this super-production that promises to put Monsanto on the map of "Game of Thrones" fans. It should be noted that the last episode of this series was seen by 19 million viewers in the United States alone, and the series was awarded with 47 Emmys.



October 28th - Spanish Television TVE2 between Penha Garcia Ichological Park and Monsanto Inselberg

October 28th – Spanish Television TVE2 between Penha Garcia Ichnological Park and Monsanto Inselberg. A team from the Spanish public channel TVE2 (La 2) was in Penha Garcia and Monsanto to know the Fossils Trail and the Grand Trail of the Historical Villages. The weekly program 'Senderos del Mundo' explores, on foot and by bike, walking and mountain bike trails around the world. Joana Rodrigues accompanied this team.



Diferenciar programas turísticos através da adoção de práticas de sustentabilidade ambiental e social, e de segurança sanitária.

Incrementar a oferta sustentável e segura por parte das empresas parceiras dos Geoparques UNESCO Portugal.

Posicionar Portugal como destino sustentável e seguro, através de atividades na natureza, nomeadamente nos Geoparques, respondendo assim aos desafios da ET 2027, dos Objetivos de Desenvolvimento Sustentável (ODS) e da retomada pós COVID19.

OBJETIVOS

Programas 100% Responsible



28 de Outubro – Programas 100% Responsible by Geoparques. Tourism of Portugal and the Portuguese UNESCO Global Geoparks promoted a clarification session about '100% Responsible Packs by Geoparks' addressed to the partner companies of the several Geoparks, including partners of Naturtejo Geopark. The 100% Responsible Packs were initially promoted by Tourism of Portugal, to the outdoor partner companies of Portuguese Trails, aiming to stimulate them to develop and promote their packs as a sustainable and safe offer, thus responding to a growing demand from international markets. The '100% Responsible Packs by Geoparks' recently launched and integrated in the Plan +Sustainable Tourism 20-23, are intended to partner companies that develop tourism packs in these territories, according to criteria of economic, environmental and social sustainability. In this action João Portugal, from Tourism of Portugal, together with representatives of the Portuguese UNESCO Global Geoparks, presented the initiative and clarified several doubts about the implementation of the packs. Joana Rodrigues, from Naturtejo Geopark, deepened the adhesion procedure and the specific criteria for the packs in Geoparks territories.



October 30th – The oldest tree in Naturtejo Geopark is 1620 years old

October 30th - The oldest tree in Naturtejo Geopark is 1620 years old. The partner company Real Idanha, responsible for the production of Egitânia Olive Oil, Geoproduct and GEOfood of Naturtejo Geopark, is developing a tour itinerary to the Historical Village of Idanha-a-Velha, through a circuit dedicated to 'Trees with History'.

The project includes not only the regeneration of the 180 ha traditional olive grove where olive oil is produced, but also the dating and valorisation of monumental olive trees in the village. Some of the most emblematic trees have been dated between 350 and 1620 years old. The oldest tree was planted around 401, and its trunk is now 8 m in diameter.

The Route was presented as part of the 12 Networked Events Cycle - Villages in Party, of the Historical Villages of Portugal, guided by Tiago Lourenço from Real Idanha company, supported by Patrícia Dias, archaeologist of the Municipality of Idanha-a-Nova.

Besides the centenary and millenary olive trees, the tour includes other monumental trees such as the King Wamba's Ash tree, the large Holm oak and the Mulberry tree from the square and allows to tell the story of the village based on its trees. The circuit will also integrate a 'Planting the Future' space, where new trees will be planted and in the future will tell the story of the present times and the present project. Soon, 'Trees with History' will integrate the tourist offer of Naturtejo Geopark.



October 30th to November 3rd - Age of landscapes associates Naturtejo UNESCO Global Geopark to international research team.

How many thousands or millions of years did it take to form the landscape we love the most? This is a question with an answer for Tibor Dunai and his team from the Institute of Geology and Mineralogy at the University of Cologne in Germany. Dr Dunai and part of his international team were at Naturtejo UNESCO Global Geopark searching for new data that will lead to insights into how the landscape evolved and the Tejo valley was formed. "This is a golden opportunity for us to get more answers about the age of Tejo river and the processes that led to its development in the course of important climate changes that took place in the last millions of years", refers Carlos Neto de Carvalho, scientific coordinator of Naturtejo Geopark. The international team of CRONUS - Project Earth uses cosmogenic isotopes to determine how long ago a rock was exposed to the surface by erosion or a soil was formed, allowing to know erosion rates with several applications, such as in studies of erosion processes, tectonic activity or soil formation. The interaction between the cosmic rays which are constantly reaching us from the most remote parts of the galaxy, with rocks and soils exposed to the Earth's surface, produces stable, radioactive isotopes. Their abundance makes it possible to determine important chronological information from the last thousands to tens of millions of years of Earth's history.

The German research team was attracted by the very ancient landscapes surrounding the Tejo river valley described in recently published works by Naturtejo Geopark team, as well as by the studies developed by the researchers Pedro Proença e Cunha and António Martins about the landscape evolution in the region, Portuguese specialists that also integrate this partnership with the geopark. With the field support of Naturtejo, EIM, the team obtained more than 180 kg of rock samples collected between the granites of Alpalhão and the important geomonument of Portas de Almourão, near the villages of Foz do Cobre and Sobral Fernando. The fieldwork was supported by local people who opened the doors of their properties, as well as by the company Manuel Pedro de Sousa & Filhos, who allowed the team to carry out a complete sampling profile at the quarry front, which they have recently restarted exploring in Alpalhão. even Binnie, na Universidade de Colónia, e os primeiros resultados serão conhecidos na próxima primavera.

The samples were sent to the Cosmogenic Isotope Laboratory coordinated by Steven Binnie at the University of Cologne and the first results will be known next spring. This and other scientific projects broaden the knowledge about Naturtejo UNESCO Global Geopark's territory in a perspective of valorisation of its natural heritage. It is intended once more that these projects involve the local communities and that they find relevance for economic activities with strong potential for the region, such as Nature Tourism, but also for other industries and agricultural activities in a context of climate change.



IMPACT OF GEOPARK IN MEDIA



TV & Radio

- October 12th (Rádio Cova da Beira) – New discoveries in Vale Feitoso
- October 13th (Rádio Castelo Branco) - Research project brings new paleontological discoveries to Vale Feitoso
- October 15th (Beira Baixa TV) – New paleontological discoveries in Vale Feitoso

Newspapers & www

- October (Raiano) - New discoveries in archeology
- October 10th (Central Noticias) - Research project brings new paleontological discoveries to Vale Feitoso
- October 11th (Gazeta Rural) - Research project brings new paleontological discoveries to Vale Feitoso
- October 11th (Diário Digital) – Naturtejo: Research brings new paleontological discoveries to Vale Feitoso
- October 11th (Beira News) - Research project brings new paleontological discoveries to Vale Feitoso
- October 11th (Fórum Covilhã) - Research project brings new paleontological discoveries to Vale Feitoso
- October 12th (Diário de Notícias) – Vale Feitoso. Researchers find fossils hundreds of millions of years old
- October 12th (eldiariodelatinoamerica) - Researchers make new paleontological discoveries in Naturtejo Geopark
- October 14th (Reconquista) - Research project in Vale Feitoso - Paleontology with new discoveries

SCIENTIFIC CONTRIBUTIONS FOR THE GEO PARK AND THE GEOSCIENCES



- NETO DE CARVALHO, C., MUÑIZ, F., BELAÚSTEGUI, Z., GALÁN, J.M., RODRÍGUEZ-VIDAL, J., GÓMEZ, P., TOSCANO, A., RUIZ, F., BELO, J., CACHÃO, M., PROENÇA CUNHA, P., CÁCERES, L.M., FINLAYSON, G., FINLAYSON, S., GILES GUZMÁN, F., FINLAYSON, C. - The Matalascañas Trampled Surface: a unique tracksite from the MIS 5 (early Late Pleistocene) of southwestern Spain. XXXVI Jornadas de la SEP. Lucas Mallada, 23, 203-205.

PROMOTION FOR THE GENERAL PUBLIC



unesco
Global Geopark

WEBINAR

A COMUNICAÇÃO NOS GEOPARQUES

No âmbito do 6º Aniversário do I.G.G.P.
Programa Internacional de Geociências e Geoparques da UNESCO

- > José Luís Santos - Fotógrafo de Viagem
- > Joana Rodrigues - Geóloga no Naturtejo UGGP
- > Luís Taklim - Ilustrador Científico
- > Filipa Cardoso - Diretora do departamento de Comunicação e Marketing Digital do Turismo de Portugal

moderador: Gonçalo Pereira Rosa - Diretor da National Geographic Portugal

Entrega dos Prémios do 1º Concurso de Fotografia - Geoparques Portugueses

PLATAFORMA ZOOM
17 NOVEMBRO 2021
15h30

organizado por: **GEOPARQUE CORES**, **AROLICA GEOPARK**, **ESTRELA GEOPARK**, **naturtejo**, **GEOPARK TERRAS DO SERTÃO**, **visit Portugal**

→ 06 NOV'21
MONSANTO
Histórias da Aldeia:
Entre a Noite e a Madrugada

12^{em} rede
aldeias em festa!

LIVE
LIVESTREAMING

ALDEIAS HISTÓRICAS DE PORTUGAL

*A noite caiu sem mancha e sem culpa.
De repente, transformou as realidades do bom e do mau.
Fim de mundo e início de tudo. Tudo o mais é realidade.*

CENTRO 2020

BARROCAL

PARQUE

VISITAS COM GUIA

20 e 21 de novembro
10h às 12h

Descubra mais sobre uma história com 310 milhões de anos.

Castelo Branco
CASTELO BRANCO

barrocal-parque.pt

CENTRO 2020

BARROCAL

PARQUE

WORKSHOP

FOTOGRAFIA DE NATUREZA

21 de novembro | **INSCRIÇÕES LIMITADAS**

Luz e Exposição | **Composição de Imagem** | Técnicas de Fotografia na Natureza | **Vida Selvagem & Macrofotografia.**

CASTELO BRANCO

CENTRO 2020

Luís Gomes
"Vitorioso"

Luís Gomes
"Vitorioso"

Prof.ª Mariana
"Vitoriosa"

PROMOTION FOR THE GENERAL PUBLIC



Fora do Lugar n.10
Festival Internacional
de Músicas Antigas

19.11 – 5.12.2021
Online + Presencial
foradolugar.pt

Idanha-a-Nova
UNESCO Creative
City of Music

APPLY TO AN ERASMUS MUNDUS MASTER PROGRAMME OFFERING A UNIQUE, DEDICATED TRAINING AND EXPERIENCE IN FUNDAMENTAL AND APPLIED PALAEOLOGY, INCLUDING GEOCONSERVATION AND GEOHERITAGE.

PANGEA



4 INSTITUTIONS - 3 TRACKS

- University of Lille: project coordinator (all tracks)
- Uppsala University: partner (track 1 - Palaeobiology)
- National and Kapodistrian University of Athens: partner (track 2: Applied Palaeontology and track 3: Geoconservation)
- University of Minho: partner (track 3: Geoconservation)

With the support of the Erasmus Programme of the European Union

master-pangea.eu

master-pangea@univ-lille.fr

You could get a full financial support!
Depending on your country of residence:

- Up to 1.000€ per month
- Up to 1.000€ for your installation costs
- Up to 3.000€ for your travel costs

1 Nov a 17
Dez 2021

Estufa 1
Parque Verde de Alcobça

Os Dinossauros
regressam a
ALCOBAÇA

Com o apoio de:

Organização:

Inserido no evento:

PROMOTION FOR THE GENERAL PUBLIC



**UN CLIMATE
CHANGE
CONFERENCE
UK 2021**

IN PARTNERSHIP WITH ITALY

**31 OCT - 12 NOV 2021
GLASGOW**



**UNESCO
GLOBAL GEOPARKS
CONTRIBUTE IN THE FIGHT
AGAINST CLIMATE CHANGE**

Global Geoparks Network
www.globalgeoparksnetwork.org



Visit Naturtejo Geopark in:



www.geoparknaturtejo.com



www.facebook.com/geoparknaturtejo.mesetameridional



www.instagram.com/geopark_naturtejo/



www.youtube.com/geoparknaturtejo



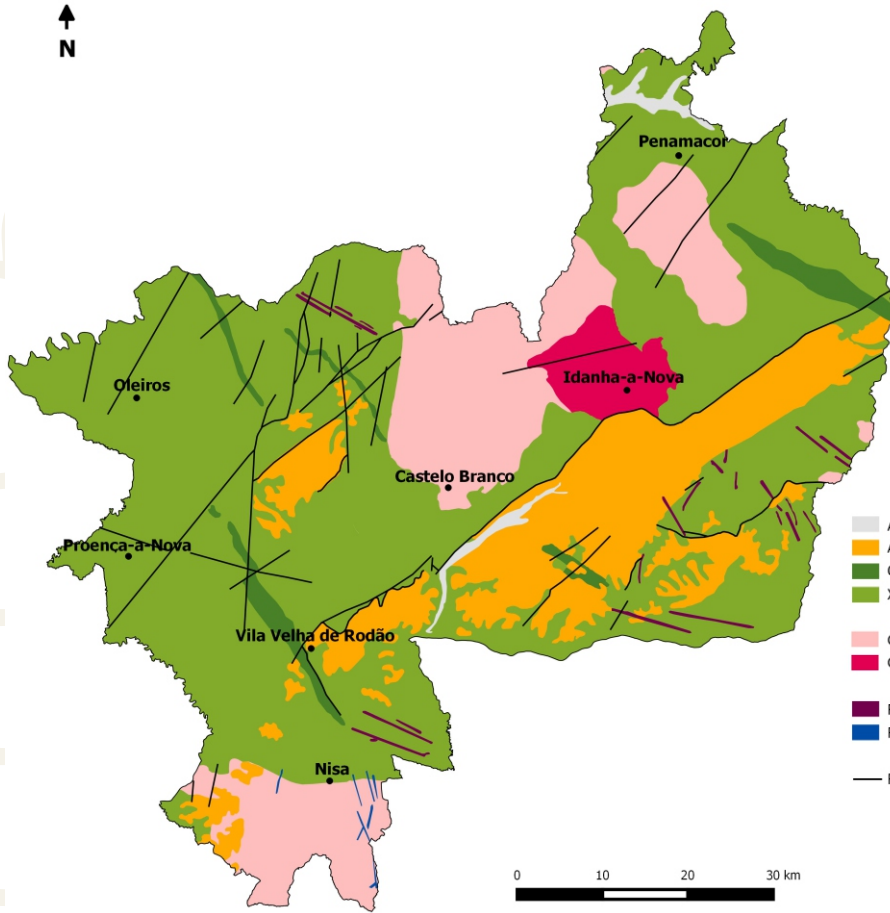
issuu.com/geoparknaturtejo



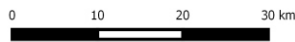
https://twitter.com/Geo_Naturtejo



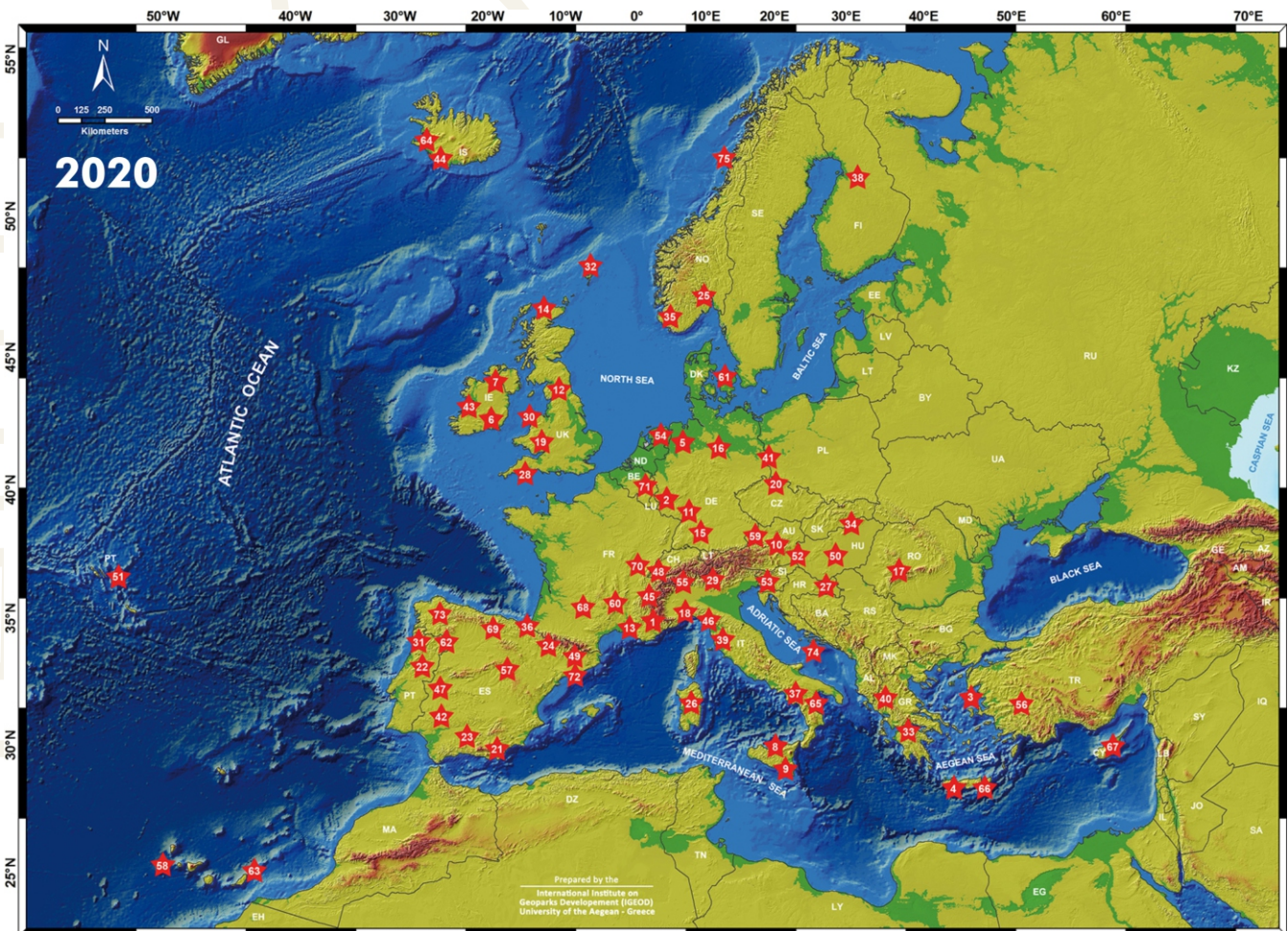
<https://www.linkedin.com/company/geoparknaturtejo/>



- Areias, argilas e arcoses - Quaternário (1Ma - Presente)
 - Arcoses, brechas e conglomerados - Paleogénico-Neogénico (50 - 2,6 Ma)
 - Quartzitos e xistos - Ordovícico-Silúrico Inferior (488 - 471 Ma)
 - Xistos e grauvaques - Neoproterozóico (610 - 542 Ma)
 - Granitos - Carbonífero (315 - 300 Ma)
 - Granodioritos - Ordovícico (480-472 Ma)
 - Rochas filonianas
 - Filões de quartzo
 - Falhas
- Ma - Milhões de anos*



Geoparks: Geologia humanizada





Edition- **Geopark Naturtejo, 2021**
Coordination - **Carlos Neto de Carvalho**
Texts - **Carlos Neto de Carvalho,**
Joana Rodrigues
Photos - **Joana Rodrigues,**
Carlos Neto de Carvalho, Jesus
Salazar (capa), Porta Raiana
Clipping - **Carla Jacinto e Alice Marcelo**
Design - **Layer [Design and Print Studio]**
Translation - **Carla Jacinto**
Editing - **Joana Rodrigues**



CRUZIANA

GEOPARK NATURTEJO DA MESETA MERIDIONAL EUROPEAN AND GLOBAL GEOPARK MONTHLY REPORT

www.geoparknaturtejo.com