



### **In this issue:**

Naturtejo UNESCO Global Geopark celebrates 15 years  
Territory loses almost 10.000 residents in 10 years  
Launch of the Archaeological Charter of the municipality of Proença-a-Nova  
...and more!

# **CRUZIANA**

**NATURTEJO UNESCO GLOBAL GEOPARK - E-MAGAZINE**



# MONTHLY ACTIVITIES

**July - CENSUS 2021: territory loses almost 10.000 inhabitants in 10 years.** The results of the last census are clear: the trend of population loss in the seven municipalities that constitute the territory of the Naturtejo UNESCO Global Geopark has worsened. The total population is now 86.661 inhabitants, 10.21% less than ten years ago and 15.85% less than 20 years ago. These results follow by default the population decline in Portugal, with 2% less and a total population of 10.347.892. Half of the total population of the country lives in the large urban centres of Lisboa and Porto and the asymmetry between coast and interior has increased. Regarding Naturtejo Geopark, the municipality that lost more population in the last decade was Nisa, with 20.1%. This situation has been repeating for decades. The municipality that lost less people is Vila Velha de Ródão, with 6.6% less. In fact, the municipality was the parish that lost the least people between 2011 and 2021, with a difference of 0.6% (10 inhabitants). The city of Castelo Branco is home to around 40% of the total population of the territory, 34.456 residents, but still lost 2.2% of its population after two decades of growth. All the remaining municipalities have lost more than two digits in population, following the trend of the last 50 years. The parish that lost the most people was Montalvão, with 34.4% less residents (290 inhabitants). The less inhabited parish in Naturtejo Geopark is Sobral, in the municipality of Oleiros, with 137 inhabitants. Actually, from the ten parishes that constitute Oleiros municipality, four have less than 200 inhabitants, in a total of six existing in all the Geopark in this situation. The female population corresponds to 52.5% of the total. From a total of 66 parishes in the territory, there are more men than women only in 9 of these, mostly in the municipality of Penamacor (Aranhas, Meimão, Pedrogão de S. Pedro-Bemposta and Salvador).

**July and August - Mosaic Festival between Conímbriga and Idanha-a-Velha.** The Mosaic Festival is an invitation to personal creativity within Heritage, to discover and dialogue with the Roman past and with one of its most surprising cultural expressions - the creative universe of Mosaic. The MosaicLab Project "Mosaic Festival - from Conímbriga to Idanha-a-Velha" proposes the revisiting of archaeological sites related to Romanization in the central region of Portugal, connecting the coast to the inland and promoting its visibility, at the same time as it wishes to congregate the numerous people interested in Cultural Heritage around the cultural and creative initiative.

The Roman Mosaic theme is transversal to all the sites associated to the "Mosaic Festival". The understanding that the Roman Mosaic is a relevant expression of Culture and Creativity in Time invites us to a reencounter with the heritage and to its actualization, through a renewed dialogue with its legacy. The activities developed at Idanha-a-Nova include workshops for the children enrolled in the Junior Space - Summer recreation centre, the Creative Laboratory for the general public, taking place at Raiano Cultural Centre, and workshops at Idanha-a-Velha for the general public.



**July - Geoproduct partner is new GEOfood partner.**

**July - Geoproduct partner is new GEOfood partner.** The Meat Geo do Prado, from the partner company Nature Fields joined the international brand GEOfood. Geoproduct of Naturtejo Geopark since 2016, the meat Geo Do Prado is produced through environmentally friendly methods and Animal Welfare. Nature is the source of inspiration and an inexhaustible challenge of this company aiming to provide its customers with meat 'From grassland to your plate'.

As a Geoproduct of Naturtejo Geopark, Nature Fields follows, since its beginning, the mission and values of GEOfood, being this adherence the natural evolution to an international brand and network focused on sustainable food in territories classified as a UNESCO Global Geopark. It is possible to find Meat Geo do Prado in restaurants in the region and all over the country, as well as in national distribution chains such as the Auchan and Intermarché groups, or Organic shops.

**July 1st - Meeting of partners of EUROACE Sport Cross-Border Project.** A new partners meeting of EUROACE Sport Cross-Border Project took place. It was made a point of situation of each partner and analysis of the project execution. Carla Jacinto represented Naturtejo Geopark.

**July 17th - Guided tours in Barrocal Park continue.** Despite the intense heat in the region during the summer, Barrocal Park continues to hold guided tours by the exceptional landscape it represents. This month two more tours took place to explain the heritage of Barrocal Park to the general public. Carlos Neto de Carvalho is the guide on duty.

**July 21st - Iberian Geologists visit Naturtejo Geopark.** Pedro Proença e Cunha is a well-known geologist from the University of Coimbra who has been dedicated to the study of the landscape evolution in the territory of Naturtejo Geopark during the last 40 years. Once again he came to the territory, this time with professors from the University of Salamanca and Nova from Lisboa, in the scope of a comparison study of the Portuguese Cenozoic geological heritage with the criteria used to select the same geological heritage typology in Spain. The researchers met Carlos Neto de Carvalho in the Barrocal Park, where he had the opportunity to explain some of the geoconservation work developed in Naturtejo Geopark, giving this granitic geomorphological heritage as an example.



**July 24th - Launch of the Archaeological Map of the municipality of Proença-a-Nova.** More than 50 people attended the launch of the book "Proença-a-Nova: Archaeology and Built Heritage" in the town centre of Proença-a-Nova. This book, coordinated by the archaeologist Francisco Henriques, was published by the Municipality of Proença-a-Nova and the Association for Studies of the High Tejo. 455 archaeological and built heritage elements were inventoried throughout the municipality, some of these sites were discovered and/or excavated in the scope of the International Archaeological Field of Proença-a-Nova coordinated by João Caninas and supported by Naturtejo UNESCO Global Geopark. The book was presented by the Mayor of Proença-a-Nova, the coordinator of the Directorate-General of Cultural Heritage of the Centre, the president of the Association for Studies of the High Tejo and the coordinator of this study. It is worth mentioning the participation of Carlos Neto de Carvalho in a chapter related to the interpretation of geological landscapes and the identification of the geological heritage of Proença-a-Nova.

# 15º ANIVERSÁRIO



## 15th ANNIVERSARY

26 Julho | July



**July 26th - Naturtejo UNESCO Global Geopark celebrates 15 years.** On July 26th, 2006 the Coordination Commission of the European Geoparks Network, gathered in the North Pennines Geopark (United Kingdom), approved unanimously the integration of the first Portuguese Geopark.

Congratulations to all who live in this territory recognized by UNESCO, to the associates and partners and to all who participate in the construction of Naturtejo Geopark!

Those who still don't know Naturtejo Geopark, accept the invitation from Judite, the Trilobite and make us a visit!

OBRIGADO  
POR CUIDAR  
DO NOSSO  
PAÍS.



#REDESCOLABORATIVASDEPORTUGAL  
#JUNTOSPELOTURISMOSUSTENTÁVEL

THANK YOU  
FOR TAKING  
CARE OF  
OUR  
COUNTRY.



#TOGETHERFORSUSTAINABLETOURISM

CADA  
PASSO SEU  
CONSTRÓI  
O NOSSO  
FUTURO.



#REDESCOLABORATIVASDEPORTUGAL  
#JUNTOSPELOTURISMOSUSTENTÁVEL

YOUR  
EVERY STEP  
BUILDS  
OUR  
FUTURE.



#TOGETHERFORSUSTAINABLETOURISM

#REDESCOLABORATIVASDEPORTUGAL #JUNTOSPELOTURISMOSUSTENTÁVEL  
#TOGETHERFORSUSTAINABLETOURISM



**July 28th - Geopark joins 'Thank you for looking after our country' campaign.** Naturtejo Geopark joins a national campaign under the slogan "Thank you for taking care of our country". This is an initiative of Tourism of Portugal and joins 12 tourism networks: ADERE Peneda-Gerês, Mountain Villages (Aldeias de Montanha), Schist Villages (Aldeias do Xisto), Historical Villages of Portugal (Aldeias Históricas de Portugal), Naturtejo Geopark, Heritage of Alentejo (Heranças do Alentejo), Places of the Alentejo Mountain (Lugares da Serra Alentejana), Magic Mountains (Montanhas Mágicas), Terra Fria Transmontana Route, Romanesque Route (Rota do Românico), Thermal Centre (Termas Centro) and Vicentine Route (Rota Vicentina). These collaborative networks have in common a vast offer in Nature Tourism and Active Tourism.

**July 28th - CCD Desert in interviews around the territory.** CCDesert is a collaborative project that gathers several academic research units and municipalities searching for ways to mitigate desertification processes in Portugal. The municipality of Idanha-a-Nova is marked as part of the national territory that will suffer from a tendency of increasing aridity in the next decades. The CCDesert came to Idanha-a-Nova to make a video with the projects marked as good practices in collaboration for the mitigation of demographic and climatic impacts. Carlos Neto de Carvalho, Naturtejo Geopark scientific coordinator, was interviewed in the beautiful and illustrative geological landscape of Idanha-a-Nova's Castle viewpoint, about the contributions of Naturtejo UNESCO Global Geopark to the heritage valorisation, local products and institutional collaborations to fight demographic imbalances.



**July 31st - Living Science in summer at Naturtejo Geopark.** Another edition of Living Science in summer has started, running between July 15th and September 15th with around 500 initiatives throughout the country. This program of the National Agency for Scientific and Technological Culture is marking its 25th anniversary in 2021. The first initiative held in the territory of what is now Naturtejo UNESCO Global Geopark happened in Penha Garcia 20 years ago.

Trees, fossils, ponds, boulders, miniature ecosystems, waterfalls or forests are some of the twelve proposals of Living Science Forest Centre for this summer in the territory, seven of which in partnership with Naturtejo Geopark.

The kick-off took place in Monsanto, with a walk through the Boulders Trail, through the narrow streets and trails of the village, discovering the Inselberg of Monsanto geomonument and its curious history with more than 300 million years.

# IMPACT OF GEOPARK IN MEDIA



## TV & Radio

- July 15th (RTP) - 129 million year old crocodile footprints discovered in Cabo Espichel
- July 15th (TSF Radio) - 129 million year old crocodile footprints discovered in Cabo Espichel
- July 20th (Porto Canal) - New arts festival proposes ten journeys through the inland of the Centre region
- July 26th (RTP) - Nature Maps: Music for the Portuguese countryside
- July 28th (TDS Rádio e Televisão do Sul) - Rota Vicentina included in the initiative of several tourism networks from North to South of the country
- July 30th (TSF) - "Nature Maps": ten weekends to explore the Centre in ten steps

## Newspapers & www

- July 1st (Reconquista) - Study identifies the main water reserves in Vila Velha de Ródão municipality
- July 8th (Reconquista) - Review of the Fossil Record - Palaeontological studies on international papers
- July 15th (Diário de Notícias) - 129 million year old crocodile footprints discovered in Cabo Espichel
- July 15th (Expresso) - 129 million year old crocodile footprints discovered in Cabo Espichel
- July 16th (Observador) - 129 million year old crocodile footprints discovered in Cabo Espichel
- July 16th (Jornal de Notícias) - 129 million year old crocodile footprints discovered in Cabo Espichel
- July 20th (Echo Boomer) - Nature Maps takes music and art to 10 Portuguese natural destinations
- July 20th (Região de Leiria) - New arts festival proposes ten journeys through the interior of the Centre region
- July 20th (Mutante) - Nature Maps: Music and Arts
- July 21st (Público) - Nature Maps project will trace new routes (of music and art) through the inland
- July 23rd (Treshoold Magazine) - Nature Maps: Music and art to chart new routes through the Portuguese inland
- July 26th (Revista Rua) - Nature Maps, culture tracing new routes through the inland
- July 27th (Ruído Sonoro) - Nature Maps, new inland routes mapped out by music and art
- July 28th (Sul Informação) - 12 collaborative networks launch national campaign for responsible tourism

# IMPACT OF GEOPARK IN MEDIA



## Newspapers & www

July 28th (Mais Algarve) - 12 collaborative networks launch national campaign for responsible tourism

July 29th (Time Out) - Nature Maps will take art and music to several locations in central Portugal

July 29th (Beiranews.pt) - Historic Villages of Portugal join national campaign for responsible tourism

July 29th (Sapo Viagens) - Historic Villages of Portugal join national campaign for responsible tourism

July 29th (Amarante Magazine) - Romanesque Route participates in national campaign for responsible tourism

July 29th (Tâmega TV) - Romanesque Route participates in national campaign for responsible tourism

July 30th (Diário As Beiras) - Six destinations in the Centre join the national campaign for "responsible tourism"

July 30th (Publituris) - Historic Villages of Portugal join national campaign for responsible tourism

July 30th (Press Tur) - Romanesque Route joins responsible tourism campaign

# SCIENTIFIC CONTRIBUTIONS FOR THE GEOPARK AND THE GEOSCIENCES



- NETO DE CARVALHO, C. – Paisagens Geológicas do Tejo à Cordilheira Central. In  
Henriques, F. (Ed.), Proença-a-Nova Arqueologia e Património construído. Associação de  
Estudos do Alto Tejo, Proença-a-Nova, 16-21.



# PROMOTION FOR THE GENERAL PUBLIC



- European Geoparks Network Newsletter – Joint Contribution: GEOFOOD for sustainable development in UNESCO Global Geoparks – An awarded winning IGCP Project
- Guide to River Beaches in the Central Region



## Centro Ciência Viva da Floresta

Atividades em parceria com **Geopark Naturtejo, Geoparque Mundial da UNESCO**

- 31/07 - **Barrocais de Monsanto** (Monsanto)
- 03/08 - **Os Fósseis de Penha Garcia** (Penha Garcia)
- 06/08 - **O Ouro das Portas de Almourão** (Sobral Fernando)
- 13/08 - **Os Segredos do Vale do Almourão via “Menina dos Medos”** (Sobral Fernando)
- 27/08 - **Os Segredos do Vale do Almourão** (Sobral Fernando)
- 04/09 - **Biodiversidade e Geodiversidade da GeoRota do Orvalho** (Orvalho)



# 1º CONCURSO FOTOGRAFIA DE

Geoparques Mundiais da UNESCO Portugueses

15-07-21

30-09-21



# PROMOTION FOR THE GENERAL PUBLIC



## FESTA DO MOSAICO

de CONÍMBRIGA a IDANHA-A-VELHA

**IDANHA-A-NOVA**  
Julho e Agosto de 2021



## MISSA Mozart 230

Projeto Art'Beira - Coro Misto da Beira Interior

### 8. AGOSTO . 2021

09:00 - Igreja Matriz de Salvaterra do Extremo

12:00 - Igreja Matriz de Penha Garcia

### 15. AGOSTO . 2021

09:00 - Igreja Matriz de Medelim

16:00 - Igreja Matriz de Proença-a-Velha



# BARROCAL

PARQUE

**EUROPE'S LEADING TOURIST ATTRACTION DEVELOPMENT PROJECT 2021**

Barrocal Park - Outstanding Nature in the Heart of the City of Castelo Branco, Portugal

**VOTE FOR US**

barrocal-parque.pt

#REDESCOLABORATIVASDEPORTUGAL #JUNTOSPELOTURISMOSUSTENTÁVEL  
#TOGETHERFORSUSTAINABLETOURISM

## OBRIGADO POR CUIDAR DO NOSSO PAÍS.

THANK YOU FOR TAKING CARE OF OUR COUNTRY.

## CADA PASSO SEU CONSTRÓI O NOSSO FUTURO.

YOUR EVERY STEP BUILDS OUR FUTURE.

Abasteça-se com produtos locais  
Stock up on local produce and products.

Invista o valor justo pela qualidade  
Invest a fair price for quality.

Respeite os ritmos de vida locais  
Respect the rhythms of local life.

Informe-se sobre a região e as suas particularidades  
Find out about the region and its particularities.

Deixe menos lixo do que encontrou  
Leave behind less rubbish than you found.

Não sobrecarregue locais sensíveis  
Don't overload sensitive places.

# PROMOTION FOR THE GENERAL PUBLIC



13 AÇÃO CLIMÁTICA



## AÇÃO CLIMÁTICA

Geoparques Mundiais da UNESCO Portugueses



### Visit Naturtejo Geopark in:



[www.geoparknaturtejo.com](http://www.geoparknaturtejo.com)



[www.facebook.com/geoparknaturtejo.mesetameridional](https://www.facebook.com/geoparknaturtejo.mesetameridional)



[www.instagram.com/geopark\\_naturtejo/](https://www.instagram.com/geopark_naturtejo/)



[www.youtube.com/geoparknaturtejo](https://www.youtube.com/geoparknaturtejo)



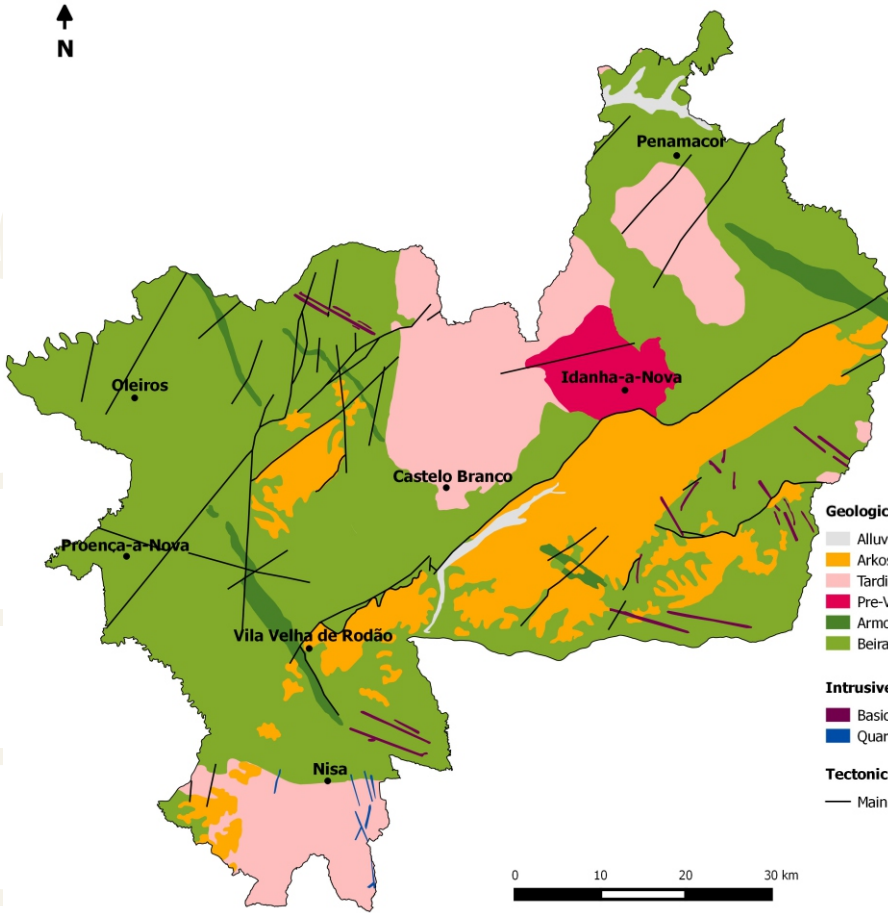
[issuu.com/geoparknaturtejo](https://issuu.com/geoparknaturtejo)



[https://twitter.com/Geo\\_Naturtejo](https://twitter.com/Geo_Naturtejo)



<https://www.linkedin.com/company/geoparknaturtejo/>



**Geological Formations (Ma-Million years)**

- Alluvium and fluvial terraces - Plistocene-Holocene (1Ma-present)
- Arkoses, breccias and conglomerates - Eocene-Pliocene (50-2.6Ma)
- Tardi-Variscan orogenic granites (315-300Ma)
- Pre-Variscan granodiorites (480-472Ma)
- Armorican Quartzite and schists - Ordovician-Lower Silurian (488-435Ma)
- Beiras Group (schists and greywackes) - Neoproterozoic (610-542Ma)

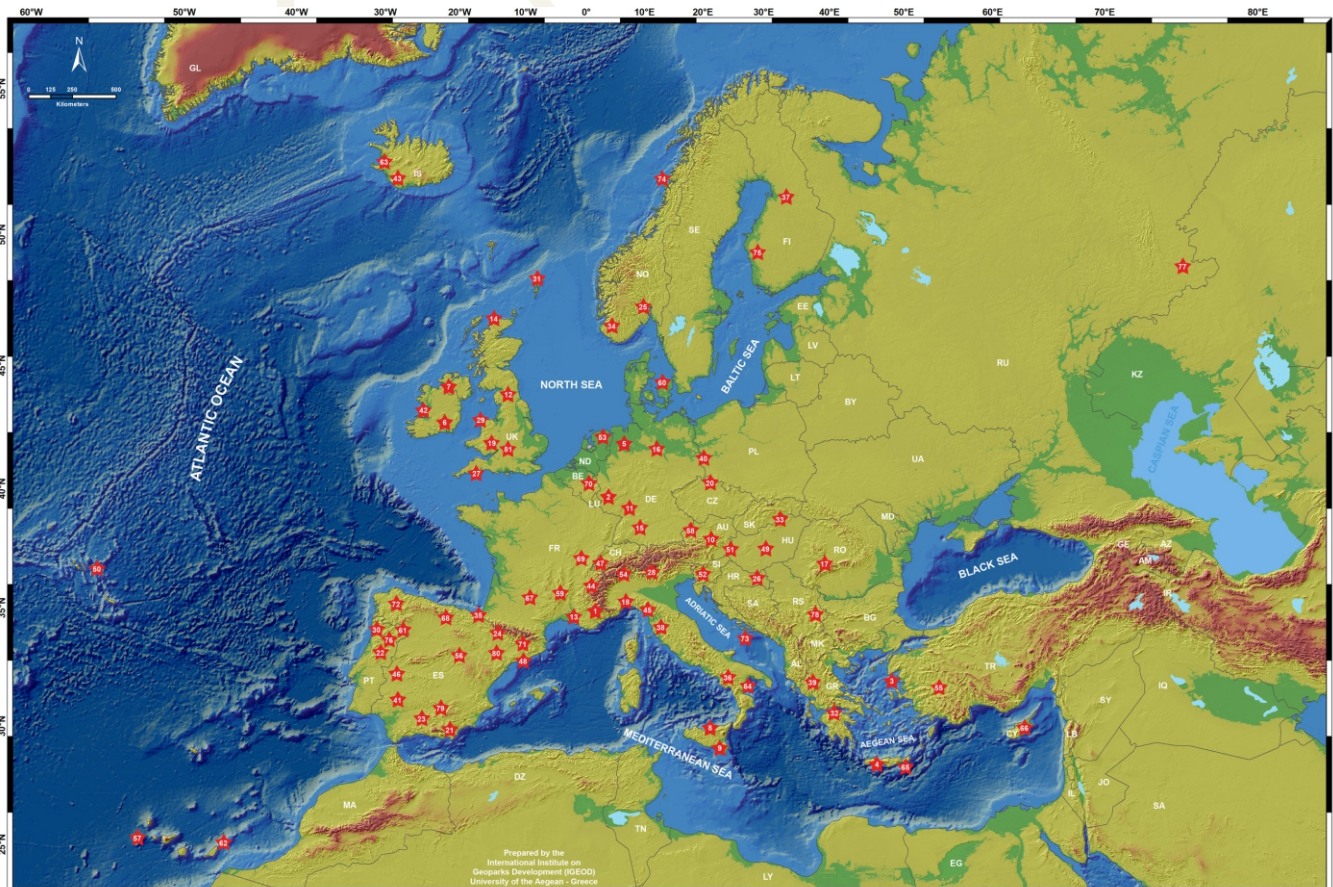
**Intrusive rocks**

- Basic rocks, aplites and pegmatites
- Quartz

**Tectonic**

- Main faults

## Geoparks: Geology with human face





Edition - **Geopark Naturtejo, 2021**  
Coordination - **Carlos Neto de Carvalho**  
Texts - **Carlos Neto de Carvalho,  
Joana Rodrigues, Carla Jacinto**  
Photos - **Carlos Neto de  
Carvalho, Joana Rodrigues**  
Clipping - **Carla Jacinto e Alice Marcelo**  
Design - **Layer [Design and Print Studio]**  
Translation - **Carla Jacinto**  
Editing - **Joana Rodrigues**



**CRUZIANA**

GEOPARK NATURTEJO DA MESETA MERIDIONAL EUROPEAN AND GLOBAL GEOPARK MONTHLY REPORT

[www.geoparknaturtejo.com](http://www.geoparknaturtejo.com)

**NATURTEJO UNESCO GLOBAL GEOPARK - E-MAGAZINE**