



### **In this issue:**

New scientific project reveals the oldest rocks of Beira Baixa  
Naturtejo Geopark at the Ornithological Tourism Fair at Monfrague Biosphere Reserve  
RTP live show at Naturtejo Geopark's geosites  
Meeting of the Advisory Council for the Cross border Biosphere Reserve Tejo/Tajo Team  
discusses plan of activities for 2020  
...and more!!

# **CRUZIANA**

**NATURTEJO UNESCO GLOBAL GEOPARK - E-MAGAZINE**



# MONTHLY ACTIVITIES

## **3 to 5 February - Reforestation in Tapada do Sobral (Idanha-a-Nova) to celebrate the Autochthonous Forest.**

On this day, still with the intention to celebrate and learn more about the Portuguese Autochthonous Forest, an activity of planting and sowing was organised in Tapada do Sobral close to Idanha-a-Nova. This time, 96 students from the 9 classes of the Professional School of Raia in Idanha-a-Nova - EPRIN planted and sowed small trees and acorns of oaks, cork oaks and holm-oaks. The students were accompanied by 7 teachers and the activity was carried out by the monitors Manuela Catana and Catarina Caria.

## **5 February - Meeting of the Advisory Council for the Crossborder Biosphere Reserve Tejo/Tajo Team discusses plan of activities for 2020.**

Another meeting of the Advisory Council of the Crossborder Biosphere Reserve Tejo/Tajo Internacional was held, a body composed of the Municipal Councils, Parish Village Councils and other main actors of the territory, of which Geopark Naturtejo is part. The Activities Plan for 2020 and the Territory with Life project were discussed, as well as the celebration of the International Day of Biosphere Reserves and the RBTTTI Day. The meeting was attended by representatives of the Spanish part of the territory and the Naturtejo Geopark was represented by Carla Jacinto, Joana Rodrigues and Manuela Catana.

## **8 February - RTP live show at Naturtejo Geopark's geosites.**

The program "Here Portugal" at RTP1 dedicated to Thermal Springs of Central Portugal took place live from the Thermal Spa complex of Termas de Monfortinho. The eight-hour programme allowed the promotion in Portugal and throughout the world of Termas de Monfortinho's Spa and the potentialities of the municipality of Idanha-a-Nova, in a journey through the heritage of this UNESCO territory, the handicraft, history, gastronomy, culture and tourism. Naturtejo Geopark and a bit of its geological history were introduced by Carlos Neto de Carvalho at the Segura granite gorge Geomonument. The thermal spa carried out water tasting, as well as an explanation about its geological origins, by Joana Rodrigues.

## **9 February - Nortenha Travels & Tourism visits Naturtejo Geopark.**

A group of 54 tourists visited Monsanto last weekend. The visit was guided by Susana Santos from the partner company Geolife Tours.



## **11 February - Workshop "Autochthonous Trees go to School".**

About 26 students from the Elementary School and Kindergarten of Penha Garcia, from the School Group José Silvestre Ribeiro, Idanha-a-Nova, participated in the workshop. The activity was promoted in partnership between the Educational Service of the Municipality of Idanha-a-Nova and Naturtejo UNESCO Global Geopark. Students learned which are the native trees of our country and the region, sowed cork oak acorns in milk boxes, and those trees that will born will transplant to a definitive place next autumn. They also learned about the importance of preserving our autochthonous forest. The activity was promoted by the monitors Manuela Catana and Catarina Caria, accompanied by 3 teachers.



**15 February - New scientific projects reveals the oldest rocks of Beira Baixa.** A new scientific project will be implemented in the territory of Naturtejo UNESCO Global. The "Break-Up" project aims to bring to light the oldest rocks in Beira Baixa region, which are among the oldest rocks in the Iberian Peninsula. The project is coordinated by Professor Martim Chichorro of the Faculty of Sciences and Technology of University Nova de Lisboa and includes several partners, such as the Faculty of Sciences of the University of Lisboa among other Portuguese universities, the National Energy and Geology Laboratory, the British Geological Survey and the Geology Service of the Municipality of Idanha-a-Nova. "Break-Up" focuses on the important geodiversity that gave the region recognition as UNESCO territory, in particular the geomonuments of Penha and the Erges Valley. The objective of the scientific cooperation, which may count on the support of the Municipality of Idanha-a-Nova under the protocol signature between it and the FCT-UNL, is to understand how the so-called Rheic Ocean, whose geological record is evident in the rocks of this region dating back almost 600 million years, was opened. The scientific research and sampling work started this weekend with the participation of the project coordinator, Professor Telmo Bento Santos of the Faculty of Sciences of the University of Lisboa, and Carlos Neto de Carvalho, geologist of the Municipality of Idanha-a-Nova and scientific coordinator of Naturtejo Geopark. These works were also carried out under the Master thesis of Lourenço Crispim, student of the Faculty of Sciences of the University of Lisboa, which aims the geochemical study of rocks of magmatic and sedimentary origin that can be found in Salvaterra do Extremo and Penha Garcia. The identification of tiny crystals contained in these rocks known as zircons will make possible to date the rocks and the geological processes from which they result, as well as to identify the provenance of the materials allowing for paleogeographical reconstitutions and to understand the geological evolution of Beira Baixa in the global context over time. UNESCO geoparks are Science territories, where scientific research should be supported aiming to share relevant scientific knowledge in educational activities, teacher training in the region and tourist information media.



**21 February - Carnival Parade of the students of the Kindergarten and Rosmaninhal Nursery inspired by the biodiversity of Geopark Naturtejo.**

**21 February - Carnival Parade of the students of the Kindergarten and Rosmaninhal Nursery inspired by the biodiversity of Geopark Naturtejo.** The activity was attended by 10 students from the Rosmaninhal Nursery and Kindergarten, educators, helpers and some parents, who held a Carnival parade through the streets of the village of Rosmaninhal. The parade included a visit to the Retirement Home of Santa Casa da Misericórdia. Even the Rangers of Naturtejo Geopark, Manuela Catana and Catarina Caria joined the parade. The Carnival costumes were inspired by the Biodiversity of Naturtejo Geopark's territory (especially plants and animals surrounding the Rosmaninhal village). The parish of Rosmaninhal is also integrated in the area of the International Tejo Natural Park and the Biosphere Reserve of Tejo/Tajo International.

**22 to 23 February - Olive Oil and Smoked Sausages Festival in Proença-a-Velha.** The Olive Oil and Smoked Sausage Festival of Proença-a-Velha, which is now on its 18th edition, promotes the flavours and knowledge of the Bio-Region of Idanha-a-Nova. With lots of music, entertainment, product tastings, guided tours and cultural and gastronomy workshops. As usual, the Olive Oil and Smoking Sausages Festival took place next to the Olive Oil milling Museum of Proença-a-Velha, a museum complex that has traditional and modern technologies to tell the history of 2000 years of olive oil production in the region and project the future of 'liquid gold'.



**24 February - Training Course for guides at Naturtejo Geopark.** A training course for new Naturtejo Geopark guides took place, focused on the Fossils Trail of Penha Garcia and the Boulders Trail in Monsanto. Tourist resources were explored, namely visiting sites, tourist infrastructures, activities and events, paths and technical information about the trails and points of interest. Heritage values were also addressed, with emphasis on geological heritage and regional geology, as well as educational content.



**29 February - At the Fossils Trail of Penha Garcia searching for Trilobites traces (Cruziana).** 18 adult students and one teacher, in the context of the Portuguese course at the Official Language School from Villanueva de la Serena-Don Benito, Spain, carried out the Field Trip in Penha Garcia. Students got to know the Ichnological Park of Penha Garcia and its Natural and Historical-Cultural Heritage through the Fossils Trail and a visit to the Fossils House and the old windmills. The Field Trip was boosted by the monitor Catarina Caria.



**29 February - Reforestation action of the National Field of Scouting Activities, at Monte Trigo, Idanha-a-Nova.** As part of the celebrations of its Fiftieth Anniversary, the Scout Grouping 326 of Idanha-a-Nova carried out a plantation of about 200 native trees (Holm and Oak trees) in the National Scouting Field (CNAE), at Monte de Trigo, in Idanha-a-Nova. This reforestation took place in an area that had burned two years ago. Not only Scouts but also their families, friends and the Educational Service of Naturtejo Geopark participated in this activity, which also includes the "Trees for the World" Project, with a total of about 60 people.



**28 February to 1 March - Naturtejo Geopark at the International Birdwatching Fair in Spain.** Naturtejo Geopark participated in FIO 2020 - International Birdwatching Fair. This fair was aimed at professionals and nature lovers and brought together specialized companies, tourism destinations and associations, with a very diverse program that included conferences, guided tours and workshops. At its own stand, the territory of Naturtejo Geopark and the tourist offer of Nature and Birdwatching were presented by Jorge Costa, including the new leaflets of walking trails.

# IMPACT OF GEOPARK IN MEDIA



## TV & Radio

8 February – RTP1 TV Show “Here Portugal” – Termas de Monfortinho

19 February – RTP Notícias - Naturtejo Geopark scientific project reveals the oldest rocks of Beira Baixa

## Newspapers & www

12 February (Povo da Beira) – Termas de Monfortinho promoted by RTP

12 February (Gazeta do Interior) – Termas de Monfortinho highlighted in “Here Portugal”

18 February (Diário Digital) – New scientific project reveals oldest rocks of Beira Baixa

19 February (Povo da Beira) - New scientific project reveals oldest rocks of Beira Baixa

19 February (Centro Nacional da Cultura) - New scientific project reveals oldest rocks of Beira Baixa

26 February (Gazeta do Interior) – Break-Up reveals the oldest rocks of Beira Baixa

27 February (Reconquista) – Naturtejo Project studies Beira Baixa – Scientists bring to light the oldest rocks



**Visit Naturtejo Geopark in:**



[www.geoparknaturtejo.com](http://www.geoparknaturtejo.com)



[www.facebook.com/geoparknaturtejo.mesetameridional](http://www.facebook.com/geoparknaturtejo.mesetameridional)



[www.instagram.com/geopark\\_naturtejo/](http://www.instagram.com/geopark_naturtejo/)



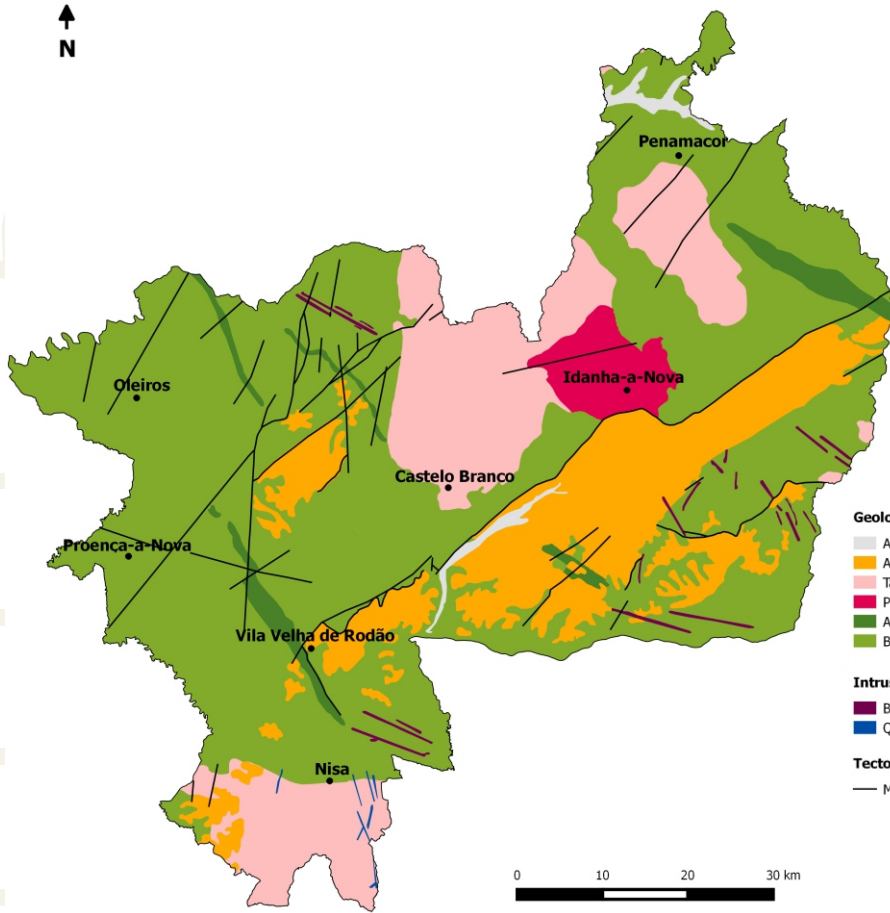
[www.youtube.com/geoparknaturtejo](http://www.youtube.com/geoparknaturtejo)



[issuu.com/geoparknaturtejo](http://issuu.com/geoparknaturtejo)



[www.slideshare.net/geoparknaturtejomesetameridional](http://www.slideshare.net/geoparknaturtejomesetameridional)



#### Geological Formations (Ma-Million years)

- Alluvium and fluvial terraces - Pliocene-Holocene (1Ma-present)
- Arkoses, breccias and conglomerates - Eocene-Pliocene (50-2.6Ma)
- Tardi-Variscan orogenic granites (315-300Ma)
- Pre-Variscan granodiorites (480-472Ma)
- Armorican Quartzite and schists - Ordovician-Lower Silurian (488-435Ma)
- Beiras Group (schists and greywackes) - Neoproterozoic (610-542Ma)

#### Intrusive rocks

- Basic rocks, aplites and pegmatites
- Quartz

#### Tectonic

- Main faults

## Geoparks: Geology with human face







Edition - **Geopark Naturtejo**, 2020  
Coordination - **Carlos Neto de Carvalho**  
Texts - **Carlos Neto de Carvalho, Joana Rodrigues,  
Manuela Catana, Catarina Caria,**  
Municipality of Idanha-a-Nova  
Photos - **Manuela Catana, Joana Rodrigues,  
Carlos Neto de Carvalho, Município de Idanha-a-Nova**  
Clipping - **Carla Jacinto e Alice Marcelo**  
Design - **Layer [Design and Print Studio]**  
Translation - **Carla Jacinto**  
Editing - **Joana Rodrigues**



**CRUZIANA**

GEOPARK NATURTEJO DA MESETA MERIDIONAL EUROPEAN AND GLOBAL GEOPARK MONTHLY REPORT

[www.geoparknaturtejo.com](http://www.geoparknaturtejo.com)