



**In this issue:**

Geopark at Pinewood Fair in Oleiros  
Archaeological Camp in Proença-a-Nova  
Geology in Summer Activities  
...and more!

# CRUZIANA

NATURTEJO UNESCO GLOBAL GEOPARK - E-MAGAZINE

## GEO-stories of our places and people: Aranhas

Aranhas nests between the bow of Penha Garcia Mountain and the top of Senhora do Bom Sucesso hill. Around them, the plain extends in the transition between the granite of Monsanto-Penamacor and the metamorphic rocks of Beiras Group, at 430 m altitude. It is perhaps the smallest parish in the territory of Naturtejo Geopark, with only 5.5 km<sup>2</sup> made of windrows of granite soils, with a small fringe forest to the north. Then the conical head erupts 100m above the plain, undecipherable, crowned with a chapel dedicated to Senhora do Bom Sucesso, but certainly the landmark of a very ancient settlement. The ruins of Atalaia remind us the history of this place as border territory. But the present is quiet for its 353 inhabitants. The architecture of granite two-floor houses with balcony dominates the village, which nowadays is extended to Porto Novo. The streets are made of silences during the day, the forces that still resist are concentrated on working the land. In winter, you can only see the chimneys but in the summer, the streets get full of people to feel the fresh breeze of the mountain and neighbours grasp the opportunity to exchange ideas and to knit. The name of this place meets with the spiders of the looms now practically extinct. But local traditions vibrate at the Smoking Rods Festival, a unique procession in the region celebrated in January, or in Banquet of Aranhas in May, events capable of attracting families and outsiders to this cosy place. Located in the vicinity of Monsanto and in the prolongation of the magnificent Appalachian crest of Penha Garcia, looking at Baságueda river, Aranhas has exceptional conditions to develop quality tourism in rural areas, taking advantage of its landscapes, location and culture.

### Bibliography

- LOPES MARCELO, M.M. 1986. Aranhas, ontem e hoje: monografia da evolução histórica, sócio-económica, património etnográfico e usos e costumes. Liga dos Amigos das Aranhas, 274 pp.
- NABAIS, J. (coord.) 2016. Carta Arqueológica de Penamacor. Exposição. Câmara Municipal de Penamacor, 73 pp.
- NUNES, J.L. (1979) – Roteiro do concelho de Penamacor. Câmara Municipal de Penamacor.
- NUNES, J.L. (1988) – Novo roteiro do concelho de Penamacor. Câmara Municipal de Penamacor.
- VILAS BOAS, M., NETO DE CARVALHO, C., RODRIGUES, J.C. & VALENTE, A. (2015) – Património Geológico de Penamacor: inventário de Geossítios e propostas para a sua valorização. Açafa Online 10, 23-72.

The editor  
Carlos Neto de Carvalho  
Scientific coordinator  
Geologist

Cover: (Projecto Objectiva: Geopark)





# MONTHLY ACTIVITIES



**5 to 30 August – Another edition of the Archaeological Camp of Proença-a-Nova to continue research in the territory.** The archaeological excavations of the VIII Archaeological Camp of Proença-a-Nova - CAPN 2019 contemplated a continuity work in two archaeological sites: the megalithic dolmen of Cabeço da Anta (7th annual campaign) and the fortified settlement of Chão do Trigo's Castle (3rd annual campaign). In the first place, the investigations focused fundamentally on the burial chamber, aiming to complete the work of this substructure and qualifying it to receive visits, without prejudice to work in other sectors. Like previous years, the CAPN program also included an archaeological prospection elsewhere in the county and a study visit to the territory.

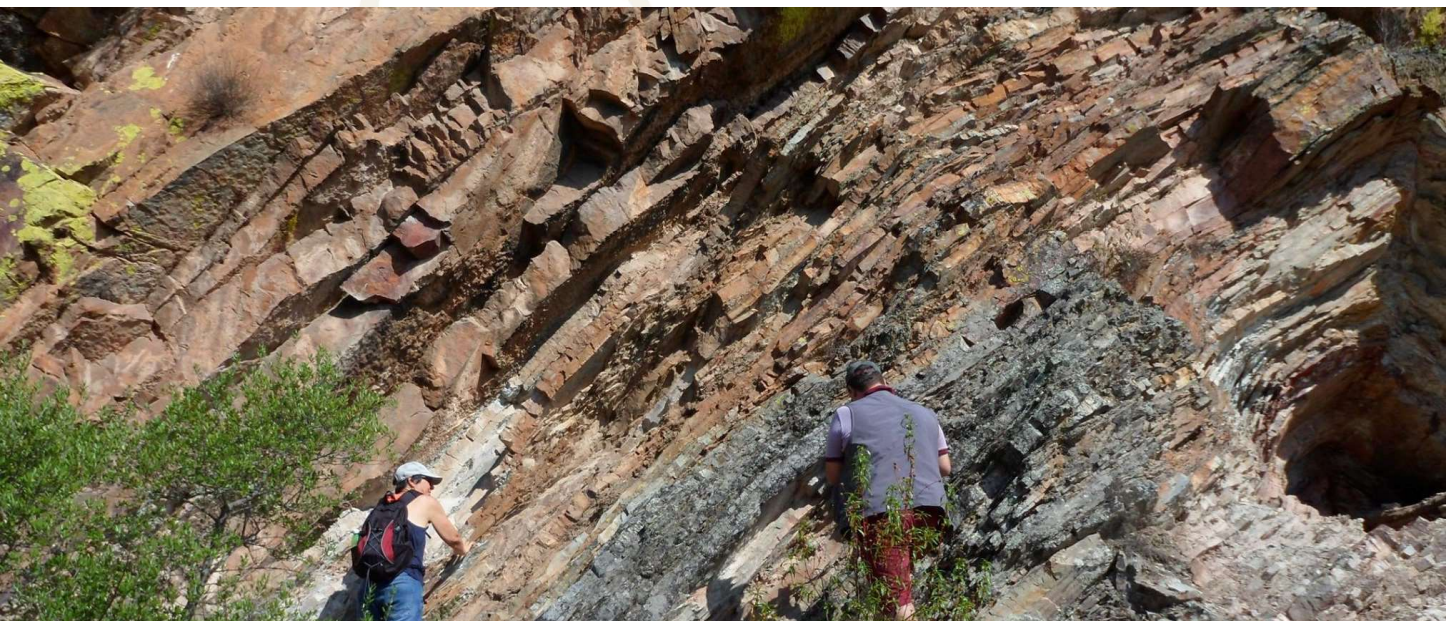
Since 2011, the Municipality of Proença-a-Nova organizes the Archaeological Camp, in partnership with the Association for Studies of the High Tejo, always supported by Naturtejo Geopark, with the dual purpose of deepening knowledge about the monuments of different periods in the county and, on the other hand, providing the opportunity to train students from various parts of the country and the world. "It is an exchange that has brought forth, as we have advanced significantly in the information we have about megalithic monuments or the forts and batteries, only to name two of the themes that have been studied the most so far," says João Lobo, president of the Municipality. In addition, he adds, "the archaeological camp allows us to enrich our tourist itinerary: at this time it is already possible to visit the dolmen of Cão do Ribeiro and the Fort of Batarias, after they have been intervened to welcome visits with the development of infrastructures and information material. Soon we will have other points that are being studied, and the assets found will be made available in the future House of Memory and Arts which will be born in Largo da Devesa in Proença-a-Nova".

On the 16th and 23rd two conferences were held at the House of Associations, with free admission: the first with the theme "Megalithic monuments: recover and value, for what?", with Pedro Manuel Sobral de Carvalho, master in archaeology; the second addressed "The dynamics of Roman implantation in Tejo valley" and was attended by João Pimenta, master of archaeology and technician at the Municipality of Vila Franca de Xira.





**7 to 11 August - Geopark at Pinewood Fair in Oleiros.** During 5 days, Naturtejo Geopark attended the Pinewood Fair in Oleiros, with a stand in the institutional hall, dedicated to regional promotion, an edition marked by several new features. This year the Pinewood Fair, again stated itself as an Eco Event, assuming important environmental commitments and took place in a new space and in a renewed format. The opening ceremony of this 19th edition, in which 120 exhibitors participated, was attended by the Secretary of State for Science, Technology and Higher Education, João Sobrinho Teixeira. As usual, Naturtejo Geopark attended with a small promotional stand, a space where Jorge Costa and Joana Rodrigues presented the territory and suggestions for experiences for the summer of 2019.



**10 and 30 August - Geology in the summer: Secrets of Almourão.** Living Science in the Summer returned to Sobral Fernando (Proença-a-Nova), with two editions of the activity "Secrets of Almourão Valley", a walk through important geosites in the valley of the Ocreza River, both coordinated by Marta Palhim, from the Living Science Forest Centre.





**13 to 15 August – Templar Penha Garcia.** Medieval adventures, historical recreations, music, gastronomy and other animation rose to Penha Garcia to the return of Templar Penha Garcia. The ethnographic journeys took place in these three days in the late afternoon and night out, also featuring a medieval market, parades, fire theatre, themed dances and a castle robbery, among other attractions "evoking the Time of the Templars". This is an organization of the Municipality of Idanha-a-Nova, in partnership with the Parish of Penha Garcia. The organization also intends to reinforce the notoriety of the village as a tourist destination with the UNESCO seal, the United Nations organization for education, science and culture.



**14 August – (Re)discover the waters of Portugal and Naturtejo Geopark.** Naturtejo Geopark and the Living Science Forest Centre took Living Science in the Summer in Network to the River Beach of Fróia, for the action "(Re)discover the waters of Portugal and Naturtejo Geopark". On a very hot morning, in the banks of Fróia Stream, 15 participants explored the Geodiversity of Naturtejo Geopark and Portugal through a fun blind water tasting, with the geologist Joana Rodrigues and Living Science Centre monitor Marta Palmim. The Acqua Challenge included bottled waters, thermal waters, natural carbonated waters and sparkling waters, many of them well known to all participants. On the side was the idea that water has no colour, no smell, and no flavour. The underground circuits of those waters were explored, through different geological contexts giving them a unique flavour.





**23 August -Penha Garcia's Fossils... in the rock and in the solar oven!** Naturtejo Geopark and the Living Science Forest Centre once again promoted the action of Living Science in the summer "Penha Garcia's fossils... in the rock and in the solar oven!", with a walk along the Fossils Trail in Penha Garcia (Idanha-a-Nova), where the remains of the early ocean of about 500 million years ago preserved in the rocks of the Ponsul Valley were explored. Participants made biscuits in the form of fossils cooked in a solar oven, which quickly reached 160° C, on a typical summer day of the region, with plenty of sun! The action was boosted by Joana Rodrigues from Naturtejo Geopark, Marta Palhim, Patrícia Cristóvão and Carla Laia from the Living Science Forest Centre.



# IMPACT OF GEOPARK IN MEDIA



## Newspapers & www

August (Oleiros Magazine) – Cherry workshop recreates French invasions

August (Oleiros Magazine) – Naturtejo Geopark certification process - UNESCO evaluates the municipality

August (Oleiros Magazine) – Latin America and the Caribbean – Ambassadors visit Oleiros

1 August (Reconquista) – Within the framework of the Geopark certification - UNESCO evaluates Barrocal



# IMPACT OF GEOPARK IN MEDIA



**10 Freguesias. Experiências**

**28 DE SETEMBRO '19**

**ATELIÊ DO XISTO E DA CORTIÇA**

*Freguesia de Álvaro*

- » Passeio Pedestre com Interpretações «
- » Recreação Histórica "Como Álvaro se fez de Álvaro" «  
Pela companhia de Teatro VIVARTE
- » Almoço - 10€ «

Inscrições até ao dia 20 de Setembro  
Na casa da Cultura de Oleiros 1272 680 2393

**COLOQUIO VIAS DA BEIRA BAIXA: ABORDAGEM HISTÓRICA E GEOGRÁFICA À MOBILIDADE**

09h30 Receção dos participantes e abertura dos trabalhos  
Sessão de Abertura João Lobo, Presidente da Câmara Municipal de Proença-a-Nova e Aníbal Flambo, Major-General do Exército Português

**1ª Sessão**  
Moderador: António Maia Mascarenhas, Tenente-General do Exército Português  
10h00 **Mobilidade, um olhar antropológico**  
Pedro Castro Henriques, Antropólogo  
10h20 **Beira Interior: território e mobilidade humana na Pré e Proto-história**  
Pedro Baptista, Centro de Estudos em Arqueologia, Artes e Ciências do Património da Universidade de Coimbra  
10h40 **Mobilidade e rotas de invasão da Beira Baixa**  
Luís Albuquerque, Coronel do Exército Português  
11h00 Debate  
11h10 - **Valorização paisagística e desenvolvimento turístico com a estruturação de percursos pedestres: exemplos com a análise da situação atual no Geopark Naturtejo – Geoparque Mundial da UNESCO** (casitas de Castelo Branco e Portugal)  
Carlos Carvalho, Geopark Naturtejo  
11h30 - **Caminhos de Arrieros de la Mixteca Alta (1900-1950)**  
Xochitl Ramirez Miguel, Universidad Nacional Autónoma de México, Geoparque de Mixteca Alta (UNESCO)  
11h50 Debate  
12h15 Pausa - Almoço livre

**2ª Sessão**  
Moderador: António Manuel Silva, Universidade Sénior de Proença-a-Nova  
14h30 **Caminhos de transumância Serra da Estrela - Beira Baixa. Memória e valorização contemporânea**  
Rui Ferreira, Departamento de Geografia e Turismo da Faculdade de Letras da Universidade de Coimbra  
14h50 **Contrabando e mobilidades transfronteiriças no concelho de Idanha-a-Nova**  
Eduarda Rovisco, CRIA - Centro em Rede de Investigação em Antropologia ISCTE - Instituto Universitário de Lisboa  
15h10 **Caminhos de peregrinação e romaria na antiga província da Beira Baixa**  
Joaquim Candelas da Silva, Academia Portuguesa da História  
15h30 Debate  
15h40 **Navegabilidade do rio Tejo e os caminhos de sirga**  
António Nabais, Iogus Universitat  
16h00 **A Linha da Beira Baixa: modernidade industrial e paisagem**  
Jorge Custódio, Instituto de História Contemporânea e Associação Portuguesa de Arqueologia Industrial  
16h20 **A rede viária durante a romanização da Beira Baixa**  
Pedro Carvalho, Instituto de Arqueologia da Faculdade de Letras da Universidade de Coimbra  
16h40 **Os novos desafios para a mobilidade sustentável no séc. XXI**  
Orador a confirmar  
17h00 Debate final  
Sessão de encerramento  
João Paulo Catarino, Secretário de Estado da Valorização do Interior

**JORNADAS EUROPEIAS DO PATRIMÓNIO 2019**  
ARTES PATRIMÓNIO LAZER

**28 | SET**

**EDIFÍCIO DOS FORTES E BATERIAS SOBREIRA FORMOSA**

INSCRIÇÕES GRATUITAS  
OBRA GATÓMICA - NO POSTO DE TURISMO  
postodeturismo@cm-proencanova.pt  
939 623 269

[www.patrimoniocultural.gov.pt](http://www.patrimoniocultural.gov.pt)

**Prova de Águas**

**A Água não tem sabor?**

**Venha descobrir**  
**dia 11 de Setembro nas**  
**TERMAS DE MONFORTINHO**

**Ao longo de toda a manhã**  
**(a partir das 10h)**

**Entrada livre**



# IMPACT OF GEOPARK IN MEDIA



## TERMAS DE MONFORTINHO ANIMAÇÃO TERMAL AGOSTO / SETEMBRO DE 2019

### PROGRAMAÇÃO SETEMBRO DE 2019

- 3** **Visita guiada nocturna "Rota do Erges" (trajeto parcial)**  
Termas de Monfortinho  
Ponto de encontro: Posto de Turismo de Termas de Monfortinho, 21h00  
Inscrições: até às 14h00 do dia 3 para turismo@cm-idanhaova.pt (limite de participantes: 30)
- 4** **Música Fado Branco**  
Piscinas Municipais  
Termas de Monfortinho  
21h30
- 6 a 8** **Festa em honra de N. Sra. da Piedade**  
Zebreira
- 6 a 8** **Festa em honra de N. Sra. da Azenha**  
Monsanto
- 10** **Visita guiada nocturna pela Aldeia Histórica de Monsanto**  
Ponto de encontro: Centro de Interpretação | Posto de Turismo de Monsanto, 21h00  
Inscrições: até às 14h00 do dia 10 para turismo@cm-idanhaova.pt (limite de participantes: 30)
- 11** **Teatro A Refeição, por AJIDANHA**  
Sala Polivalente das Piscinas Municipais  
Termas de Monfortinho  
21h30
- 14** **Música Filarmónica Idanhense**  
Recinto Multiusos de Termas de Monfortinho  
21h30

### IDANHA-A-NOVA PASSPORT

Ao visitar o concelho, poderá adquirir o Idanha-a-Nova Passport, que lhe permite aceder e conhecer de forma integrada todos os espaços da Rede Museológica.



### INFORMAÇÕES

Município de Idanha-a-Nova  
Largo do Município  
6260-303 Idanha-a-Nova  
Tel. 277 230 570  
Fax: 277 232 580  
Email: geral@cm-idanhaova.pt  
URL: www.idanha.pt

Cabinete de Turismo  
Município de Idanha-a-Nova  
Centro Cultural Basílio  
Av. Joaquim Morão  
6260-713 Idanha-a-Nova  
Tel. 277 232 500  
Email: turismo@cm-idanhaova.pt

A programação poderá sofrer alterações



## IMPACT OF GEOPARK IN MEDIA



**4**  
**SET.**  
**2019** | **GEOPARK**  
**NATURTEJO**

**Acompanhe a transmissão  
em direto na RTP 1  
desde Penha Garcia**



**CIÊNCIA VIVA**  
**NO VERÃO** **EM REDE**

**ACTIVIDADES EM TODO O PAÍS**  
**15 JULHO / 15 SETEMBRO**

**#cienciavivanoverao #cienciaviva**



# IMPACT OF GEOPARK IN MEDIA



## Visit Naturtejo Geopark in:



[www.geoparknaturtejo.com](http://www.geoparknaturtejo.com)



[www.facebook.com/geoparknaturtejo.mesetameridional](https://www.facebook.com/geoparknaturtejo.mesetameridional)



[www.instagram.com/geopark\\_naturtejo/](https://www.instagram.com/geopark_naturtejo/)



[www.youtube.com/geoparknaturtejo](https://www.youtube.com/geoparknaturtejo)

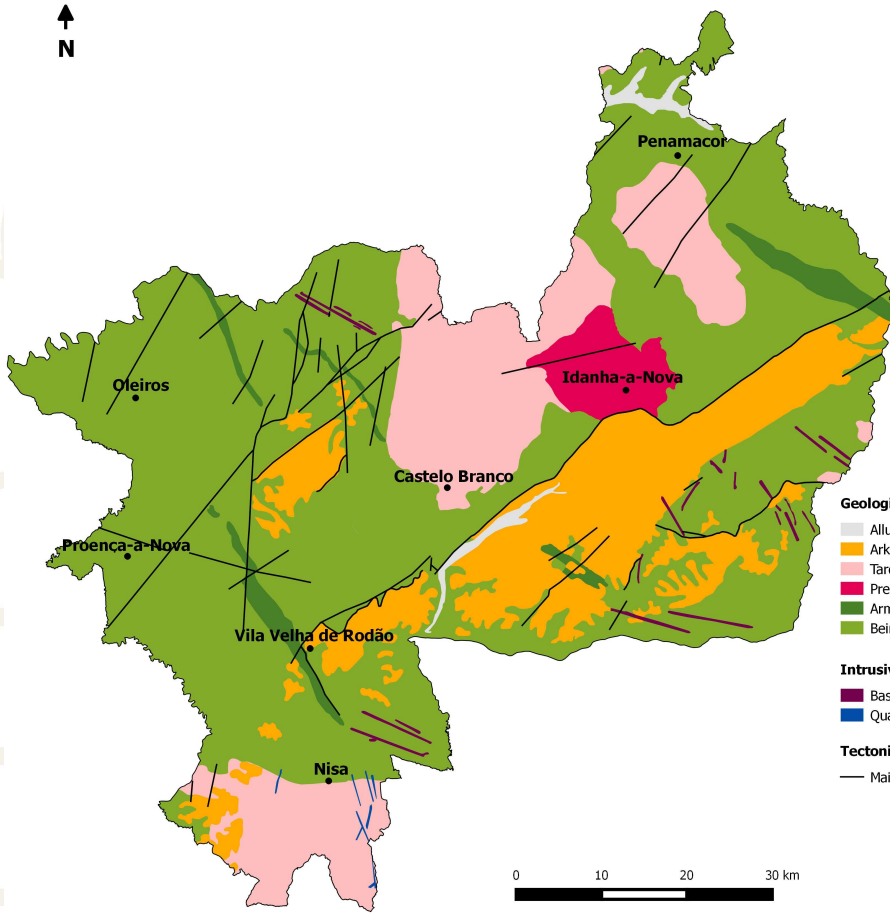


[issuu.com/geoparknaturtejo](https://issuu.com/geoparknaturtejo)



[www.slideshare.net/geoparknaturtejomesetameridional](https://www.slideshare.net/geoparknaturtejomesetameridional)





**Geological Formations (Ma-Million years)**

- Alluvium and fluvial terraces - Pliocene-Holocene (1Ma-present)
- Arkoses, breccias and conglomerates - Eocene-Pliocene (50-2.6Ma)
- Tardi-Variscan orogenic granites (315-300Ma)
- Pre-Variscan granodiorites (480-472Ma)
- Armorican Quartzite and schists - Ordovician-Lower Silurian (488-435Ma)
- Beiras Group (schists and greywackes) - Neoproterozoic (610-542Ma)

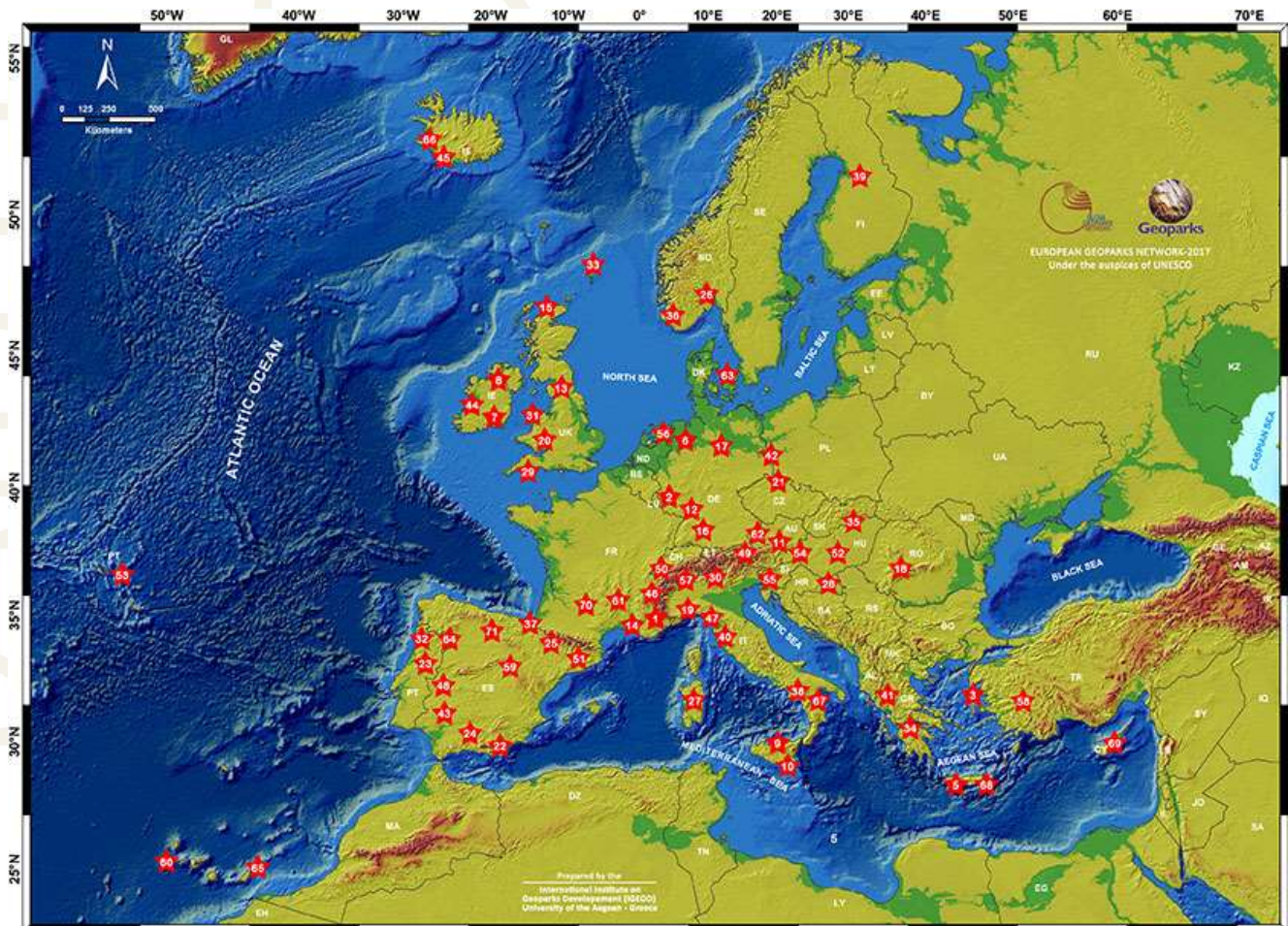
**Intrusive rocks**

- Basic rocks, aplites and pegmatites
- Quartz

**Tectonic**

- Main faults

## Geoparks: Geology with human face







Edition - Geopark Naturtejo, 2019  
Coordenação - Carlos Neto de Carvalho  
Texts - Carlos Neto de Carvalho, Joana Rodrigues,  
Municipality of Proença-a-Nova,  
Municipality of Idanha-a-Nova  
Photos - Joana Rodrigues, Carlos Neto de Carvalho,  
Municipality of Idanha-a-Nova,  
Living Science Forest Centre  
Clipping - Carla Jacinto e Alice Marcelo  
Design - Layer [Design and Print Studio]  
Translation - Carla Jacinto  
Editing - Joana Rodrigues



**CRUZIANA**

GEOPARK NATURTEJO DA MESETA MERIDIONAL-EUROPEAN AND GLOBAL GEOPARK MONTHLY REPORT

[www.geoparknaturtejo.com](http://www.geoparknaturtejo.com)