



In this issue:

7th Meeting of ESTEAM Project Partners in Idrija Geopark
Latin America Ambassadors in Oleiros
Tourism Members of CPLP Countries visit Monsanto
Geologist Day Celebrations
...and more!

CRUZIANA

NATURTEJO UNESCO GLOBAL GEOPARK - E-MAGAZINE

GEO-stories of our places and people: Pedrógão de S. Pedro

Pedrógão is visible from afar, a small, asymmetric granitic hill crowded of houses. Erected from the Castelo Branco platform only to let itself be seen, in a northern projection of the tardivariscan granite of Castelo Branco, in its contact developed intense hydrothermalism making the subsoil a wealth of ore. In this region, tungsten was exploited in Mata da Rainha during World War II, based in Pedrógão. Still nowadays, the abnormal values of gold at soil level, as well as other metals, attract the interest of specialists and mining companies. In a territory with 21.78 km² and less than 500 inhabitants the forest and agriculture are still the main activities. The village maintains an urban centre characteristic of the 16th century with contorted streets and alleys between granite houses that cobbled on the hillside of Pedrógão, as solar Morocco and the 17th century House of Theatre, monument of public interest. At the top there is the old Calvary. The human settlement dates back to the Neolithic with the presence of some megalithic constructions. The village is an excellent viewpoint on the stretches involving it and a starting point for mountain biking or hiking, for example until Torto River, along the rural paths that deserve to be marked and promoted. Its relation to the mines of Mata da Rainha made famous by Fernando Namora should not, however, be forgotten in a sought-after future that transforms those mines into the existential core of a cultural park.

Bibliography

- HENRIQUES, H.M.G. (2008) – Pedrógão de S. Pedro. História, Tradição e Arte. Ed. Colibri.
- NUNES, J.L. (1979) – Roteiro do concelho de Penamacor. Câmara Municipal de Penamacor.
- NUNES, J.L. (1988) – Novo roteiro do concelho de Penamacor. Câmara Municipal de Penamacor.
- SANTOS OLIVEIRA, J. M.; FARINHA, J. & CASTRO REIS, M. L. (2001) - Ouro e outros elementos traço em metassedimentos da área de Pedrógão (Penamacor, centro de Portugal). Estudos, Notas Trabalhos IGM, 43: 57-86.

The editor
Carlos Neto de Carvalho
Scientific coordinator
Geologist

Cover: (Projecto Objectiva: Geopark)



MONTHLY ACTIVITIES

1 and 2 June – Nature Sports Festival in Zebreira. With proposals tailored to the most adventurous and others to supporters of countryside tranquillity, there was no lack of activities at the 5th Nature Sports Festival. The village of Zebreira, in the Municipality of Idanha-a-Nova, in the middle of Naturtejo Geopark, received thousands visitors for two days of fun and leisure. "Zebreira is the starting point for numerous sports activities in nature, from observing the impressive biodiversity of International Tejo - UNESCO Biosphere Reserve - to horseback riding and biking, to cinegetic activity and to Equestrian competitions ", said at the inauguration of the event Armindo Jacinto, president of the Municipality of Idanha-a-Nova. The president added that the goal is promoting regional products and at the same time boost the local economy, creating wealth and employment. During the weekend there were tours for all audiences, adventure sports, equestrian and athletics competitions, street entertainment, concerts and the sonorities of Idanha-a-Nova, UNESCO Creative City of Music.

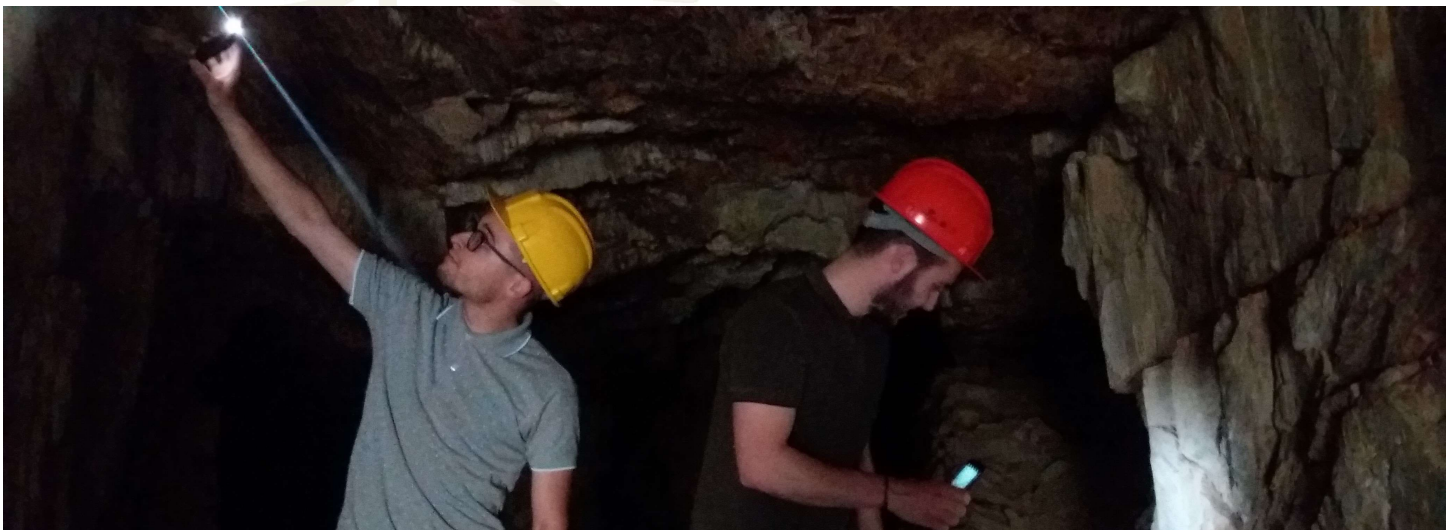


2 June – Thematic Visit on Roman Gold in Conchal do Arneiro. Within the framework of the Landscape Festival 2019, a thematic Visit was held to the Geomonument Conchal do Arneiro, supported by Monte Filipe Hotel, Naturtejo Geopark's partner. The small group faced high temperatures above 35°C to carry out almost 9 km of walking trail by one of the most relevant Roman mining complexes in Portugal. The visit began at the Interpretive Center of Conchal, with Carlos Neto de Carvalho as a guide.



2 June- Latin America Ambassadors visit Oleiros. Oleiros welcomed a group of Ambassadors from Latin America in Portugal, in collaboration with IPDAL-Institute for the Promotion of Latin America and the Caribbean, an organization that aims to strengthen relations between Portugal and Latin America. The delegation included ambassadors from Cuba, Mercedes Martinez Valdés, Uruguay, Brígida Scaffo, Paraguay, María José Argaña Mateu, Chile, Pedro Pablo Diaz, the Consul of the Argentine Embassy, Rodolfo Lucero, the Deputy Mission Chief of the Embassy of Peru, Carla Navarro and the President of IPDAL, Congressman Paulo Neves. The visit through the municipality allowed to know craftsmen, traditions, traditional music, endogenous products, gastronomy and various points of patrimonial interest, among which geosites of Naturtejo Geopark, such as the Viewpoints of Cabeço Mosqueiro and Zebro and also the Waterfall of Fraga da Água D'alta, a visit accompanied by the geologist Joana Rodrigues. For two days there was also a business forum and a formal hearing in the Municipality.

2 June - Intercultural Fair in Penamacor. The municipality of Penamacor currently has a large immigrant community from diverse countries. In a stimulus to bring resident communities together, the Municipality of Penamacor organised an intercultural fair. The Intercultural Fair of Penamacor aims to foster sharing and knowledge exchange at various levels: cultural, artistic, musical and gastronomic. The initiative is organized by the Municipality of Penamacor and the Associations The Hub and Lagartu Verdi. In the third edition of the Intercultural Fair of Penamacor, visitors could find various exhibitors with handicrafts, natural and regional products, old-age and antiques and creative apparel.



4 June - Students from the Superior School of Technology visit an ancient mine in Segura. Senior students of IT and Multimedia Technology at IPCB, Nuno Dias and Gabriel Rodriguez, visited an abandoned mine gallery, in Segura Mines, for which are developing an immersive virtual experience, guided by the Professor Pedro Silva. During this visit, accompanied by the geologist Joana Rodrigues, the aim was collecting detailed information in order to improve and refine the recreated environment, including light and sound sensations.



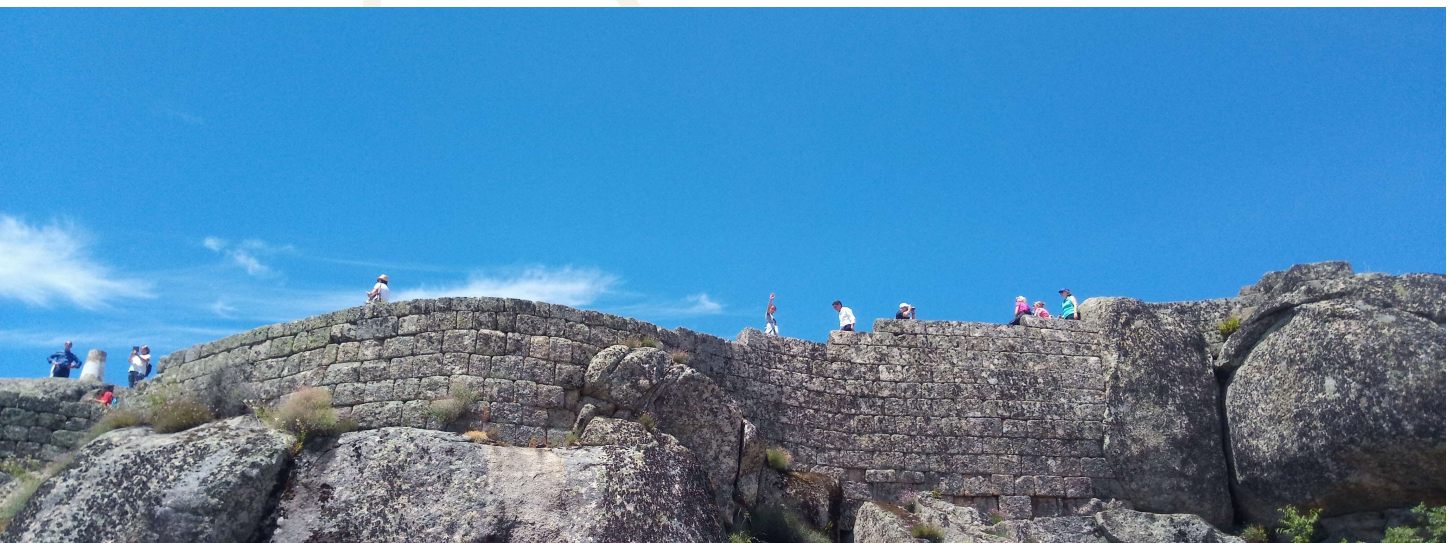
5 June - Tourism Program at Naturtejo Geopark. A group of 21 tourists brought by the travel agency Noventur travelled from Lisboa to Naturtejo Geopark, to discover the Historical Village of Idanha-a-Velha and the Ichnological Park of Penha Garcia. This program was accompanied by Susana Santos.



6 June - Tourism Representatives at CPLP visit Monsanto. Directors and technicians of the tourism sector of Portuguese-speaking countries were invited by Tourism of Portugal to know the tourism products of our country. From Brazil to African countries, the aim of this visit was to convey a deeper knowledge of the Portuguese tourist offer to important Portuguese-speaking markets. With a short passage by Naturtejo Geopark, Carlos Neto de Carvalho received the delegation organized by Tourism of Portugal, representing the Municipality of Idanha-a-Nova. At the Geo-Hotel in Monsanto, the scientific coordinator made an introduction to the UNESCO Geopark, its products and tourism resources. Jorge Costa then held a guided tour through the Historical Village.



7 June - Celebrations of Geologist Day. Within the framework of the Celebrations of Geologist Day 2019, Naturtejo Geopark, UNESCO Global Geopark and the Living Science Forest Centre, in Proença-a-Nova joined the day with the seal of approval of the Geological Society of Portugal. The Geologist Day was celebrated with a workshop "Minerals around us: Where do they come from? What are they for?" attended by 17 students in the 3rd and 4th grades and primary school from Sobreira Formosa, in Proença-a-Nova. At a time when mining is back on the agenda in Portugal and in the region, it was intended to raise awareness of the role of minerals in every day's life and for sustainable applications. Students discussed the use of mineral resources in their homes and school, carried out various activities and games with the geologist Joana Rodrigues and the monitor of the Living Science Forest Centre Marta Palhim.



8 June - "Mice" Route on the way to the harvest and the flavours of the harvesters. The Municipality of Proença-a-Nova held a walking trail in the village Vale da Mua, under the theme "Mice", local residents who travelled to Alentejo searching for work during the harvest period. Large dozens of participants had the chance to taste local gastronomy flavours.

8 and 9 June – 11th National Caravanning Meeting. In the context of the 11th National Caravanning Meeting, which took place in the campsite of Idanha-a-Nova, a group of 125 caravanners from all over the country visited the Historical Village of Idanha-a-Velha. This visit was accompanied by the guides Jorge Costa and José Antunes.

8 June – Tourist Program in Idanha-a-Nova. This weekend the Geopark welcomed a group of 52 people travelling with Beltour Travel Agency to visit the Historical Villages of Idanha-a-Velha and Monsanto as well as the Ichnological Park in Penha Garcia, guided by our partners at Geolife Tours.

9 June – Spike Festival in Estreito closes Landscape Festival 2019. A traditional outdoor picnic in the fields celebrates the Spike Festival in Estreito. Dozens of participants attended this celebration for a pleasant afternoon ending this way the celebrations of the European Geoparks Week – Landscape Festival of Naturtejo Geopark.



12 and 13 June – 7th Meeting of ESTEAM Project Partners in Idrija Geopark. The Tourism Council of Idrija hosted the 7th meeting of ESTEAM Project Partners, in Idrija Geopark, Slovenia. At this meeting, all 7 partners gathered to analyse all work done and plan activities to be implemented until the end of the project, in September 2019. Three years have passed since the first meeting. During this time, partners held several successful activities: partners meetings, implementation of products and development of promotional activities, teaching-learning activities and a multiplier/training event aimed to teachers who want to use the App TeachOUT. During regular meeting and over three years of intense cooperation, partners developed the App TechOUT, which enables teachers and educators to create games with several outdoor tasks for children/students. The teacher structures the game at the platform "CMS", defines challenges, questions and information. The game may be published online and next will be available at the App TeachOUT, so that students download it to their smartphone or tablet. The App based on GPS drives students between points through a preset trail. At the stopping points questions or information arise in their devices. This way, students learn different contents, explore the environment and discover several learning contents outdoor. The App TeachOUT is the main and most important result of the ESTEAM project, so possible improvements, corrections, tests and future use for this App were the main point discussed during the final meeting. Partners also discussed the end of the project and its last product – a user guide step by step. During this meeting, Idrija Geopark wanted to show all partners how interesting their Geopark is. The first day of the meeting was held in the beautiful Kendov dvorec and the second day on Hleviška planina Hut.

Foreign participants were able to observe some natural heritage places and landmarks – natural pool "Lajšt", natural pools named "Bu-ke" and different interpretation venues at Idrija Geopark. All partners were satisfied by the results and the well successful conclusion of the project, and all wish the new App doesn't end with the project. The meeting was concluded with the decision that partners will try to find ways and means to continue the work done during the ESTEAM project. All the information on the Project and the App are available at the website: www.esteemproject.eu. Maria Manuela Catana and Mariana Vilas Boas, from Naturtejo Geopark and Teachers André Azeiteiro and Elsa Cantinhas from the School Group of Idanha-a-Nova, represented Portuguese entities at this meeting.



19 June – 2nd Anniversary of the Pilot Project for Collaborative Management of International Tejo Natural Park.

The 2nd anniversary of the Pilot Project for the Collaborative Management of the International Tejo Natural Park was celebrated in Segura (Idanha-a-Nova) in the Interpretative Centre for Biodiversity, with the presence of the Minister of Environment and Energy Transition, João Matos Fernandes and the Secretary of State for Land Use Planning and Nature Conservation, Célia Ramos. A review of two years of work was carried out, with the presentation of the projects already implemented, notably with the inauguration of the circular route of the International Tejo and its information panels, as well as the delivery of a car keys destined for the Feeding System of Necrophagous Birds, an essential project to reconcile the management of cinegetic with the conservation of nature.

In the Interpretative Centre for Biodiversity the immersive system IMineLearn was tested, a virtual experience in a mining gallery of Segura, a tool produced by students Nuno Dias and Gabriel Rodriguez Senior of IT and Multimedia Technology, from the School of Technology of IPCB, guided by Professor Pedro Silva, in partnership with Naturtejo Geopark.

20 and 21 June – Traditional Medicines Conference in Penha Garcia. The 5th Traditional Medicines Conference was held in Penha Garcia under the themes health and food, ancestral knowledge and the forces of nature. The Congress, which took place in parallel with the 3rd Show of the Bread Cycle, was organized by the Municipality of Idanha-a-Nova and the village of Penha Garcia, in collaboration with local associations. The event took place in S. Pedro de Alcântara Museum, with the participation of specialists, as well as interested people from the territory who shared their knowledge with the public, in a meeting marked by a holistic view of nature, health and human being.



22 June – Cherry Workshop links two villages in Muradal Mountain by the International Appalachian Trail.

In the framework of the initiative "Ten parishes, Ten Experiences" in Oleiros, the "Cherry Workshop" was held, with a walking trail linking the villages of Sarnadas de S. Simão and Cardosa, by the Muradal Mountain, through some of the paths of the International Appalachian Trail. In this workshop, dedicated to the cherry, Inês Martins from Municipality of Oleiros addressed themes related to the fruit from the botanical and ecological point of view, its production, the cherry trees and its use in confectionery, liqueurs, etc. The trail also included a historical component, with emphasis on the Defensive Line Talhadas-Muradal, by Leonel Azevedo, who guided a visit to a battery with recreation of the French Invasions in Portelo. The geologist Joana Rodrigues framed the Muradal Mountain and highlighted its heritage value regarding the ancient environments it preserves and the testimonies of the evolution of the current Appalachian-type landscape. The lunch was dedicated to local gastronomy, with the traditional "Fresh Meat Feast", with cherry and tigelada pudding to finish the delicious meal.



25 and 26 June - Filming a documentary in Salvaterra do Extremo and Natural Monument Portas de Ródão.

The producer Real Ficção from Lisboa moved to Naturtejo Geopark for two days to run scenes for the documentary "In Alice's Country". The doc is based on a family trip on what Portugal is today, in which the summer holidays are used by a father to show the country he will bequeath to Alice. Carlos Neto de Carvalho accompanied the team on the trails of Salvaterra do Extremo to present the geomonument of Erges epigenic gorge. Images were made in the Tejo River, Malpica do Tejo and the Natural Monument Portas de Ródão.



27 and 28 June - Participation at the 10th Annual Meeting of the Guide of the Portuguese Geological and Mines Sites.

The Mining Route, which Naturtejo Geopark is part since its origin, currently integrates 38 locations nationwide, including the Interpretive Center of Borralha Mines, in Montalegre and the Tungsten Museum in Cerva, Ribeira de Pena, who welcomed the Annual Meeting.

The Meeting included a Conference on "Interior Valuation and Specificities in Territories of Geological and Mining Interest", opened by the Secretary of State for Interior Valuation, João Paulo Catarino, with specialists in the areas of Geological Resources, Territorial Development and Tourism. As usual three new partners have been presented which will integrate the Mining Route.

This year marks the 10th anniversary of the Mining Route with a session dedicated to New Goals and Challenges, where partners presented concrete examples of good practices regarding creative tourism, accessibility and new audiences, training, new financing tools to heritage regeneration and also new products. Bernardo Lemos, from the Mining Route, a central figure for the success of the project, reviewed these 10 years of activities, recalled the main stages and achievements, highlighting the way over time and naturally partners approached and starting network cooperation.

The Secretary of State for Energy-Environment and Energy Transition, João Galamba, the General Director of Energy and Geology, João Bernardo and EDM President Rui Rodrigues attended the meeting. At the closing session, the Secretary of State for Energy highlighted the relevance of the Mining Route and the activities developed in the last 10 years, as well as the importance of a new organisational framework, reflected in the document of Strategy Guidance, developed by the Working Group of Monfortinho, of which the Naturtejo

During his intervention, João Galamba addressed the subject of lithium prospecting, with enlightening explanations.

Partners also had the opportunity to visit the Tungsten Museum, in Cerva, the Mining Area of Adoria (Ribeira de Pena) and the Interpretive Center of Borralha Mines (Montalegre). Naturtejo Geopark was represented by Mariana Vilas Boas and Joana Rodrigues.



28 to 30 June – Naturtejo Geopark at the Fair Flavours of Tejo. Once again Naturtejo Geopark attended the Fair Flavours of Tejo, in Vila Velha de Ródão. Jorge Costa and Carla Jacinto boosted the stand during the event. During the opening ceremony the President of the Municipality of Vila Velha de Ródão, along with the Secretary of State for Forestry visited Geopark's promotional space. Also present at the event were the geoproducers Rodoliv and our new partner Trevo Extravagante, with his cheese, olive oil, olives, regional cakes, smoked sausages, honey and many other delicacies produced in Perais (Vila Velha de Ródão).

IMPACT OF GEOPARK IN MEDIA



Newspapers & www

June 2019 (Raiano) – Presentation of the App “TeachOUT – Science game outdoors” in Naturtejo Geopark

4 June (Diário Digital de Castelo Branco) – ESART presents “Landscape Museum: Landscape Exploration Guide”

12 June (Povo da Beira) - Latin America Ambassadors visit and meet in Oleiros

13 June (Reconquista) – Barrocal seen from my window

19 June (Povo da Beira) – Sarnadas de S. Simão host Cherry Workshop

26 June (Povo da Beira) – Ten Parishes, Ten Experiences – Cherry Workshop value the territory

26 June (Povo da Beira) – Minister of Environment is very satisfied with the management model of the International Tejo Natural Park

SCIENTIFIC CONTRIBUTIONS FOR THE GEO PARK AND THE GEOSCIENCES



- NETO DE CARVALHO, C., FIGUEIREDO, S., CUNHA, P.P. & BELO, J. – The sedimentary record of fossil elephants: the relevance of the Portuguese eolianite archive and its environmental and paleoclimatic information of the Last Glacial Maximum. In: Pena dos Reis, R., Henriques, M.H., Oosterbeek, L., Rosina, P., Alves, E.I., Garcia, G.G. & João, P. (eds.), International Meeting on Paleoclimate: changes and adaptations – book of abstracts. Area Domenuiu, 8, 105-106.

- FERNANDES, I., FREITAS, T.B., PRAZERES, R., NETO DE CARVALHO, C. & CALVÃO, J. – Characterization of the geological and geotechnical conditions at the village of Monsanto. E3S Web of Conferences 97, 03033 (2019), FORM-2019, <https://doi.org/10.1051/e3sconf/20199703033>

PROMOTION FOR THE GENERAL PUBLIC



Colaboração: **Interreg** España - Portugal REDTI, **Município de IDANHA-A-NOVA**, **Município de Moraleja**, **Centro Municipal Cultura e Desenvolvimento**

Organização: **XXIII FEIRA FERIA RAYANA RAIANA** 17 a 21 JUL 2019 IDANHA-A-NOVA *produtos da terra*

17 XUTOS E PONTAPÉS 18 MIGUEL ABRÁJO 19 UNP 20 ÁURIA 21 IDANHA.ROCK

EDIDANHA-A-NOVA BDO AGRICULTOR, International Network of European Regions, **MAR E ENTERRADA** (Associação de Agricultores e Empreendedores Locais), **GAIA** (Associação de Agricultores e Empreendedores Locais), **3000**, **MEIA**, **ecoeventos**

idanho.pt | feiraraiana.idanho.pt

FISAS
FÓRUM INTERNACIONAL TERRITÓRIOS RELEVANTES PARA SISTEMAS ALIMENTARES SUSTENTÁVEIS

17-21 . Jul . 2019
Idanha-a-Nova
PORTUGAL

V FÓRUM MUNDIAL DE INOVAÇÃO RURAL RURAL INNOVATION WORLD FORUM
SPAN 20º SEMINÁRIO INTERNACIONAL DO PATRIMÓNIO AGRÍCOLA, ALIMENTAR E DA PESQUISA: CASOS DE SUCESSO EM SISTEMAS ALIMENTARES SUSTENTÁVEIS, CAMINHOS PARA A COOPERAÇÃO
CONGRESSO INTERNACIONAL DAS RIO-REGIÕES
OPPE LOCAL: POLÍTICAS PÚBLICAS REGIONAIS PARA A SUSTENTABILIDADE ALIMENTAR

www.fisas.org

Comité Organizador: **INSTITUTO POLITÉCNICO DE VISEU**, **GRUP**, **Associação de Agricultores e Empreendedores Locais**, **Associação de Agricultores e Empreendedores Locais**, **aCtuar**, **naturtejo**, **Associação de Agricultores e Empreendedores Locais**

Patrocinadores: **COMUNIDADE AUTÓNOMA DA REGIÃO ALGARVE**, **MSC**, **FIDA**, **Associação de Agricultores e Empreendedores Locais**, **ABERTA**, **Associação de Agricultores e Empreendedores Locais**

Colaboradores: **INSTITUTO POLITÉCNICO DE VISEU**, **CENTRO**, **F2020**, **Associação de Agricultores e Empreendedores Locais**, **aCtuar**, **Associação de Agricultores e Empreendedores Locais**, **F2020**

XV FESTIVAL MELANCIA
26 A 28 . JULHO . 2019
LADOEIRO
IDANHA-A-NOVA

26 DE JULHO	27 DE JULHO	28 DE JULHO
19h00 Abertura oficial do Festival Provas de sumo, compotas e outras iguarias de melancia Workshop para crianças CURVA DA MELANCIA Huras artesanais Atividade de Rua MAURÍCIO MELFE	19h00 Abertura do Festival Live Cooking Melancia na Cozinha Moderna Chef Valdir Lubave Workshop para crianças Festa da Cultura da Melancia Huras artesanais Atividade de Rua HIGH FIVE FANÉSORA NEM FA NEM FUM Jogos de destreza com Melancia Atuação da artista CRISTINA ANDRISON 20h00 Atuação do grupo LUCAS & MATEUS 00h00 DJS DE VACACIONES	19h00 Abertura do Festival GRUPOS DE ZÉS PEREIRAS OS MADRILHAS Live Cooking Melancia Chef Valdir Lubave e Chef Jeff Workshop para crianças Festa da Cultura da Melancia Huras artesanais Atividade de Rua HIGH FIVE TARDDE DE MAGIA COM ZÉ MÁGICO GRUPO FEMININO GIRAFÓLES Jogos de destreza com Melancia 17h00 BAND DAS FESTAS DE SANTO ISIDRO Festeiros da Festa de Verão 19h00 BANCHO FOLCLÓRICO DA ACDL - LADOEIRO BANCHO FOLCLÓRICO BAIÁ DOS SONHOS BANCHO FOLCLÓRICO E ETNOGRÁFICO DO TRANCOSO 20h00 Atuação da Artista MICÉLA

ATIVIDADES EM PERMANÊNCIA: **FEIRA DE PRODUTOS REGIONAIS**, **FEIRA DE PRODUTOS REGIONAIS**, **FEIRA DE PRODUTOS REGIONAIS**, **FEIRA DE PRODUTOS REGIONAIS**, **FEIRA DE PRODUTOS REGIONAIS**

idanho.pt

CASA DAS CIÊNCIAS
EOLÓG - FUNDAÇÃO BELMIRO DE AZEVEDO

VI ENCONTRO INTERNACIONAL DA CASA DAS CIÊNCIAS

ENSINO DAS CIÊNCIAS E A SOCIEDADE MODERNA

10 a 12 JULHO 2019

LISBOA
FACULDADE DE CIÊNCIAS DA UNIVERSIDADE DE LISBOA

PROMOTION FOR THE GENERAL PUBLIC



**CIÊNCIA VIVA
NO VERÃO** **EM REDE**

ACTIVIDADES EM TODO O PAÍS
15 JULHO / 15 SETEMBRO

#cienciavivanoverao #cienciaviva

Visit Naturtejo Geopark in:



www.geoparknaturtejo.com



www.facebook.com/geoparknaturtejo.mesetameridional



www.instagram.com/geopark_naturtejo/



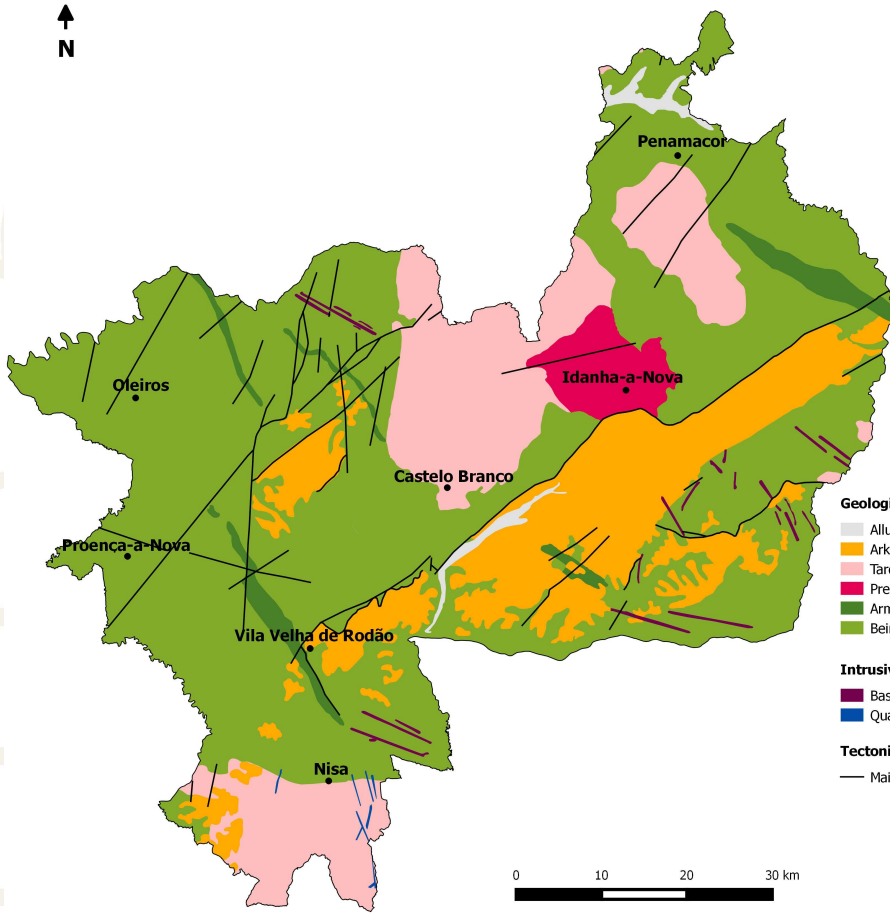
www.youtube.com/geoparknaturtejo



issuu.com/geoparknaturtejo



www.slideshare.net/geoparknaturtejomesetameridional



Geological Formations (Ma-Million years)

- Alluvium and fluvial terraces - Pliocene-Holocene (1Ma-present)
- Arkoses, breccias and conglomerates - Eocene-Pliocene (50-2.6Ma)
- Tardi-Variscan orogenic granites (315-300Ma)
- Pre-Variscan granodiorites (480-472Ma)
- Armorican Quartzite and schists - Ordovician-Lower Silurian (488-435Ma)
- Beiras Group (schists and greywackes) - Neoproterozoic (610-542Ma)

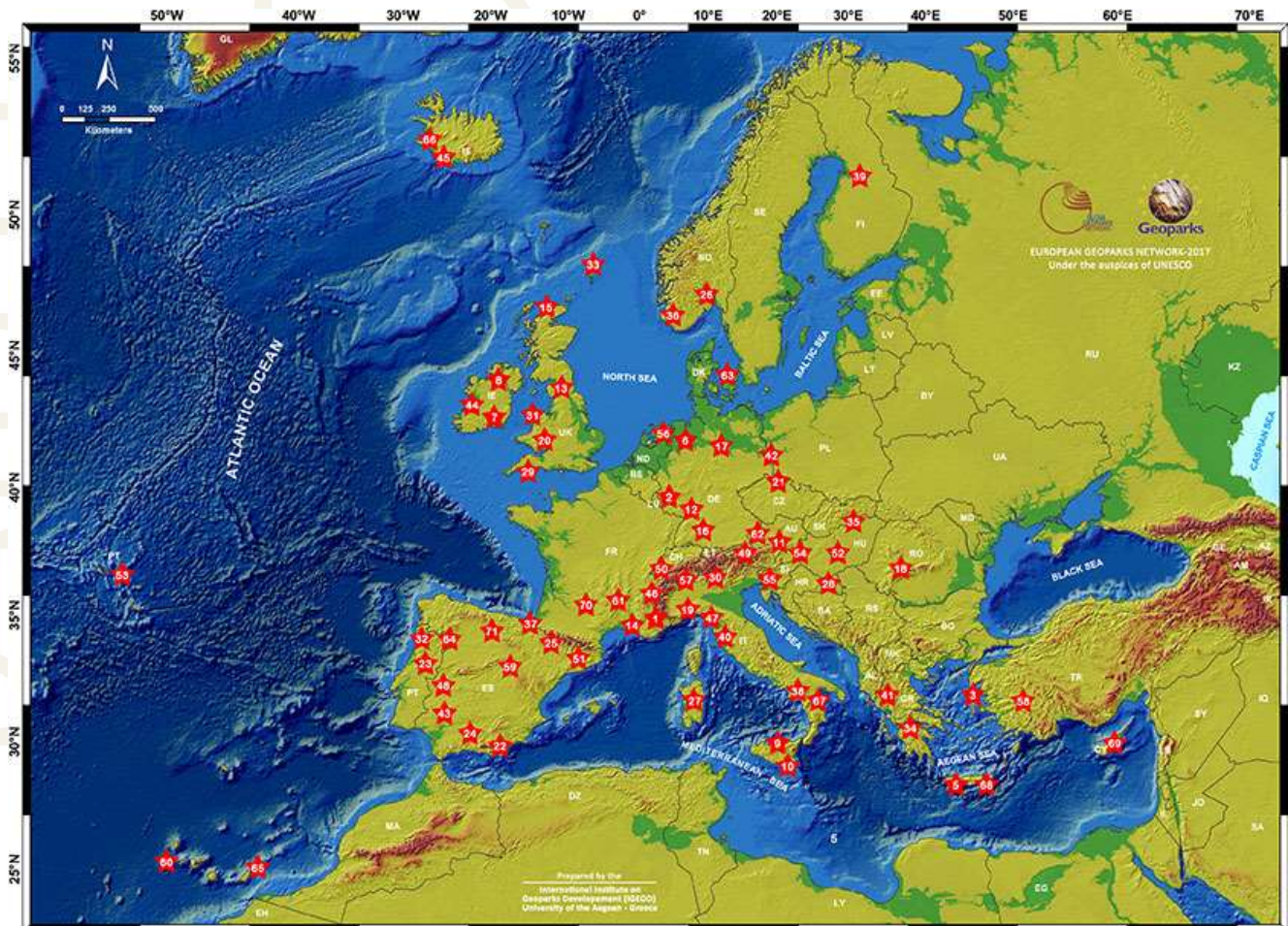
Intrusive rocks

- Basic rocks, aplites and pegmatites
- Quartz

Tectonic

- Main faults

Geoparks: Geology with human face





Edition - Geopark Naturtejo, 2019
Coordination - Carlos Neto de Carvalho
Texts - Carlos Neto de Carvalho, Joana Rodrigues,
Manuela Catana, Município de Idanha-a-Nova
Photos - Joana Rodrigues, Carlos Neto de
Carvalho, Manuela Catana, Município de
Idanha-a-Nova, Município de Vila Velha
de Ródão, Centro Ciência Viva da Floresta
Clipping - Carla Jacinto e Alice Marcelo
Translation - Carla Jacinto
Design - Layer [Design and Print Studio]
Editing - Joana Rodrigues



CRUZIANA

GEOPARK NATURTEJO DA MESETA MERIDIONAL-EUROPEAN AND GLOBAL GEOPARK MONTHLY REPORT

www.geoparknaturtejo.com