



In this issue:

Geological Heritage and Geoconservation Seminar present assessment of 20 years work in Portugal
Landscape Festival in Naturtejo Geopark: European Geoparks Week
Presentation of the Virtual Landscape Museum: Stories and Experiences
Presentation Workshop of the ESTEAM Project and the App TeachOUT for teachers in the region
...and more!

CRUZIANA

GEOPARK NATURTEJO DA MESETA MERIDIONAL - UNESCO GLOBAL GEOPARK - E-MAGAZINE



GEO-stories of our places and people: Benquerença

Benquerença lays in an extensively flat valley, between the mountains of Santa Marta and Opa, opened to Estrela. To the South, Santa Marta Mountain rises over 800 m above sea level. From the small chapel dedicated to the Saint (and the Mountain) the landscape extends along the Valley of Meimoa upstream, allowing deciphering a big abandoned river. Here Bazágueda grew up over thousands years, on the way to Zêzere River. But its capture by the hydrographic network of Erges River made Bazágueda follow a different course. In the extensive alluvial valley the small Meimoa stream runs today, irrigating with fertility this entire region. To the North rises the granitic Opa Mountain, crowned by a magnificent settlement from the Iron Age. Sortelha-a-Velha, with its great walled enclosure shows the full potential of an archaeological space deserving regional affirmation. The ore veins extending from this granite were once mining explored by Benquerença population. Near the village wells and galleries emerge from the floor of a pine forest reminding the tungsten rush days. In the Decade of 60's, a dredge from Gaia mines revolved the alluvial deposits searching for tin minerals, because the soil is not only fertile for agriculture. Benquerença arose in the medieval period of good relations between neighbours in this rich land. This village and the adjacent Quintas do Anascer host 575 inhabitants in an area of 28,68km². Largely this territory offers conditions for the production of olive, forestry and livestock. But the region also offers a touristic potential still unexploited. Surely the village hosts some events as the Rock Festival, in the beautiful fluvial beach "O Moinho", at Meimoa Stream bank. But Opa Mountain has great potential for Nature sports, as MTB, Orienteering and Paragliding. A walking trail could connect the village to Quintas do Anascer and to the top of the mountain, allowing to discover history in the fantastic landscape of Sortelha-a-Velha. The excavation of this proto-historic settlement could attract attentions to Benquerença, allowing thematic events as a Festival dedicated to Iron Age and international youth camps. A large valley between two small mountains: Benquerença is still a land of wide fertility to bloom.

Bibliography

- ELVAS; F.M.R. (2008) – Benquerença – Monografia. 177 pp.
- NABAIS, J. (coord.) 2016. Carta Arqueológica de Penamacor. Exposição. Câmara Municipal de Penamacor, 73 pp.
- NUNES, J.L. (1979) – Roteiro do concelho de Penamacor. Câmara Municipal de Penamacor.
- NUNES, J.L. (1988) – Novo roteiro do concelho de Penamacor. Câmara Municipal de Penamacor.
- VILAS BOAS, M., NETO DE CARVALHO, C., RODRIGUES, J.C. & VALENTE, A. (2015) – Património Geológico de Penamacor: inventário de Geossítios e propostas para a sua valorização. Açafa Online 10, 23-72.

The editor
Carlos Neto de Carvalho
Scientific coordinator
Geologist

Cover: (Projecto Objectiva: Geopark)



MONTHLY ACTIVITIES



1 May - Journalists of National Geographic Traveller visit Naturtejo Geopark. Naturtejo Geopark hosted, through the Regional Agency for Tourism Promotion for Centre of Portugal, journalists of National Geographic Traveller from Russia accompanied by Susana Santos.



2 and 3 May - Geological Heritage and Geoconservation Seminar present assessment of 20 years of work in Portugal. On the 20th anniversary of the first Seminar on Portuguese Geological Heritage, the University of Minho organized the Geological Heritage and Geoconservation Seminar, with Naturtejo Geopark among several partners. The aim was to make an assessment on geoconservation development in Portugal over the last two decades as well as identify challenges for the future, through discussion on geological heritage and geoconservation in debate sessions and round tables presented by participants. Naturtejo Geopark participated in the debate on Geoparks, through the Scientific Coordinator Carlos Neto de Carvalho. This investigator also participated in the presentation of 5 papers connected to the themes and taking place all over the country in partnerships. Naturtejo Geopark was also represented by Joana Rodrigues, presenting geological heritage inventory in Naturtejo Geopark, and Manuela Catana.

4 and 5 May – Divine Holy Cross in Monsanto. During the weekend, the Divine Holy Cross Festival, in the historical village of Monsanto, was a success with thousands of visitors travelling in time to the medieval period. The “Most Portuguese Village”, in the Municipality of Idanha-a-Nova, is the perfect set for a medieval recreation. “During two days, we tell the story of Monsanto, starting from its templar roots. We show that it is possible to combine medieval times recreations with the uses, customs and traditions that still characterize the Historical Village of Monsanto today”, said Armindo Jacinto, president of the Municipality of Idanha-a-Nova.

Therefore, one of the most appreciated moments is the staging of the Castle Legend, a party to homage the historic resistance of the people to the fortress siege, with the participation of the local population.

In a time when Monsanto enjoys great international prestige, the Medieval Fair was again a winning bet as a touristic and cultural advertisement inviting visitors from all over the world to join the party, through various historic animations.

“One more Divine Holy Cross, one more crowd”, said the President of the Parish Union of Monsanto and Idanha-a-Velha. Paulo Monteiro highlights that Monsanto “has unique characteristics to host a medieval fair”, with its Castle, Boulders and granite buildings providing the perfect atmosphere.

Music and dance, parades, weapons competitions and many other moments brought joy to Monsanto. From morning till evening, the village mystique and the animation program provided memorable moments.

5 May – Thematic visit discuss elephants extinction in Portugal. The Municipality of Odemira held a thematic visit for 40 participants under the theme of footprints left by the last elephants in Europe. Carlos Neto de Carvalho guided this visit along the beach and the cliffs of Malhão, jointly with the Geographer João Belo, responsible for the discovery of elephant footprints tracks in the region, and presently coordinating a multidisciplinary team studying the Ichnological record of the Pleistocene formations in the Southwest Alentejo.

8 May – Meeting of the Crossborder Biosphere Reserve Tejo/Tajo. The Intermunicipal Community of Beira Baixa, in Castelo Branco hosted the 2nd Working Group Tourism and Heritage Meeting - Transborder Biosphere Reserve Tejo/Tajo. The group discussed on proposals for activities to value this classified territory, to carry out in 2020 within the framework of Tourism and Heritage of the project “Living Territories”. Naturtejo Geopark was represented by Carlos Neto de Carvalho and Joana Rodrigues.



10 May – Final stage on the Educational Project Anim'a Rocha “Know your Geopark”. During the School year 2018/2019 the Educational Team for 7th grade in the School Group José Silvestre Ribeiro in Idanha-a-Nova organized an annual project developed in close partnership with Naturtejo Geopark, entitled “Know your Geopark”. It aimed to know a geosite in the Geopark with its different heritage strands. The “Natural Monument of Portas de Ródão” was the chosen one, at Vila Velha de Ródão. This project involved two stages; the first consisted in the characterization of interest points of the geosite, done in the classroom together with teachers connecting with other subjects; the final stage was a field trip to the studied geosite where students presented the studied sites. The field trip included stops in the Rock Art Interpretation Centre of Tejo, the Viewpoint in King Wamba's Castle and the river pier, where students enjoyed a boat trip through the Natural Monument. For this field trip students were divided in groups and presented to their colleagues what they learned on geography, histories and legends, geology, flora, fauna, water, gastronomy and leisure. This activity was supported by Manuela Catana, from Naturtejo Geopark, and the logistics by the Municipality of Idanha-a-Nova and Municipal Centre for Culture and Development (CMCD) in Idanha-a-Nova. This project resulted in a portfolio with all the information researched by students during the school year with illustrations created by students with the most emblematic species of fauna and flora in the studied area.



11 May – Presentation Workshop of the ESTEAM Project and the App TeachOUT for teachers in the region. The workshop took place in Monsanto, the theoretical part in the Tourism Office and the practical in the Boulders Trail. This trail was selected to test and build the game in Portugal. This second workshop was supported by the Municipality of Idanha-a-Nova and was credited as short term teachers course through the Training Centre of Alto Tejo Schools Association. Under the theme “New technologies, new methods: Presentation of the App TeachOUT”, the workshop was attended by 43 teachers from several municipalities on the Geopark and surrounding area, from kindergarten to universities. The first morning session was dedicated to the presentation of the ESTEAM Project, and the second to present the main product resulting from the project, the “App TeachOUT” and its potential as educational resource to be used at multidisciplinary outdoor classes. During the afternoon participants tested the App TeachOut in the field, mainly in the Boulders Trail, a walking trail in the geomonument “Inselberg of Monsanto”. During the game, teachers solved several challenges connected to geology, biology and historical-cultural subjects. The challenges included several teaching methods and outdoor activities based on a previous research conducted among students and teachers from Norway, Slovenia and Portugal (participating countries in the project) on learning/teaching methods and expectations. The event was very welcomed by teachers showing great interest. The last product will be a step by step guide on the ESTEAM Methods for teachers with instructions and information on how to use the games and to create different games for their students with the App TeachOUT, available at the end of the project, August 2019, on the website: www.esteamproject.eu.

The teachers André Azeiteiro and Elsa Cantinhas and Naturtejo Geopark's Technicians Mariana Vilas Boas and Manuela Catana boosted the workshop, supported by Joana Rodrigues and Carla Jacinto.



11 and 12 May – Soup Festival in Proença-a-Velha. On Sunday, at Quinta da Nora, in the Centre of Proença-a-Velha, thousands of visitors could taste and vote on the soups in contest. The Soup Contest is applied by restaurants, institutions and other talents in the region. After the contest, visitors enjoyed music performed by traditional groups. On Saturday this festival was preceded by the Accordionists and Concertina Players Meeting, with a dozen groups for an entertaining afternoon. To whet the appetite for the next day, the organization cooked the People's Soup and distributed it by all visitors.

The 17th Soup Festival and the 17th Accordionists and Concertina Players Meeting are organized by the Municipality of Idanha-a-Nova and the Parish of Proença-a-Velha, supported by Naturtejo Geopark.



14 and 15 May - Participation on the 8th National Committee for “Man & the Biosphere” (MaB) Meeting at the Crossborder Biosphere Reserve Tejo/Tajo International. Naturtejo Geopark, as member of the Advisory Council for the Cross border Biosphere Reserve Tejo/Tajo International, participated on the visit of the National Committee for the UNESCO Program Man & Biosphere (MaB), and also attended by 11 Portuguese Biosphere Reserves, as well as the Secretary of State for Education on Nature Preservation and Regional Planning, Célia Ramos, the President of ICNF, Rogério Rodrigues and the Mayor of Castelo Branco. During the meeting a cooperation protocol for development of the project Promoting Development of Biosphere Reserves Territories, as living sustainable territories was signed, financed by the EEA financial mechanism (MFEE – EEA Grants) and the Environmental Fund. The visit included a boat trip along Tejo, starting in Lentiscais, a visit to Herdade da Cubeira in Rosmaninhal and to Living Seeds Company, in Herdade do Couto da Várzea, in Idanha-a-Nova. Naturtejo Geopark was represented by Joana Rodrigues and Manuela Catana.

20 May - General Meeting of Naturtejo. The Intermunicipal Meeting of Naturtejo, involving the municipalities and private associates, took place at the Secretary of State for Interior Valorisation in Castelo Branco. This is definitely the best place to discuss the future of Naturtejo Geopark. This meeting also served to discuss the important moment of revalidation of UNESCO designation, which will take place next July.



21 and 22 May - See Portugal Forum in Castelo Branco. Cineteatro Avenida in Castelo Branco hosted the 6th edition of Domestic Tourism Forum “See Portugal”, promoted by Tourism of Centre, with more than 420 participants and about 40 speakers. Naturtejo Geopark attended with a promotional stand, where many seek information about the territory, tourism products and UNESCO Global Geoparks. During the event visitors tested the immersive system IMineLearn, a virtual experience in a mine, produced by senior students on Information Technology and Multimedia, Nuno Dias and Gabriel Rodriguez, guided by the teacher Pedro Silva from the Superior School of Technology of IPCB, in partnership with Naturtejo Geopark. Naturtejo Geopark was represented by Carla Jacinto, Alice Marcelo and Joana Rodrigues.

22 May to 10 June - Landscape Festival in Naturtejo Geopark: European Geoparks Week. The Landscape Festival is an iNature initiative by Naturtejo Geopark – UNESCO Global Geopark, its municipalities and partners, aiming to promote nature and its products to a growing number of tourists. Within the framework of the annual celebration of the European Geoparks Week, Naturtejo Geopark's territory offers some of the best moments, between 22nd May and 10th June, with a program filled by nature and culture.

The program starts tomorrow with BioDivSummit, a big conference on biodiversity and sustainability organized by the Municipality of Proença-a-Nova, in the Living Science Forest Centre. Tomorrow and the day after Penha Garcia and Monsanto host educational activities organized by Naturtejo Geopark and the Municipality of Idanha-a-Nova. The 23rd is the date for the presentation of the Virtual Landscape Museum, an initiative by the Superior School for Arts, IPCB in Castelo Branco which includes an interpretative visit to the Natural Monument Portas de Ródão.

During the weekend we have the Flower Festival in Aldeia de Santa Margarida, in Idanha-a-Nova, and the Cherry and Lemon Festival in Montes da Senhora, Proença-a-Nova, both visited by thousands. Still in the botanic theme, the Workshop of Laurissilva Forest, in the ancient wood of Fraga da Água d'Alta in Orvalho, another joint initiative with the Municipality of Oleiros.

The 31st marks a seminar at the Superior School for Arts, IPCB, within the scope of Ordo Christi Project – Artistic Heritage of the Order of Christ between Zêzere and Tejo. The same day marks one of the biggest events in Castelo Branco, Irresistible Flavours dedicated to the best gastronomy and local products. This flavours festival will cover two weekends this year. In the mean while, the 1st June marks the beginning of the Sports Festival in Zebreira, a joint organization between the Municipality of Idanha-a-Nova and the Parish of Zebreira showing the treasures of the Crossborder Biosphere Reserve Tejo/Tajo. On the 2nd June Naturtejo Geopark supported by Monte Filipe Hotel & Spa organize a thematic walking trail to the ancient roman gold mine in Conhal do Arneiro, in the Natural Monument Portas de Ródão. On the same day, the Municipality of Penamacor celebrates interculturality in its lands with a fair of meetings and local products. Vila Velha de Ródão hosts a Staged Route Lands with History.

For the last week of the Landscape Festival we propose the discovery of the mineral world at the Living Science Forest Centre with Naturtejo Geopark. Vale da Mua, in Proença-a-Nova hosts on the 8th June the 'Mice' Route on the Way to the Mowing and Mowing Flavours evoking the seasonal migrations of people searching for work at southerly latitudes. Estreito, in Oleiros hosts the Spike Festival in a joint organization between the Parish and the Municipality of Oleiros.

The European Geoparks Week occurs simultaneously in 74 UNESCO territories spread by Europe and is a celebration of local communities as well as their sustainable culture which makes classified territories as Geoparks examples of living territories for a planet with a future.

22 to 23 May – BioDivSummit Conference: species origin and biodiversity – is Bio-Humanity the new model for the 21st century?. Thought centuries, inhabitants of the municipality of Proença-a-Nova carved out the Earth's resources they need for their everyday life. Currently, even under new clothes, the forest continues to be the common denominator for the set of value-added activities that provide, as nature tourism, extraction of essential oils, wood, mycology, and water retention, construction of the landscape or carbon sequestration. The urge to preserve existent biological diversity should lead to the creation of laws including the value to pay for forest and its biodiversity maintenance, acknowledging its impact on the collective well being and representing an important source of income to its guardians. To reflect on these and other themes, the Municipality of Proença-a-Nova promoted on the International Biodiversity Day the BiodivSummit, a conference focused on the biological diversity at the Living Science Forest Centre, a place which has sought to promote all resources of the forest.

22 May – Field Trip C “Fossils of Penha Garcia and Boulders of Monsanto”. This nature class was attended by 29 11th grade students with 3 teachers from the Secondary School of Sé, in Guarda, within the framework of Biology and Geology subjects. The instructor for this activity was Rita Ferreira.

23 May – Field Trip A “In the Fossils Trail of Penha Garcia searching for Trilobites traces”. This activity was attended by 66 12th grade Students and 6 teachers from the School Group of Crato within the framework of Biology subject. Students were able to observe in situ many of the themes discussed in the classroom, specially the Cruziana ichnofossils. The instructors for this activity were the geologists Rita Ferreira and João Gerales.



23 May - Presentation of the Virtual Landscape Museum: Stories and Experiences of the Place. The Landscape Museum, a project by the Polytechnic Institute of Lisboa, Santarém and Castelo Branco, aims to help us read the landscape and create a legacy of knowledge and landscape literacy. The first key place is Tejo. The museum – based online – is opened with three exhibitions, all dedicated to Tejo territory: “Sounds and Landscape Materials”, “Word Maps” and “What is in this place?”. The first exhibition is an interactive experience in which we can “visit” different places in Tejo basin, based on photos and resident birds singing. Thus, we can hear birds like the blue rock thrush, the Bonelli’s Eagle, the Crow, the barn swallow, the Chickadee and the little owl. The images belong to the photographer Duarte Belo and the birds sounds have been collected by the musician and sound technician Magnus Robb. In the second exhibition we can choose various routes, passing by places such as the spring of Zêzere (Manteigas), Salvaterra do Extremo (Idanha-a-Nova) or Gardunha Mountain (Castelo Branco), these two located in Naturtejo Geopark.

“What is in this place?” is dedicated to the youngest. The exhibition is a guide to explore and awakens the “curiosity, charm, care and responsibility for the landscape”, with texts by Maria Manuel Pedrosa and illustrations by Joana Estrela. To help the public discover the landscape, the Museum has multimedia content and two printed guides to guide the visitor through reading and experience places. This museum began to be thought in 2015 by a group of teachers of the Superior School of Social Communication in Polytechnic Institute of Lisboa, having as partners the Polytechnics Institutes of Santarém and Castelo Branco and the company STRYX. Today, its team – composed by researchers, scholars and students – has the mission to “create a dynamic legacy with permanent access preserving knowledge and literacy on the landscape”. This archive might, over time, explain the Portuguese landscape transformations. The main goal is “actively contribute to the construction of a landscape citizenship awakening a critical and participative sense”. “The Landscape Museum is based online, but it is not a virtual museum. The records and landscape reading presented here do not override their real corresponding. We want our visitors to contact the real, crossing the landscape, feel it, explore it and live in it. The contents one can find in this museum are always complementary to its visit”. The Museum was developed between October 2017 and April 2019, within the scope of the investigation project “Narratives and experience of place: foundations for a Landscape Museum”, financed by European Structural Funds and Investment (FEEI), Operational Programme for Competitiveness and Internationalisation and the Regional Operational Programme of Lisboa, and by the State Budget, through the Science and Technology Foundation (FCT). Since April 2019, the Landscape Museum constitutes as a Scientific and Cultural non-profit Association, based in the Superior School of Social Communication in Polytechnic Institute of Lisboa.

Within the framework of the Landscape Festival 2019 – European Geoparks Week, the Landscape Museum was presented in the Superior School for Arts in Castelo Branco. Carlos Neto de Carvalho was invited to talk about geological Landscapes as a chance to value the territory of UNESCO Naturtejo Geopark. After a lunch on board the boat that crosses the Natural Monument Portas de Ródão, guests had the opportunity to discover this Geomonument with this geologist.



24 to 26 May – Flower Festival in Aldeia de Santa Margarida. Aldeia de Santa Margarida, in Idanha-a-Nova, covered with natural and paper flowers to host the 7th Flower Festival. The event welcomed thousands visitors – Portuguese and many Spanish – surrendered to the colourful and entertaining world. “Inhabitants of Aldeia de Santa Margarida deserve special salute for their work around the Flower Festival, getting better each year thanks to their unbeatable creativity, love and dedication to their land”, said Armindo Jacinto, president of the Municipality of Idanha-a-Nova. Indeed, although the Flower Festival covered three days, the thousands of flowers exhibit correspond to months of work by locals. These remarkable dedication and kindness deserve the biggest recognition by organizing entities, Municipality of Idanha-a-Nova and Parish of Aldeia de Santa Margarida.

According to Armindo Jacinto, the “Flower Festival is an example on how the thematic events we organize in the different parishes are an added value to the municipality of Idanha, which has grown in young population, as indicators as schools openings reflect”.

The mayor of Idanha-a-Nova assures that “these events create flow and promotion channels for our entrepreneurs, stimulate the local economy, encourage restaurants and hotels and create jobs, and even so, today we have to import people to work in the municipality.

The president of the Parish of Aldeia de Santa Margarida, Zélia Leitão, explains the secret to success “lays in the months of dedication, involving all the community who passionately create beauty and surprising decorations, but also the support of the Municipality of Idanha-a-Nova decisive to make this a wonderful and excitement festival”.



25 May - Workshop Laurissilva Forest in Orvalho. Orvalho hosted the Workshop “Laurissilva Forest”, an initiative Ten Parishes, Ten Experiences, attended by around 100 people. The activity included a visit to APROLISE, working as arts and crafts centre, where Inês Martins, from the Municipality of Oleiros, explained the linen cycle. The professor Carlos Pinto Gomes, from University of Évora, highlighted the more significant species of plants in Fragosas Valey, emphasising the importance of the ancient wood, living testimony of Continental Laurissilva Forest. The geologist Joana Rodrigues addressed the geological history of Oleiros Mountains and the formation of the geomonument Fraga da Água d'Alta Whaterfall. The workshop was boosted by Drums of GAIO (Group of Unconditional Friends of Orvalho), responsible for several local customs and traditions staging. The workshop ended with a Portuguese lunch in Cabeço do Mosqueiro Viewpoint.

25 and 26 May – Cherry and Lemon Festival in Montes da Senhora. Cherry and Lemon were the motto for a festival in Montes da Senhora, Proença-a-Nova, full of “quality products, entertainment, sports, gastronomy and folklore”, organized by Friends of Montes da Senhora League, the Social, Cultural and Recreation Centre of Montes da Senhora, the Municipality of Proença-a-Nova and the Parish of Montes da Senhora. Representing the Parish, the President Carlos Gonçalves, member of the Cherry Brotherhood said “this is an attempt to promote further our product, and if it can't compete in volume it can do it in advance and quality”.



29 May – University of Minho visits the Ichnological Park of Penha Garcia. 25 students from University of Minho and 4 teachers visited the paleontological site of Penha Garcia. These students, seniors of Geology and Teaching Biology and Geology degree, explored the stratigraphy and regional geology in Ponsul Valey, guided by the geologist Joana Rodrigues.

31 May – Ordo Christi Seminar at Superior School for Arts in Castelo Branco. Within the Framework of the Scientific Research and Technological Development Project Ordo Christi – Artistic Heritage of the Order of Christ between Zêzere and Tejo (15th and 16th centuries), the Superior School for Arts of IPCB hosted the 3rd Seminar “From Zêzere to Tejo: Marks of Artistic Heritage”. Preliminary results of the research show the importance of the Order of Christ in the region, with several historic and artistic manifestations which can be explored through the vast heritage associated to the Honours between Tejo and Zêzere Rivers. Joana Rodrigues presented the territory and the landscape between Zêzere and Tejo.

31 May – Fam Trip for the Tour operator Azul Viagens. Following the strategy developed by Tourism of Portugal for the Brazilian market, Naturtejo Geopark's collaboration was requested for a guided tour on the Historic Village of Monsanto with the tour operator Azul Viagens from Brazil. This visit was accompanied by Jorge Costa.



31 May to 2 June, 7 to 10 June – Irresistible Flavours in Castelo Branco. The civic centre of Castelo Branco hosted the Festival “Irresistible Flavours”. This year the festival will cover two weekends. A bet due to the successful event last year as the President of the municipality highlighted. “Due to the success of this event last year we considered important to extend the Festival. We did an assessment on the investment made in the structure of the festival and we believe it could become more cost-effective. On other hand we received requests by exhibitors to extend the festival for two weekends in a row and that is what will happen”. According to Luís Correia, in addition to the cultural bet the event will have other updates “apart from the music program, we will also bet on environment and sustainability level, ensuring the plastic use on this festival is practically null”. This is the showcase for local products from Castelo Branco, a privileged spot in the heart of the city.

IMPACT OF GEOPARK IN MEDIA



TV & Radio

22 May (Rádio Castelo Branco) – Landscape Festival celebrates the European Geoparks Week

23 May (Beira Baixa TV) – Naturtejo Geopark presented mobile App of Science in Nature Game

24 May (Rádio Castelo Branco) – Naturtejo Geopark presented mobile App of Science in Nature Game

29 May (Radio Condestável) – Orvalho preserves important Continental Laurissilva repository

Newspapers & www

May (Guide of the Portuguese Geological and Mines Sites) – Landscape Festival 2019

May (Sapo Viagens) – Landscape Festival celebrate European Geoparks Week

22 May (Portal de Nisa) – Landscape Festival 2019

23 May (Diário Digital de Castelo Branco) – Naturtejo Geopark presents App “TeachOUT” and game of Science in Nature

24 May (Gazeta Rural) – Landscape Festival celebrates European Geoparks Week

29 (Gazeta do Interior) – Orvalho preserve important Continental Laurissilva repository

30 May (Reconquista) – Activity involved one hundred people – Orvalho has unique forest

SCIENTIFIC CONTRIBUTIONS FOR THE GEOPARK AND THE GEOSCIENCES



- NETO DE CARVALHO, C., FIGUEIREDO, S., BELO, J., ANACLETO, J., COSTA, R.C. & CUNHA, P.P. – Sítios com pegadas de vertebrados em eolianitos pliocénicos portugueses e a sua valorização como património geológico. Jornadas de Património Geológico e Geoconservação, Univ. Minho, 2-3 Maio, 7-8.

- NETO DE CARVALHO, C., MERGULHÃO, L., MACHADO, S., PEREIRA, B., PAREDES, R., ANACLETO, J.M., BELO, J., PEREIRA, P. & CARVALHO, J. – O trabalho científico e a valorização do Sítio Paleontológico do Cabeço da Ladeira (Porto de Mós, Parque Natural das Serras de Aire e Candeeiros). Jornadas de Património Geológico e Geoconservação, Univ. Minho, 2-3 Maio, 9.

- PAREDES, R. & NETO DE CARVALHO, C. – A “Pedra Curiosa” da Livraria do Mondego: Geoconservação ex situ no Museu da Ciência da Universidade de Coimbra. Jornadas de Património Geológico e Geoconservação, Univ. Minho, 2-3 Maio, 11.

- VALÉRIO, M., FIGUEIREDO, M., COUTO, H. & NETO DE CARVALHO, C. – O “Museu das Trilobites” (Canelas-Arouca): 30 anos de investigação e de divulgação de um património paleontológico excepcional. Jornadas de Património Geológico e Geoconservação, Univ. Minho, 2-3 Maio, 12-13.

- RODRIGUES, J. & NETO DE CARVALHO, C. – O Inventário do Património Geológico e Geomineiro do Geopark Naturtejo (Beira Baixa/Alto Alentejo). Jornadas de Património Geológico e Geoconservação, Univ. Minho, 2-3 Maio, 18.

PROMOTION FOR THE GENERAL PUBLIC



exposição exhibition

A FLORESTA QUE NOS UNE

united by the forest

GRUTAS DA MOEDA

SÃO MAMEDE

JULHO ABRIL

july april

10 Freguesias. Experiências

22 DE JUNHO '19

ATELIÉ DA CEREJA

Freguesia de Sernadas São Simão

- » Passeio Pedestre com Interpretações «
com investigador Samuel Almeida e pela guião Inês de Castro Rodrigues
- » Recreação Histórica 'As Invasões Francesas' «
na companhia de Inês VIVARTE
- » Almoço - 10€ «

Inscrições até ao dia 14 de Junho
Na casa da Cultura de Sernadas São Simão

FESTIVAL DE DESPORTO NA NATUREZA

1 / 2 . JUNHO . 2019

ZEBREIRA
IDANHA-A-NOVA

1 DE JUNHO	2 DE JUNHO
13:00 Abertura do Festival	08:00 Passeio Escuro de Noite
14:00 Animação Musical TOXEVANUAR	09:00 Apresentação Musical de Natureza Viva Temática
15:00 Festival Hípico Internacional	10:00 Inauguração do Museu do Território
16:00 Concurso de saltos	11:00 Bateria de Alentejo do Município de Zebreira
16:00 Início da Feira de Produtos Regionais	12:00 Abertura do Festival
17:30 Apresentação de Escudo pelo Campesão Nacional Álvaro Silva	13:00 Animação Musical GRUPO DE BOMBOS SOUTO DA CASA
18:00 Apresentação de Vídeos Interativos Paulo Matos e Carlos Pacheco Prestyle	14:00 Festival Hípico Internacional
18:30 Feira Científica Viva	15:00 Concurso de saltos
19:30 Inauguração Espetáculo com Sardinhas EMOÇÕES BÉNICAS	16:30 Animação Musical em palco
20:00 Atuação do grupo MINISTROS MAIORES	17:30 CANTARES TRADICIONAIS DE ZEBREIRA SACA SONS VOZES DO FLORESTINO
20:30 Atuação do grupo DINO CRUZ Conhecimento Terrestre do The Voice Portugal	21:00 Atuação de ANJOS GABRIEL
22:00 Encerramento do Festival	

Nota: Programa sujeito a alterações.

ATIVIDADES EM PARALELO

MINERAIS À NOSSA VOLTA

DE ONDE VÊM?
PARA QUE SERVEM?

Centro Ciência Viva da Floresta | Geopark Naturtejo

7 Junho

PROMOTION FOR THE GENERAL PUBLIC



2 JUNHO 2019

ADMIRÁVEL MUNDO DA NATUREZA

Visita Temática em Segura

Orientação:
Dr.ª Manuela Catana

Informações:
Cabineta de Turismo
Câmara Municipal de Idanha-a-Nova
Tel. +351 277 202 900
Email: turismo@cm-idanhanova.pt

Atividade Integrada no Festival Desporto na Natureza

idanha.pt

V CONGRESSO DAS
MEDICINAS TRADICIONAIS
AS FÉRIAS DA NATUREZA • AS ENÉRGICAS • OS MELHORES ANCESTRAIS

III MOSTRA DA TRADIÇÃO "O CICLO DO PÃO"

PENHA GARCIA

QUINTA-FEIRA, 20 JUNHO 2019	SEXTA-FEIRA, 21 JUNHO 2019
09h30 Receção aos participantes Local: Núcleo Museológico S. Pedro de Alcântara	05h45 RITELO DO SOLSTÍCIO DE VERÃO "Nada se esconde debaixo do Sol - Leonardo da Vinci" Local: Encontro ao nascer do Sol no castelo de Penha Garcia Orador: Sofia Aguiar
10h00 Sessão Solene de abertura do V Congresso	07h30 Primo de bolos tradicionais e chá Local: Cozinha da Igreja
10h45 Entre o Céu e a Terra - O Caminho do Homem Orador: José Nogueira	08h30 Bolus do Ciclo do Pão - Pópsis - Medes Orador: Mário Pizarra
11h30 Interrupção dos Trabalhos (Facultativo) - Missa e Procissão do Corpo De Deus	09h30 Intempesto (Planta para café)
13h00 Almoço (livre)	10h30 Sistema dos trabalhos no Núcleo Museológico S. Pedro de Alcântara
13h00 As Boas na Alimentação Antiga e Tradicional Orador: Adelino Salvador	Recuperar a Bio Energia na Saúde com a prática QG - IN Orador: António Fariña
13h30 Curas Mitológicas Milenares - Através da Água - Argila e Plantas (Algumas medicações dos nossos Avós) Orador: Agostinho Freitas	11h30 Os 4 Elementos - Terra - Água - Fogo - Ar, O Fogo como Elemento Unificador Orador: Sónia Monegas e Susana Garcia
16h00 O Papel Ancestral da Bolota na Alimentação Humana Orador: Susana Nunes	13h00 Almoço (livre)
16h30 Intempesto (Planta para café)	13h30 Estónia e Energonicidade - O Caminho dos Encontros Orador: Hela Garnish
17h00 As Plantas Tóxicas que não deve Medir Orador: Francine Rodet	16h00 A Energia da Natureza Integrada no Espírito Orador: Sofia Aguiar
19h30 Como Equilibrar o Prato na Alimentação Saudável Orador: Jean Claude e Francine Rodet	17h00 Cerimónia de encerramento do V Congresso das Medicinas Tradicionais
20h00 Zébar (livre)	
22h00 DANÇA DO FOGO por Companhia Viva Arte Local - Cozinha da Igreja	

idanha.pt

XI ENCONTRO NACIONAL

8, 9 e 10 de Junho 2019

PROGRAMA

Sexta-Feira, dia 7 de Junho

19.00h – Chegada dos participantes

21.00h – Kermesse, Invenções

22.00h – Sessão Extra, Cinema

Sábado, dia 8 de Junho

10.30h – Atividade na Princesa

12.00h – Homenagem à Idanha-a-Nova

13.30h – Visita Cultural a Idanha-a-Nova (Iniciativa do Turismo)

15.00h – Mito do Dado no Bar da Princesa

16.00h – Mostra de produtos regionais, Mercado

19.00h – Jantar Gastronómico de partilha solene

21.00h – Quiz & game na CDP, Apresentações

22.00h – Show Multimedia, Idanha CDP

Domingo, dia 9 de Junho

10.30h – Atividade na Princesa

13.00h – Almoço, Povo no Espaço, traga prato e talher

14.00h – Atividades Náuticas, Barragem de Idanha

15.00h – Recuperação do CDP, atividades

16.00h – Momento etnográfico, Atividades de Idanha

20.00h – Jantar, Paella de Marisco, traga prato e talher

22.00h – Festa dos Santos Populares by Ricky Tamarit

Segunda-Feira, dia 10 de Junho

09.30h – Assembleia Geral CDP

13.00h – Encerramento: Show artístico CDP

Apoiado:

Media Partners:

Partners:

FESTIVAL DA PAISAGEM 2019

Semana Europeia dos Geoparks no Geoparque Naturtejo UNESCO

European Geoparks Week at the Naturtejo UNESCO Global Geopark

MAIO | MAY

22-23.05 **Conferência BioDivSummit - A ligação da Espécies e a Biodiversidade - Bio-Humans in the Anthropocene (Biodiversity do século XXI) / Biodiversity Conference - The Origin of Species and Biodiversity - Bio - Humanity the new Paradigm of the 21st Century**

Orador: António Fariña
Organização: Organizações de Turismo de Portugal, Idanha-a-Nova

23.05 **Aula da Natureza "No Pico dos Fosséis de Penha Garcia em busca dos Neopagos San Tolosano" / Nature Sancho - The Pico Trail of Penha Garcia seeking for the remains of Trilobites"**

Orador: Susana Nunes
Organização: Organizações Geopark Naturtejo / Município de Idanha-a-Nova

24.05 **Apresentação do Museu Virtual de Mitologia (Launch of the Landscapes Virtual Museum)**

Orador: Susana Nunes
Organização: Organizações Geopark Naturtejo / Câmara Municipal de Idanha-a-Nova

24.05 **Atividade de campo "Através da Paisagem" / Field of the Landscapes**

Orador: Susana Nunes
Organização: Organizações Geopark Naturtejo / Câmara Municipal de Idanha-a-Nova

24.05 **Atividade de campo "Através da Paisagem" / Field of the Landscapes**

Orador: Susana Nunes
Organização: Organizações Geopark Naturtejo / Câmara Municipal de Idanha-a-Nova

24.05 **Atividade de campo "Através da Paisagem" / Field of the Landscapes**

Orador: Susana Nunes
Organização: Organizações Geopark Naturtejo / Câmara Municipal de Idanha-a-Nova

JUNHO | JUNE

01-02.06 **Atividade de campo "Através da Paisagem" / Field of the Landscapes**

Orador: Susana Nunes
Organização: Organizações Geopark Naturtejo / Câmara Municipal de Idanha-a-Nova

02.06 **Atividade de campo "Através da Paisagem" / Field of the Landscapes**

Orador: Susana Nunes
Organização: Organizações Geopark Naturtejo / Câmara Municipal de Idanha-a-Nova

03.06 **Atividade de campo "Através da Paisagem" / Field of the Landscapes**

Orador: Susana Nunes
Organização: Organizações Geopark Naturtejo / Câmara Municipal de Idanha-a-Nova

04.06 **Atividade de campo "Através da Paisagem" / Field of the Landscapes**

Orador: Susana Nunes
Organização: Organizações Geopark Naturtejo / Câmara Municipal de Idanha-a-Nova

05.06 **Atividade de campo "Através da Paisagem" / Field of the Landscapes**

Orador: Susana Nunes
Organização: Organizações Geopark Naturtejo / Câmara Municipal de Idanha-a-Nova

06.06 **Atividade de campo "Através da Paisagem" / Field of the Landscapes**

Orador: Susana Nunes
Organização: Organizações Geopark Naturtejo / Câmara Municipal de Idanha-a-Nova

07.06 **Atividade de campo "Através da Paisagem" / Field of the Landscapes**

Orador: Susana Nunes
Organização: Organizações Geopark Naturtejo / Câmara Municipal de Idanha-a-Nova

08.06 **Atividade de campo "Através da Paisagem" / Field of the Landscapes**

Orador: Susana Nunes
Organização: Organizações Geopark Naturtejo / Câmara Municipal de Idanha-a-Nova

09.06 **Atividade de campo "Através da Paisagem" / Field of the Landscapes**

Orador: Susana Nunes
Organização: Organizações Geopark Naturtejo / Câmara Municipal de Idanha-a-Nova

10.06 **Atividade de campo "Através da Paisagem" / Field of the Landscapes**

Orador: Susana Nunes
Organização: Organizações Geopark Naturtejo / Câmara Municipal de Idanha-a-Nova

idanha.pt

PROMOTION FOR THE GENERAL PUBLIC



“Ouro Romano e o Conhal do Arneiro” | 2 DE JUNHO - JUNE

“The Roman Gold and the Conhal do Arneiro Gold Mine”

Monte do Arneiro | Freguesia de Santana | Nisa

INICIO | START: 9:30

Ponto de encontro: Centro Interpretativo do Conhal
| Meeting at: Conhal Interpretation Centre

Coordenadas GPS:
Latitude: 39°36'57.32" N
Longitude: 7°42'19.12" W

Custo | Price: 7 euros (inclui seguro | insurance included)
Alojamento recomendado: Monte Filipe Hotel & Spa.
Mais informações e reservas |
Information and booking: www.montefilipehotel.com
Organização: Geopark Naturtejo | Hotel Monte Filipe.
Inscrições e informações
Registration and information:
Telf: (+351) 272 320 176
E-mail: www.naturtejo.com



Visit Naturtejo Geopark in::



www.geoparknaturtejo.com



www.facebook.com/geoparknaturtejo.mesetameridional



www.instagram.com/geopark_naturtejo/



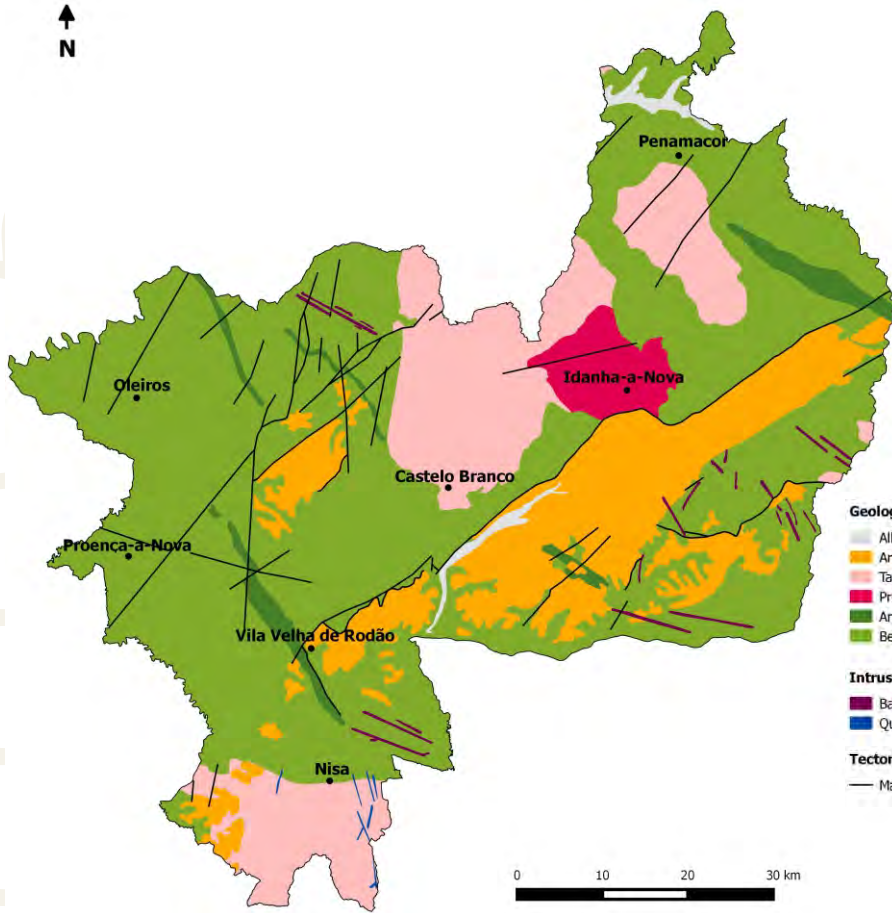
www.youtube.com/geoparknaturtejo



issuu.com/geoparknaturtejo



www.slideshare.net/geoparknaturtejomesetameridional



Geological Formations (Ma-Million years)

- Alluvium and fluvial terraces - Pliocene-Holocene (1Ma-present)
- Arkoses, breccias and conglomerates - Eocene-Pliocene (50-2.6Ma)
- Tardi-Variscan orogenic granites (315-300Ma)
- Pre-Variscan granodiorites (480-472Ma)
- Armorican Quartzite and schists - Ordovician-Lower Silurian (488-435Ma)
- Beiras Group (schists and greywackes) - Neoproterozoic (610-542Ma)

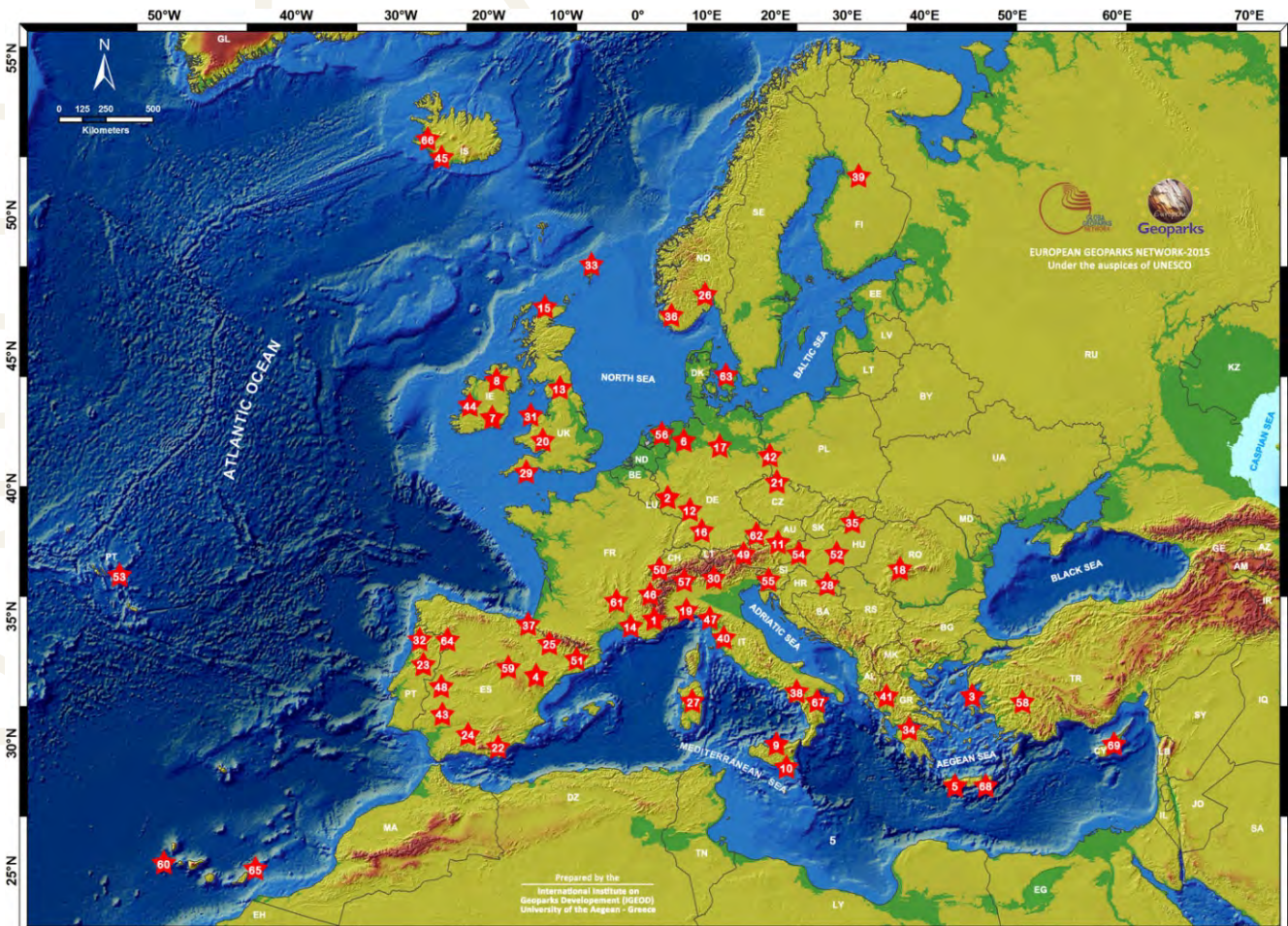
Intrusive rocks

- Basic rocks, aplites and pegmatites
- Quartz

Tectonic

- Main faults

Geoparks: Geology with human face





Ficha técnica:

Edition - Geopark Naturtejo, 2019

Coordination - Carlos Neto de Carvalho

Texts - Carlos Neto de Carvalho, Joana Rodrigues,
Manuela Catana, Municipality of Idanha-a-Nova,
Municipality of Proença-a-Nova, BioDivSummit,
Municipality of Castelo Branco

Photos - Joana Rodrigues, Carlos Neto de Carvalho,
Municipality of Idanha-a-Nova, Municipality of Proença-
a-Nova, Municipality of Castelo Branco

Clipping - Carla Jacinto e Alice Marcelo

Design - Layer [Design and Print Studio]

Translation - Carla Jacinto

Editing - Joana Rodrigues



CRUZIANA

GEOPARK NATURTEJO DA MESETA MERIDIONAL-EUROPEAN AND GLOBAL GEOPARK MONTHLY REPORT

www.geoparknaturtejo.com