



In this issue:

INTERREG Danube GEOTOUR Project Meeting at Bakony-Balaton UNESCO Global Geopark
Participation at International Birdwatching Fair - FIO 2019
First Meeting of the Advisory Council for the Cross border Biosphere Reserve Tejo/Tajo

...and more!

CRUZIANA

GEOPARK NATURTEJO DA MESETA MERIDIONAL - UNESCO GLOBAL GEOPARK - E-MAGAZINE



GEO-stories of our places and people: Aldeia do Bispo

Aldeia do Bispo é probably the smallest parish of all in Naturtejo Geopark – UNESCO Global Geopark. The big village, with 676 inhabitants, as well as the surrounding agricultural fields around the wide valley of Raivosa Stream, in the plan of the Meseta, take nearly all its 6,51 km². It is a granite land seen in the traditional architecture of the houses with balconies, the oldest of them from the 17th century. To the south and the eastern end of the village, the granites of Monsanto-Penamacor rise suddenly to 510 meters high at the Serra foothills, leaving the fertile soils and covering up with broom bushes and small woods of oak and Holm oak trees. Here the mountain splits in two parts: the East side controlled by the fault parallel to the Mato Stream, with steep slopes peaked by granitic geofoms with extraordinary volumetry; the West side, with slightly eroded slopes, traces of pedunculated boulders and other small angular shapes. The trail to Cancelo Fountain follows a fractured valley of NNE-SSW orientation, extending towards South by the Mato Stream. The occupation of these soils is ancient, the archaeological station of Lameira Larga dates back to the Roman period. The ancient Watchtower installed in the small Cabeço da Brigadeira is also very old.

Only 7km from Penamacor and a dozen kilometres from the border, tourism hasn't yet emerged in Aldeia do Bispo. However, there is a growing foreign community who is settling here, due to generous hosting, healthy environment and the possibilities to use the land. The density of rural roads is amazing and allows you to walk the whole perimeter of the parish. The Serra is perfect for guiding circuits and mountain bike trails, with perfect views over Serra da Estrela and Monsanto. The surrounding of Aldeia do Bispo is dotted with small gardens arranged with care, where abound the wells indicating the abundance of water at shallow depths. In this sunny village tucked away in the mountains, there are no lack of reasons to stay.

Bibliography

- NEIVA, A.M.R. & CAMPOS, T. (1991) - O plutão granítico zonado de Penamacor-Monsanto, Centro de Portugal: génese e alteração hidrotermal. III Congresso Nacional de Geologia: 58.
- NEIVA, A.M.R. & CAMPOS, T.C. (1992) - Genesis of the zoned granitic pluton of Penamacor-Monsanto, central Portugal. Memórias e Notícias, Publicações do Museu e Laboratório de Mineralogia e Geologia da Universidade de Coimbra, 114: 51-68.
- NEIVA, A.M.R. & CAMPOS, T.C. (1993) - The zoned granitic pluton of Penamacor-Monsanto, central Portugal: hydrothermal alteration. Memórias e Notícias, Publicações do Museu e Laboratório de Mineralogia e Geologia da Universidade de Coimbra, 116: 21-47.

The editor
Carlos Neto de Carvalho
Scientific coordinator
Geologist

Cover: (Projecto Objectiva: Geopark)



MONTHLY ACTIVITIES



13 February - INTERREG Danube GEOTOUR Project Meeting at Bakony-Balaton UNESCO Global Geopark. UNESCO Global Geoparks from Bakony-Balaton, in Hungary, Papuk, in Croatia, Einsewutzen, in Austria, Karawanken-Karavanke, in the border between Austria and Slovenia, Idrija in Slovenia and Hateg, in Romania, as well as National Parks Iron Mountains, in Czech Republic and Djerdap, in Serbia, all met at Vezsprem, in the heart of Bakony-Balaton Geopark. This meeting took place within the framework of the INTERREG Danube Geotour Project, and Naturtejo Geopark, as strategic partner, was represented by Carlos Neto de Carvalho. The presence of the Scientific Coordinator of the Portuguese Geopark was needed in order to organize the logistics and the activities to be carried out during the ITB-international tourism fair in Berlin, which will take place early next month.



14 February - Workshop "What are Trilobites?" and Field Trip "The Trilobites and Cruziana in the Ichnological Park of Penha Garcia". The educational programme was prepared to children from the Kindergarten and the Elementary School of Penha Garcia. The workshop took place in the classroom, attended by 7 children from the kindergarten and 17 from elementary school and their teachers. Here pupils watched an animation on the fascinating marine animals, the Trilobites, whose marks or ichnofossils they could watch in the afternoon, during the field trip to the Ichnological Park of Penha Garcia, close to their school, about 10 minutes walking.

Also during the morning, each pupil made a replica of a trilobite in modelling dough and all tasted “Trilobite” cookies, Geoproducts from Geocakes, a partner company of Naturtejo Geopark. Such a Trilobite Day! The teachers asked for this activity before Carnival, so that students could disguise as Trilobites during the Carnival Parade, three weeks later, and so they would become acquainted with the Trilobites and the value natural heritage around the school. The masks and clothes will be made by students supported by their teachers and assistants. Manuela Catana boosted this activity.

15 February - First Meeting of the Advisory Council for the Cross-Border Biosphere Reserve Tejo/Tajo. The Cross-Border Biosphere Reserve Tejo/Tajo International, in the framework of the Man and Biosphere Programme of UNESCO, was created in 2016 and covers 428.000ha shared between Portugal and Spain. Its creation is justified with the high degree of fauna, flora and landscape conservation, as well as cultural and ethnographic heritage values, in a rural area sustainable development promoter. In order to undertake a new dynamic action for the effective implementation of cross-border biosphere reserve Tejo/Tajo international, the Institute for Nature and Forest Conservation, responsible for its management, constituted an Advisory Council, with local intervention agents, of which the Naturtejo Geopark, UNESCO Global Geopark is part. The first meeting was dedicated to discuss and approve the Regulation to guide the action in Portuguese territory and to create sectorial working groups in order to present an Activity Plan for 2019/2020. Naturtejo Geopark was represented by Joana Rodrigues. With the approval of the Advisory Council and Manage Council, the Cross-Border Biosphere Reserve Tejo/Tajo International was formally established.



22 to 24 February - Participation at International Birdwatching Fair - FIO 2019. Naturtejo Geopark participated along with Tourism Centre of Portugal in FIO, in the National Park of Monfragüe (Spain) and UNESCO Biosphere Reserve, in a Fair dedicated to birdwatching. Jorge Costa represented Naturtejo Geopark.



24 February – Touristic Programme in Naturtejo. The Spanish Tour operator Delfinex Viajes from Malpartida de Plasencia brought a group of 30 Spanish tourists to visit Monsanto and Penha Garcia. The group was accompanied by Geolife Tours.

27 February – Field Trip to prepare the final phase of the Annual Project “Know Your Naturtejo Geopark”.

This field trip aimed to make recognition of places to select and include in the field trip in Vila Velha de Ródão, as final phase of the Educational Annual Project Anim'a Rocha “Know Your Naturtejo Geopark”. This project has a multidisciplinary approach, involving several subjects and is integrated in the subject Citizenship and Development, part of the NATIONAL STRATEGY FOR CITIZENSHIP EDUCATION, in the mandatory fields of Environmental Education and Sustainable Development. This project, by addressing Nature interpretation and conservation (Biodiversity and Geodiversity) is also part of the Eco-Schools Programme. Three 7th grade classes from the School Group José Silvestre Ribeiro in Idanha-a-Nova participated in this project. Students will visit several geosites and sites of archaeological interest of Naturtejo Geopark, in Vila Velha de Ródão, and shall present to colleagues the natural and historical-cultural heritage values using existing educational resources previously developed in classroom supported by the teachers. The field trip, as the highest step of the project is organized by the Educational Service of the Municipality of Idanha-a-Nova in partnership with the School Group José Silvestre Ribeiro and the Educational Service of Naturtejo Geopark - UNESCO World Geopark. Manuela Catana joined the teacher Elsa Cantinhas during the preparatory field trip.

IMPACT OF GEOPARK IN MEDIA



TV & Radio

15 February (Radio Castelo Branco) – Naturtejo Geopark attended the 6th Partner Meeting of the ESTEAM Project in Norway

Newspapers & www

February (Raiano) – Naturtejo Geopark attended the 6th Partner Meeting of the ESTEAM Project in Norway

7 February (Reconquista) –Barrocal Park opens this year

7 February (Reconquista) –Naturtejo Geopark travelled to Norway

13 February (Diário Digital de Castelo Branco) – Naturtejo Geopark attended the 6th Partner Meeting of the ESTEAM Project in Norway

13 February (www.gbc.gi) – Neanderthal footprints discovered in the dunes above Catalan Bay

13 February (JN) – Discovered the second Neanderthal footprint in the world

13 February (www.sciencedaily.com) – Neanderthal footprints discovered in Gibraltar

13 February (www.rtve.es) – Neanderthal footprint with 29.000 year-old discovered in Gibraltar

13 February (Telegraph) – Footprint of one of the last Neanderthals discovered in Gibraltar

13 February (www.dailymail.co.uk) – Where the last Neanderthals walked: researchers discover 29,000 year-old footprint in Gibraltar linked to human ancestor

13 February (www.tribuna.com.mx) – The second Neanderthal footprint in the world is discovered in Gibraltar

14 February (El Dia) – Discovered the second Neanderthal footprint in the world

14 February (www.ihistoriarte.com) – Discovered in Gibraltar the footprint of the first Neanderthal

14 February (Correio da Manhã) – Discovered in Gibraltar the second Neanderthal footprint in the world

14 February (www.archaeology.org) – Possible Neanderthal footprint discovered in Gibraltar

15 February (Scientific American) – Is this the footprint of one of the last Neanderthals?

15 February (www.earth.com) – Possible Neanderthal footprint found in the dunes of Gibraltar

18 February (www.sciencealert.com) – This footprint on Gibraltar could have been made by one of the last Neanderthals

18 February (www.quo.es) – The footprint of the last Neanderthal

SCIENTIFIC CONTRIBUTIONS FOR THE GEOPARK AND THE GEOSCIENCES



- MUÑIZ, F., CÁCERES, L.M., RODRÍGUEZ-VIDAL, J., NETO DE CARVAHO, C., BELO, J., FINLAYSON, C., FINLAYSON, G., FINLAYSON, S., IZQUIERDO, T., ABAD, M., JIMÉNEZ-ESPEJO, F.J., SUGISAKI, S., GÓMEZ, P. & RUIZ, F. – Following the last Neanderthals: Mammal tracks in Late Pleistocene coastal dunes of Gibraltar (S Iberian Peninsula). *Quaternary Science Reviews*. <https://doi.org/10.1016/j.quascirev.2019.01.013>.
- PEREIRA, T., CUNHA, P.P., MARTINS, A.A., NORA, D., PAIXÃO, E., FIGUEIREDO, O., RAPOSO, L., HENRIQUES, F., CANINAS, J., MOURA, D. et al. – Geoarchaeology of the Cobrinhos site (Vila Velha de Ródão, Portugal) – A record of the earliest Mousterian in western Iberia. *Journal of Archaeological Science: Reports*, 24: 640-654.
- de VICENTE, G., CUNHA, P.P., MUÑOZ-MARTÍN, A., CLOETINGH, S.A.PL., OLAIZ, A., VEGAS, R. 2018 – The Spanish-Portuguese Central System: An example of intense intraplate deformation and strain partitioning. *Tectonics*, 37. <https://doi.org/10.1029/2018TC005204>.

PROMOTION FOR THE GENERAL PUBLIC



exposição exhibition

A FLORESTA QUE NOS UNE
united by the forest

GRUTAS DA MOEDA
SÃO MAMEDE

JULHO ABRIL
july april

#jornadasAIP2019

XVIII JORNADAS
14-17 MARZO 2019 - Idanha-a-Nova

Interpretação do Património
Transfronteiriço

Organiza: Colaboran:

www.interpretaciondelpatrimonio.com



Meet Naturtejo Geopark
& UNESCO Global Geoparks at ITB
Hall 4.1 Stand 232



6 - 10 March 2019

PROMOTION FOR THE GENERAL PUBLIC



SEMINÁRIO

A INTERNACIONALIZAÇÃO DOS HOTÉIS RURAIS
QUE ESTRATÉGIAS NO FUTURO?
DISSEMINAÇÃO DE RESULTADOS DE PROJETO

28 DE MARÇO DE 2019
IDANHA-A-NOVA

ESCOLA SUPERIOR DE GESTÃO | INSTITUTO POLITÉCNICO DE CASTELO BRANCO

PROGRAMA

14H00 - Recepção e Credenciação dos Participantes

14H15 - Sessão de Abertura
Sara de Brito Filipe | Diretora da Escola Superior de Gestão Instituto Politécnico de Castelo Branco
Cláudio Mendes | Presidente da Direção da AHRP
Mafalda Costa | Vice Presidente da Câmara Municipal de Idanha-a-Nova

14H40 - Head of Digital / Negócio digital
Carla Castro | Mapfre Seguros

15H00 - Áreas Geopark: Uma Estratégia de Internacionalização do Território
Verónica Bernardo | Geopark Arouca

15H20 - Geopark Naturtejo – Estratégias para um Turismo Sustentável
Carla Jacinto | Naturtejo

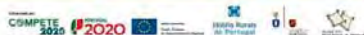
15H40 - Enofuturismo pt
José Armada | Associação Rota dos Vinhos

16H00 - Coffee-break

16H15 - O projeto de Internacionalização dos Hotéis Rurais – Indicadores e Resultados
Jorge Vieira | AHRP

16H30 - Mesa Redonda - A Internacionalização dos Hotéis Rurais – Que estratégias no futuro?
Rui Pedro Gonçalves | Associação de Turismo do Porto e Norte de Portugal
Pedro Machado | Agência Regional de Promoção Turística Centro de Portugal
Ruben Obadia | Agência Regional de Promoção Turística Alentejo
Jorge Vieira | Aires e Vioses Rural Park de Viseu
Moderação: Leonor Fernandes | Heranças do Alentejo

17H30 - Sessão de Encerramento



XVI ENCUENTRO HISPANO/LUSO ENCUENTRO LUSO/ESPAÑOL PIRAGÜISMO/CANOAGEM

Portugal - Espanha

BAJADA DEL RÍO ERJAS / DESCIDA DO RIO ERGES

Termas de Monfortinho - Salvaterra do Extremo

"Memorial Amílcar Crespo"

**24
Março**

ORGANIZACIÓN/ORGANIZAÇÃO:
ACRBB
Associação de Canoas e Bóias
962765105
acrbb@trabala.com@hotmail.com

Apóios:

BTL'19
Bolsa de Turismo de Lisboa
13 Março - 17 Março

naturtejo

Quarta-feira, 13 de Março

15h00 - Animação medieval e degustação de produtos de Idanha-a-Nova

18h00 - Degustação de produtos tradicionais do território do Geopark Naturtejo

Quinta-feira, 14 de Março

11h30 - Degustação de Cabrito Estonado e Vinho Callum, de Oleiros

Sexta-feira, 15 de Março

14h00 - Plantar Sabores: Apresentação dos eventos gastronómicos 2019 de Proença-a-Nova

16h00 - Prova de Azeites, de Castelo Branco

17h30 - Actuação do Grupo de Cavaquinhos de Penha Garcia
- Viagem pelos sabores de Idanha-a-Nova

Sábado, 16 de Março

16h00 - Degustação de produtos Terras de Oiro, de Vila Velha de Rodão

17h00 - Actuação do Rancho Folclórico de Penamacor

17h30 - Actuação do Grupo de Cantares de Pedregão de São Pedro, de Penamacor

Domingo, 17 de Março

11h00 - Plantar Sabores: Apresentação dos eventos gastronómicos 2019 de Proença-a-Nova

16h00 - Apresentação de Geobiscoitos "Seixos Rolados", de Penamacor



Passatempos

- Animação garantida ao longo de 5 dias com a encantadora mascote Judite a Trilobite
- Passatem o "Encontre o Ouro"

PROMOTION FOR THE GENERAL PUBLIC



XVII FESTIVAL
AZEITE E FUMEIRO
 2/3 . MARÇO . 2019
PROENÇA-A-VELHA
 IDANHA-A-NOVA

02 DE MARÇO	03 DE MARÇO
19:00 Abertura do certame Freguesia e escola da paróquia regional Início da certificação ao viveiro de enchidos tradicionais Ativada com o grupo de canções "ROSA DA FREGUESIA"	19:30 Abertura do certame Abertura das lojas artesãs Freguesia e escola da paróquia regional Ativada com as CONCERTINAS DE VISU
19:00 Abertura Oficial	Concurso de máscaras de Carnaval
19:30 Prova de azeites do concelho pela Escola Superior de Ciências - ESCSE Apresentação do vinho do DOP "vinho da região de Trás-os-Montes e Alto Douro"	Workshop de fabrico de enchidos para crianças
19:00 Atividades em Património BANCHO FOLCLÓRICO ETNOGRÁFICO DA CASA DO CONCEALHO DE CINGELAS BANCHO FOLCLÓRICO DE DE QUELHAS "MOÇAS E ADRESES" Grupo de Entrecano	19:00 Cadinho ao viveiro para crianças "Vamos encher chouriços"
Live cooking com degustação - Misto alentejano de casa de Portugal	19:30 GRUPO DE ADRESES E CANTARES DE OLEADO GRUPO DE CANTARES DO VALE "MOÇAS E ADRESES" GRUPO ETNOGRÁFICO DE PROENÇA-A-VELHA
19:00 Chaque "ECOS DO PASSADO"	19:00 Atividades em Património ALEGRES DAS CONCERTINAS Atividade de arte BOGIMIA
20:00 Musical de Autores - Sala das Vozes Canção Folclórica de Fátima com TELMA PEREIRA, MIGUEL CAMÕES E BEATRIZ FELIZARDO	

A documentary film by Libre Producciones
The importance of being hard

An adventure of 540 million years ago...

QUALIFICA

FEIRA DE EDUCAÇÃO, FORMAÇÃO, JUVENTUDE E EMPREGO

EXPONOR

1 DE MARÇO

PROMOTION FOR THE GENERAL PUBLIC



Summer Campaign
22 July to 30 August 2019

Archaeological Excavations

Camp 1: Cannon Battery of Batarias I
22 July to 11 August

Camp 2: Mound of Cabeço da Anta
9 August to 30 August

Camp 3: Iron Age Hillfort of Castelo do Chão do Trigo
9 August to 30 August

Camp 4: Prehistoric cave of Buraca da Moura
22 July to 11 August

Camp 5: Modern fossil path of Vale Vigário
7 to 13 April (spring campaign)

Colloquium Old Paths of Beira Baixa
October 2019

Lectures
16 July and 2, 16 and 23 August 2019

Field Trip
10 August 2019

Contacts for further information:
+351 939 127 478 (Municipality)
altotejo@gmail.com
archaeologicalfieldcamps-portugal.pt





Proença-a-Nova International Archaeological Field Camp **2019**
Campo Arqueológico de Proença-a-Nova
Portugal





Visit Naturtejo Geopark in:



www.geoparknaturtejo.com



www.facebook.com/geoparknaturtejo.mesetameridional



www.instagram.com/geopark_naturtejo/



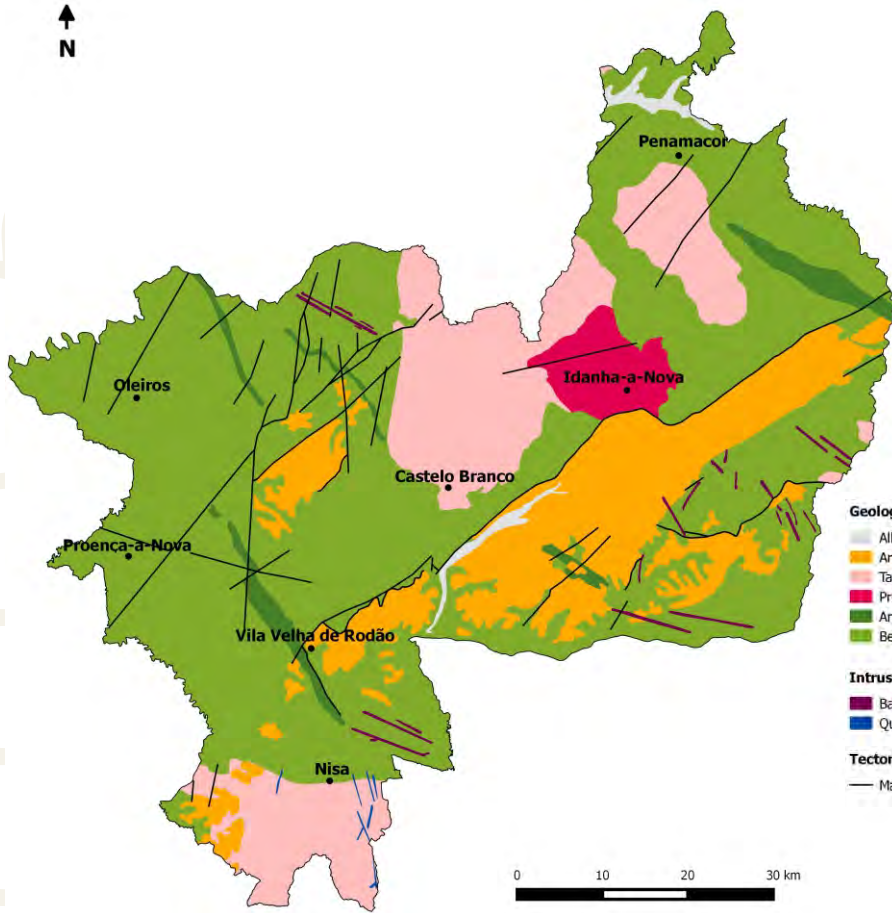
www.youtube.com/geoparknaturtejo



issuu.com/geoparknaturtejo



www.slideshare.net/geoparknaturtejomesetameridional



Geological Formations (Ma-Million years)

- Alluvium and fluvial terraces - Plistocene-Holocene (1Ma-present)
- Arkoses, breccias and conglomerates - Eocene-Pliocene (50-2.6Ma)
- Tardi-Variscan orogenic granites (315-300Ma)
- Pre-Variscan granodiorites (480-472Ma)
- Armorican Quartzite and schists - Ordovician-Lower Silurian (488-435Ma)
- Beiras Group (schists and greywackes) - Neoproterozoic (610-542Ma)

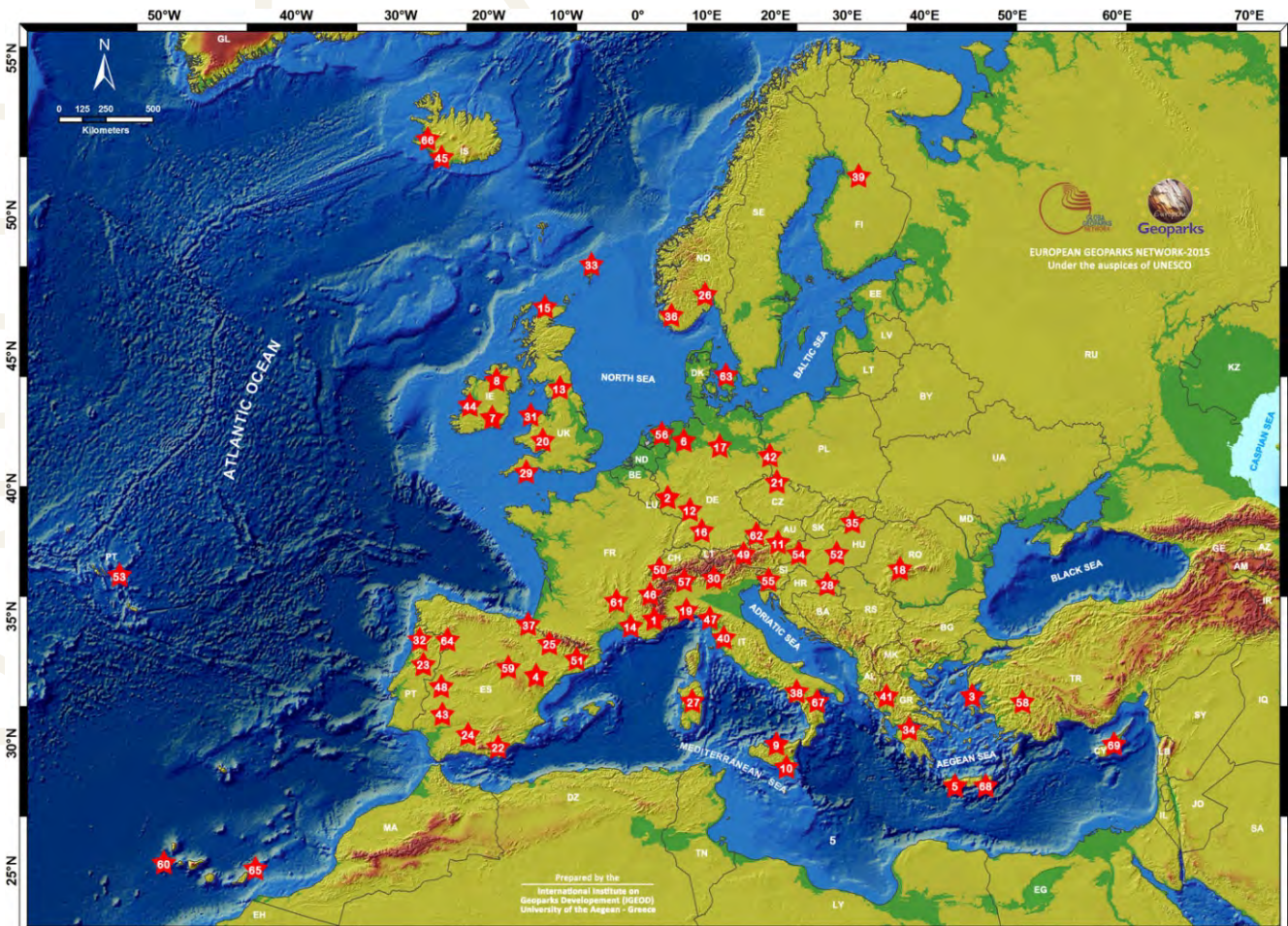
Intrusive rocks

- Basic rocks, aplites and pegmatites
- Quartz

Tectonic

- Main faults

Geoparks: Geology with human face





Ficha técnica:

Edition - **Geopark Naturtejo**, 2019
Coordination - **Carlos Neto de Carvalho**
Texts - **Carlos Neto de Carvalho**,
Joana Rodrigues, **Manuela Catana**
Photos - **Joana Rodrigues**,
Carlos Neto de Carvalho
Clipping - **Alice Marcelo e Carla Jacinto**
Design - **Layer [Design and Print Studio]**
Translation - **Carla Jacinto**
Editing - **Joana Rodrigues**



CRUZIANA

GEOPARK NATURTEJO DA MESETA MERIDIONAL-EUROPEAN AND GLOBAL GEOPARK MONTHLY REPORT

www.geoparknaturtejo.com