



In this issue:

Volunteers support the recovery of the Geomonument Fraga da Água d'Alta
Zêzere workshop with enormous involvement of communities in Cambas
Exhibition "The Forest That Unites Us" takes Naturtejo Geopark to Grutas da Moeda (Coin Caves)
Missions for UNESCO take Scientific Coordinator to the first Geopark in Ecuador and to the top of
the world
...and more!

CRUZIANA

GEOPARK NATURTEJO DA MESETA MERIDIONAL - UNESCO GLOBAL GEOPARK - E-MAGAZINE

GEO-stories of our places and people: Póvoa de Rio de Moinhos

In the plan of Castelo Branco Póvoa de Rio de Moinhos arises, between Ribeirinha Stream and Ocreza River. In a land of granite flattened by weathering from tens of millions years, the reservoir dam of Santa Águeda stands out. Rivers and Streams groove lightly a 25,49km² territory, enough to have been used for hundreds years for the milling industry which gave the name to this land. Located near Castelo Branco, the access to the parish is made through the old Pedrinha Bridge. The village has 663 inhabitants living from olive oil, cork and livestock. In a façade we find the coat of arms of the early kings of Portugal to establish the antiquity of the settlement. A bit away from the village we find the interesting Chapel of Nossa Senhora da Encarnação. Moreover there are stone crosses and “alminhas” (little shrines), manorial houses and chapels, fountains and the unavoidable mills. Caster mills now recovered are used as a motto for the annual festival. This village earned several quality B&B on farms with history and thematic restaurant in the old oil press. Local products are found in new shops. Marateca has many charms and a view to Gardunha Mountain Range.

Bibliography:

Vieira, B.D. (coord.) (2015) – Póvoa de Rio de Moinhos – Ontem e Hoje, História e Memória. RVJ – Editores, Castelo Branco, 500 pp.

Cover: (Projecto Objectiva: Geopark)

The editor
Carlos Neto de Carvalho
Scientific coordinator
Geologist



MONTHLY ACTIVITIES



July to September – Photo Exhibition “Under the Moon’s Sign”. Another photo exhibition from the photographer Valter Vinagre in Centro Cultural Raiano. The photographer travels through the Boom Festival to capture moments that make this festival one of the major international references of its kind.



1 July – Opening ceremony of the exhibition “The Forest That Unites Us” takes Naturtejo Geopark to Grutas da Moeda (Coin Caves). After last year’s massive fires, the Living Science Forest Center and Naturtejo Geopark – UNESCO Global Geopark, in partnership with the Municipality of Proença-a-Nova, launch an exhibition on Native Forest in Naturtejo Geopark “The Forest That Unites Us” in Grutas da Moeda (Coin Caves).

“The Forest That Unites Us” can be visited free of charge in the lobby of Grutas da Moeda (Coin Caves). Created by the Living Science Forest Center and Naturtejo Geopark, this show aims to make the community aware for the Richness, Diversity and Vulnerability of the Forest.

“The Forest That Unites Us” bring a bit of this UNESCO territory, which links seven municipalities of Centre and Alentejo, namely Castelo Branco, Idanha-a-Nova, Nisa, Oleiros, Penamacor, Proença-a-Nova and Vila Velha de Ródão, and is an example of Portuguese forest diversity.

Here the visitor discovers the different experiences available in the Living Science Forest Center, a place to touch, experiment, discover, imagine and learn. The Center is located in Proença-a-Nova, a municipality with 80% of its territory occupied by forest and its building has a ringed shape, recalling the cross-section of a tree – features exterior and permanent modules that allow to discover science in the forest. In a dynamic and interactive way one can travel along the growth rings of a tree, feel the forest scents, meet the fauna and flora, the trophic webs, who feeds who, which trees are more resistant to fire and much more.

The opening ceremony received many special guests, namely the Presidents of the Municipalities of Batalha and Proença-a-Nova and Armindo Jacinto, president of Naturtejo Geopark who planted three native trees in the gardens of Grutas da Moeda (Coin Caves). Next all guests enjoyed an afternoon snack served in the Scientific and Environment Center of Grutas da Moeda. This strong partnership achieved between Naturtejo Geopark and Grutas da Moeda (Coin Caves) for the central region of Portugal is the result of the collaboration over the years in the Guide of the Portuguese Geological and Mines Sites. The results through annual exhibitions and other actions have been promoting in cooperation these two geotourist destinations in the Centre of Portugal.



3 to 6 July – Evaluation mission of the first geopark in Ecuador. Carlos Neto de Carvalho was chosen by UNESCO as one of two evaluators for the first geopark project in Ecuador. Imbabura is at North of Quito and the capital is Ibarra. In this dynamic territory the theme is the formation of Andes Range. Here, volcanoes and evidence of seismic activity are abundant and different ethnic groups share the strong weather and terrain gradients to obtain the most diverse land products. With an entrepreneurial attitude, local communities are betting now on a differentiated tourism to complement the offer of craft that expresses so well the cultural and historic richness of this region.



9 to 11 July – V International Science House Meeting for teachers. The Science House organized in Guimarães the V International Meeting and gathered more than 800 teachers interested by Sciences, namely Physics, Chemistry, Biology, Geology, Maths and IT, from elementary school to high school.

The theme for this edition was “Science, Communication, Image and Technology” and marked the two major conferences, 10 speciality conferences and five panel discussions. During 3 days more than 100 trainers offered more than 80 workshops. Once again Naturtejo Geopark collaborated in organizing this great event, with the participation of Joana Rodrigues.



10 July – New vertebrate footprints found in SECIL quarry in Outão. A team from the Faculty of Science of the University of Lisbon led by Dr Vanda Santos along with Carlos Neto de Carvalho, visited the cement company SECIL in Outão, Setúbal, where they confirmed the discover of vertebrate footprints in one of its quarry located in the Natural Park of Arrábida. In Vale de Mós B quarry, in a sequence of carbonates dating from the Middle Jurassic, the specialists accompanied by the company's technicians carried out measurements in at least three levels with trails and scattered footprints of three different types of large animals. This was just the beginning of a paleontological study that will be held with the support of SECIL during the summer. Note that this good cooperation between one of the largest cement companies in Portugal and scientists results from the existing partnership within the context of the Guide of the Portuguese Geological and Mines Sites, where SECIL and Naturtejo Geopark are present to value and promote geological Heritage.



13 July – Volunteers support the recovery of the Geomonument Fraga da Água d'Alta. More than one hundred volunteers gathered to clean the geomonument of Cascata da Fraga da Água d'Alta and GeoRota do Orvalho trail, severely threatened by last October fires. The ABEM Programme: Solidarity Network of Medicine, from Dignitude Association, promoted a solidarity campaign, bringing volunteers from all over the country for a day of intense work to bring back the touristic potential to this place. Naturtejo Geopark joined the Abem day, focusing on thinning Acacias, manual boot and also peeling of Acacia trees, cutting herbaceous, clearing the water line and remaining collection. Naturtejo Geopark was represented by Joana Rodrigues.



13 to 15 July - Nature and Culture in Naturtejo Geopark to American University Students. American University Students participated in an educational program for a weekend in Naturtejo Geopark, UNESCO Global Geopark under the “Study in Portugal Network” Program, promoted by the Luso-American Development Foundation (FLAD), for the 4th year in a row.

26 students, 2 teachers and a technician from FLAD, who are temporarily in Portugal for studies and placements and study in USA, came to Naturtejo Geopark.

Naturtejo Geopark's Educational Service prepared a program “Nature and Culture”, supported by the Municipality of Idanha-a-Nova. The group attended a performance by Adufeiras from Rancho Etnográfico of Idanha-a-Nova, and in the Cultural Forum, they learned to build and play adufe (timbrel) in a workshop held by the technician from the Arts and Crafts Centre. The group visited the Museum Centre of Oil Press in Proença-a-Velha, accompanied by a municipality technician, and were delighted by the codfish and sweet porridge, prepared and served by Proença - League for the development of Proença-a-Velha, and supported by the Parish. During their stay the students met 2 of the most important Geomonuments, the Icnological Park Of Penha Garcia and the Inselberg of Monsanto. The group was accompanied by Manuela Catana.



13 to 15 July - Watermelon Festival in Ladoeiro promotes Designation of Origin. The Festival “Knowledge and Traditions of Beira Baixa: Watermelon” dedicated to the iconic Watermelon from Ladoeiro, from the Plain of Idanha received local producers, geoproducts from Casa dos Xarês and Acha Doce Liqueurs among many others.

The geologist Joana Rodrigues was a jury member for the Competition on Watermelon Sculptures, a fresh and funny contest for professionals and amateurs and the result were true art pieces as busts, flower baskets, animals, funny faces... all evaluated by the technique and creativity.

The Conference “Sustainable Agriculture” included in the Festival presented the BioRegion of Idanha-a-Nova and discussed Organic Agriculture and Watermelon from Ladoeiro, recognized by its unique characteristics and will enter in a qualifying process with Designation of Origin (DOP) to certify its origin, authenticity and quality.



16 July to 2 September - International Archaeological Field in Proença-a-Nova make new findings. The International Archaeological Field in Proença-a-Nova (CAIPN) is a mixed model of field work, research and learning preferably for archaeology, history and archaeosciences students, which began in 2012 as Archaeological Field of Proença-a-Nova and from 2013 became international. The primary aim is to study, preserve and disseminate the archaeological sites in the municipality and raise awareness for a heritage still unknown for many. The VII International Archaeological Field OF Proença-a-Nova 2018, a partnership between the municipality and the Association of High Studies of Tejo, featured three distinct periods of excavation: in Bateria das Baterias (Catraia Cimeira) from July 16 to August 5, in the dolmen Cabeço da Anta (Moitas) from July 30 to August 19, and in the village of Castelo do Chão do Trigo (Peral) from 13 August to 2 September. Taking advantage of the presence of archaeologists and students, on July 22 the group visited the Dolmens and Tumuli in Moita and assisted a workshop in context of excavation and lithology (learning stone preparation methods for various purposes).



20 July to 30 October - Exhibition "Who has time makes spoons" in Centro Cultural Raiano. The exhibition from the designer and illustrator Sílvia Léxico is based on pastoral art, as identity reference of a region where Naturtejo Geopark is included.



20 July - Gold mining in the Lands of Adiça. For recognition of Pliocene lands in the ancient mines of Adiça, dated of the beginning of nationality, Carlos Neto de Carvalho went to Costa da Caparica Fossil Cliff with three students of Professor Mario Cachão from the Faculty of Science of University of Lisbon. Together, they collected several samples along the sequence that emerge fantastically along the coast and conducted several field tests with panning to obtain the heavy fraction. This work is part of Roman Lisbon project for which Naturtejo Geopark was invited to contribute on gold mining held massively along the Tejo River, from Lisbon to the Geopark territory recognized by the important traces of gold.



25 to 30 July - On the top of the world to revalidate Kunlunshan UNESCO Global Geopark. Again representing UNESCO, Carlos Neto de Carvalho was invited as evaluator for the first revalidation of UNESCO Global Geopark of Kunlunshan, in the Qinghai province, in NW of China. In the middle of Tibetan plateau, more than 4000 meters of altitude, the challenging mission covered more than 7000km² in this country of deserts and mountains carved by glaciers, where nomad families scatter in a landscape of winding rivers, alluvial fans and dune systems. Evaluators testified the multiculturalism of 34 ethnic groups currently living in direct interaction in this sparsely region of the planet.

27 to 29 July - Lynx Lands Festival in Penamacor. The Municipality of Penamacor hosted another edition of The Lynx Lands Festival. Music, street entertainment, exhibitors and small taverns delighted visitors during three days. Naturtejo Geopark attended once again with a promotional stand to raise awareness for the territory



28 July - Zêzere Workshop brings culture and Geodiversity to Cambas. In the context of “Tem Parishes, Ten Experiences”, the parish of Cambas hosted the “Zêzere Workshop”, which started with a walking trail descending from the village of Pisoria to Cambas, with a recreation of traditions and mountain and river experiences, namely herding goats, spinning flax, village activities, family vegetable gardens, resin, honey, fishing, in a massive community involvement who volunteered to show their parish to visitors. The geologist Joana Rodrigues contributed to the interpretation of the geomorphological aspect of Zêzere River and the geomonuments Zêzere River Meanders and Zêzere River Gorge. Participants experienced gold mining, told in the first person by some inhabitants of Cambas, participants in this workshop. In the River Beach of Cambas was re-enacted the “Ancient everyday life in the river banks, the anchorage of Viriato and the Portuguese safe heaven”, the participants tried kayaks, traditional boats and tasted fish from the river.

IMPACT OF GEOPARK IN MEDIA



TV & Radio

July (RDP International – Program “1001 Reasons to love Portugal” – Ichnological Park of Penha Garcia

July (Hertz Radio) – Spot “The Forest That Unites Us in Grutas da Moeda (Coin Caves)”

19 July (Beira Baixa TV) – American University Students visit Naturtejo Geopark, UNESCO Global Geopark

25 July (Condestável Radio) – Zêzere Workshop is next weekend

Newspapers & www

July (Boletim Municipal) – Natural landscape favours Hiking

July (<https://realtraveladventures.com/portugal-nature-parks-and-wildlife-reserves/>) – Portugal: Nature Parks and Wildlife Reserves

July (Kstati Russian-American newspaper published in San Francsico <http://kstati.net/o-prirode-portugalii/>)- **О природе Португалии**

5 July (Reconquista) – Exhibition in Grutas da Moeda (Coin Caves) – The Forest That Unites

5 July (Reconquista) - Zêzere workshop in Cambas

10 July (El Comercio Ecuador) – Imbabura wants to be certified as geopark

18 July (Povo da Beira) - Zêzere workshop in Cambas

19 July (BeiraNews) – American University Students visit Naturtejo Geopark – UNESCO Global Geopark

19 July (Diário Digital) – Zêzere in highlight in Cambas for the initiative 10 Parishes 10 Experiences

20 July (Diário Digital) - American University Students visit Naturtejo Geopark – UNESCO Global Geopark

25 July (Povo da Beira) – Zêzere workshop Scheduled for next Saturday

26 July (Reconquista) – Zêzere workshop happens next Saturday

SCIENTIFIC CONTRIBUTIONS FOR THE GEOPARK AND THE GEOSCIENCES



Neto de Carvalho, C. – Bear Tracks in the Pleistocene at the North of Praia do Cavalo, Odemira (Portugal). XVI Annual Meeting of the European Association of Vertebrate Palaeontologists. UNL-Caparica June 29th July 1st 2018, p. 138.

PROMOTION FOR THE GENERAL PUBLIC



exposição exhibition

A FLORESTA QUE NOS UNE

united by the forest

GRUTAS DA MOEDA
SÃO MAMEDE

JULHO 2018 ABRIL 2019
july april

COLÓQUIO

PATRIMÓNIO E ARQUEOLOGIA

no concelho de proença-a-nova

11 AGO
AUDITÓRIO MUNICIPAL
9H00

Berra Baixa CULTURAL

MONSANTO

26 DE AGOSTO DE 2018

A DIABÓLICA

INFORMAÇÕES E INSCRIÇÕES

Distância: +/- 3 Km
Dificuldade da Rota: Média/Alta
Ponto de encontro / hora: Capela de S. Pedro de Vir a Corça pelas 9h30m da manhã.
Número de inscrições Limitada
Inscrição Gratuita. Pequeno-almoço opcional.

Email: geolife.turismo@gmail.com
Tel.: +351 962 936 649 | +351 964 588 947

Promotor: **CENTRO 2020**

idanha.pt

2018 | MOSTRA Puro Sangue Lusitano

Penha Garcia | 10, 11 e 12 de Agosto de 2018

Homologado pela Associação Portuguesa Criadores do Cavalo Puro Sangue Lusitano

APOIO:

- Câmara Municipal de Idanha-a-Nova
- Junta Freguesia de Penha Garcia
- Comissão de Festas 2018

ORGANIZAÇÃO:

- Condições Manuel Vitoriano
- ACCLEB Associação Criadores do Cavalo Puro Sangue Lusitano
- visualser Publicidade www.visualser.com

PROMOTION FOR THE GENERAL PUBLIC



Summer Campaign
16 July to 2 September 2018

Archaeological Excavations
Camp 1: Cannon Battery of Batarias I
July 16 to August 5
Camp 2: Mound of Cabeço da Anta
July 30 to August 19
Camp 3: Iron Age Hillfort of Castelo do Chão do Trigo
August 13 to September 2

Colloquium Archaeology of Proença-a-Nova
August 11

Lectures
July 25, August 8 and August 22

Workshop SIG in Archaeology
August 15

Field Trip
August 1 and 17

Contacts for further information:
+351 939 127 478 (Municipality)
altotejo@gmail.com
archaeologicalfieldcamps-portugal.pt

Archaeological Field Camps Portugal
MESOPOTAMOS
LDTM

2018
Proença-a-Nova International Archaeological Field Camp
Campo Arqueológico de Proença-a-Nova
Portugal

Visit Naturtejo Geopark in:



www.geoparknaturtejo.com



www.facebook.com/geoparknaturtejo.mesetameridional



www.instagram.com/geopark_naturtejo/



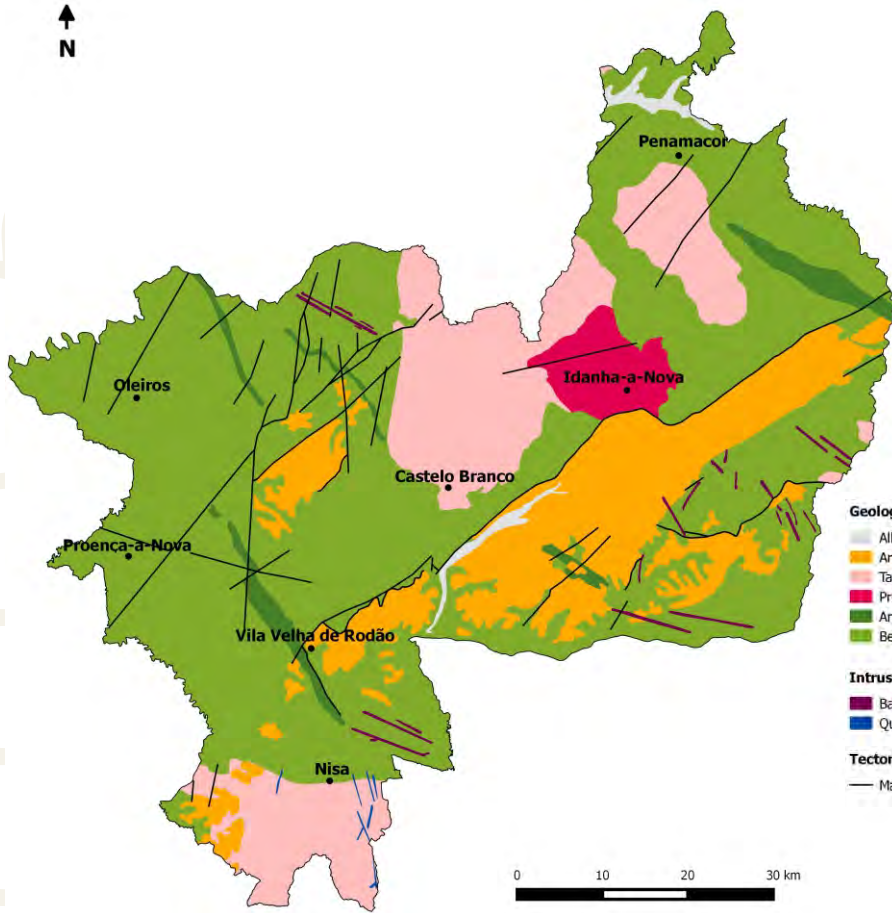
www.youtube.com/geoparknaturtejo



issuu.com/geoparknaturtejo



www.slideshare.net/geoparknaturtejomesetameridional



Geological Formations (Ma-Million years)

- Alluvium and fluvial terraces - Plistocene-Holocene (1Ma-present)
- Arkoses, breccias and conglomerates - Eocene-Pliocene (50-2.6Ma)
- Tardi-Variscan orogenic granites (315-300Ma)
- Pre-Variscan granodiorites (480-472Ma)
- Armorican Quartzite and schists - Ordovician-Lower Silurian (488-435Ma)
- Beiras Group (schists and greywackes) - Neoproterozoic (610-542Ma)

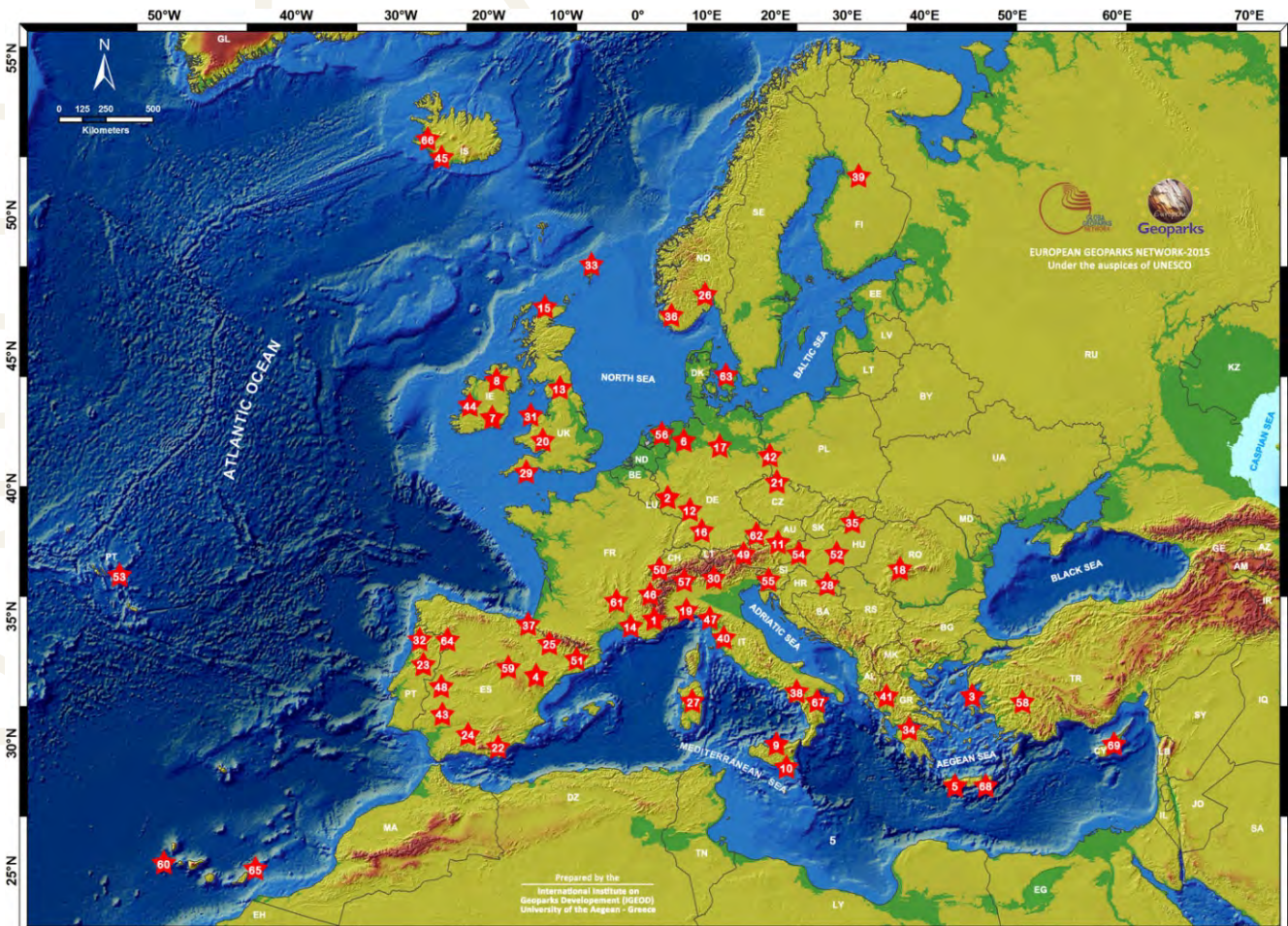
Intrusive rocks

- Basic rocks, aplites and pegmatites
- Quartz

Tectonic

- Main faults

Geoparks: Geology with human face





Edition - **Geopark Naturtejo, 2018**
Coordination - **Carlos Neto de Carvalho**
Texts - **Carlos Neto de Carvalho, Joana Rodrigues,**
Município de Idanha-a-Nova,
Associação de Estudos do Alto Tejo
Photos - **Joana Rodrigues, Carlos Neto de Carvalho,**
Município de Proença-a-Nova
Clipping - **Alice Marcelo e Carla Jacinto**
Translation - **Carla Jacinto**
Design - **Layer [Design and Print Studio]**
Montagem - **Joana Rodrigues**



CRUZIANA

GEOPARK NATURTEJO DA MESETA MERIDIONAL EUROPEAN AND GLOBAL GEOPARK MONTHLY REPORT

www.geoparknaturtejo.com