



In this issue::

ESTEAM Meeting gathers education specialists in Norway
Naturtejo Geopark in SciCom 2017
Bread Festival in the Historical Village of Idanha-a-Velha
Presentation of Rivers Project in Schools of Idanha
...and more!!

CRUZIANA

GEOPARK NATURTEJO DA MESETA MERIDIONAL - UNESCO GLOBAL GEOPARK - E-MAGAZINE



Organização das Nações Unidas para a Educação, Ciência e Cultura - Naturtejo da Meseta Meridional Geoparque Mundial da UNESCO



GEO-stories of our places and people:

Naturtejo Geopark wounded by wildfires

We will never forget this summer. Between June and October the wildfires stuck on the poor and abandoned country's interior, leaving death marks and abandoned paths on this already forgotten land. In August more than 600 ignitions occurred in a day: the dry and hot summer were not enough to hide the criminal hand that extends from North to South and that cannot be a coincidence, but opportunism that killed more than 100 people in Portugal and wasted hundreds of million Euros of productive wealth and public money. In a forest territory as Naturtejo Geopark, this calamity was also felt. Almost 400km² of landscape was reduced to black that will leave mark for years, more than 9 million Euros in damages, many homes destroyed, one good life lost. Several touristic resources were threatened to death. Five of the seven municipalities were severely affected by wildfires. The municipalities of Vila Velha de Ródão and Proença-a-Nova were touched severely by the flames from North to South. Muradal Mountain in Oleiros was painted in black in almost all extension, with the almost complete destruction of the project of International Appalachian Trail. The strong investment for preservation and recovery of the relic forest of Fraga da Água d'Alta reduced to almost nothing in just a few minutes. The schist village of Álvaro, precious near Zêzere, had the flames covering the sky for one night and part of its ancient core, composed by dozens of homes, were destroyed. The protected landscape of Gardunha Mountain was swept by several fires in the green foothills from the cherries to the scarp ridges. In Talhadas Mountain fortunately the Geomonument of Portas de Almourão was saved. Everything else was swallowed by flames, including 70% of the area of Natural Monument of Portas de Ródão, where the community of junipers was severely affected and can only recover after some decades. The flames managed to cross Tejo River, projecting across more than 100 meters, to leave deep scars in the northern part of the municipality of Nisa.

After this giant calamity we must reflect on the tourist future of Naturtejo Geopark. Taking nature as priority resource for tourist development, what to expect from a forest planning policy that favours these situations decade after decade? In other countries, those so-called "developing countries", owners can apply and are rewarded for maintaining or plant native forest in their properties pristine as possible. Here the eucalyptus' power and abandon of softwoods still rule in a territory losing its competitiveness at high speed, and cannot recover in a short or middle term its natural resources. The forest is extinguished in Portugal, what is left from the forest native forest is due to cork industry. Is it an interior geographically transformed in a rock desert and demographically desertified what we want for our country? Can Naturtejo Geopark – UNESCO Global Geopark contribute in any way to change the poisoned present we live in this land of few and for few only?

The editor

Carlos Neto de Carvalho
Scientific coordinator
Geologist

Cover: (Projecto Objectiva: Geopark)



MONTHLY ACTIVITIES



3 to 5 October – Naturtejo Geopark travels to Norway for a meeting on the European Project ESTEAM. The third partners meeting of the European project of Education for Natural Sciences and New Technologies – ESTEAM (co financed by ERASMUS + Programme of EU) took place in Norway, at Magma UNESCO Global Geopark. This third meeting organized by Magma Geopark was attended by 14 representatives from partner entities (Iceland, Norway, Slovenia and Portugal). The Portuguese participants, Naturtejo Geopark – UNESCO Global Geopark was represented by Manuela Catana and Mariana Vilas Boas, and the School Group José Silvestre Ribeiro from Idanha-a-Nova, by the teachers of Natural Sciences André Azeiteiro and Elsa Cantinhas. The meeting was dedicated to evaluate the first stage of the project, which last one year, and the result was an eBook “Research of national curricula on Natural Sciences in Portugal, Norway and Slovenia”. This eBook shows the results of the online research on students and teachers and will be the base to develop the App which is the second phase of the project. During the meeting partners discussed on the features/tools, themes and sub themes and held workshops to decide possible exercises for the App. Despite the strong rain, partners walked the trail of the Eigerøy lighthouse, chosen by MAGMA Geopark as pilot trail on this project for the App. Partners also had the chance to visit a local Secondary School (Dalane Secondary School), and together along with a visitor class from Iceland tested Turf Hunt app in the Ytstebrød trail. This was a very successful meeting where ideas were shared and advances were made. The ESTEAM project team will continue collecting information for the exercises, so that the test phase begin in a near future. Next meeting will be in Naturtejo Geopark – UNESCO Global Geopark in March 2018.

11 October – Visit to Monsanto. Jorge Costa accompanied 35 tourists from Cambre, Coruña (Spain), to visit the Historical Village of Monsanto.

12 and 13 October – Naturtejo Geopark in SciCom 2017. The Science Museum of University of Coimbra held the SciCom 2017 Congress, under the theme “Earth: Science Objects”. Invited by the Living Science Centre of Lagos, Naturtejo Geopark participated in the panel “Science outdoors: communication, tourism and sustainability”, along with Dark Sky Alqueva, Living Science and Living Science Centre of Lagos. Joana Rodrigues shared Naturtejo Geopark’s experience, in a Congress dedicated to Science Communication.



12 and 13 October – Two days Educational Programme in Naturtejo Geopark. 36 students from Educational Institute of Juncal, Porto de Mós, accompanied by two teachers visited Naturtejo Geopark. The first day was dedicated to the Geomonument Portas de Almourão. Students walked through the trail “Secrets of Vale Mourão” where they learned about the landscape and watched the magnificent folds and several ichnofossils in the quartzite rocks. Later in Sobral Fernando, on the right bank of Ocreza, they learned and practice gold mining techniques. It was a happy afternoon! They found 3 flakes of this precious ore! The second day was dedicated to the study of ichnofossils in the Ichnological Park of Penha Garcia and the granite forms of the Inselberg of Monsanto. This visit was carried out within the framework of the subjects of Biology and Geology of 10th and 11th grade. The monitors were Mariana Vilas Boas, Manuela Catana and Catarina Caria.

14 and 15 October – King Wamba and Bread promote traditions of Idanha-a-Velha. The historical village of Idanha-a-Velha hosted a weekend of history, legends and traditions, with entertainment and uniqueness of “In King Wamba’s Lands... There is Bread!”.

Among visitors, Portuguese and foreigners, King Wamba came back for two days to the ancient Egitânea, where according to the legend he was born on the 7th century. This legendary Visigoth King joined, for the first time, the annual celebration of “Casqueiro Bread”, one of the most iconic products in the region. “This event is a trip through the history of Idanha-a-Velha, whose heritage dates back to the Roman, Suevian, Visigoth, Arab and Templar period into our days”, said Armindo Jacinto, president of the Municipality of Idanha-a-Nova in the opening ceremony. The mayor also highlighted the importance of these cultural events, “they are essential to enhance our lands and traditions, and also to boost local economy, creating wealth and jobs”.

This initiative was included in the cycle “12 in Network – Festive Villages”, promoted by the Historical Villages of Portugal and was organized in partnership with the Municipality of Idanha-a-Nova, Union of Villages of Monsanto and Idanha-a-Velha and LAFIV – Friends of the Village of Idanha-a-Velha. With street animation, concerts, workshops, handicraft and traditional products market, this event attracted many visitors.



18 and 26 October – Rivers Project – Ponsul River 2017/2018 Presentation classes in the School Group José Silvestre Ribeiro, Idanha-a-Nova. Presentation classes for the “Rivers Project – Ponsul River 2017/2018” took place for 5th A, 5th B, 5th C, 8th A and 8th B classes. 109 students and 3 teachers get to know the aim of this project, with special focus on the public involvement on preservation and improvement of river spaces and water quality, as way to promote sustainable development. Students learned that Rivers Project, although local, is also supported by international guidelines established by UNESCO Sustainable Development Goals (2015-2030); Earth Charter (UN); and the Community Water Framework Directive (EU). The monitors for these classes were Arlindo Cardoso and Manuela Catana.

IMPACT OF GEOPARK IN MEDIA



Newspapers & www

3 October (Visit Portugal) – Naturtejo Geopark

19 October (Reconquista) – in Portas de Almourão – Climbing already celebrates a decade

SCIENTIFIC CONTRIBUTIONS FOR THE GEPARK AND THE GEOSCIENCES



- FIGUEIREDO, S., CUNHA, P.P., NETO DE CARVALHO, C. & SOUSA, F. – Presença de *Paleoloxodon antiquus* no Plistocénico de Portugal: estado actual dos conhecimentos. In Gomes, A., Gonçalves, C., André, L., Bicho, N. & Boski, T. (eds.), *Mudanças em Sistemas Ambientais e sua Expressão Temporal*. Livro de Resumos da IX Reunião do Quaternário Ibérico. Universidade do Algarve, Faro, 19-20.

PROMOTION FOR THE GENERAL PUBLIC



EXPOSIÇÃO
GEOPARK NATURTEJO
 A ROCHA QUE NOS UNE

8 Abr. a 29 Out. de 2017
 Grutas da Moeda
 S. Mamede

ATÉ 15 DE NOVEMBRO!!

SEMANA DA FLORESTA AUTÓCTONE
 20 A 24 DE NOVEMBRO / 2017

PARA O FUTURO DA NOSSA FLORESTA!
 Ações direcionadas para os alunos do Pré-escolar e 1º Ciclo do Agrupamento de Escolas Ribeiro Sanches e alunos da Academia Sénior de Penamacor, no âmbito das celebrações do Dia da Floresta Autóctone, assinalado a 23 de novembro.

PROGRAMA
 Dias 20, 21, 23 e 24: Visita de estudo dos alunos do 1º Ciclo ao Viveiro Florestal da Mataz. Centro de Educação Ambiental da Sra. da Graça (aberto das 10:00h às 12:30h).
 Dia 22: Plantações com alunos da Academia Sénior de Penamacor. Programa, das 14.00h às 17.00h.
 Dia 23: Apresentação sobre a Floresta Autóctone, seguida de plantação com os alunos do pré-escolar. Centro Escolar, das 14.00h às 17.00h.

26
 Novembro
 2017

PASSEIO MICOLÓGICO

Caminhada, observação, identificação, caracterização e degustação de cogumelos.

Penha Garcia

2017
 IDANHA-A-NOVA

24 NOVEMBRO
9 DEZEMBRO
2017

FESTIVAL INTER-NACIONAL DE MÚSICAS ANTIGAS

FORA DO LUGAR

24 NOV. 21:30
 IDANHA-A-NOVA
 DANÇAS CELESTES
 PORTUGAL

25 NOV. 21:30
 SANTIAGO DO ESTREMO
 MÚSICAS REGIONAIS
 ALENQUAR, COLENHA
 ALENQUAR

01 DEZ. 21:30
 LAOBERGO
 SCARABALLOCCA
 ESTREMOZ, PORTUGAL

02 DEZ. 21:30
 MONSANTO
 BONDIARI
 SILEVA, SÁO
 CATALINHA HUNGÁRIA

08 DEZ. 21:30
 IDANHA-A-NOVA
 FILME BARROCO +
 CHARLIE CHAPLIN
 PORTUGAL, PORTUGAL

09 DEZ. 21:30
 IDANHA-A-NOVA
 FIORE DE VITTORIO
 ITALIA

+ MÚSICA
 + PAISAGEM
 + HISTÓRIAS
 + OCCASIONAIS
 + GEDRÃO
 + MÚSICA EM
 + MASTERCLASSES
 + PROJEÇÃO
 EDUCATIVA

IDANHA-A-NOVA
 UNESCO
 CREATIVE
 CITY OF
 MUSIC
 CIDADE
 CRIATIVA
 DA MÚSICA

FORADOLUGARPT

PROMOTION FOR THE GENERAL PUBLIC



8º FESTIVAL DE VINHOS E LICORES
* SÃO MIGUEL DE ACHA *

SABADO > 11 NOVEMBRO 2017 **11 e 12 NOVEMBRO 2017**

13h00 > Abertura da Festival de Vinhos e Licores, Produtos Regionais e Tapachinas. Grupo de Percussão de Galta-de-Folha

16h00 > Inauguração do Festival com provas de vinhos e licores pelas tasquinhas do certame, visita aos stands das adegas presentes. Animação de rua - Maratona encantada - "O vinho da Pinga" Animação de rua grupo de percussão Ton'Anacardas

16h30 > Início da confecção da maior sangria de vinho tinto de Portugal

17h00 > Prova de sovernos promovida pela "Confraria de Sovernos de São Miguel de Acha"

18h00 > Atuação dos Grupos: Cantares Tradicionais de São Miguel de Acha - Cantares Tradicionais de Bragançã

18h30 > Grupo de Concertinas da Beira

19h00 > Grande Noite de Fados "Vinho e Licores": Galitara portuguesa - António Sérgio, Viola de fado - João Carvalho, Viola Baixo - Samuel Garcia Vozes: Vera Cristina, Rui Azeite, Valéria Carvalho

DOMINGO > 12 NOVEMBRO 2017

09h00 > Pesquisa Pictora "Rota dos Vinhos" Inscricoes - 917 048 187 / 727 537 251

10h00 > Abertura da Festival de Vinhos e Licores, Produtos Regionais e Tapachinas. Animação de rua - Maratona encantada - "O vinho da Pinga" Live cooking - "Frutas Dóceas" Grupo Galta de Fôles da Beira

15h00 > Início do 3º Concurso de Vinhos e Licores organizado pela ESE - Escola Superior de Gestão do Instituto Politécnico de Castelo Branco. Grupo de concertinas "Alargos das Cantarinas"

16h30 > Momento tradicional com prova dos sovernos

17h30 > Grupo de música Tradicional Portuguesa "Óndes Insular"

i-Danha Food Lab

IDANHA-A-NOVA
10 a 12 de Novembro de 2017
Escola Superior de Gestão | IPCB

I INTERNATIONAL SEMINARY ON SUSTAINABLE TOURISM AND GEOPARKS

SEVILLE
24th-26th
NOVEMBER
2017

Andalucía
JUNTA DE ANDALUCIA

<https://geoturismoandalucia.turismoandaluz.com>

PROMOTION FOR THE GENERAL PUBLIC



ateliês VILA MADEIRO

NATAL NA FLORESTA
Trabalhos manuais, elaborados com materiais naturais e reciclados.

INFORMAÇÕES:
p@culturagop.com | penamacor.pt | tel. 271 944 104

**NOVEMBRO 2017
PENAMACOR**
Segundas, quartas e sextas-feiras, das 20:30h às 22:00h, com início dia 3 de novembro. (Junto ao edifício da Segurança Social)

Venha participar na decoração das ruas do evento que é de todos nós!

PROVERE CENTRO III P3000



"Toma mais um chá", disse o Lebre de Março a Alice, com muita serenidade."

CHÁ DA "ALICE"

Apresentação da Obra "Alice, As Aventuras no País das Maravilhas" com ilustrações de Luísa Ferreira Nunes



22 de Novembro de 2017, 21h00
Centro Cultural Raiano, Idanha-a-Nova
Entrada Gratuita



CENTRO CULTURAL RAIANO
TELEFONO: +351 271 204 900
WWW.CCR-Idanha-a-Nova.PT
WWW.FACEBOOK.COM/CCRAMANO

Idanha-a-Nova
Território UNESCO



VII Congresso Jovens Investigadores em Geociências, LEG 2017

organização

www.estremoz.cienciaviva.pt

co-organização

UNIVERSIDADE DE ÉVORA, PORTO, UNIVERSIDADE DE ÉVORA

ZM-3D, 2020, LIRIO, REGUM

financiamento

UNIVERSIDADE DE ÉVORA, CIÊNCIA VIVA, Estremoz

APOIOS

Pátio Solarés, DELTA, GRUPO NABERO, Happy Messy Kitchen

naturtejo, TI, Tiago Cabaco

MNIÃO, APG, PROSECO

PROMOTION FOR THE GENERAL PUBLIC



Ouro

DA FORMAÇÃO DO UNIVERSO À
CONQUISTA DO ESPAÇO

EXPOSIÇÃO
Geopark Naturtejo
Geoparque Mundial da UNESCO

Proença-a-Nova
Centro Ciência Viva da Floresta
21 de julho a 31 de dezembro

2017



Visit Naturtejo Geopark in:



www.geoparknaturtejo.com



www.facebook.com/geoparknaturtejo.mesetameridional



www.instagram.com/geopark_naturtejo/



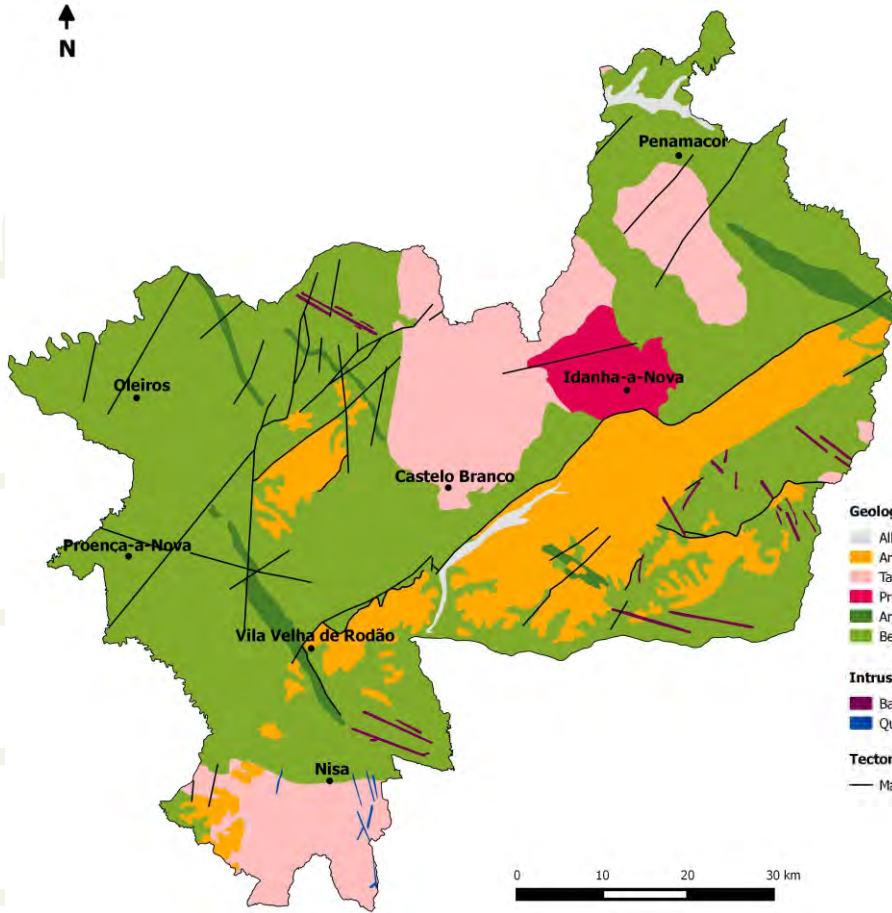
www.youtube.com/geoparknaturtejo



issuu.com/geoparknaturtejo



www.slideshare.net/geoparknaturtejomesetameridional



Geological Formations (Ma-Million years)

- Alluvium and fluvial terraces - Pliocene-Holocene (1Ma-present)
- Arkoses, breccias and conglomerates - Eocene-Pliocene (50-2.6Ma)
- Tardi-Variscan orogenic granites (315-300Ma)
- Pre-Variscan granodiorites (480-472Ma)
- Armorican Quartzite and schists - Ordovician-Lower Silurian (488-435Ma)
- Beiras Group (schists and greywackes) - Neoproterozoic (610-542Ma)

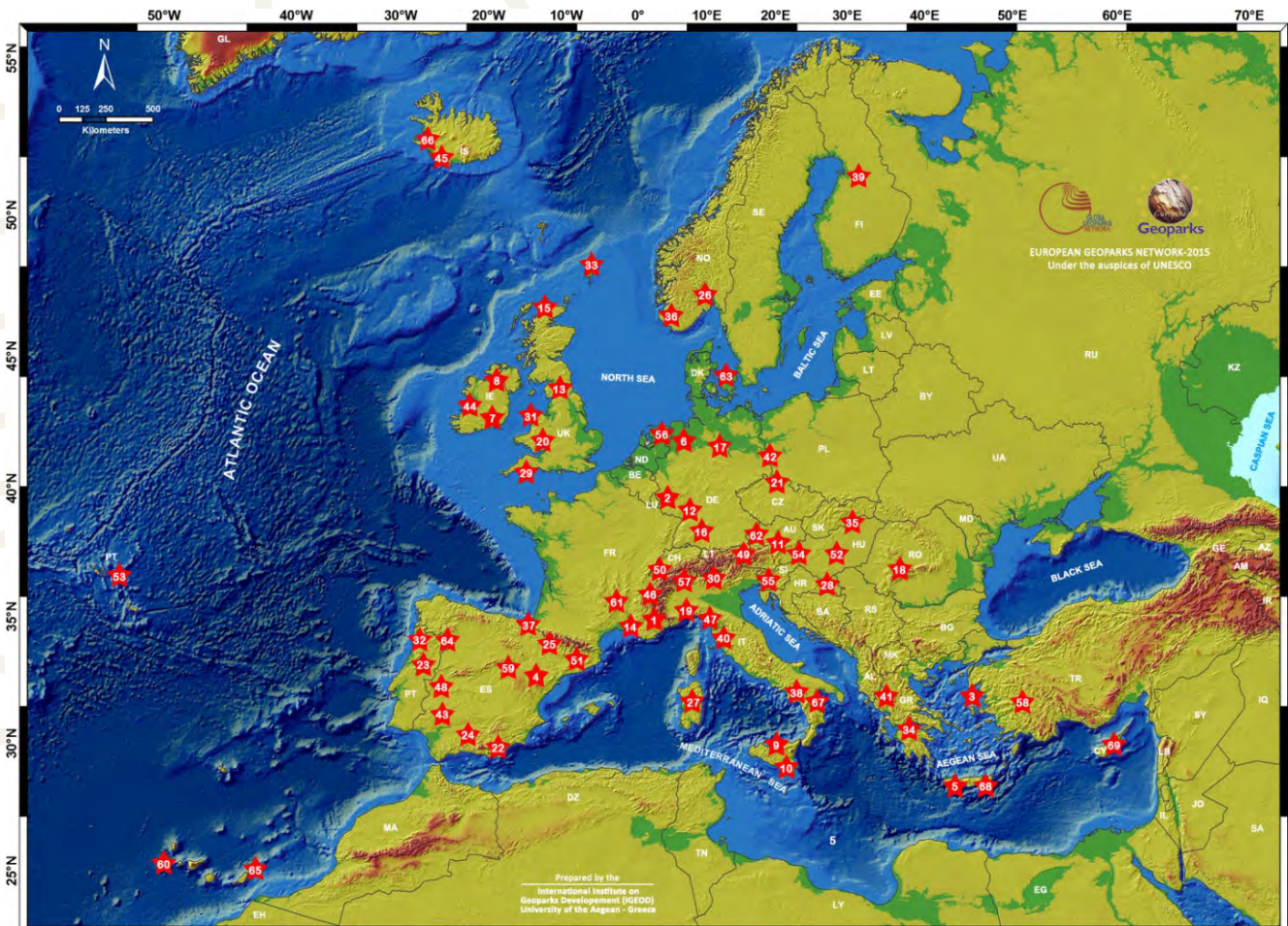
Intrusive rocks

- Basic rocks, aplites and pegmatites
- Quartz

Tectonic

- Main faults

Geoparks: Geology with human face





Edition - **Geopark Naturtejo, 2017**
Coordination - **Carlos Neto de Carvalho**
Texts - **Carlos Neto de Carvalho, Joana Rodrigues,
Manuela Catana, Municipality of Idanha-a-Nova**
Photos - **Carlos Neto de Carvalho, Manuela Catana,**
Clipping - **Alice Marcelo e Carla Jacinto**
Design - **Layer [Design and Print Studio]**
Translation - **Carla Jacinto**
Editing - **Joana Rodrigues**



CRUZIANA

GEOPARK NATURTEJO DA MESETA MERIDIONAL-EUROPEAN AND GLOBAL GEOPARK MONTHLY REPORT

www.geoparknaturtejo.com