



In this issue:

Geopark's Delegation participates in the World Environmental Day in UNESCO
Bergstrasse-Odenwald Geopark
Mines Site Partners' Annual Meeting
Geopark and Partners in the National Fair of Agriculture in Santarém
Salva a Terra: Another environmental edition
...and more!

CRUZIANA

GEOPARK NATURTEJO DA MESETA MERIDIONAL - UNESCO GLOBAL GEOPARK - E-MAGAZINE



Organização das Nações Unidas para a Educação, Ciência e Cultura



Naturtejo da Meseta Meridional Geoparque Mundial da UNESCO



2017 INTERNATIONAL YEAR OF SUSTAINABLE TOURISM FOR DEVELOPMENT Gold Partner



GEO-stories of our places and people: Salvaterra do Extremo

Erges, the last wild river in Portugal!

At this end of Portugal, with almost wild landscapes due to slightly human activity, a clear river flows with choppy waters during the few rainy months, barely noticed during the hot summer. It's a beautiful valley the Erge's. It is also a border between two countries, two cultures that here are not so different actually. One of the oldest borders between Portugal and the kingdoms of Spain, meaning it is one of the oldest in Europe. It is also a valley with such a rich geological history, made of the oldest rocks of sedimentary origin in Portugal. In these black shale, sometimes almost bluish, the oldest fossil remains were found. Old bacteria, phytoplankton from a deep ocean gave rise to these rocks. Not very far, we can find rock pieces enclosed on shale which suggests to the geologists the moving icebergs, testifying the thaw on the planet after the most impressive glaciation ever seen. As currently thought this glaciation triggered the emergence of multicellular life. The thick waters flow between gushes and old dams, revealing all this wealth and feeding another with bushes and holm oak trees with abundant birds. A black rock unveils another story, almost 500 million years old, but also unthinkable in this current landscape. This dolerite matches a duct where magma eventually ascended to a shallow ocean which extended by the separated continent Avalonia from super Gondwana. Nearly at the same time, in this Rheic Ocean the trilobites roamed and left their traces in Penha Garcia. In the most stunning part of its course, the Erges River gets into the granite of Salvaterra do Extremo carving a breathtaking river canyon for over 2km between amazing rocks. Salto da Cabra is one of those rocks, where the griffon vulture or the Boneli's flight fills the unique canyon. These walls are perhaps one of the best outcrops to analyze the old Variscan plutonite granite, looking into a giant magma ball settled several kilometres deep into the Earth's crust, but now crystallized and exposed by the continuous erosive Erges River stubbornness, breaking each of watersheds, shaping each "cantchal", drilling the large potholes forming the naked riverbed. A little downstream another igneous rock crops out at the mouth of S. Domingos stream, the Tonalite of Batão de Baixo, here known as "Black Rocks", attesting the geodiversity of Salvaterra do Extremo.

This entire geological world is worth to behold from a rock perspective down into "Moinho do Seco". This is such an amazing place to visit in the year's switch when Erges flow vigorous and frantic filling the canyon with a stunning sound. Atop, gazing for thousand years, as if ready to love or annihilate each other, are the medieval castles of Peñafiel and Salvaterra do Extremo. For those coming from Spain, Salvaterra is invincible by the front and by the Northern barrier. Deep down the cliffs, in the puffed Erges, the Ribeira Fountain is almost the only responsible for quench the thirst of many countless local generations.

From here starts slope up a precious pavement towards the village. Entering the village we faced a true architectural gem resulting from numerous destructions and reconstructions over its military past. Savaterra's past is old, its castle was built in the birth of the nationality and the village achieved some projection due its geostrategic importance.



Organização das Nações Unidas para a Educação, Ciência e Cultura



Naturtejo da Meseta Meridional Geoparque Mundial da UNESCO



2017 INTERNATIONAL YEAR OF SUSTAINABLE TOURISM FOR DEVELOPMENT
Gold Partner



Geoparks

GEO-stories of our places and peoples: Salvaterra do Extremo

Today almost nothing remains from the castle and 170 people live here. Two distinct areas highlight for their valuable heritage build over centuries of almost uninterrupted fights: the Mother Church Square, from 16th century and the Mercy Church; the Pillory Square, of Manueline style with the Chamber House and the Clock Tower. But Salvaterra is full of hidden corners, with unexpected beauty, panoramic beauty and quiet views: the splendid pigsty set in Northeast, a small iron age-like village dedicated to the loyal fellow, the pig; the "Lord of the Stone" Chapel and the Devesa Fountain with an aqueduct; the old ghostly cemetery; the medieval tower in the Erges' gorge, remembering other fears. And then, there is a whole endangered dry stone heritage, Salvaterra do Extremo's alleys, spread for 81,13km², between secular cork trees and holm oaks, where we walk down into "Tapada do Gorroal" to find traces of an ancient Roman gold mine, or to "Currais da Arvéola", where Salvaterra's mining area was set up in the 19th century searching for lead and later tin and tungsten, or go towards Toulões to discover a magnificent cork-oaks and holm oaks "Montado".

Salvaterra do Extremo is an endangered village. Yet its rarity is relevant for the future. Next door to the International Tejo Biosphere Reserve, Erges' valley is a sanctuary for bird lovers. The Vultures Trail brings paths and alley's lovers to find some charming corners; sometimes we cross with former smugglers, because this land is made of ancient smuggling memories, some joyful, and some emotional in an ancient landscape in the 20th century. Today, these memories bond both sides of the border, for an annual celebration that draw a crowd. Erges river has great potential for white water sports, for the moment only explored once a year in a big Iberian celebration. But the passion challenge is downstream from Idanha's ford... Traditional cuisine lovers need to discover "Bodo de Salvaterra", an annual celebration to pledge payment against a plague of grasshoppers happened in 1876. For more spiritual lovers, Salvaterra do Extremo is rich in ancient Pascal celebrations. For Nature lovers, "Salva a Terra" Festival is increasingly gaining visibility as result of volunteers' passion. Money raised helps the wild birds' recovery project by Quercus – National Association for Environment Preservation. During some days in July life in the village triples, with Portuguese music and environmental activities and of course, some dives in the Erges.

In a land full of variety, it is incredible there is only one place to stay for the night. Casa do Forno exists for almost 10 years, a geo-resort taking advantage of the best this land offers to develop geotourist programmes and activities for their customers. It's an outstanding project with quality and affection. But in a land capable to generate so many passions one must search for a greater diversity of permanent solutions. There are many alleys to take care of and trails to open, an angry river which makes an excellent white water course in winter and spring, the cultural smuggling trails going though the border and a huge sky full of large sized birds where a ballooning festival might should happen.

Between the two medieval challenging sentinels, just imagine crossing Erges Gorge across the biggest suspended bridge in the world. Perhaps Salvaterra could be free from extinction...



Organização
das Nações Unidas
para a Educação,
Ciência e Cultura



Naturtejo da Meseta Meridional
Geoparque
Mundial da
UNESCO



Geo-histórias dos nossos lugares e gentes: Salvaterra do Extremo

Bibliography:

- RIBEIRO, M.L. & PALACIOS, T. (1998) – Aspectos geoquímicos dos granitos de Salvaterra do Extremo. Comunicações do Instituto Geológico e Mineiro, 84(1): B27-30.
- RIBEIRO, M.L. & SEQUEIRA, A.J.D. (1997) – Complexo filoniano de Salvaterra do Extremo. Comunicações do Instituto Geológico e Mineiro, 83: 143-150.
- RODRIGUES, J.C.; NETO DE CARVALHO, C. & GERALDES, J. (2008) – Património Geológico de Salvaterra do Extremo. Açafa On-line, 1: 1-17.
- RODRIGUES, R.O. & MOREIRA, J.M.R.V. (2013) – Salvaterra do Extremo. A Terra que nos viu nascer. Câmara Municipal de Idanha-a-Nova, 425 pp.
- ROMÃO, J. (1994) – Litoestratigrafia e tectónica do Grupo das Beiras (Complexo Xisto-Grauváquico, CXG) entre o rio Pônsul e rio Erges, Beira Baixa (Portugal). Boletim Geológico y Minero, 105-6: 521-530.
- ROVISCO, E. (2009) – Práticas e discursos sobre contrabando na raia do concelho de Idanha-a-Nova. In: Freire, D., Rovisco, E. & Fonseca, I. (eds.), Contrabando na fronteira Luso-Espanhola: práticas, memórias e patrimónios. Edições Nelson de Matos, pp. 89-128.
- SEQUEIRA, A.J.D. (2011) – Microfósseis do Grupo das Beiras (Monfortinho-Salaterra do Extremo, Beira Baixa, Portugal Central). Comunicações Geológicas, 98, 55-60.
- SEQUEIRA, A.J.D., PROENÇA CUNHA, P. & RIBEIRO, M.L. (1999) – Carta Geológica de Portugal à escala 1/50000, Notícia Explicativa da Folha 25-B Salvaterra do Extremo. Instituto Geológico e Mineiro.

Cover: (Projecto Objectiva: Geopark)

The editor
Carlos Neto de Carvalho
Scientific coordinator
Geologist



MONTHLY ACTIVITIES



RESEARCH OF NATIONAL CURRICULA IN NATURAL SCIENCE TEACHING IN PORTUGAL, NORWAY AND SLOVENIA

Results of analyse with the guidelines

June – E-book publishing “Search for national curricula in Natural Science teaching in Portugal, Norway and Slovenia – Analysis’ Results with guidelines”. The main result of the activities in Output 1 of ESTEAM Project, in which Naturtejo Geopark – UNESCO Global Geopark and the School Group from Idanha-a-Nova are the Portuguese partners, was an E-book for Natural Sciences’ teachers and 3rd grade students. This E-book serves as a basis for future activities and to create an innovative teaching method that includes an app combined with outdoor educational activities. The E-Book content is based on the research of Natural Sciences’ curricula for 3rd grade of primary school. Students, teachers and future Natural Sciences teachers participated in this research. The study included an overall analysis about Natural Sciences’ curricula and an extensive online research involving 433 students, 287 teachers and 63 future teachers from different EU countries. Based on the final results, on guidelines and indicators, the goal was to develop more efficient means to achieve learning purposes and was presented as more effective way to teach Natural Sciences. The main idea behind this E-book is to use it as teaching support to teachers when they need a new approach to prepare classes, or just to learn more about new educational practices and innovative teaching approaches. The E-Book was created in 4 languages, Portuguese, Slovenian, Norwegian and English, and is available in the ESTEAM Project Website in: <http://esteamproject.wixsite.com/mysite/por-2> ((Portuguese version) and <http://esteamproject.wixsite.com/mysite/intellectual-outputs> (English version).



1 June – Representatives from Gyeonggi Government for a short visit in the Geopark

1 June - Representatives from Gyeonggi Government for a short visit in the Geopark. The South Korean representatives made a short visit to Naturtejo Geopark aiming to gather information to develop a possible appliance to UNESCO. After a short meeting with Armindo Jacinto, President of Naturtejo Geopark, the group visited Monsanto's Geomonument accompanied by a tourism technician. This visit was organized by the French embassy of South Korea.

1 June - World Children's Day in Penamacor. Naturtejo Geopark joins another World Children's Day celebration, this time in Penamacor. Children are a "scarce asset" in the territory and deserve a celebration with a joyful day. Mariana Vilas Boas represented Naturtejo Geopark for these celebrations.



2 to 4 June - Geopark as an example in International Conference "Thermal spa and Regional Development". Multiuse auditorium from Nelas hosted specialists in health, economics, thermal spa and regional development to discuss Thermal Spa in Portugal, as a driving factor for local and regional development. They discussed urgent measures to be taken within the Economics, Health and Tourism departments to encourage thermal spa as a differentiating regional factor, mainly in regions of low population density. Joana Rodrigues presented "Hydrogeological Heritage in Naturtejo Geopark: Strategies for Sustainable Development".



2 to 10 June - Geopark's Partners in the National Agriculture Fair. Naturtejo Geopark participated in the National Agriculture Fair in Santarém, one of the most important events of the sector in the country, together with the Municipality of Idanha-a-Nova. Carla Jacinto represented the Geopark, publicising all the natural resources in the territory, Touristic Programmes, innovative green projects and some Geoproducts, as the Geowine, Aromas do Valado and Geoliqueurs – Acha Doce Licores, who also participated with their own booth.

3 to 4 June - Club Fiat's Annual meeting. A group of 30 from Fiat Club chose Geopark for their annual meeting. The group was guided by Rui Nunes to Penha Garcia, Monsanto and Idanha-a-Velha.



4 to 5 June - International Environment Day celebrated in partnership between UNESCO Bergstrasse-Odenwald Geopark and UNESCO World Heritage Site of Messel Pit.

On the International Environment Day weekend, some representatives of the Parish of Toulões, in the Municipality of Idanha-a-Nova, travelled to Germany to UNESCO Bergstrasse-Odenwald Wold Geopark. This visit aimed the strengthening of cultural relations between both Municipalities in order to develop a cooperation project. Representing this Portuguese region was the President of the Municipality of Idanha-a-Nova Armindo Jacinto accompanied by the Parish President of Toulões José Torres Brito, the Management Superior School Board Ana Rita Garcia and Sara Filipe, Carlos Neto de Carvalho representing Naturtejo UG Geopark, Alice Marcelo, António Marcelo and Carla Jacinto representing Naturtejo and Toulões where they have their origins, and also some partner companies as Aromas do Valado, represented by Jaime Barata and Geocakes, with Raquel and Mário Ramos. Toulões was promoted in Lorsch, near Frankfurt, known as World Heritage and for its Peony Festival near a garden with more than 140 species and varieties of this plant from all over the world. For this festival Toulões presented itself as "Peony Village of Portugal" for its annual "Rosa-Albardeira Festival", an endemic peony species only found in the mountains of the Centre and Southern Iberian Peninsula and, although rare thrives in Serra da Murracha, near Toulões.

In the local booths dedicated to Toulões and Idanha, beyond Naturtejo Geopark's territory promotion, the group showcased local handicraft and the companies presented their products, with highlight to "Sweet Rosas-Albardeira" cookies from Geocakes and some wellbeing aromatic products from Aromas do Valado. Carlos Neto de Carvalho presented Toulões' Heritage and local activities to the local public in the Municipal Auditorium. Armindo Jacinto was received by the Burgmeister of Lorsch in the world Peony garden where both planted *Peonia broteroi*, or Rosa-Albardeira, brought from Toulões. Next year Toulões will receive an Entourage from this German city in their Rosa Albardeira Festival, contributing to its cultural enrichment establishing basis to more cooperation between local companies and to develop an intercultural project based on peony aiming to qualify the supply of tourism products in Toulões.

The next day, the Portuguese entourage was received in the famous Messel Pit, famous as World Heritage Site for its paleontological richness. Here a cooking workshop "Tasting Time in Naturtejo Geopark" was held by Raquel and Mário Ramos who prepared it in the Visitors Center facilities, a commented tasting by Carlos Neto de Carvalho, who introduced each flavour with a significant episode of the landscape history in Naturtejo Geopark. This initiative to promote the region and local companies' internationalisation was supported by The Municipal Centre for Culture and Development of Idanha-a-Nova, through Programa Centro 2020.



7 June – 2nd Field Trip of Rivers Project in Marechal Carmona's Dam, in Idanha-a-Nova. 42 6th and 8th grade students from School EB2,3/S José Silvestre Ribeiro participated in the Rivers Project. For this activity of monitoring the river, students could watch some macroinvertebrate animals and understood the water conditions. Students were accompanied by two teachers and the monitors were Manuela Catana and Arlindo Cardoso.



8 and 9 June – Annual Meeting of Mines Site Partners. As usual Portugal's Geological and Mines Sites Partners, currently 31, from all over the country gathered in Mértola at Minas de São Domingos to evaluate and discuss the strategy and annual activities, with a conference within social and environmental rehabilitation of old mines, mining tourism and local development, workshops about science communication, memory and documental heritage.

Highlight that from all visiting points available online, the Ichnological Park of Penha Garcia, in Naturtejo Geopark, is the second most visited online.

It was acknowledged the high visibility the Mines Site Partners Week, where Naturtejo Geopark has always took presence and also given the platform a big highlight. New partners were presented, as well as new infrastructures and new exhibitions both permanent as temporary and itinerant. Naturtejo Geopark and Grutas da Moeda presented their project "Building a regional partnership" as an example and starting point to new partnerships. Naturtejo Geopark also participated in the workshop "Oral Memories and Identity", together with the Mining Museum from São Pedro da Cova and the Interpretation Centre of Minas da Borralha where intangible heritage experiences were shared, namely the project developed with the Mining Memory of Idanha-a-Nova. The Partners visited the village of S. Domingos, the Miner's House, the old Mining pit, the old railway workshops and Achada do Gamo. A Photographic Exhibition "Coal of Steel" about Pejão's Miners, within the 6th S. Domingos Mining Meeting was taking place in parallel. The State Secretary for Energy Jorge Seguro Sanches, the Director General of Energy and Geology, Mário Guedes and the Board of Mining Development Company Rui da Silva Rodrigues and Pita Ameixa opened the event with speeches. Eddy Chambino and Joana Rodrigues represented Naturtejo Geopark.



10 and 11 June – Festival Sport in Nature closes Landscape Festival 2017. Zebreira, in the Municipality of Idanha-a-Nova received thousands of visitors for two days of fun and leisure, for the 5th Festival Sport in Nature. With adventurous and quieter proposals, the Festival had lots of activities. To Armindo Jacinto, president of the Municipality of Idanha-a-Nova “Zebreira is the starting point to numerous sports activities in nature, from impressive biodiversity of Tejo International – UNESCO Biosphere Reserve - observation to horse riding, cycling, hunting and equestrian competitions”. The Festival also had a walking trail “Discovering Nature”, organized by the Tourism Office. The goal is to promote local products to boost the local economy, create wealth and employment. Daniel Fonseca, president of the Parish of Zebreira and Segura, highlights the support by several local communities, thanking their contribution for the 5th Festival Sport in Nature's success. This event closed Naturtejo Geopark's Landscape Festival.

10 and 11 June – Lamb Flavours Festival in Escalos de Baixo. Lamb was the star for this weekend's Lamb Flavours Festival in Escalos de Baixo. The festival had several stands with handicrafts, local products, taverns and restaurants. Besides traditional lamb there was a walking trail and motorbikes ride. The Lamb Flavours Festival is organized by the Parish of Escalos de Baixo and Mata, supported by the Municipality of Castelo Branco, as well as Naturtejo Geopark.

10 June – Visit to Idanha-a-Velha. Rui Nunes guided 41 visitors from Viana do Castelo to Idanha-a-Velha.

10 June – UBI Teachers visit Naturtejo Geopark. 27 teachers from the University of Beira Interior visited the territory for walk a part of PR6-Urban Geology and Archaeology of Ródão, a boat tour in Tejo to the Nature Monument of Portas de Ródão followed by a nice lunch in Restaurante Vale Mourão and finishing with a visit to the Geomonument Portas de Almourão. These activities were accompanied by Nuno Coelho, from Incentivos Outdoor Company.



13 June – Spiritual Twinning between Naturtejo Geopark and Villuercas-Ibores-Jara UNESCO Geopark. In a sunny afternoon, representatives from the Province of Cáceres, headed by the president Rosário Martín, and Villuercas UNESCO Geopark coordinator José María Barrera and Javier Lopez Caballero, as well as the Mayor of Guadalupe and local authorities headed by Armindo Jacinto, President of the Municipality of Idanha-a-Nova and President of Naturtejo Geopark and D. Antonino Dias, Bishop of Portalegre-Castelo Branco, inaugurated Santa Maria de Guadalupe's Chapel in Penha Garcia. Virgin of Guadalupe is the patron of Extremadura and Americas, and her image is on display in the Royal Monastery of Santa Maria de Guadalupe, World Heritage in Guadalupe, in the heart of Villuercas Geopark. João Pires de Campos, priest in Penha Garcia, deceased eight years ago, and his big devotion dictated this Chapel's construction in his honour, marking the historical, cultural and socioeconomic bonds connecting this border region to its neighbour Extremadura, and particularly both Geoparks. Geology bonds these two Geoparks and the Municipality of Cáceres leads a cross-border cooperation Interreg Project named "Bridge over the Armorican Quartzite". The quartzite ridge on which Penha Garcia is based on extends to Extremadura into the heart of Villuercas Geopark. This project includes several initiatives aiming to a better connection between two territories from a touristic point of view. José Maria Barrera and Carlos Neto de Carvalho made a geological introduction and presented the project at the future museum of Penha Garcia.



13 June – Meeting between Naturtejo Geopark and Grutas da Moeda Technicians and participation in an educational visit to Grutas da Moeda. Two Naturtejo Geopark' technicians travelled to Grutas da Moeda within a partnership between the Geopark and the Moeda Caves, both partners of the Route of Portuguese Geological and Mines Site. Both share an educational programme "A Journey through the Rock Cycle in the Centre of Portugal". Naturtejo Team had the chance to know in-loco Moeda Caves in an educational visit for basic education students, visit the Naturtejo Geopark's exhibition (in the cave's lobby) "Geopark Naturtejo: the Rock that Unites us" and participate in a presentation about the Scientific Environmental Interpretation Centre. Manuela Catana and Mariana Vilas Boas represented Naturtejo Geopark and were received by Danilo Guimarães and other team member in Grutas da Moeda caves.

14 June - the 9th Polytechnic Forum bring Hospitality and Tourism. The Polytechnic Institute of Castelo Branco, and the Management School of Idanha-a-Nova organized the 9th Polytechnic Forum at the GeoHotel in Monsanto. Here the guests and participants from several Schools in the country may have reflected on present conditions and future requirements of Tourism. Carlos Neto de Carvalho was invited to talk about the work conducted in the UNESCO Naturtejo Geopark's territory.



15 June - Penha Garcia - Extreme Trails. Sporting Clube de Portugal of Penha Garcia carried out another "Extreme Trails" edition. This initiative included a guided walk through the Fossils Trail, in the morning and climbing and rappel activities in the afternoon, in the cliffs of the Ichnological Park of Penha Garcia. This activity was supported by the Municipality of Idanha-a-Nova, Parish of Penha Garcia and Naturtejo Geopark – UNESCO Global Geopark, and was sponsored by Shareballons.



17 and 18 June - Traditional Medicines Conference in Penha Garcia. The 3rd Traditional Medicines Conference in Penha Garcia allowed researchers, local and national specialists to discuss the connection between health, nature and usages, customs and traditions. "The event keeps growing year after year for its quality programme", said Armindo Jacinto during the Conference, which included the 1st Traditional Show "The Bread". The President of the Municipality of Idanha-a-Nova expressed his satisfaction for "the main role displayed by the municipality in areas related to natural health, environment and organic agriculture". All the work done throughout the year is sustained by a rich natural and cultural heritage and bootied by experts and local structures as Centro Documental Raiano, an innovative space with environmental and alternative resources. "We wish to assert ourselves as the "Most Organic Municipality", where technological innovation serves tradition producing high quality food. It is the bread's case, approached during the Conference for its connection to health", said Armindo Jacinto.

José Medeiros and Mário Pissarra, mentors for the event, drew a diversified program that included lectures, workshops and myths and rituals recreations, in fascinating spaces such as Gruta da Lapa cove. Lectures took place in the future Museum House of Padre João, in an overflowed room. The Municipality of Idanha-a-Nova, the Parish of Penha Garcia and the Folklore Group of Penha Garcia organized the event, supported by Naturtejo Geopark.



18 to 21 June - Participation in the UNESCO Sobrarbe Geopark revalidation. Pyrenees' Geopark integrated the European Global Geopark Network in the same year Naturtejo Geopark did, 2006. Now it goes through a revalidation process as a geopark, after 4 years. Carlos Neto de Carvalho was one of the evaluators invited by UNESCO for this job. Along with Kristin Rangnes, vice-coordinator of European Geoparks Network, they analyze the development of structural new projects in Sobrarbe Geopark as a local entity increasingly dynamic on promoting Geological Heritage, based on a solid and ongoing scientific activity. Evaluators made a long foray into the National Park of Ordesa Valley – Monte Perdido.



23 to 25 June - Geopark in Fair Flavours of Tejo in Vila Velha de Ródão. For 3 days, Vila Velha de Ródão attracted about 120 high quality exhibitors highlighting the best products in the region representing several activities, services and products related to Tejo river.

In the opening, on June 26th, Luís Pereira, president of the Municipality of Vila Velha de Ródão, said "Fair Flavours of Tejo is today a space to express our strategic vision for the development of the territory, the ability and value of our economic agents who, in the past years, have come here to invest, generating wealth and creating jobs". This year, for the first time there was a stand representing the tourist investment focusing on the existing offer available in the municipality.

More than 32 thousand people visited the Fair during 3 days in one of the best editions ever surpassing all the expectations. Naturtejo Geopark attended with a promotional stand and was represented by Alice Marcelo.



22 to 25 June – Save the Earth Festival- the only Music Eco Festival in the region. Save the Earth Ecofestival took place in Salvaterra do Extremo and was attended by more than 150 artists. The revenues reverted 100% to the Wild Animal Recovery Centre in Castelo Branco (CERAS). The biennial event, this year was the 4th edition, is organized by the environmental Association Quercus, Union of parishes of Monfortinho and Salvaterra do Extremo and the Municipality of Idanha-a-Nova, in Castelo Branco's District, with the support of Naturtejo Geopark. The revenues reverted 100% to (CERAS), what make this event its main patron. With the 2015 Edition we raised funds to recover 400 animals. The festival consists in several activities ranging from concerts, workshops, interpretative trails, wildlife observation, conferences, documentary films and diverse entertainment. Save the Earth is a 100% 'pro-bono' Eco Festival, in which the entire organization, artists, trainers, guides and other staff work voluntarily to preserve something that belong to all of us, biodiversity. In addition to the concerts in four different stages, there was drama and animation and an intervention of the artist, Bordalo II and an exhibition of ' Plasticus Maritimus '. The mornings of this four days festival began with yoga activities, meditative concerts and several workshops. We want this Festival to be an exchange and awareness-raising meeting regarding nature conservation, so its construction and build up follows the best environmental practices. The 2013 edition won the award for the most sustainable festival in Portugal Festival Awards, an award that recognized the organization efforts.

IMPACT OF GEOPARK IN MEDIA



Newspapers & www

25 to 31 May – (Visão Green Edition) – Untouched Beira Baixa

Junho (VortexMag.net) – 10 gardens to visit in Portugal

June (Raiano) – Fiat Club in Tour in Idanha-a-Nova

June (Raiano) – Flower Festival created a coloured and imaginative world

June (Raiano) – Penha Garcia – Extreme Day on 15 June

June (Raiano) – Students from Idanha-a-Nova participated in Geoconvivência 2017 in Spain

1 June (Abarca) – Roman shadow in Arneiro's rocks

1 June (Weinheimer Nachrichten) – Portuguese Peony arrived

6 June (Echo) – Cooked Fossils in Grube Messel

18 June (VortexMag.net) – 10 Most picturesque villages of Portugal

25 June (VortexMag.net) – 10 great road trips in Portugal

SCIENTIFIC CONTRIBUTIONS FOR THE GEO PARK AND THE GEOSCIENCES



- FIGUEIREDO, S., CUNHA, P.P., NETO DE CARVALHO, C. & SOUSA, F. - Jazidas com indústrias paleolíticas associadas a fósseis de *Paleoloxodon antiquus*, no Plistocénico do Baixo Tejo. In Figueiredo, S. & Pimenta, R. (eds.), Livro de Resumos das IV Jornadas de Arqueologia do Vale do Tejo, Golegã: 9-10.

PROMOTION FOR THE GENERAL PUBLIC



- Rosa Albardeira postcard within Rosa Albardeira Festival in Toulões
- Club União Idanhense postcards – 100 years

FESTIVAL DA PAISAGEM

Semana Europeia dos Geoparques
24 de Maio a 11 de Junho 2017

PROVERE CENTRO 2020 natura2000 natura2000 natura2000 natura2000 natura2000

<p>24 maio Geoconvivência 2017 Local: Colégio Público Montellano, Berzocana, Espanha Organização: CRA Montellano, Geoparque Villacayas-Borres-Java Mundial da UNESCO, Geopark Naturtejo Mundial da UNESCO, ESCA de José Silvestre Ribeiro de Idanha-a-Nova</p>	<p>26 a 28 maio VI Festival das Flores Local: Aldeia de Santa Margarida - Idanha-a-Nova Organização: Junta de Freguesia da Aldeia de Santa Margarida, Município de Idanha-a-Nova</p>
<p>27 maio GeoRota do Orvalho Local: Orvalho - Oitavas Organização: Junta de Freguesia de Orvalho, Geopark Naturtejo Mundial da UNESCO</p>	<p>28 maio Caminhada "Conhecer o Geossítio Serra d'Opa e o Castro de Sortelha Velha" Local: Vale da Senhora da Póvoa - Penamacor Organização: Município de Penamacor, Rotes & Razes, Junta de Freguesia de Vale da Gra. da Póvoa, Junta de Freguesia de Casteloão, Geopark Naturtejo Mundial da UNESCO</p>
<p>29 e 30 maio Excursão de Geologia Aplicada pelo Geopark Naturtejo Local: Castelo Branco e Proença-a-Nova Organização: Geopark Naturtejo Mundial da UNESCO, Departamento de Geologia da Universidade de Lisboa, Centro Ciência Viva da Floresta</p>	<p>30 maio Comemorações do Dia do Geólogo nas Portas de Almourão Local: Sobral Femandi, Proença-a-Nova Organização: Centro de Ciência Viva da Floresta, Município de Proença-a-Nova, Naturtejo</p>
<p>4 junho Toulões no Festival da Peónia Local: Lorsch, Alemanha Organização: Geoparque Bergtalasse / Odewald, Naturtejo</p>	<p>5 junho Comemorações do Dia Mundial do Ambiente - Workshop "Tasting Time" do Geopark Naturtejo Local: Museu do Mezal / Património da Humanidade Organização: Welterbe - Grupo Mezal (GIM) Alemanha, Geopark Naturtejo Mundial da UNESCO</p>
<p>6 Junho Exposição "O Ouro - da Formação do Universo à Conquista do Espaço" Local: Centro de Ciência Viva da Floresta - Proença-a-Nova Organização: CCV-Floresta, Município de Proença-a-Nova, Geopark Naturtejo Mundial da UNESCO</p>	<p>10 a 11 junho V Festival de Desporto na Natureza Local: Zibreira - Idanha-a-Nova Organização: União das Freguesias da Zibreira e Segura, Município de Idanha-a-Nova</p>

GEOPARK NATURTEJO

A ROCHA QUE NOS UNE

8 Abr. a 29 Out. de 2017
Grotas da Moeda
S. Mamede

naturtejo ICICA

Ouro

DA FORMAÇÃO DO UNIVERSO À CONQUISTA DO ESPAÇO

EXPOSIÇÃO
Geopark Naturtejo
Geoparque Mundial da UNESCO

Proença-a-Nova
Centro Ciência Viva da Floresta
21 de julho a 29 de outubro

2017

naturtejo CENTRO CIÊNCIA VIVA DA FLORESTA ciência viva interreg

PROMOTION FOR THE GENERAL PUBLIC



SEMANAS DE ATIVIDADES: 3 a 7 de julho, 10 a 14 de julho, 17 a 21 de julho, 24 a 28 de julho, 7 a 11 de agosto, 14 a 18 de agosto, 21 a 25 de agosto, 28 de agosto a 1 de setembro

academia explorar e aprender 2017 PENAMACOR

formação em TIC | jogos de orientação
tiro com arco, escalada, rappel e slide
formação em fotografia | canoagem e stand up paddle
exploração da natureza

Para crianças e jovens dos 6 aos 16 anos

INSCRIÇÕES

DATA LIMITE PARA INSCRIÇÕES: 16 de julho
Data limite de inscrições em agosto: 14 de julho

INSCRIÇÃO INCLUI: alimentação, seguro e monitoria cidadãncados

GABINETE DE AÇÃO SOCIAL E EDUCAÇÃO DO MUNICÍPIO DE PENAMACOR
Largo Júlio Rodrigues da Silva / 6090 - 545 Penamacor / Tel: 277 394 040 / gaba.social@cm-penamacor.pt

XIII FESTIVAL DA MELANCIA DO LADOEIRO (IDANHA-A-NOVA)

15/16 JULHO 2017

15 JULHO

- 17h00 > Abertura oficial do XIII Festival da Melancia
 - > Provas de sumo, competas e outras iguarias de melancia
 - > Apresentação do livro de "António Maria Romeiro Carvalho"
 - > Toponímia do Concelho de Idanha a Nova
 - > Grupo de Bombos do Ladoeiro Baía dos Sonhos
 - > Alegres das concertinas
- 17h30 > Passagem e atribuição do prémio da Melancia mais pesada BDC
- > Grupo de percussão TOK' Avacalhar
- 18h00 > Início do XI Concurso de Escultura em Melancia
 - Inscrições: 277202900 - 27727232 - 967286683
 - Prémios: 1º - 250€ | 2º - 150€ | 3º - 80€
- 20h00 > Atuação de grupo de sevillhanas
- 21h30 > Grande Noite de Fados com a conceituada Fadista **Cidália Moreira, Luís Capão e Filipa Carvalho**
- 23h00 > Atuação dos conhecidos "Minhotos Marotos"

16 JULHO

- 10h30 > Colóquio sobre a Melancia e seus Benefícios
- 12h00 > Abertura do Festival
 - > Grupos de Zés Pereritas "Os Maravilhas"
 - > Pedritonewheel - Hombrie orquestra
 - > Grupo Feminino de Gaitas "Girafotes"
 - > Concertinas da Carapalha
- 19h00 > Rancho Folclórico da ACDL - Ladoeiro
- > Rancho Folclórico as Cabacinhas de Santiago - Viseu
- > Rancho Folclórico de Penha Garcia
- > Grupo Etnográfico Danças e Cantares do Minho
- 21h00 > Atuação do Grupo de música popular "7 Saías"

FEIRA DE PRODUTOS REGIONAIS, TASCULINHAS E RESTAURANTES

VENDA DE MELANCIA E MERCADO DE HORTICOLAS E FRUTICOLAS

FEIRA DE MELANCIA E MERCADO DE HORTICOLAS E FRUTICOLAS

QUINTA PEDAGÓGICA COM ANIMAÇÃO PARA CRIANÇAS

LIVE COOKING COM MELANCIA

EXPOSIÇÃO DE MELANCIA

PRIMEIRA PRINCIPAIS MELANCIA

ANIMAÇÃO TERMAL

RANCHO FOLFLÓRICO DE MONSANTO

19 DE JULHO DE 2017
RECINTO MULTIUSOS
TERMAS DE MONFORTINHO
21H30

MUNICÍPIO IDANHA-A-NOVA | Município de Moraleja | Centro Histórico Cultura e Desenvolvimento

XXI FEIRA RAIANA FERIA RAYANA

26 - 30 | Julho / Julio | 2017

IDANHA-A-NOVA Portugal

Co-Financiamento: Interreg Equipe Portugal

PROMOTION FOR THE GENERAL PUBLIC



Summer Campaign
17 July to 13 August 2017

Archaeological Excavations
Camp 1: 17 July to 13 August
Camp 2: 17 to 30 July
Camp 3: 30 July to 13 August
Course of Initiation to the Prehistoric Lithic Technology
19 to 21 July (12 hours)
Lectures
29 July, 4 and 11 August
Other field practices
22 July and 5 August
Field trip and discovery tour
29 July and 12 August
Contacts for further information:
+351 939 127 478 (Municipality)
alotepo@gmail.com
archaeologiafieldcamps-portugal.pt

2017
Proença-a-Nova International Archaeological Field Camp
Campo Arqueológico de Proença-a-Nova
Portugal

MESOPOTAMOS

IV ENCONTRO INTERNACIONAL DA CASA DAS CIÊNCIAS

O MAIOR ENCONTRO DE PROFESSORES DO PAÍS

EDUCAÇÃO CIENTÍFICA E DESENVOLVIMENTO ECONÓMICO

FÍSICA
BIOLOGIA
QUÍMICA
GEOLOGIA
MATEMÁTICA
Tecnologias da Informação

INTRODUÇÃO ÀS CIÊNCIAS

10 A 12 JULHO 2017

INCLUIR DE CIÊNCIAS DA UNIVERSIDADE DE LISBOA

EDULOG

Visit Naturtejo Geopark in:



www.geoparknaturtejo.com



www.facebook.com/geoparknaturtejo.mesetameridional



www.instagram.com/geopark_naturtejo/



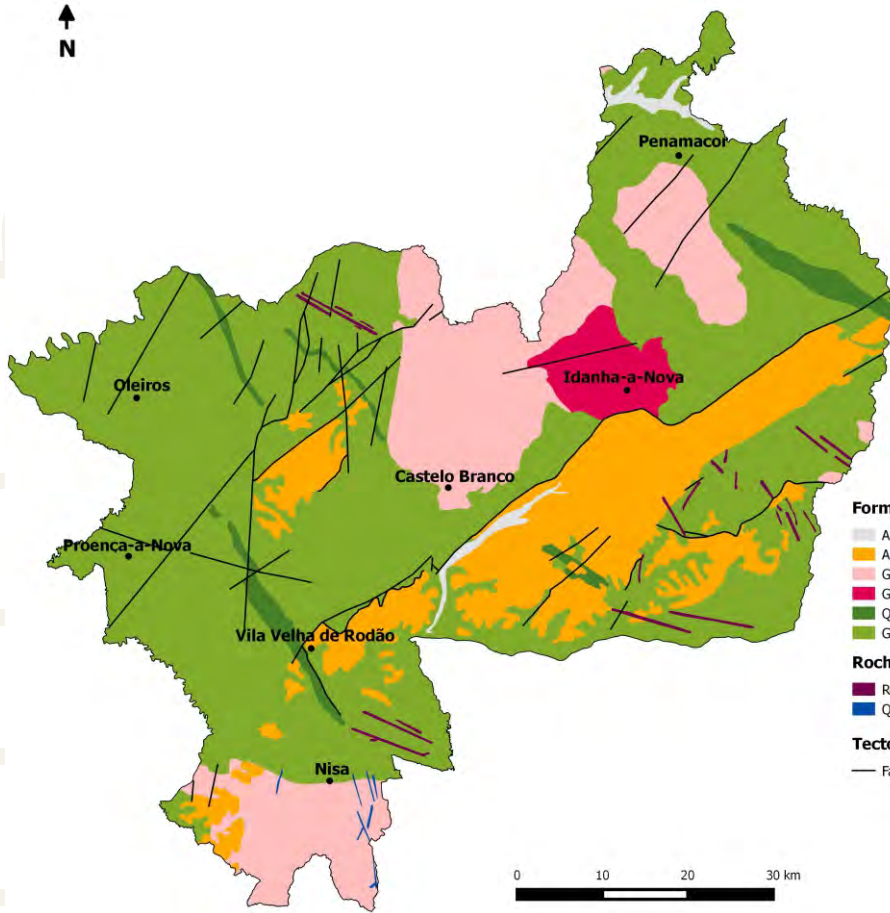
www.youtube.com/geoparknaturtejo



issuu.com/geoparknaturtejo



www.slideshare.net/geoparknaturtejomesetameridional



Formações geológicas (Ma-Milhões de anos)

- Aluviões e terraços fluviais - Plistocénico-Holocénico (1Ma-presente)
- Arcoses, brechas e conglomerados - Eocénico-Pliocénico (50-2.6Ma)
- Granitóides orogénicos tardi-Variscos (315-300Ma)
- Granodiotos pré-Variscos (480-472Ma)
- Quartzito Armónico e xistos - Ordovício-Silúrico Inferior (488-435Ma)
- Grupo das Beiras (xistos e grauvaques) - Neoproterozóico (610-542Ma)

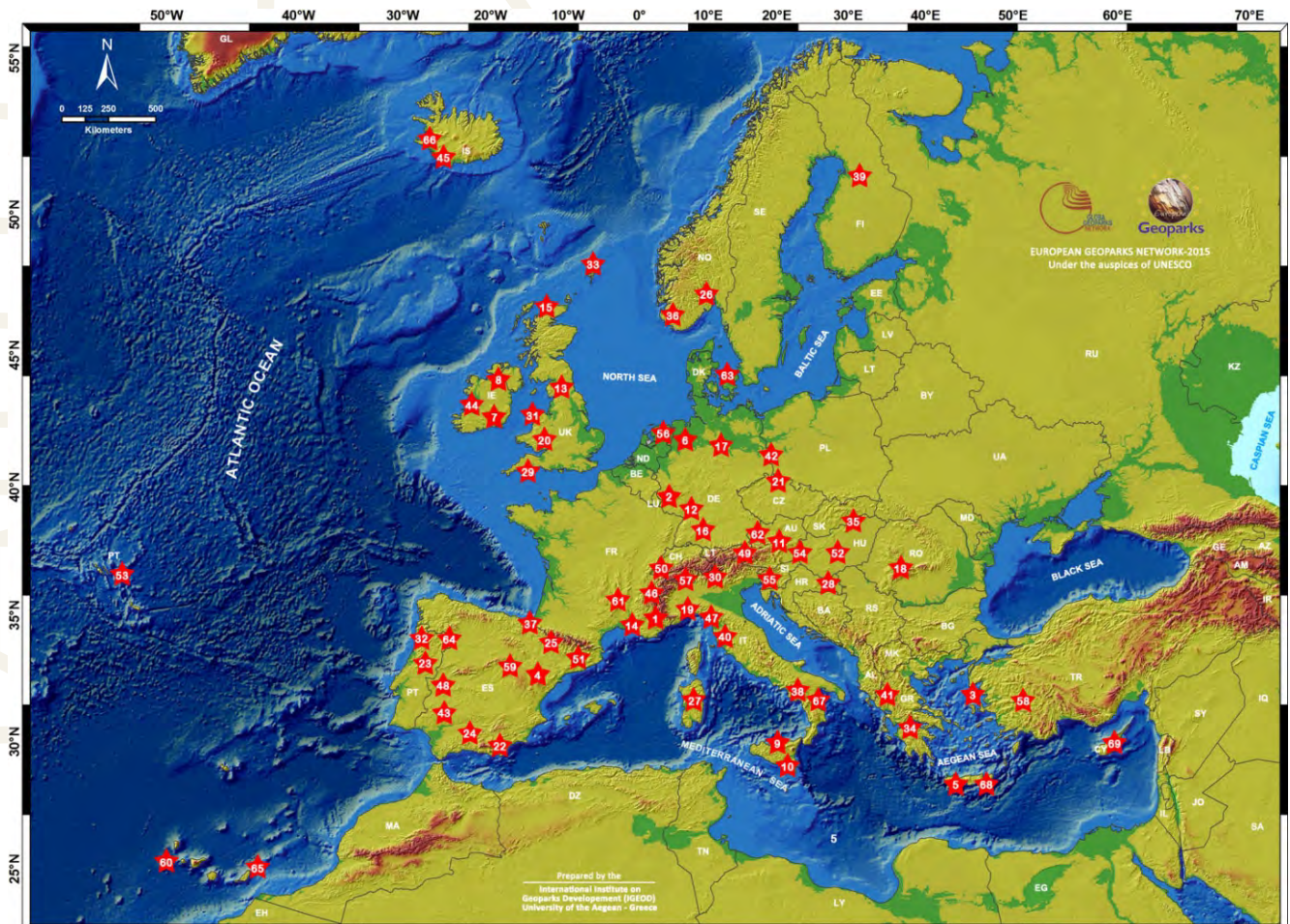
Rochas Intrusivas

- Rochas básicas, apíticas e pegmatíticas
- Quartzito

Tectónica

- Falhas principais

Geoparques: Geologia humanizada





Edition - Geopark Naturtejo, 2017
Coordination - Carlos Neto de Carvalho
Texts - Carlos Neto de Carvalho, Joana Rodrigues,
Manuela Catana, Quercus, Município de Idanha-a-Nova
Photos - Joana Rodrigues, Carlos Neto de Carvalho,
Manuela Catana, Município de Idanha-a-Nova
Clipping - Alice Marcelo and Carla Jacinto
Design - Layer [Design and Print Studio]
Translation - Carla Jacinto
Editing - Joana Rodrigues



CRUZIANA

GEOPARK NATURTEJO DA MESETA MERIDIONAL EUROPEAN AND GLOBAL GEOPARK MONTHLY REPORT

www.geoparknaturtejo.com