



In this issue:

Landscape Festival 2017 in Naturtejo Geopark
Geologist Day Celebrated in Proença-a-Nova
Naturtejo Geopark promoted in Salon de l'Immobilier et du Tourisme Portugais in Paris
Naturtejo Geopark in Iran
...and more!

CRUZIANA

GEOPARK NATURTEJO DA MESETA MERIDIONAL - UNESCO GLOBAL GEOPARK - E-MAGAZINE



Organização das Nações Unidas para a Educação, Ciência e Cultura · Naturtejo da Meseta Meridional Geoparque Mundial da UNESCO



GEO-stories of our places and people: Zebreira

Zebreira extends between the river basins of Erges, running South, and Aravil, to Southeast. Crowning the granite massif, made of rocks blackened by biotite with almost 400 million years, we can see breathtaking landscapes running into Ponsul Fault, in Idanha-a-Nova, the Monsanto Inselberg's magnificence or the quartzite ridges of Penha Garcia and in the horizon the Gardunha Mountain. Here, the High Alentejo surface, still covered by Cenozoic arkoses and conglomerates, gathering the waters from 3 parallel streams, Toulica, Toula and Aravil, through regionally-oriented faults guiding them to the Tejo river. In the opposite direction, granite is replaced by even older shales, marked by the streams in tight valleys which flowed towards Erges. The landscape is Mediterranean savannah, where plantations of cork-oak prevail, a very old and characteristic landscape from this border lands, integrated in the UNESCO Naturtejo Geopark, also designated as UNESCO World Biosphere Reserve and protected under the International Tagus Natural Park in the Aravil Stream. The privileged place to enjoy this landscape is Cabeço Vermelho, the highest point in the area, about 400m high, near the main entry road in the region. Also in Amieiro will find several dolmens and tumuli dating back to the Neolithic. In Cabeço do Mouro we find what's left of a fortified settlement from the Iron Age and in Vale da Loja we find ceramics possibly from a Roman settlement. In this vast region with 103,4km², lots of treasures are waiting to be found, in a landscape marked by thousands of years of human existence. In Herdade do Soudo community use of the land is still usual, in a vast plantation of secular cork-oak. Paths, some of Roman origin, spread from the village in a puzzling web of access to large farms and small vegetable gardens. This land has always given bread. Grazing marks the local culture as olive tree marks also the landscape. The banks of the river are pure spaces to enjoy silence or, a specialized look, enjoy the birds or the cereal steppe. From ancient times Zebreira has a pillory, protected as National Public Interest and located in front of the old city hall and jail, with its bell tower. For those staying in Zebreira there is a Country House and a public swimming pool from where you may enjoy an astonishing landscape by day or a beautiful sunset in the late afternoon. In a land waiting to be discovered, paths take us, by walk, by bike or by horse, into dimensions only achievable by some. Once a year, the Landscape Festival in Naturtejo Geopark brings to Zebreira the Sport in the Nature Festival, but conditions are favourable for sport activities during the whole year.

Who knows, maybe some day the ancient horse that gave the name to Zebreira, extinct in the XVI century, will be genetically born to life again and breed in these landscapes for the thousands of visitors and tourists' curiosity.

Bibliography:

ANTUNES, A.R. (2014) – Zebreira Terra da Raia. Estudos Arqueológicos, Históricos e Etnográficos. Açafa On-Line, 8, 624 pp.



Organização das Nações Unidas para a Educação, Ciência e Cultura · Naturtejo da Meseta Meridional Geoparque Mundial da UNESCO



GEO-stories of our places and people: Zebreira

GODINHO, M.M., PEREIRA, A.J.S.C. & NEVES, L.J.P.F. (1986) – Análise geoquímica comparada dos plutonitos de Caramulo, Avô e Zebreira (Portugal Central). Memórias e Notícias, Publicações do Museu e Laboratório Mineralógico e Geológico da Universidade de Coimbra, 102: 43-68.

NEVES, L.J.P.F. & PEREIRA, A.J.S.C. (1994) – Ordenamento Al-Si dos feldspatos potássicos dos plutonitos da Zebreira. Memórias e Notícias, Publicações do Museu e Laboratório Mineralógico e Geológico da Universidade de Coimbra, 118: 117-127.

PEREIRA, A.J.S.C. (1985) – Os plutonitos de Zebreira (Castelo Branco) – contributo para o seu conhecimento geológico. Memórias e Notícias, Publicações do Museu e Laboratório Mineralógico e Geológico da Universidade de Coimbra, 100: 153-171.

PEREIRA, A.J.S.C. & GODINHO, M.M. (1987) – Modelagem duma série de diferenciação nos corpos ígneos da região da Zebreira (Castelo Branco – Portugal Central). Memórias e Notícias, Publicações do Museu e Laboratório Mineralógico e Geológico da Universidade de Coimbra, 104: 31-40.

PEREIRA, A.J.S.C., PEREIRA, L.C.G. & MACEDO, C.A.R. (1986) – Os plutonitos de Zebreira (Castelo Branco): idade e enquadramento estrutural. Memórias e Notícias do Museu e Laboratório Mineralógico e Geológico da Universidade de Coimbra, 101: 21-31.

SALGUEIRO, L. (2017) – Zebreira: Minha Terra – Meu Tesouro. União das Freguesias de Zebreira-Segura, 300 pp.

SEQUEIRA, A.J.D. (1991) – O Grupo das Beiras (Complexo Xisto-Grauváquico) entre Zebreira e Penamacor e a sua relação com o Ordovícico. III Congresso Nacional de Geologia, Coimbra: 77.

The editor
Carlos Neto de Carvalho
Scientific coordinator
Geologist

Cover: (Projecto Objectiva: Geopark)



MONTHLY ACTIVITIES



4-5 May – Granite Geomorphology expert visits Naturtejo Geopark. Piotr Migon is a Polish specialist in granite geomorphology, chief of the Geography and Regional Development Department in Wroclaw University. He is known for his work in geomorphology and for the book "Granite Landscapes in the world." On his last visit to Portugal, he spent 2 days in Naturtejo Geopark knowing granite landforms. He visited the pedunculate rocks from Arez-Alpalhão and Escalos de Baixo. Accompanied by Carlos Neto de Carvalho they also visited the granite landforms of Gardunha Mountain and Monsanto's Inselberg.



6-7 May – Divine Holy Cross Feast in Monsanto with thousands. The historical village of Monsanto, Idanha-a-Nova, dressed up for a stroll through the history of the "Most Portuguese Village of Portugal". The Divine Holy Cross Feast recreated the Legend of the Castle and during two days received thousands of visitors.

"This year we received many compliments for the organizations of this event. Visitors could come to the Feast, climb to the Castle and enjoy this beautiful village", said the Mayor the Municipality. Armindo Jacinto also highlights that "all the historical re-creation is closely linked to the people of Monsanto and their legends and traditions, which we have the greatest interest in preserve and value, always with the collaboration of the population itself". The Municipality of Idanha-a-Nova was responsible for the organization together with the Union of Parishes of Monsanto and Idanha-a-Velha and the Portugal Historical Villages Association, with Naturtejo Geopark support.

Competing for the 7 Portugal Wonders contest, Monsanto staged the famous Castle Legend, in tribute to the heroic Monsanto's resistance in laying siege to its impressive Medieval Castle.

For Paulo Monteiro, president of the Union of Parishes of Monsanto and Idanha-a-Velha, "these local traditions, transmitted across generations, are increasingly known at home and abroad ". This explains the growing interest of tourists and visitors, he said.

This year Monsanto received, once again, a very special delegation coming from Italy. The city of Finale Ligure, which collaborates for the last 3 years in this Medieval Fair entertainment, was represented by a group of performers and its President of the Municipality. In this context a twinning between Idanha-a-Nova and Finale Ligure is being finalised, so that more Italians discover this Portuguese region, particularly Monsanto, and also more Portuguese know that town of the Italian Riviera.

7 May – Run in Senhora da Graça Ramp. The União Idanhense Club, with technical support of Castelo Branco Run Association organized the 25th Senhora da Graça Ramp. 250 athletes participated in this competition supported by the Union of Parishes of Idanha-a-Nova and Alcafozes, as well as Naturtejo Geopark. The race is open to all age groups, male and female, and all athletes can participate individually or representing clubs, schools or any other community association. The race ended in the historical area of Idanha-a-Nova, in Largo Nossa Senhora do Rosário, near Idanhense's headquarters, in the year the Club celebrates its centennial.



6 to 17 May – Naturtejo Geopark in Iran. Carlos Neto de Carvalho, scientific coordinator of Naturtejo Geopark, visited Iran in the framework of a scientific cooperation project with the Institute for Advanced Studies in Basic Sciences in Zanjan. For the last 5 years this project has contributed for the paleontological knowledge from various regions of this Middle East country, in the form of several articles published in international scientific journals. Coordinated by Professor Aram Bayet-Goll, the team of researchers travelled through more than 3500km between the central mountains of Alborz and the Tabas Desert, searching for some of the most ancient known animal traces. This team also included another Portuguese expert, José Anacleto, curator of the Geological Museum of National Laboratory for Energy and Geology, reference institution in Portugal with which Naturtejo Geopark has developed several projects, and responsible for replicate the most important fossils found in the field. Despite the high temperatures felt in the mountains that rise from the desert, there were several findings reported to a time-lag between 545 and 470 million years, some of which with great importance for comparison with the known as Cruziana in Penha Garcia, both from biological evolution and preservation perspective. The casts made in situ will enable the continuity of the studies in Portugal and the possibility to develop replicas to display in a future museum dedicated to the internationally recognized Ichnological Park of Penha Garcia and its very special fossils. Besides the research work, Carlos Neto de Carvalho and José Anacleto coordinated a seminar in Zanjan on conservation of the Geological Heritage, Geotourism and Geoparks, dedicated to students and teachers from the two existing universities in that city located a few hundred kilometers west of Tehran. In the Museum of Geological Heritage of Tabas, the researchers had a meeting with local tourism authorities to discuss the viability and the next steps to develop a Geopark project in Iran. Qeshm Island is the only UNESCO World Geopark in this country.



8, 10 and 15 May – 2nd Field Trip of Rivers Project: Monitoring Ponsul River, by students from Idanha-a-Nova. On these days 60 students from the School Group of Idanha-a-Nova (6th A, 6th B and 8th A) visited their classes' adopted sections of the Ponsul River, in order to monitoring the river quality by checking the number of animal and plant species (biodiversity), test the degree of turbidity and water pH, determine the speed and the water flow, and the condition of the banks along the stretch. The instructors were Manuela Catana and Arlindo Cardoso.



9 May – Japanese in Naturtejo Geopark. The Spanish Tour Operator “Mikamitravel” brought 15 Japanese to visit Monsanto. They stayed in Hotel Fonte Santa and were accompanied by Rui Nunes from Geolife.



10 May – Educational Programme in Fossils Trail. 29 pupils from the 7th grade and 2 teachers from School Group Dr. José Silvestre Ribeiro in Idanha-a-Nova, participated in this programme. The instructors were Mariana Vilas Boas and Manuela Catana.



12 to 14 May – Geopark in Salon de l'Immobilier et du Tourisme Portugais in Paris. Naturtejo Geopark participated for the third year in the Salon de l'Immobilier et du Tourisme Portugais in Paris, organized by the Franco-Portuguese Chamber of Commerce and Industry, to promote the territory to French visitors interested in discovering a new destination, but also to an audience seeking for innovative projects and inspiring places to live. This year the Fair, in Porte de Versailles, hosted 200 exhibitors, a Conference cycle, a gastronomic villa, Portuguese and French media. This is a privileged place to get information about acquisition and investment in Portugal, about tax advantages for non-usual residents in Portugal as well as logistical information about our country, to more than 2000 French who spend vacations in Portugal.

Hermano Sanches Ruivo, Paris Municipal Councillor, recognized the increased visibility gained by Naturtejo Geopark's territory among the French public thanks to the strong bet made in recent years. Naturtejo Geopark's stand was coordinated by Joana Rodrigues.

13 May – Training Course for control methods of invasive plants in Orvalho. Invasive plants are non-native plants that develop quickly and go beyond human control, causing negative environmental and economic impacts. An example is *Acacia dealbata*, Commonly known as “mimosa” and original from South-Eastern Australia (New South Wales, Victoria) and Tasmania and is currently considered one of the worst invasive species in terrestrial ecosystems in continental Portugal, on one hand due to the ease of dispersal of its seeds that germinate intensively after the passage of fire or after disturbances, and on the other hand to the vegetative reproduction capacity, forming strong shoots or roots after cutting. Besides the known effects on human health (allergies), carries strong impacts on ecosystems (by its effects of Allelopathy, decreased water lines flow, worsening soil erosion and alteration of its composition, favouring its own growth and other invasive species), and also economic impacts related to the decrease of productivity and high costs to implement control measures.

This voluntary action is precisely one of the most economic methods used to control it: the peel, by removing all the bark and vascular cambium to the soil surface, if possible into the root.

This is part of a collaborative project between the Municipality of Oleiros, Naturtejo Geopark, Abastena – Timber Supply Company, Lda and the Functional Ecology Center (EFC) of Science and Technology College from Coimbra University, based on the support to develop intervention projects in Fraga de Água D'Alta (candidate for Natural Monument), as well as the initiatives and projects for awareness and environmental appreciation.



13 to 14 May – Soup Festival in Proença-a-Velha. New year new record to the biggest Portuguese Soup Festival in Proença-a-Velha, in Idanha-a-Nova Municipality. Many visitors had the chance to taste and vote for the 130 soups in competition. From fish soup to mushrooms soup, from traditional to creative recipes, restaurants, institutions and local talents presented their soups and visitors choose the winners. “Proença-a-Velha received the biggest soup festival in Portugal, and the greetings are to all the participants”, said the President of the Municipality of Idanha-a-Nova. To Armindo Jacinto, the XV Traditional Soup Festival promoted, once again the prestigious local gastronomy, particularly the soup, as a dish with strong identity roots in the region. Helena Silva, President of the Parish of Proença-a-Velha, highlights the evolution. “We started 15 years ago with only 13 soups and today he have more than 100”, also because “the increasing number of participants is a sign that we are doing a good job”.

Visitors choosed as the best soups the “Gaspacho” from the already awarded João Martinho (Rosmaninhal) for individual category, “Rock Soup” from MASCAL (Ladoeiro) for Institutions and “Mushroom Soup” from Vamos ó Manteigas (Idanha-a-Nova) for the 5th consecutive year for Restaurants.

14 May – Trekking in the Ocreza waterways and the Gardunha. For the 4th year in a row CantardeCuco – Friends of Lourçal do Campo Association held the walking trail “Ocreza waterways and the Gardunha”, aiming to dazzle the participants with an amazing world of nature and tradition, in a peculiar village in Castelo Branco's county, in Naturtejo Geopark. Dozens participated in this walk.

13 to 15 May – German Tour Operator Geographica ranged Geopark. 17 visitors came with Geographica, stayed in Hotel Fonte Santa and ranged some MBT trails.

13 to 15 May – Programme through Naturtejo Geopark. The Spanish Tour Operator Mundo Amigo held a programme through the Geopark and brought 25 visitors, guided by Rui Nunes. On the 1st day they visited the Historical Village of Monsanto, and the next days they visited the Bishop's Garden and Francisco Tavares Proença Júnior Museum in Castelo Branco, had a boat tour and at last walked through the Fossils Trail in Penha Garcia.

16 May – Field Trip “The Natural Monument of Portas de Ródão and the Fossil Trunks of Vila Velha de Ródão”. This field trip had 32 students accompanied by 3 teachers from the School Group of Proença-a-Nova. This activity was held within the subject of Biology and Geology, for the 10th grade. Students analysed the Fossils Trunks in the garden of Casa das Artes e Cultura do Tejo and had a boat tour in Tejo River passing by the Natural Monument of Portas de Ródão which allow them to observe the flora, fauna and interpret the landscape. The instructor was Manuela Catana.



17 to 19 May – National Meeting of Committees for Children and Youth Protection. Idanha-a-Nova welcomed for 3 days the National Meeting for Evaluation of 2016 of 309 Committees for Children and Youth Protection (CPCJ). Work was centered in the promotion and protection of child's human rights. The Meeting was attended by 700 specialists and representatives from the several districts of Portugal.

Among other prominent figures, this Meeting opened the State Secretary of Inclusion of People with Disabilities, Ana Sofia Antunes, the General Attorney of the Republic, Joana Marques Vidal, and the Coordinator of the Government Agency for the Hinterland Valorisation, Helena Freitas.

Armindo Jacinto, President of the Municipality of Idanha-a-Nova said "hosting this Meeting on child and youth wrights in Idanha was the right choice as we bet on education and improve living conditions of young people, as an investment for their future"

Armando Leandro, President of the National Committee for Children and Youth Protection, was amazed with the Meeting organization supported by Naturtejo Geopark with accommodations and meals and said that all the Committees leave Idanha-a-Nova "with the closing of our solidarity as tight and increasingly determined to do better."

The organization received many compliments. The State Secretary of Inclusion of People with Disabilities gave a "recognized appreciation for all the effort and commitment" the Municipality and Idanha-a-Nova's Committee, directed by Patrícia Alexandre, put in this National Meeting.

Naturtejo Geopark also arranged visits to the territory namely to the Historical Villages of Monsanto and Idanha-a-Velha, and the Geocompany Aromas do Valado, guided by Rui Nunes and Joana Rodrigues.



18 May – Celebration of Outdoor Classes' Day in Vila Velha de Ródão. EThis interdisciplinary field class to celebrate Outdoor Classes' Day took place in Vila Velha de Ródão, in the Geomonument Portas de Ródão. 20 pupils of the 7th grade from the School Group of Vila Velha de Ródão and 7 teachers participated in this special day. Subjects as Natural Sciences, Geography, Maths, Portuguese and History were taught outdoors. Naturtejo Geopark was invited to present the Geopark and Manuela Catana talked about the evolution of the landscape in the Viewpoint of King Wamba's Castle.



18 May – Naturtejo Geopark as an example in a Meeting about “Mineral Waters and Territorial Planning”.

Cultural and Congress Centre of Caldas da Rainha hosted the Portuguese Association of Water Resources Days under the theme “Mineral Waters and Territorial Planning”, organized by the Specialized Committee of Groundwater from the Portuguese Association of Water Resources. Naturtejo Geopark participated in these Days where management methods and mineral waters development were discussed focusing on sustainable development of water and geological resources. Joana Rodrigues presented the talk “Water and Geological Heritage on Naturtejo Geopark: enhancing and dissemination strategies”, in a meeting that intended to boost interdisciplinary communication between market players of hydro and geothermal resources, the surface and underground water resources and territory management. Professor Martins de Carvalho, Technical Director and Dr. Pedro Próspero, Director of Termas de Monfortinho (Idanha-a-Nova) also attended this meeting that included a visit to the water withdrawal in the Hidromineral Concession of Caldas da Rainha and its Protection Perimeter.

19 May – Opening of Interpretation Centre of Monsanto. The new place was inaugurated in Monsanto's Tourist Office with a temporary exhibition highlighting the history of Monsanto, not forgetting its geomorphological special landscape.

24 May to 11 June – Landscape Festival 2017 in Naturtejo Geopark. This week another Landscape Festival begins within Naturtejo Geopark's Territory. All seven Municipalities, along with parishes and local associations gather to raise awareness of the landscape, the products and the people who make this a great innovation potential region.

The European Geoparks Week gathers 69 territories with the same Geological affinity internationally recognized, in a period when several activities take place targeted to the wide audiences, involving tens of thousands participants. This year Naturtejo Geopark gathers with its colleagues from Villuercas-Ibores-Jara, in the neighbour Extremadura in Spain and Bergstrasse-Odenwald, in Germany, organising educational and promoting events. And so, on the 24th we have “Geoconvivência”, an event organized by the Spanish Geopark with all local schools and also with Naturtejo Geopark represented by the School Group José Silvestre Ribeiro from Idanha-a-Nova, to open students' educational horizons. On 4th and 5th June, Naturtejo Geopark will celebrate the International Environment Day in Messel Pit, designated by UNESCO as World Heritage. Here the evidence of "Geodiversity landscape" of Naturtejo Geopark will be documented through local flavours, sweet and savoury, which will be prepared by chefs Mário and Raquel Ramos, representing Geocakes. On the previous day, the neighbour city of Lorsh will host the Peony Festival, and Toulões, Peony Village in Portugal, will be the Guest of Honour to show its endogenous resources to German markets and investors.

The first weekend in the Landscape Festival is dedicated to the VI Flower Festival in Aldeia de Santa Margarida, one of the most coloured and joyful festivals in the region to celebrate Spring and attracts thousands of visitors from both sides of the border. In Orvalho happens another GeoTrail, one of the best trails in the region. On Sunday, in Vale da Senhora da Póvoa new heritage and landscape are discovered in Serra d'Opa, a unique trail not to be missed. Next week we celebrate the Geologist Day in the Geomonument Portas de Almourão, with distinguished guests who will explain the mysteries of how this valley came to be and possibly enjoy a Gin in full nature and in good company. At the same time, Geology students from the University of Lisbon are on a field trip in Castelo Branco and Proença-a-Nova. On 6th June, an exhibition about gold in the Living Science Centre of Forest in Proença-a-Nova is inaugurated to share the geological origins and gold mining in Naturtejo Geopark, particularly in Proença-a-Nova. Finally to close another year, the European Geoparks Week presents other Sports in Nature Festival in Zebreira, with many activities to be announced in due.



24 May – Participation in Geoconvivência 2017 from UNESCO Villuercas Ibores Jara Geopark. This activity was attended by 600 students and more than 100 teachers, and was organized by Villuercas Ibores Jara UNESCO Global Geopark, in Berzocana, Spain addressed to all schools. Naturtejo Geopark was invited to take a group of students from its territory. So, 22 pupils from the 10th grade and their Biology and Geology teacher from School EB 2,3/S José Silvestre Ribeiro from Idanha-a-Nova travelled to Spain. In the morning students made a walking trail which took them to the Botanic Garden created by children and elderly using native species and where some quartzite rocks with Cruziana ichnofossils are exhibited, as are also in Naturtejo Geopark in the Ichnological Park of Penha Garcia. During the visit all classes planted a native tree in the Botanic Garden. The group also learned about the geosite “Cueva del Cancho de las Sábanas”, where they saw rock art from between 4000 to 1000 BC, in the quartzite rocks. After the trail they visited the village and in the Plaza Mayor square they participated in the Seminar to show some of the main geosites and the most emblematic species of fauna and flora from Naturtejo Geopark and also attended presentations about Villuercas Ibores Jara Geopark by pupils from its schools. Before the return the group had a delicious lunch offered to all participants. It was a fantastic day of joy, learning and fun about Life and Earth History between pupils, teachers, Berzocana's Community and technicians from both Geoparks. We were extremely grateful for this invitation and all this Geointeraction! Manuela Catana and Catarina Caria represented Naturtejo Geopark. This activity was part of the “Landscape Festival 2017” – European Geoparks Week.



25 and 26 May – Brazilian specialists in geological heritage visit Naturtejo Geopark. Naturtejo Geopark hosted two Brazilian researchers for Geoconservation, Professor Maria da Glória from São Paulo University and the researcher Pâmella Moura who visited the territory for two days accompanied by Joana Rodrigues and Carlos Neto de Carvalho and saw several protection and promotion strategies for Geological Heritage. In Vila Velha de Ródão they visited some geosites from “Urban Geology and Archaeology Trail”, as the Fossils Trunks, Portas de Ródão Viewpoint, the Geological Section of Ponte do Ródão, the Zooarchaeological Site of Foz do Enxarrique; the Castle's Viewpoint, Portas de Almourão and held a boat trip on Tejo through Portas de Ródão. I

n Oleiros they focused on the International Apalachian Trail, and visited Estreito, Portelo's Geosite, Portelo's Viewpoint and Mosqueiro's Viewpoint. The next day travelled to the Ichnological Park of Penha Garcia and Monsanto's Inselberg, through the Boulders Trail. These researchers participated also in a geoliquor taste held by the Geopark's partner company Acha Doce from São Miguel D'Acha.

26 May – Visit to the Historical Village of Monsanto. 25 students from the Portuguese Course of the Teachers Centre and Resources from Naval Moral in Spain visited the Historical Village of Monsanto, guided by Jorge Costa.



26 to 28 May – Flower Festival in Aldeia de Santa Margarida. The 6th Flower Festival in Aldeia de Santa Margarida received thousands of visitors from all over the country to an irresistible world of imagination, colour and fun. During the weekend, the streets of this village were decorated with 300 thousand natural and artificial flowers fruit of art and commitment carried out by the population. Armindo Jacinto, president of the Municipality, has no doubt saying “Santa Margarida's inhabitants are the ones who deserve congratulations, for their creativity in street decoration for these days, but also for all the flowers that embellish the village during the year”. Today, the Flower Festival became mandatory for many. “It's our biggest pride” said the Parish President to reinforce that “the Municipality support is essential, but only the union of our people makes this Festival possible”. Zélia Curto praises the locals' dedication and also people living outside the village: “They make the decorations where they live and bring them on weekend”. The Flower Festival's success brings more and more “sons of the village” to return here to celebrate this event, and also participate in this heart-warming festival.

26 to 28 May – Spring in the Geopark. Mr. Fernando Barbosa brought another group of friends for a programme through Naturtejo Geopark. The group had 32 participants staying in Hotel S. Tiago in Penamacor and were guided by Rui Nunes. The programme took place in the Municipality of Penamacor, where they visited the village of Penamacor and made a walking trail in the Natural Reserve of Serra da Malcata.

27 May – Once again the Orvalho GeoTrail. The village of Orvalho held, on 27th May, the 12th edition of the Orvalho GeoTrail. The trail had 2 parts: the walking trail and the Medieval Supper. The walking trail with 8.9km, 906m climbing and about three and a half hours long, passed by Geomonuments in the territory of the UNESCO Naturtejo Geopark.



28 May - Walking trail in the Geosite of Serra D'Opa. Knowing the Geosite Serra D'Opa and the Castle of Sortelha Velha was the theme for another walking trail with 14 participants, and marked the participation of Penamacor in the Landscape Festival 2017 integrated in the European Week of UNESCO Global Geoparks. The villages of Vale da Senhora da Póvoa and Casteleiro shared the organization. The trail started at Alameda dos Balcões in the village of Vale da Senhora da Póvoa in Penamacor, and ended at the "Rural Gastronomy and Hunting Fair" in the village of Casteleiro, Sabugal.



29 and 30 May - Geology and Environment Course from the Faculty of Science of the University of Lisbon visit Naturtejo Geopark. About 30 students and 4 teachers from the Geology and Environment Degree from the Faculty of Science of the University of Lisbon came to Naturtejo Geopark for two fieldwork days. They started by the analysis of an abandoned quarry in Alcains. They made a detour to know arkoses of Beira Baixa near the Ponsul Bridge and also to visit Foz do Enxarrique after the geological setting in Archaeology Museum of Ródão. The second day was dedicated to celebrate the Geologist Day.



30 May - Geologist Day's Celebration.

30 May - Geologist Day's Celebration. This year Naturtejo Geopark and Centro Ciência Viva da Floresta, supported by the Portuguese Geologists Association celebrated together the Geologist Day in the Geomonument of Portas de Almourão (Sobral Fernando, Proença-a-Nova) with a GeoGin, a special "Science Gin". Noel Moreira, geologist from Évora unveiled the secrets of Vale Mourão for snoopers, fans, geologists, teachers and Geology students while visiting Naturtejo Geopark.

The junipers, a relic type in the quartzite ridge of Serra das Talhadas were the scenario for the GeoGin seasoned with local flavours and scents as cherry, juniper and pine tree, prepared by David Costa's skilled hands, a local specialist for this drink. In the morning, Naturtejo Geopark prepared a visit to the exhibition in the Living Science Centre of Forest for students from the Faculty of Science of the University of Lisbon and from the High School Pedro da Fonseca in Proença-a-Nova.



IMPACT OF GEOPARK IN MEDIA



TV & Radio

24th May (Rádio Castelo Branco) – Naturtejo Geopark with research project in Iran

25th May (Rádio Castelo Branco) – Naturtejo Geopark is increasingly a desirable territory

Newspapers & www

May (O Concelho de Vila Velha de Ródão) – Outdoor Classes' Day – Vila Velha de Ródão

3rd May (Gazeta do Interior) – Toulões gives a step towards Internationalization – Rosa Albardeira leads to twinning with Lorsh in Germany

4th May (Reconquista) – International Conference on Archaeology and History of Defence Lines in Proença

4th May (Reconquista) – Toulões – Rosa Albardeira towards internationalization

17th May (Povo da Beira) – Soup Festival beats visitors record

18th May (Reconquista) – 130 soups in the biggest festival

23rd May (BeiraNews) – Naturtejo Geopark promotes European Geoparks Week

23rd May (Gazeta Rural) - European Geoparks Week

24th May (Newsletter of Geologist Portuguese Association) – Celebrate Geologist Day with the Living Science Centre of Forest and Naturtejo Geopark

24th May (Jornal do Fundão) – Landscape Festival with Tejo in the background

25th May (Portal de Nisa) – Naturtejo Geopark with Exhibition in Grutas da Moeda

25th May (Diário de Notícias) - Naturtejo Geopark promotes European Geoparks Week

26th May (Diário Digital de Castelo Branco) - Naturtejo Geopark is increasingly a desirable territory to learn and make Science

31st May (Gazeta do Interior) – Flwoer Festival – Coloured streets in Aldeia de Santa Margarida

SCIENTIFIC CONTRIBUTIONS FOR THE GEOPARK AND THE GEOSCIENCES



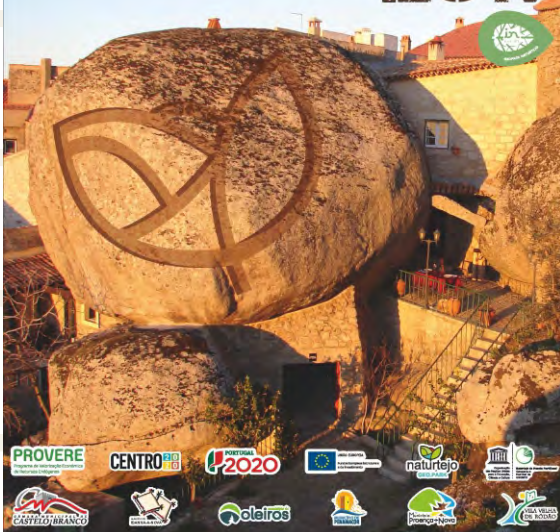
- Rodrigues, J. - Património Hidrogeológico do Geopark Naturtejo, Geoparque Mundial da UNESCO: estratégias de valorização e divulgação. Jornadas da Associação Portuguesa de Recursos Hídricos, Resumos de Comunicações. p.11
- Colmenar, J. & Pereira, S. – Evolución de las comunidades bentónicas de braquiópodos en el Ordovícico. XV EJIP, 21-22 Abril, Pombal: 107-111.
- Pereira, S., Colmenar, J., Sá, A.A., Pires, M. & Silva, C.M. – A associação macrofossilífera da Formação Ribeira da Laje (Berouniano superior, Portugal): as últimas comunidades endémicas ordovícicas peri-gondwânicas. XV EJIP, 21-22 Abril, Pombal: 305-309.

PROMOTION FOR THE GENERAL PUBLIC



FESTIVAL DA PAISAGEM

Semana Europeia dos Geoparques
24 de Maio a 11 de Junho
2017



24 maio

Geoconvivência 2017

Local: Colégio Público Montellano, Berzocana, Espanha
Organização: CRA Montellano, Geoparque Villuerca-Ebore-Jara Mundial da UNESCO, Geopark Naturtejo Mundial da UNESCO, ERGA e José Silvestre Ribeiro de Idanha-a-Nova

27 maio

GeoRota do Orvalho

Local: Orvalho - Oleiros
Organização: Junta de Freguesia de Orvalho, Geopark Naturtejo Mundial da UNESCO

29 e 30 maio

Excursão de Geologia Aplicada pelo Geopark Naturtejo

Local: Castelo Branco e Proença-a-Nova
Organização: Geopark Naturtejo Mundial da UNESCO, Departamento de Geologia da Universidade de Lisboa, Centro Ciência Viva da Floresta

4 junho

Toulões no Festival da Peónia

Local: Lorach, Alemanha
Organização: Geoparque Bergstrasse/Odenwald, Naturtejo

6 Junho

Exposição "O Ouro - da Formação do Universo à Conquista do Espaço"

Local: Centro de Ciência Viva da Floresta - Proença-a-Nova
Organização: CCV-Floresta, Município de Proença-a-Nova, Geopark Naturtejo Mundial da UNESCO

26 a 28 maio

VI Festival das Flores

Local: Abóia de Santa Margarida - Idanha-a-Nova
Organização: Junta de Freguesia da Abóia de Santa Margarida, Município de Idanha-a-Nova

28 maio

Caminhada "Conhecer o Geossítio Serra d'Opa e o Castro de Sortelha Velha"

Local: Vale da Senhora da Faveia - Penamacor
Organização: Município de Penamacor, Rota 9 Alentejo, Junta de Freguesia de Vale da Sta. da Faveia, Junta de Freguesia de Castelo, Geopark Naturtejo Mundial da UNESCO

30 maio

Comemorações do Dia do Geólogo nas Portas de Almourão

Local: Sobral Penadido, Proença-a-Nova
Organização: Centro de Ciência Viva da Floresta, Município de Proença-a-Nova, Naturtejo

5 junho

Comemorações do Dia Mundial do Ambiente - Workshop "Tasting Time" do Geopark Naturtejo

Local: Museu do Mezen (Pit Silló Património da Humanidade)
Organização: Welldo - Onda - Messel - GmBH Alemanha, Geopark Naturtejo Mundial da UNESCO

10 a 11 junho

V Festival de Desporto na Natureza

Local: Zêzere - Idanha-a-Nova
Organização: União das Freguesias da Zêzere e Segura, Município de Idanha-a-Nova

GEOPARK NATURTEJO

A ROCHA QUE NOS UNE



8 Abr. a 29 Out. de 2017

Grutas da Moeda
S. Mamede



CONGRESSO INTERNACIONAL
O Termalismo e o Desenvolvimento Regional
Auditório Multiusos - Nelas
2 a 4 de Junho 2017

Inscrições abertas:
www.termosdafelgueira.pt
termos@termosdafelgueira.pt
232 945 000



PROMOTION FOR THE GENERAL PUBLIC



V FESTIVAL DE DESPORTO NA NATUREZA ZEBREIRA
10/11 JUNHO 2017

Desportos radicais e tradicionais | Diversão Infantil | Paint Ball | Escalada | Rappel | Slíde | Matraquilhos Humanos | Tiro com Arco Etc

SÁBADO	DOMINGO
09h30 Passeio a cavalo do Desporto da Natureza > Inscrições - 968 211 496 / 968 696 038	09h30 - Passeio Pedestre "Trilhos da Natureza e Biodiversidade" - Concurso de Pesca (organização Clube de Caça e Pesca de Segura) > Inscrições - 277 427 401 - Gaiteiros da Beira
13h00 Abertura do certame - Grupo de Bombos do Ladoeiro - Tasquinhas - Animação Musical	10h00 Abertura do Festival - Feira de Produtos Regionais, Tasquinhas - Animação Musical: > Grupo de Concertinas de Castelo Branco > Grupo de percussão Chibatás
14h30 Início do VI Festival Hípico (provas de saltos) - Alegres das Concertinas	14h30 VI Festival Hípico (provas de saltos)
17h00 Início da Feira de Produtos Regionais	17h00 "Banda Música na Mochila" (Teatro em caixa)
18h00 Passeio de BTT "Despormatúra" > Inscrições - 277 427 401	18h00 2ª Prova de Atletismo do "Desporto da Natureza"
18h30 Animação Musical (em palco): > Rancho folclórico da ACDL > Grupo de cantares de Segura	18h30 Animação Musical (em palco): > Grupo de Cantares Tradicionais de Zebreira "Saca Sons" > Grupo "Adufes e Cantares de Oleado" > Grupo "Vozes do Pelourinho da Zebreira"
20h30 Tuna "ENCANTATUNA" Tuna "JUVENTUNA"	20h30 "Rute Marlene"
22h00 Vítor Rodrigues "Põe a Mão na Cabecinha"	
23h30 Animação durante a noite DJ "RUMBLE"	
02h00 Fecho	

1 Junho 2017 Dia Mundial da **CRIANÇA**
Jardim da República PENAMACOR

ORIENTAÇÃO

PROVERE | iNature | naturtejo | CENTRO 2020 | unicef

11 Junho 2017
À DESCOBERTA DA NATUREZA
Percurso Pedestre Zebreira

2017 IDANHA-A-NOVA

Gabinete de Turismo da Câmara Municipal de Idanha-a-Nova | Centro Cultural Davino Idanha-a-Nova | Telefone: +351 277202200 | Email: info@turismodanatureza.com

CO-FINANCIAMENTO: Interreg Espanha - Portugal

ORGANIZAÇÃO: IDANHA-A-NOVA TERRITÓRIO UNESCO

APÓIOS: naturtejo, Shareballons

PENHA GARCIA
TRILHOS RADICAIS
15 JUNHO

INSCRIÇÃO (INCLUI ALMOÇO E SEGURO)
SÓCIOS: 8 TRILOBITES
ADULTOS: 10 TRILOBITES
CRIANÇAS: 5 TRILOBITES
SÓ ALMOÇO:
SÓCIOS: 6€
NÃO SÓCIOS 8€

PROGRAMA
10H00 ENCONTRO LARGO DO CHÃO DA IGREJA
10H30 VISITA GUIADA PELA ROTA DOS FÓSSEIS
12H30 ALMOÇO NO PARQUE ICNOLÓGICO
15H00 INÍCIO DAS ATIVIDADES ESCALADA/RAPPEL

CONTACTOS:
SPORTINGPENHAGARCIA@GMAIL.COM
CELIA COSTA-969 069 164
JORGE NUNO-966 016 714

ORGANIZAÇÃO: PENHA GARCIA
APÓIOS: naturtejo, Shareballons

PROMOTION FOR THE GENERAL PUBLIC



Sonntag, 4. Juni 2017

13. UNESCO - WELTERBETAG MIT PFINGSTROSENSONNTAG

Welterbetag - „Zwischen Himmel und Erde“

Pfingstrosensontag

Treffpunkt für Liebhaberinnen und Experten

Von 11 – 18 Uhr im gesamten Areal des UNESCO WELTERBE Kloster Lorsch Zwischen Museumszentrum und Besucherinformationszentrum

FÜHRUNGEN | VORTRÄGE | INFORMATIONEN | PFINGSTROSENVERKAUF STÄRKUNGEN UND ERFRISCHUNGEN AM WEGESRAND



PROGRAMM DES 13. WELTERBETAGES MIT PFINGSTROSENSONNTAG

Von 11 – 18 Uhr zwischen Königshalle und Besucherinformationszentrum BIZ

- | | |
|--|--|
| <p>11 Uhr Die Marktstände öffnen (zu Füßen der Ev. Kirche)</p> <p>11 Uhr Eröffnung „Aus Ton und Sand: Mönch und Nonne, Fabelwesen, Baukeramik im Kloster Lorsch“ (geladene Gäste)</p> <p>Ab 11 Uhr Museumspädagogische Aktion „Lilienstab und Spitzvoval“; Fliesen prägen (Adaltherhaus)</p> <p>11.30 Uhr Führung durch den Kräutergarten (hinter der Zehntscheune; 60 Min.)</p> <p>11.30 Uhr Tabakführung (Treffpunkt: Altes Rathaus; 60 Min.)</p> <p>13 Uhr Führung durch die Ausstellung „Aus Ton und Sand“ (Schaudepot Zehntscheune)</p> <p>13.30 Uhr Vortrag des Geoparks Naturtejo/Portugal: Die wilden Pfingstrosen des Geoparks Naturtejo (Paul Schnitzer-Saal, ca. 60 Min.)</p> <p>14.30 Uhr Führung durch die Ausstellung „Aus Ton und Sand“ (Schaudepot Zehntscheune)</p> <p>15 Uhr Pfingstrosentausch und -pflanzung zwischen dem Lorsch Paeoniengarten und dem Geopark Naturtejo/Portugal (Paeoniengarten)</p> | <p>15 Uhr Führung durch die Ausstellung „Endzeitvisionen aus Lorsch und Cambrai“ (Museumszentrum, ca. 30 Min.)</p> <p>15.30 Uhr Stadtführung (ab Altem Rathaus, ca. 60 Min.)</p> <p>16 Uhr Führung im Paeoniengarten (Ev. Kirche, ca. 60 Min.)</p> <p>17 Uhr Tabakführung (Treffpunkt Tabakscheune, ca. 60 Min.)</p> |
|--|--|
- Von 11 – 18 Uhr ist das Welterbe-Café des Kuratoriums UNESCO-Weltkulturerbe Kloster Lorsch am BIZ geöffnet.
 - Ebenfalls 11 – 18 Uhr Pfingstrosenverkauf, Informationen und Produkte rund um die Pfingstrose sowie Informationsstände des KULTour-Amtes, der Pfingstrosengruppe, des UNESCO Geoparks Bergstraße-Odenwald und des Geoparks Naturtejo/Portugal am Paeoniengarten.
 - Von 10 – 17 Uhr Ausstellung „Endzeitvisionen aus Lorsch und Cambrai“ im Museumszentrum MUZ geöffnet.
 - Sämtliche Führungen, Vorträge und Demonstrationen sowie der Museums-eintritt sind am Welterbetag und Pfingstrosensontag frei (Freiwilligkeitslabor Laresham: Eintritt ermäßigt).



SALVA TATERRA

Edição 2017

22 a 25 JUN ECO-FESTIVAL

BEIRA-BAIXA SALVATERRA DO EXTREMO / IDANHA-A-NOVA

CONCERTOS • PERCUSSÃO PRESENTES • WORKSHOPS • EDUCAÇÃO AMBIENTAL • CONFERÊNCIAS • CINEMA • ANIMAÇÃO DE RUA • BAILES • PARTILHAS

22 QUINTA	23 SEXTA	24 SÁBADO	25 DOMINGO
10:00H JOSÉ VALENTE	10:00H TIAGO SAMI PEREIRA	10:00H ADUFE E ALBUQUERQUE	10:00H MARIANA ROUIZ / EDGAR VALENTE
12:00H CUSTÓDIO CASTELO TRIO	12:00H SEA GROOVE	12:00H ROYAL BERMUDA	12:00H ANA STILLWELL
14:00H A JIGSAW	14:00H LES CRAZY COCONUTS	14:00H MILDU & FLINT	14:00H ZUKATUGA
16:00H 24 ROBBERS SWING BAND	16:00H PACAS	16:00H LAVOISIER	16:00H OS COMPOTAS
18:00H DJ SININHO	18:00H DJ EL GARZÉ	18:00H SENZA	18:00H THEY MUST BE CRAZY
20:00H DJ SININHO	20:00H DJ EL GARZÉ	20:00H CRIATURA	20:00H PAS DE PROBLEME

www.salvaterra.pt

10 e 11 JUNHO 2017 | ESCALOS DE BAIXO

VII FEIRA SABORES DO BORREGO

GASTRONOMIA REGIONAL

Mostra de Produtos Regionais e Artesanato

RESTAURANTES E TASQUINHAS

SÁBADO 10 DE JUNHO

10:00H: Abertura da Feira

10:00H: Stand com Artesanato, Produtos Regionais, Tasquinhas e Restaurantes com Gastronomia Regional

10:00H: Arruada e animação da Feira com os BOMBOS DE ALMACEIDA

10:00H: Abertura oficial com visita do Presidente da Câmara e demais entidades oficiais

10:00H: Concerto com "BIG BAND DO CONSERVATÓRIO REGIONAL DE CASTELO BRANCO"

14:00H: Concerto do Grupo de Música Tradicional Portuguesa "VENTOS DA LÍRIA"

18:00H: Atuação do Grupo Musical "RUI AZIAGO E OS FREEDOM"

DOMINGO 11 DE JUNHO

08:00H: Passeio Pedestre Passeio de Motorizadas antigas

11:30H: Animação da Feira com Grupo de Música Tradicional "CORDOFÓFOS"

15:00H: GRUPO DE BOMBOS DA ASSOCIAÇÃO DE APOIO À CRIAÇÃO DO DISTRITO DE CASTELO BRANCO

17:00H: Torneio de Fito

17:30H: Anúncio de Zamba

19:00H: Concerto da Orquestra "ORO FOHE"

21:00H: Concerto com o Grupo de Música Tradicional Portuguesa "ANTIGONA ENSEMBLE"

23:00H: Encerramento da Feira

Organização: Câmara Municipal Castelo Branco, Câmara Municipal Naturejo, Interreg, etc.

PROMOTION FOR THE GENERAL PUBLIC



III CONGRESSO DAS MEDICINAS TRADICIONAIS

AS FORÇAS DA NATUREZA • AS ENERGIAS • OS MEDOS ANCESTRAIS

E

I MOSTRA DA TRADIÇÃO

“O PÃO”

AS BICAS • A TIBORNA • OS BOLOS

PENHA GARCIA
CONCELHO DE IDANHA-A-NOVA

17 E 18 JUNHO 2017

INSCRIÇÕES GRATUITAS



IDANHA-A-NOVA
TERRITÓRIO UNESCO

Secretariado / Inscrições:
Posto Turismo de Penha Garcia
Tel.: 277 366 011

Mário Pissarra
Email: mpires43@hotmail.com
Tel.: 965853166



CLUBE
FIAT
DE PORTUGAL

3-4 de junho 2017

Passagem Clube Fiat de Portugal
por terras de IDANHA-A-NOVA

IDANHA-A-NOVA
TERRITÓRIO UNESCO

naturtejo

Visit Naturtejo Geopark in:



www.geoparknaturtejo.com



www.facebook.com/geoparknaturtejo.mesetameridional



www.instagram.com/geopark_naturtejo/



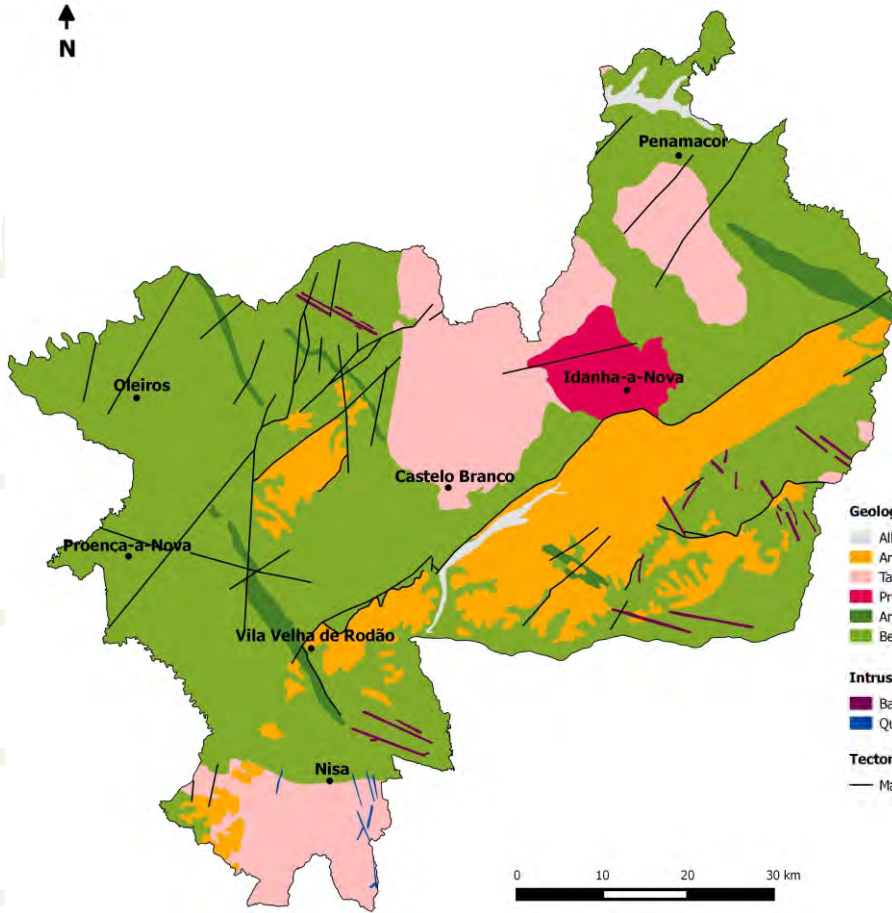
www.youtube.com/geoparknaturtejo



issuu.com/geoparknaturtejo



www.slideshare.net/geoparknaturtejomesetameridional



Geological Formations (Ma-Million years)

- Alluvium and fluvial terraces - Pliocene-Holocene (1Ma-present)
- Arkoses, breccias and conglomerates - Eocene-Pliocene (50-2.6Ma)
- Tardi-Variscan orogenic granites (315-300Ma)
- Pre-Variscan granodiorites (480-472Ma)
- Armorican Quartzite and schists - Ordovician-Lower Silurian (488-435Ma)
- Beiras Group (schists and greywackes) - Neoproterozoic (610-542Ma)

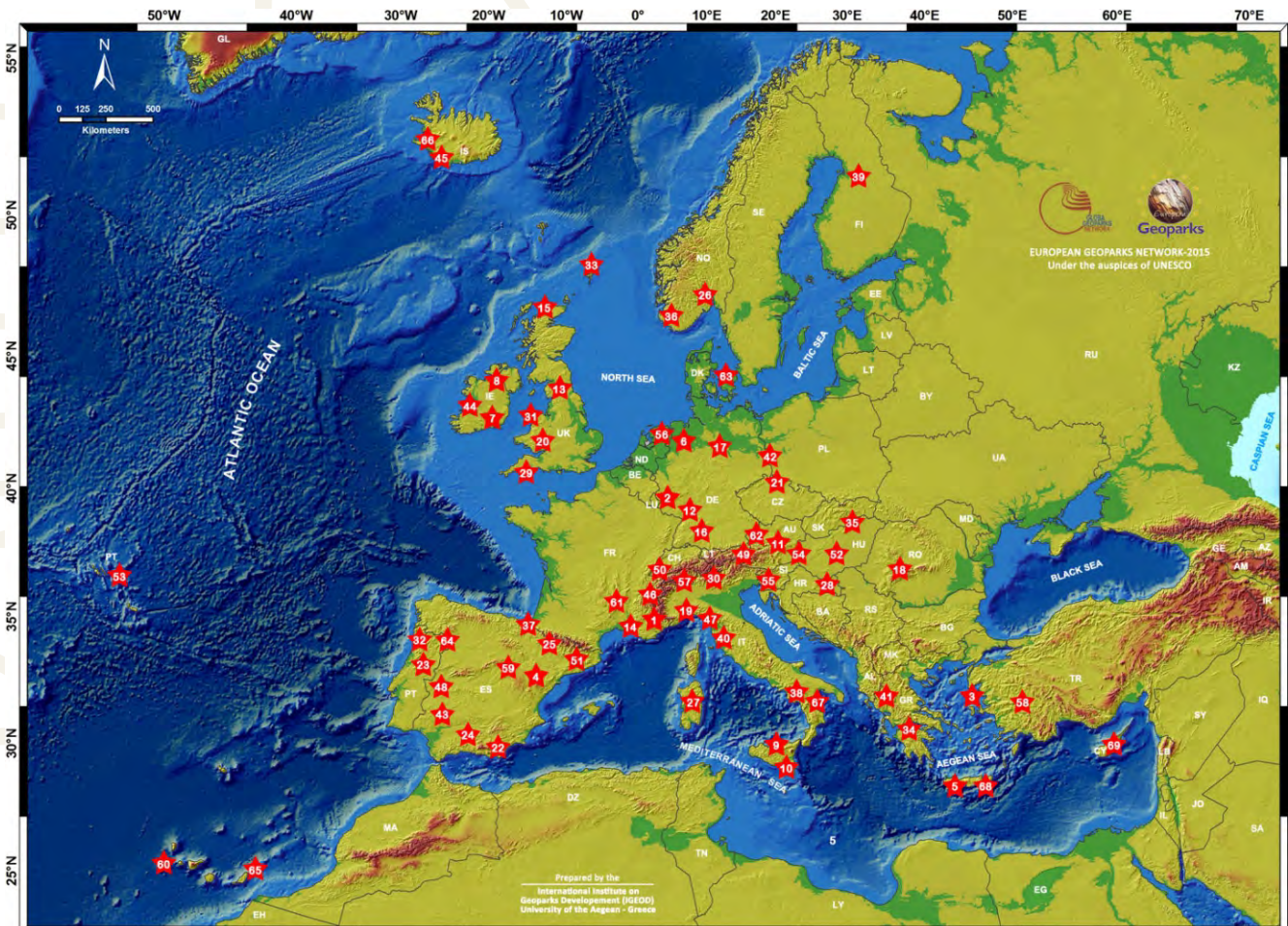
Intrusive rocks

- Basic rocks, aplites and pegmatites
- Quartz

Tectonic

- Main faults

Geoparks: Geology with human face





Edition - Geopark Naturtejo, 2017
Coordination - Carlos Neto de Carvalho
Texts - Carlos Neto de Carvalho, Joana Rodrigues,
Manuela Catana, Municipality of Idanha-a-Nova; Diário
Digital of Castelo Branco and Oleiros Magazine
Photos - Joana Rodrigues, Carlos Neto de Carvalho,
Manuela Catana, Oleiros Magazine,
Diário Digital de Castelo Branco
Clipping - Alice Marcelo e Carla Jacinto
Translation - Carla Jacinto
Design - Layer [Design and Print Studio]
Editing - Joana Rodrigues



CRUZIANA

GEOPARK NATURTEJO DA MESETA MERIDIONAL EUROPEAN AND GLOBAL GEOPARK MONTHLY REPORT

www.geoparknaturtejo.com