



In this Issue:

Naturtejo Geopark in the Christmas of Strasbourg during a month
Paleontological Cooperation with the English Riviera UNESCO Global Geopark
i-Danha Food Lab Accelerator Soft Launch Event
Kick-off Meeting of European ESTEAM Project
...and more!

CRUZIANA

GEOPARK NATURTEJO DA MESETA MERIDIONAL - UNESCO GLOBAL GEOPARK - E-MAGAZINE



Geo Stories of our places and people: S. Vicente da Beira

Among the areas of friable shale and and the boulder granite which form Serra da Gardunha mountain we found ruffled lands of São Vicente da Beira. The shale summits separating the basins of Zêzere and Ocreza stands at more than 1000 meters of altitude. Then the granites arise at 1227 m high at the top of Gardunha, the culmination of these lands of Naturtejo UNESCO Geopark. The shale landscape is dribbled by numerous faults which became valleys by streams that run from Gardunha: the WNW-ESE fault of Ribeira da Partida, with Alpine origine, with its conjugated NNE-SSW of Paradanta; a fault system N-S, that includes Vale de Figueiras and Ribeira da Senhora da Orada, the first of each crosses the mountain to North. When these faults enable groundwater circulation they generate important aquifers, the most important is traded by the commercial name Fonte da Fraga; if the circulation goes deeper it feeds on dissolved salts and produces miracles, especially the “holy” spring which gave rise, centuries ago, to the Sanctuary of Nossa Senhora da Orada. This is a very important geological and cultural heritage, one that develops and feeds on the fault of Ribeira da Senhora da Orada. This tectonics is responsible, in large part, for the way the Man has traveled and lived these mountains since Neolithic times. And so ten small places emerged, dominated by São Vicente da Beira, once on the important road between Castelo Branco and Serra da Estrela, from the beginning of nationality a county head, today sleeping at the granite foot of the imposing Gardunha. On the slopes of the mountain range the imposing granite forms dominate with geomonuments such as in Serra dos Patrícios or in Bouças, in the headwaters of the Ocreza River. The mountain is a granite sponge changed, crossed by an intense tectonic which stores the water always drank in the city of Castelo Branco. First were the wells in the mines of Barroqueiro, the ruinous amphitheater that almost surrounds the elegant village of Casal da Serra with Alpine characteristics. Then the storage of the surplus the mountain gives in several dams that populate the city of Castelo Branco. The pastoral past of S. Vicente da Beira noted in a mountain occupation where high altitude settlements such as Cavaco, which is authentic grazing lands where inhabitants of Casal da Serra, until recently, spent seasons in summer. Today 1259 inhabitants live in a vast area of 100 sq km in ten villages. In a lengthy justified visit, the starting point is always the remarkable S. Vicente da Beira. The architectural heritage shows its noble past, when it was county head, with numerous coated houses. In the Centre opens a vast square dominated by the pillory, the former House of Chamber and the Main Church. Here, the Museum of Sacred Art worth a visit, or immerse by the past ambiences once a year, in the medieval fair. The promised archaeological museum, result of a past rich in traces and decades of work of the Study and Defense of Gardunha's Cultural and Natural Heritage Group, is taking a while to establish in order to contextualize the visitor about the numerous grips Time left on this land of Roman forts and roads. But nature is not less important and also deserves the same attention. Therefore, a huge secular stone pine in urban limit aims to compete with the mountain. Then, the overwhelming geological heritage that constitutes the Protected Landscape of Serra da Gardunha.

Finally, and perhaps the most important economic resource of the region, the water. From the construction of the landscape to the miracles of Senhora da Orada, from the drinking water industry to public supply to the district capital, from the mountain that cries of happiness all year to the joy of, even occasionally, stepping on virgin snow in a white dressed mountain. S. Vicente da Beira is a land of water and rocks that shape to the landscape: all this deserves a valued space, so that several touristic products, of which stands out nature and active tourism in Serra da Gardunha, as well as cultural tourism in S. Vicente da Beira and the surrounding villages, can impose as an alternative to inertia.

References

- ANTUNES, I.M.H.R. (2002) - Geologia e geomorfologia da Serra da Gardunha. II Jornadas da Serra da Gardunha, 1p.
- JOSÉ, A. (2016) – GeoMorfologia da Gardunha – Figuras & Formas Graníticas da Serra da Gardunha. Câmara Municipal de Castelo Branco/Geopark Naturtejo.
- PRATA, J.T. (2001) – Sanctus Vicentius. GEGA, 72pp.
- PRATA, J.T. (coord.) (2016) – Dos Enxidos aos casais: histórias e gentes de S. Vicente da Beira. RVJ Editores.
- RODRIGUES, J.C. & NETO DE CARVALHO, C. (2010) – Património Geomorfológico da vertente meridional da Serra da Gardunha (Castelo Branco). Actas/Proceedings do V Congresso Nacional de Geomorfologia (C. Bateira, L. Soares, A. Gomes & H.I. Chaminé (Eds). Associação Portuguesa de Geomorfólogos, Porto, 8-11 Dezembro de 2010: 99-105.
- RODRIGUES, J.C., & NETO DE CARVALHO, C. (2012) – Património geomorfológico da vertente meridional da Serra da Gardunha (Castelo Branco): potencialidades e ameaças. Geomorfologia 2010. Publicações da Associação Portuguesa de Geomorfólogos, 7, APGEOM, Porto: 61-70.
- RODRIGUES, J., CANILHO, S. & NETO DE CARVALHO, C. (2011) – Património Geológico do Geopark Naturtejo: aplicações ao ensino de Hidrogeologia e Geoquímica. In: Antunes, I.M.H.R., Almeida, J.P.F. & Albuquerque, M.T.D. (eds), VIII Congresso Ibérico de Geoquímica, Livro de Actas, Instituto Politécnico de Castelo Branco: 443-448.
The Editor

Carlos Neto de Carvalho
Scientific Coordinator
Geologist

Cover: (Projecto Objectiva: Geopark)



MONTHLY ACTIVITIES



7, 9, 14 e 16 November – Field Trip of River Project: Ponsul River 2016/2017, with students from School Group José Silvestre Ribeiro, Idanha-a-Nova The first field trips related to “Rivers Project – Ponsul River 2016/2017” were promoted to 90 students from 8ªA; 6ªA; 6ªC and 6ªB, from the School Group José Silvestre Ribeiro, Idanha-a-Nova. In these field trips, students could highlight the importance of Ponsul River and monitor 500 meters of river the class adopted. Students performed a set of environmental education activities, such as collecting waste, measuring the water flow, pH and temperature, determining the water turbidity degree and identifying different animal and plant species. Through its action, the Rivers Project seeks to involve the civil community in the promotion of sustainable development at local and regional level, as well as a way of citizenship education. The field trips were promoted by the teacher Arlindo Cardoso and Hugo Oliveira.



8 and 9 November – 1st Meeting of ESTEAM Project Partners in Geopark Idrija – UNESCO World Geopark in Slovenia.

8 and 9 November – 1st Meeting of ESTEAM Project Partners in Geopark Idrija – UNESCO World Geopark in Slovenia.

The first partners' meeting of the European Project of Education in Natural Sciences and New Technologies, ESTEAM, held in Slovenia, in the Geopark Idrija – UNESCO World Geopark. This project seeks to strengthen the teaching methods in Natural Sciences creating a platform of experience between schools, specialists and geoparks combined with outdoor activities and information and communication technologies. The project is co-financed by the European Union's Programme ERASMUS +. The partners in this project are the Centre for the World Heritage of Idrija (Slovenia), the Magma Geopark – UNESCO World Geopark (Norway), the Naturtejo Geopark - UNESCO World Geopark, the University of Ljubljana (Slovenia), as well as pilot schools from Slovenia, Norway and Portugal, including the School Group José Silvestre Ribeiro, of Idanha-a-Nova, as well as the Icelandic company Locatify (products and technological applications). In this first meeting organized by the Centre for the World Heritage of Idrija and Idrija Geopark – World Geopark, was attended by representatives of all the project partners. As for the two Portuguese entities, the Naturtejo Geopark was represented by Manuela Catana, responsible for educational programs, and the School Group José Silvestre Ribeiro of Idanha-a-Nova, by professors André Azeiteiro and Elsa Cantinhas. During two days the partners had the opportunity to present their organizations, to better understand the functioning and timing of the project, working in a group to draw up surveys targeted at teachers, students and future teachers of natural sciences and field trips within the territory of Geopark Idrija – UNESCO World Geopark. The next meeting of the project will take place in March 2017 and will be organized in Portugal, Geopark – UNESCO World Geopark in partnership with School Group José Silvestre Ribeiro.



12 and 13 November – Wines and Liquors Festival in S. Miguel D'Acha. During the Wines and Liquors Festival in S. Miguel D'Acha, Geowine Súbito Chardonnay 2014 was presented, an excellent Geowine production of Naturtejo Geopark which already conquered the audience on this launching day. Acha Doce Geoliquors were also present with their sweet flavors of Naturtejo Geopark: Gold, Earth Bowels, Ore and so many others... with great news: Myrtle! There was no lack of the famous “ginjinha” or hot wine, two Autumn flavors, with Geopark fragrance.



13 to 15 November – i-Danha Food Lab Accelerator Soft Launch Event. BGI – Building Global Innovators – IUL MIT Portugal and EIT Digital, promoters of Global Entrepreneurship Week (GEW2016), decided to decentralize and take one of the most important events in the area of innovation and entrepreneurship out of Lisbon, and joined the Municipality of Idanha-a-Nova. The Municipality of Idanha-a-Nova may seem an unusual choice, but has a huge potential to international investors, especially because of the Program “Fresh Start” based on four pillars, one of which, connected precisely to knowledge and rural innovation and world positioning of the territory in these areas – Idanha Green Valley. Therefore, Idanha-a-Nova received some of the most innovative Startups in Portugal for a meeting of workshops and networking - “i-Danha Food Lab Accelerator Soft Launch Event” – that launched a new Agritech accelerator, specific to rural environments, which main objective is form a consistent community around green technology in order to bring benefits to this project.

The workshops took place in Centro Cultural Raiano and the participants arrived to Naturtejo Geopark in carriage specially prepared for Green Train that went through the magnificent Portas de Ródão Natural Monument. Naturtejo Geopark traveled on this train along with Geocompany Aromas do Valado, Geo do Prado and other companies and entities, foreign experts and many other participants. During the event was still time for networking among Naturtejo Geopark territory startups, like the Geocompany Aromas do Valado and others from various parts of the country connected to green economy.



18 November – Participation in Nature Tourism Days in Guadiana Valley, a new Geopark Project in Portugal.

Naturtejo Geopark attended the conference “Nature Tourism Days in Guadiana Valley”, in Mértola, for the 21st birthday of Guadiana Valley Natural Park. Carlos Neto de Carvalho was invited to present examples of implications of the use and development of Geological Heritage, through the Geopark territory, with measurable results. From these Days might arise a new Geopark project to the Iberian Pyrite Belt.

18 to 20 November – Finding Castelo de Vide, Marvão and Naturtejo Geopark. Mr. Fernando Barbosa brought once again a group of friends and family to perform a program by Alentejo and Naturtejo Geopark. This time 18 people, guided by Nuno Coelho from Incentivos Outdoor, visited Castelo de Vide, Marvão, and took a boat tour and visited Vila Velha de Ródão. They were housed at Hotel Monte Filipe and SPA, in Alpalhão.



19 to 24 November - Activities within Native Forest Week 2016. The Native Forest Week was fostered by the Municipality of Idanha-a-Nova with Naturtejo Geopark support, by promoting plantation through the municipality, involving the School Group José Silvestre Ribeiro, the National Body Scouts and general public for a total of 200 participants. The initiative, under the movement “Plant Portugal” materialized by planting 200 native trees mainly oaks, cork trees, holm oaks and lote trees. The activities intended to preserve and raise awareness for the natural heritage conservation, important not only for the environmental and ecological balance of ecosystems but also economically and socially. The monitors were Manuela Catana, Hugo Oliveira and gardeners from the Municipality of Idanha-a-Nova.

23 November – Paleontologist in Vila Velha de Ródão's School. Carlos Neto de Carvalho was the paleontologist invited by the School Group of Vila Velha de Ródão to spend an afternoon telling stories from a collection of fossils donated by a researcher from Vila Velha de Ródão, Francisco Henriques. 7th grade students were able to handle the fossils and understand the ways the organisms developed, as well as clarify some questions and apply their knowledge.



25 November – 1st year celebration of Geosciences and UNESCO Geoparks Program.

25 November – 1st year celebration of Geosciences and UNESCO Geoparks Program. Naturtejo Geopark celebrated the 1st anniversary of the Geosciences and UNESCO Geoparks Program, participating in the Conference “UNESCO World Geoparks – Science Territories”, in Universidade Nova de Lisboa. Manuela Catana presented a communication “Naturtejo Geopark – UNESCO World Geopark and Science”. The event was organized by the National Commission of UNESCO and the Portuguese Geoparks Forum, within the celebration of the World Science Day for Peace and Development. This Conference was attended by Maria Fernanda Rollo (State Secretary for Science, Technology and Higher Education); Jorge Lobo de Mesquita (UNESCO National Commission); Patrick Mc Keever (IGGP); Elizabeth Silva (Portuguese Geoparks Forum and Science Sector of UNESCO National Commission); representatives from the four Portuguese Geoparks and the Aspiring Estrela Geopark. During the day, was held a show, to students and teachers of Universidade Nova de Lisboa, about the four Portuguese UNESCO Global Geoparks (Naturtejo, Arouca, Azores and Lands of Knights), including the Aspiring Estrela Geopark.



25 de Novembro a 24 de Dezembro – Geopark Naturtejo no famoso Natal de Estrasburgo. Christmas in Strasbourg is one of the oldest and most visited Christmas markets in Europe, with 446 editions. The magic of Christmas brought more than 2 million visitors from various parts of France and from the four corners of the world, attracted by the decorations, lights on the streets and buildings, festive atmosphere and the Christmas culture. This year the market had 300 cottages spread over 12 emblematic sites of Grand Ile de Strasbourg.

The Naturtejo Geopark was installed in the Portuguese Village, representing Portugal, the guest country, in the middle of Place du Gutenberg, where the Christmas traditions were presented and tasted. Idanha-a-Nova organized this participation and brought the cultural traditions of the Portuguese Christmas to Central Europe. Naturtejo Geopark occupied the cottage "Natural Portugal" where thousands of visitors found daily information on the territory, Geotourist Tours and Geoproducts from Aromas do Valado, VóNô, Geoliquor Acha Doce and Geowine Súbito.

Representing Portugal was also the Portuguese Rural Tourism Federation, Historic Villages, Natural.pt and Idanha-a-Nova - Creative City of Music. In addition to Idanha-a-Nova and the Naturtejo region were present North and Alentejo artisans, with crafts in leather, wool, gold as well as true culinary delights of the North, Beira Baixa and Serra da Estrela as olive oil, sausage, cheese, fruitcake, pies, cod and honey. Other highlights were the organic certified products and the bread in stone made live in a wood-burning oven. The Portuguese Village had already received the visit of the Minister of Culture, Luís Castro Mendes and will receive the Secretary of State for Portuguese Communities, Jose Luis Castro.

Several Geoproducts of Naturtejo Geopark and its producers were present in Place du Gutenberg, Acha Doce liquors (1500 litres of hot wine served in first week), Geowine Súbito, Geocakes and Aromas do Valado.

Simultaneously numerous cultural events took place, such as music concerts, exhibitions of painting and photography, as well as a showcase of Portuguese cinema, across several emblematic points of the city of Strasbourg.

Every day more than 30 people from Portugal gave life to the Portuguese Village with the tireless support of Portuguese residents in Strasbourg, from the Permanent Mission of Portugal to the Council of Europe and General -Consulate of Portugal in Strasbourg. Joana Rodrigues coordinated the presence of Naturtejo Geopark in Strasbourg during a full month

25 November to 10 December – Fora do Lugar – Ancient Music Festival. The 5th Edition of Fora do Lugar Festival, in Idanha-a-Nova, Creative City of Music by UNESCO, brought the ancient music to public in unconventional locations, being considered as one of the most original musical events of the national panorama. In addition to music concerts there were also trails interpreted by Monsanto Heritage, in a journey through the “Earth stories in the granite islands”. This year the festival was also in France for two concerts in the Portuguese Village of the Christmas Market in Strasbourg.



29 November to 2 December - Paleontological cooperation with the English Riviera Geopark. The Naturtejo Geopark and the English Riviera Geopark are now closer for its paleontological heritage. The interesting trace fossils of the red rocks of the Permian of Torbay are being examined by Dr Kevin Page, University of Plymouth, and by Carlos Neto de Carvalho, who travelled to English Riviera for some days of field work. The scientific coordinator of the UNESCO Naturtejo Geopark was received in the field by the coordinators of the English Geopark, Melanie Border and Nick Powe, who are giving strong support to the study and interpretation of trace fossils of Torbay, which once had a significant impact on national and international media. The fieldwork pursued by several locations over three days, trying to find out who were the protagonists that left a peculiar signature in the rocks of the English Riviera. This study will be an excellent pretext for the development of a European project around the paleontological heritage of the two geoparks, supported by the Universities of Plymouth and Lisbon.

IMPACT OF GEOPARK IN MEDIA



Radio & TV

13 November (Rádio Castelo Branco) – Naturtejo Geopark and Grutas da Moeda maintain partnership

Newspapers & www

November (Ensino Magazine) – Idanha takes Portugal to Christmas in Strasbourg

November (Raiano) – Thermal springs - health and wellbeing all year

November (Raiano) – Wines and Liqueurs “shine”

November (Raiano) – Naturtejo Geopark reinforces agreement to Grutas da Moeda

November (Raiano) – Idanha takes Portugal to Christmas in Strasbourg

November (O Concelho de Vila Velha de Ródão) - Quercus 2016 award was prized to Eng^o Armindo Jacinto, chairman of the intermunicipal company Naturtejo

5 November (Diário Digital de Castelo Branco) – Partnership takes Naturtejo and Idanha to Fátima

6 November (Reconquista) – Naturtejo Geopark and Termas bet on diversification

6 November (Gazeta do Interior) – Flavors and Music Festival – Wines and Liqueurs give taste to weekend in São Miguel de Acha

9 November (Gazeta do Interior) - Event attracts more than 2 million people annually -

Idanha-a-Nova will represent Portugal at Christmas in Strasbourg

9 November (Povo da Beira) – Idanha-a-Nova takes Portugal to Strasbourg

17 November (Reconquista) - Festival selects finest wines and liquors

17 November (Reconquista) - Naturtejo Geopark reinforces agreement to Grutas da Moeda

30 November (Povo da Beira) – 200 trees planted in Native Forest Week

PROMOTION FOR THE GENERAL PUBLIC



FESTIVAL INTERNACIONAL DE MÚSICAS ANTIGAS

25 NOVEMBRO
10 DEZEMBRO
2016

FORA
DOLUG
AR5°
20
16

25 NOV. 21:30
IDANHA A NOVA
SETE LÁGRIMAS
PORTUGAL

26 NOV. 21:30
MONSANTO
EDUARDO PANAGUA
ESPAÑA

02 DEZ. 21:30
SALVATERRA DO EXTREMO
TRIO PORTENO
PORTUGAL

03 DEZ. 21:30
LADOCERO
MUSICANTES
ESPAÑA

09 DEZ. 21:30
IDANHA A NOVA
DAVE BOYD-ISAAC MULLER
ISRAEL-ÁFRICA

10 DEZ. 21:30
IDANHA A NOVA
KEPA JUNKERA TRIO
ESPAÑA

MÚSICA
HISTÓRIA
GASTRONOMIA
WORKSHOPS
HINI CONCERTOS



FORADOLUGARPT



DU 25 NOVEMBRE AU 31 DÉCEMBRE

STRASBOURG
CAPITALE
DE NOËL
2016

NOËL PORTUGAIS
DE STRASBOURG

naturtejo

GEOPARK NATURTEJO
NO NATAL PORTUGUÊS DE
ESTRASBURGO 2016



10 DEZ. 10.30
MONSANTO
HISTÓRIAS DA TERRA
NO ARQUIPÉLAGO
GRANÍTICO DE MONSANTO

FORA
DOLUG
AR5°
20
16

NATUREZA
COM MÚSICA



www.cm-penamacor.pt

PENAMACORO
Fila
Madeiro
A CHAMA DA TRADIÇÃO
7 a 25 de DEZEMBRO 2016

NATAL
NA
FLORESTA



PROMOTION FOR THE GENERAL PUBLIC



Músicas e Tradições de Natal Oledo 17 e 18 Dezembro 2016

Sábado, 17 de Dezembro

- 16h00 - Inauguração oficial com enredações natalícias, visita guiada ao presépio e casinha do Pai Natal...
- Abertura das taquinhas, início da "1ª Feira da Idanha" e feira franca, criadas para incentivar o comércio em algumas zonas e também para vender o excedente de cada família como (hortaliças, frutas, ovos, artesanato, filhoses e sonhos natal).
- Casinha do pai Natal, oficina dos duendes "Marafona Encantada"
- Magia interativa, ventiloquia e ilusionismo
- 17h00 - **Espectáculo circoense** com malabaristas, salimbancos e animais acrobáticos...
- 18h00 - Espectáculo de Stand-Up Comedy com **"Jorge Serafini"**
- 19h30 - Confeção ao vivo de iguarias de Natalícias.
- 20h00 - **Pedro Mestre canta**: Foliões de Natal, Janelas e Reis
- 21h00 - Espectáculo de encenamento com a fusão das **Aduleiras de Oledo**, a **Filarmonia Idanhense**.

Domingo, 18 de Dezembro

- 09h30 - Missa solene com a participação do **Coro da Freguesia de Nossa Senhora da Conceição de Idanha**.
- 10h00 - Abertura das taquinhas. Início da feira franca em que os vendedores e compradores de Oledo, não têm de pagar portagem e impostos. As feiras francas foram criadas para incentivar o comércio em algumas zonas e também para vender o excedente de cada família como (hortaliças, frutas, ovos, artesanato etc.)
- Anúada com o grupo de gaita-de-foles e percussão, **Comalusa**.
- Animação de rua **"A Casinha do Pai Natal"**
- 15h00 - **Grande tarde de Magia** com a interação de alunos das escolas do concelho e o mago **"Paulo Cabrita"**
- Confeção da **"maior Rabanada de Portugal"**
- 17h00 - Grande espetáculo de **Circo natalício**
- 18h00 - Espectáculo de encenamento com a fusão das **Aduleiras de Oledo**, a **Filarmonia Idanhense**.
- Degustação de bolos-reis e da **"maior Rabanada de Portugal"**
- Entrega de prémio ao exportador com melhor decoração Natalícia.

O Município de Idanha-a-Nova Deseja-lhe Boas Festas

Sabores com Tradição 10 e 11 de Dezembro 2016

Sábado 10 de Dezembro

- 15h00 - Abertura do Certame
- Feira de Produtos Regionais, taquinhas.
- Animação de Rua - Com Bombois "Raia dos Sonhos"
- **Exposição de Anvões de Natal** (Docuuso promovido pela União de Freguesias de Idanha-a-Nova e Alcafozes)
- Confeção de Borrachões, (fornos a lenha presentes)...
- Confeção ao vivo de filhoses e sonhos de natal
- 16h30 - Caminhada Solidária do Centenário (CU)
- Aula de fitness
- 18h00 - Atuação do **Grupo de canto tradicional da USIN**
- 19h00 - Início da **Corrida de S. Silvestre** (CU e associação de atletismo de Castelo Branco)
- **Sopa da Matança** - Tasquinha do Clube União Idanhense
- 22h30 - Entrega de Prémios da Comida S. Silvestre
- Atuação da conhecida artista **"Rebeca"**

Domingo 11 de Dezembro

- 10h00 - Abertura do Certame
- **Chegada do Madeiro do "Menino Jesus"**
- Animação de Rua - "Grupo os Xibatás"
- Feira de Produtos regionais, abertura das taquinhas
- Confeção de Borrachões, pelos fornos a lenha presentes...
- Exposição de Anvões de Natal
- 13h00 - **Sopa da Matança** - Tasquinha do Clube União Idanhense
- Confeção ao vivo de filhoses e sonhos de natal
- 15h00 - **"Meia Dose de Leitão"** - Stand Up Comedy.
- 16h30 - Atuação do grupo **"União Portuguesa"**
- 18h00 - **Concerto de Natal** - Banda filarmónica Idanhense, Idanha-a-Nova, Praça da República (Zona Antiga)

3ª São Silvestre de Idanha-a-Nova (prova de Atletismo no dia 10)

IDANHA-A-NOVA
Praça da República (Zona Antiga)

INFORMAÇÕES / INSCRIÇÕES
Tm: 964 690 530

09 DEZEMBRO PENAMACOR

CONCENTRAÇÃO NA PRAÇA VILA MADEIRO 10H00

ORIENTAÇÃO NA FLORESTA

1ª PROVA DE ORIENTAÇÃO NA FLORESTA

2 A 30 DEZEMBRO

ABERTA NO FIM DE SEMANA 12/11 2016

feira do livro

PENAMACOR
BIBLIOTECA MUNICIPAL

BIBLIOTECA MUNICIPAL DE PENAMACOR
Rua do Conde de Penamacor 1 6200-541 Penamacor
Tel: 271 964 533 | Email: biblioteca@penamacor.pt

PROMOTION FOR THE GENERAL PUBLIC



PENAMACOR 7, 8, 9, 10, 11, 17, 18, 23, 24, 25 DE DEZEMBRO

mercado de Natal

17 DEZEMBRO PENAMACOR
Local a definir 21:00h

Concerto de Natal

ACADEMIA DE MÚSICA E DANÇA DO FUNDÃO
Polo de Penamacor

BIBLIOTECA MUNICIPAL DE PENAMACOR / 9 DE DEZEMBRO / 17H30 / 2016

APRESENTAÇÃO DO LIVRO

Mimi e a fada Flora

de Fernando Catarino

8 DE DEZEMBRO PENAMACOR 13:30H

desfile do madeiro

GRUPO SECA ADEGAS / ANIMADORES ITINERANTES / OS AMIGOS DA CONCERTINA / PIFARADAS E GAITADAS DE ALVARO PESSOA / GRUPO CELTITANDO / MARCHINHA DO BOTEQUIM

PROMOTION FOR THE GENERAL PUBLIC



AÇÃO DE SENSIBILIZAÇÃO SOBRE A IMPORTÂNCIA DO SOBREIRO
espécie florestal autóctone e protegida

Alunos do 1º Ciclo do Agrupamento de Escolas Ribeiro Sanches
PENAMACOR
16 DE DEZEMBRO / 2016
Centro Escolar / 14H30 às 16H30

Logos: U, 96, ICNF, PROVERE, iNature, Câmara Municipal de Penamacor, Centro Escolar, P2000

1º PASSEIO NATAL NA FLORESTA
18 DE DEZEMBRO / 2016
PENAMACOR

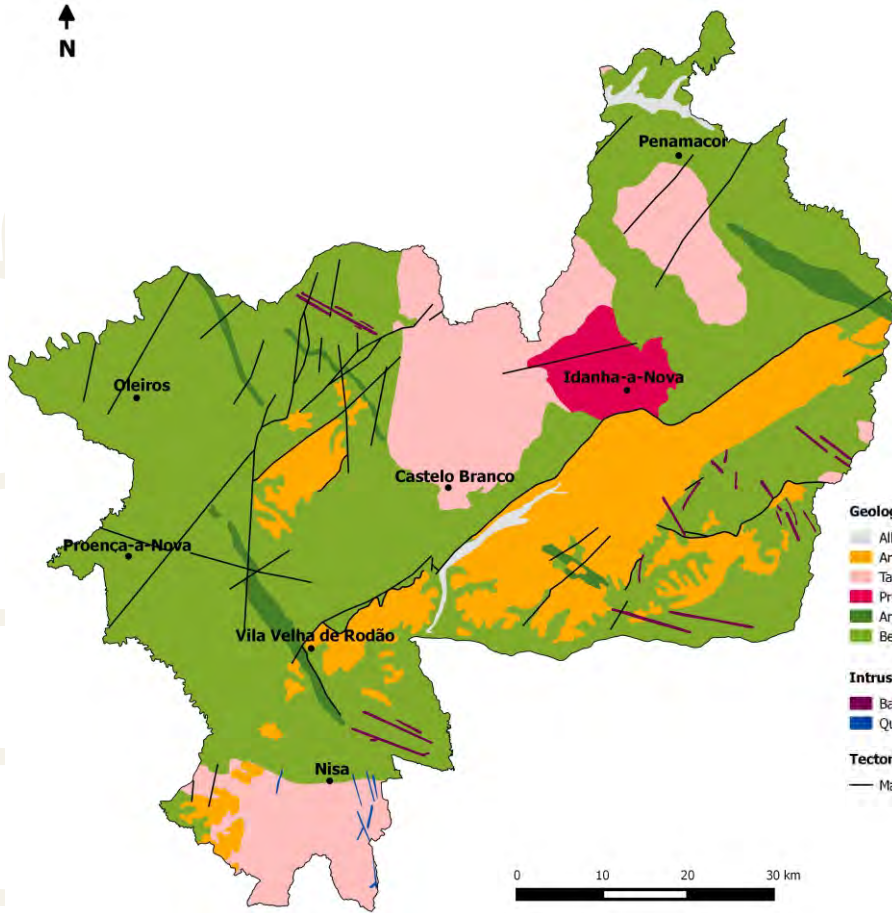
INÍCIO/PONTO DE ENCONTRO: 9:00h Museu Municipal
1ª ETAPA / Percurso: 7 Km Vila e Cimo de Vila
Mesa Municipal, Geociclo Miradouro da Casa do Ramalho e Geossítio Minas do Pardo
ALMOÇO: Pílas 13:00h / Vila de Penamacor

REFORÇO ALIMENTAR: Produtos locais

INSCRIÇÕES (até 10 de dezembro)

10,00€ Seguro + Reforço alimentar + Almoço / 3,00€ Seguro + Reforço alimentar
CÂMARA MUNICIPAL DE PENAMACOR: Tel: 277 988 104 / E-mail: geral@cm-penamacor.pt
ROTAS RAZES: Tel: 261 887 070 / E-mail: rotas@cm-penamacor.pt

Logos: U, 96, PROVERE, iNature, Câmara Municipal de Penamacor, Centro Escolar, P2000



Geological Formations (Ma-Million years)

- Alluvium and fluvial terraces - Plistocene-Holocene (1Ma-present)
- Arkoses, breccias and conglomerates - Eocene-Pliocene (50-2.6Ma)
- Tardi-Variscan orogenic granites (315-300Ma)
- Pre-Variscan granodiorites (480-472Ma)
- Armorican Quartzite and schists - Ordovician-Lower Silurian (488-435Ma)
- Beiras Group (schists and greywackes) - Neoproterozoic (610-542Ma)

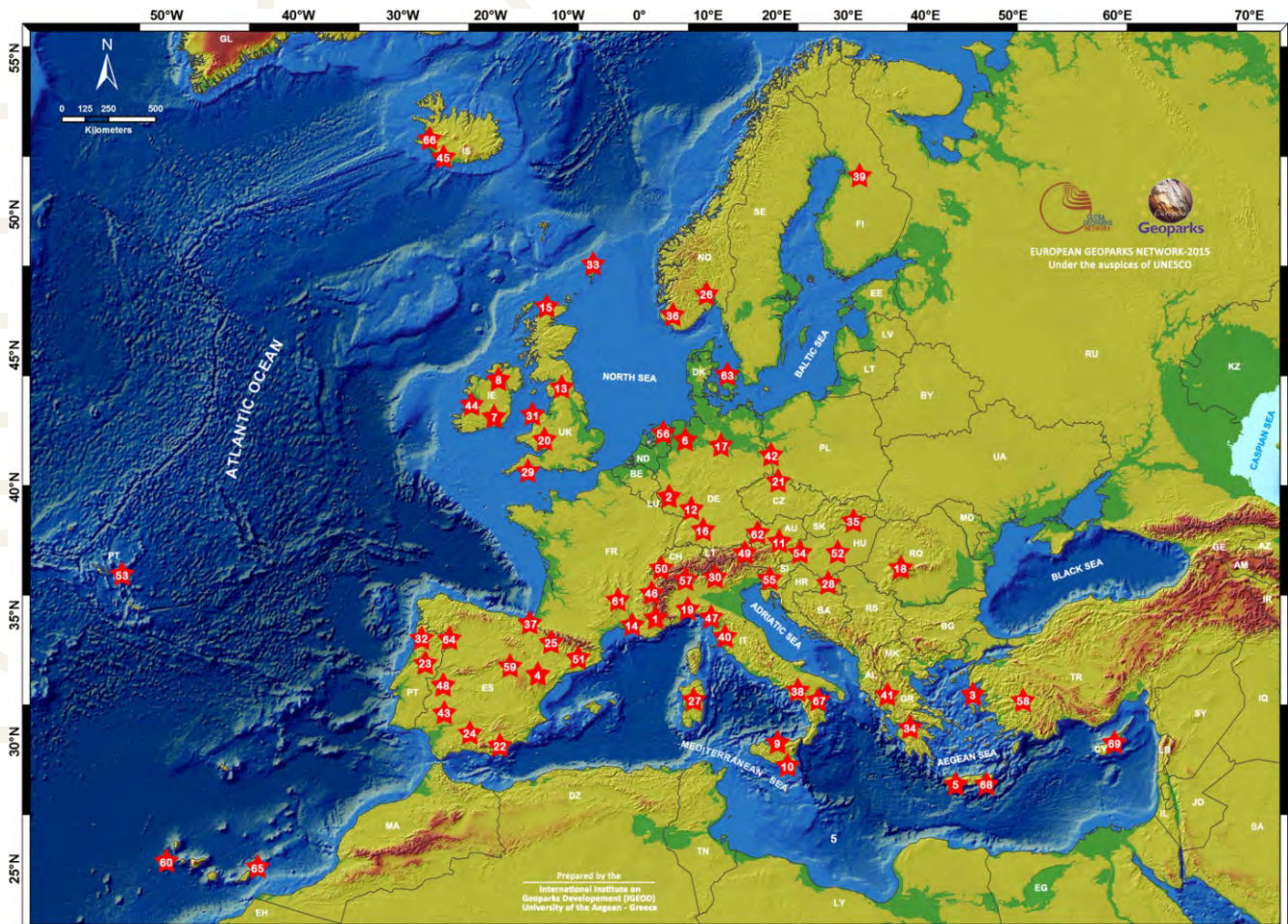
Intrusive rocks

- Basic rocks, aplites and pegmatites
- Quartz

Tectonic

- Main faults

Geoparks: Geology with human face





Edition - Geopark Naturtejo, 2016
Coordination- Carlos Neto de Carvalho
Texts - Carlos Neto de Carvalho, Joana Rodrigues,
Manuela Catana e Hugo Oliveira, Rita Jordão,
Município de Idanha-a-Nova
Photos - Carlos Neto de Carvalho, Joana Rodrigues,
Manuela Catana e Hugo Oliveira
Clipping - Alice Marcelo e Carla Jacinto
Translation - Carla Jacinto
Design - Layer [Design and Print Studio]
Editing - Joana Rodrigues



CRUZIANA

GEOPARK NATURTEJO DA MESETA MERIDIONAL EUROPEAN AND GLOBAL GEOPARK MONTHLY REPORT

www.geoparknaturtejo.com