



### **In this issue:**

European Chart for Sustainable Tourism in the Geopark's territory  
Portuguese "Alto Tejo" Conference in Vila Velha de Ródão  
Geopark in Festival Bike Portugal  
International School Library month celebrated in the Geopark  
**And more!!**

# **CRUZIANA**

**GEOPARK NATURTEJO DA MESETA MERIDIONAL - UNESCO GLOBAL GEOPARK - E-MAGAZINE**



## Geo-histories of our places and people:: Louriçal do Campo

“If the Granite Mountains, by the variety of forms outweigh other different geological nature and formation, Gardunha seems perfect showing off fancy at this point and more original than the others. Besides living rocks, featuring in slabs and ranks, completely bare, especially in abrupt and large sites, we find those landmarks forming rock piles, boulder fields, and scarps, hills or bollards, cliffs, rocks and peaks; as well as countless rocks and cliffs with thousand shapes and sizes scattered throughout the hills.” So described by the Jesuit M. Martins in 1910, the great geomorphological richness of Serra da Gardunha in the prestigious scientific journal Brotéria, who was first printed in São Fiel College at Louriçal do Campo. Jesuit College from 1863, one of the most prestigious educational institutions in Portugal in the last decades of the 19th century, with special focus on the natural sciences, which has provided us distinguished students with particular reference to the Nobel Prize António Egas Moniz, it would close doors in 1910, with the deployment of the Republic and alienation of religious orders' assets, and re-open as juvenile reformatory. Today this great space at the base of the “refuge” mountain, with the close by located Church, is silence waiting for better use. The Gardunha Route or the mountain biking routes, starting from the bike center Louriçal do Campo, leads us to explore a stunning and wild mountain, made to discover over time. Here there are no asphalted roads. We discover in the Protected Landscape of Serra da Gardunha, a Natura site, magnificent rocks protected by law, such as the intriguing boulder with polygonal cracking or the fractured block, or others already recognized by Jesuits, as the Overhanging Stone or the Friar's Head. In Faldas da Serra, between the Ocreza River and Ribeira da Água D'Alto stream, the denudation process of a weathering front that develops a chaos of boulders with the most diverse ways is particularly evident. Worth climbing the Old Castle, at its 1051 meters in altitude, to understand that the intense tectonic activity that marked decisively these granites during the Variscan Orogeny, conditioned the exposure of granite forms. In this crest of cyclopean rocks we find the origins of Louriçal do Campo settlement, a pre-Roman fortification that defies the imagination by its near-vertical arrangement. At the base, a small plateau always dressed in green and possessing the ruin of a house built around a massive granite “egg”. All around several granite morphologies that make the Old Castle a Geomonument of UNESCO Naturtejo Geopark. Along the ridge the cover is alpine, with broom bushes and the Echinopartum lusitanicum, an endemic species. As for the fauna, the weasel (Martes foina), also known as Gardunha, is the right mascot for this mountain. In this small region with 22,31sq km dominated by the steep slope of Gardunha, Louriçal do Campo nestles in its foothill and the attached places Torre and São Fiel, for a total of 636 inhabitants. The Church of S. Bento and the Chapel of Nossa Senhora da Conceição, with a beautiful altar piece, deserve a visit. But Louriçal do Campo is Gardunha, with a huge potential for nature tourism.

The Solstice – Nature Festival is an event that benefit from this privileged stage. From walking to Trail run, from mountain-biking to a downhill track that does not yet exists, from climbing to horseback or air balloon riding, nowadays only in the imagination, from geocaching to nature photography, the protected landscape of Serra da Gardunha may be valued in different ways by various features. But this cannot happen without recovering the old São Fiel College, as a Boutique Hotel dedicated, as in times, to Nature, offering a door to discover and interpret Gardunha's Heritage, and as a table for agricultural products and local flavors.

## References

- ANTUNES, I.M.H.R. (2002) - Geologia e geomorfologia da Serra da Gardunha. II Jornadas da Serra da Gardunha, 1p.
- MARTINS, M. (1910) – A Serra da Guardunha. Brotéria.
- RODRIGUES, J.C. & NETO DE CARVALHO, C. (2010) – Património Geomorfológico da vertente meridional da Serra da Gardunha (Castelo Branco). Actas/Proceedings do V Congresso Nacional de Geomorfologia (C. Bateira, L. Soares, A. Gomes & H.I. Chaminé (Eds). Associação Portuguesa de Geomorfólogos, Porto, 8-11 Dezembro de 2010: 99-105.
- RODRIGUES, J.C., & NETO DE CARVALHO, C. (2012) – Património geomorfológico da vertente meridional da Serra da Gardunha (Castelo Branco): potencialidades e ameaças. Geomorfologia 2010. Publicações da Associação Portuguesa de Geomorfólogos, 7, APGEOM, Porto: 61-70.
- SILVA, R.M. (2005) – Geomorfologia granítica da Serra da Gardunha (Fundão). Geonovas, 19: 89-114.

de Carvalho  
Scientific Coordinator  
Geologist

Cover: (Projecto Objectiva: Geopark)



# MONTHLY ACTIVITIES

**29 September – Geopark region integrates European Chart for Sustainable Tourism.** The initiative came from the Municipalities of Almeida, Penamacor and Sabugal and covers a wide range of agents, which were mobilized and involved in the certification that recognizes the strategies of sustainable tourism in protected areas in Europe. The European Chart for Sustainable Tourism 'Gata-Malcata Terras do Lince' was so validated in Brussels after several months of meetings/forums, action plan and strategic document preparation, and after the auditor's visit last May.

For the Mayor of Penamacor – António Luís Beites Soares – this is a step of utmost importance to territorial cohesion and to the touristic development of this territory. The cooperation and networking that this project requires for its sustainability have been decisive and it is expected to be perpetuated, because the 'award' is valid for five years and after that period all the work will be reevaluated. For now the Mayor of Penamacor not only praises the certification awarded by EUROPARKS Foundation, but also underlines the unconditional support of the partners and entities involved, in particular Naturtejo, organized by thematic groups, these being the main driving forces and region ambassadors.

The action plan of CETS 'Gata-Malcata Terras do Lince' includes several projects leadered by the following performers: Câmara Municipal de Almeida; Câmara Municipal de Penamacor; Câmara Municipal de Sabugal; Territórios do Côa – Associação de Desenvolvimento Regional; ICNF – Instituto de Conservação da Natureza e Florestas/Reserva Natural da Serra da Malcata; ADSI - Agência de Desenvolvimento para a Sociedade da Informação, Agrupamento de Escolas Ribeiro Sanches - Penamacor; Associação de Municípios da Cova da Beira; Associação Empresarial do Sabugal; Associação Iberlinx; Associação Transcudania; Fórum Florestal – Estrutura Federativa da Floresta Portuguesa; Instituto Politécnico da Guarda; Quinta dos Rebolais; Refúgio no Campo; Turismo Centro de Portugal, E.R.; Universidade da Beira Interior, and Viúva Monteiro & Irmão, Lda. In addition to these performers this recognition CETS necessarily depended on the synergy with other entities and projects of utmost importance in the territory, as Naturtejo Geopark, Associação das Aldeias Históricas de Portugal, the NERGA, Associação Empresarial da Beira Baixa, CCDRC, DRAP-C, Instituto Politécnico de Castelo Branco, MEIMOACOOP, CRL, Pró-Raia, among others.

For the community of entities involved in the European Chart for Sustainable Tourism 'Gata-Malcata Terras do Lince' it represents the recognition of a high potential territory, where Nature and Landscape harmonize in a deep dialogue with the magnificent products and the art of hospitality of the local people.

**1 October – World Day of Music celebrated in the Geopark.** A group of 22 people of the Stella Vitae Choir from Lisbon were housed at the Hotel Fonte Santa. On the 1st October, World Day of Music, the Stella Vitae Choir and the local Singing Group of ADEPAC from the village of São Miguel de Acha participated in the concert "Traditional Popular Music in São Miguel de Acha", held at Centro Cultural Raiano. The event intended to celebrate musical tradition of São Miguel de Acha, a record that crosses the scholar with the popular and combines new approaches among the choral and instrumental components.

**1 October – Programme 'By Lands of Tejo River'.** A group of 10 civil engineers from Brazil accompanied by a Professor from the Technology School of the Polytechnic Institute of Castelo Branco made a boat trip and had lunch at the restaurant Bar do Cais, being accompanied by Nuno Coelho from Incentivos Outdoor.

**1 October – Fossils Trail Programme.** The Argon Travel tour operator from Almada brought 55 people from the Senior University of Almada to the territory to perform a tour in Penha Garcia for the PR3 IDN-Fossils Trail with passage through the Templar Castle, Ichnological Park (fossils) and watermills. The Group was accompanied by Jorge Costa of the tourist company partner Actigeo.

**7 de Setembro – Encontro "Ciência por quem a faz e por quem a ensina".**

**5-7 October – Trilobite Trail Programme.** The tour guide João Geraldês from Casa do Forno Geo-Resort guided 2 people on a tour to the Ichneological Park of Penha Garcia; a paleontological experience on the "Fossils trail", by the gorge of the Ponsul River to the discovery of primitive ocean life; Visit the Interpretation Centre of Biodiversity "Terras de Idanha" and birdwatching in Fragas de Segura; Gold Mining workshop in Salvaterra do Extremo.

The next day Nuno Coelho from Incentivos Outdoor accompanied the program with a visit to the Rock Art Interpretation Center of Vale do Tejo and the Fossil Trunks of Vila Velha de Ródão, a geological experience in a boat trip in the magnificent Natural Monument of Portas de Ródão and a visit to the Natural Geomonument of Portas de Almourão. They were housed in the Geo-Hotel School of Monsanto.



**5 to 7 October – “Autumn in Geopark” Programme.** The engineer Fernando Barbosa brought once again a group of friends to carry out a program by Naturtejo Geopark. The Group of 26 people stayed in Hotel das Amoras and was accompanied by Daniel Gonçalves on the 1st day and João Geraldês on the 2nd day. The program took place in the Municipalities of Óleiros and Proença-a-Nova. They started with a visit to the traditional village of Isna and the secular chestnut trees. The wild chestnut tree of the parish of Isna, with approximately 200 years old, has high ecological importance despite not being protected. The chestnut, the fruit from these secular trees, is of high quality and greatly appreciated in the local cuisine, being a potential economic complement for this region for many years. In the village there is a thick chestnut tree that stands out from the rest not by the high it reaches, but by having a trunk with a perimeter greater than 5 m, of secular antiquity. Then they visited the Church of Estreito, built in local rock, the quartzite, removed from Serra do Muradal, whose imposing central façade has a great Bass-Relief showing the local culture connected to land. Then off to the viewpoint of Zebro located in a quartzite cliff where the dizzying panoramic widens through the Valley of Ribeira das Casas da Zebreira, which runs, 200 m below. After that GeoRota do Orvalho with a visit to Fraga da Água D'Alta and to the traces of the Laurissilva evergreen forest (about 3 Km from the pedestrian trail, with medium difficulty, just due to the inclination of the Waterfall descent). The viewpoint of Mosqueiro is an excellent geomorphological viewpoint at the top of Penedo das Sardas, at 666 meters high, and 300 meters above the Zêzere Gorge, with extensive perspective above the main relieves: the Cordilheira Central: granites of Serra da Gardunha and Serra da Estrela, with a privileged view to the magnificent glacial valley of Alforfa; the quartzite ridges of Serra do Muradal and Penedos de Góis, to NW; the spectacular meanderings of Zêzere River; Schist mountains of Açor (N), Lousã (NW) and Cabeço Rainha (SW). This viewpoint highlights not only the rocky outcrops, but also shrubby vegetation consisting predominantly by heliophytic scrub, of which stands out the rockrose (*Cistus ladanifer*), the kindling (*Chamaespartum tridentatum*) and the gorse (*Ulex* sp).

The next day the group visited the Living Science Centre of Forest (Proença-a-Nova) where was held the workshop on the theme of honey. Finally they traveled to Figueira Schist Village. Here the farm animals such as chickens, sheeps and goats live nearby, and the locals still bake their bread in the community oven. A village with all its constructions made of schist, flat and easy walk.



**9 October - MTB Marathon Trilhos da Raia.** About 700 bikers from all over the country and from Spain filled Idanha-a-Nova to the iconic Mountain Bike Marathon "Trilhos da Raia". The race crossed the landscapes of Penha Garcia, Monsanto, Medelim and Idanha-a-Velha, in 95 km and 55 km routes, an organization of Cycle Touring Association of Idanha-a-Nova and the Municipality of Idanha-a-Nova with the support of Naturtejo Geopark.

**11 October - Another Marco Polo Group.** A group of 25 Germans shown interest in visiting the Geopark and performed a program prepared by Naturtejo. They started with the kayak tour to Ilha das Virtudes by Portas de Ródão in Vila Velha de Rodão, where they could see up close the Gryphons who live by those rocks. Then, they had lunch in the restaurant Vale Mourão, a typical restaurant in Foz do Cobrão. To end the visit, they visited Foz do Cobrão Village and ended up with gold mining on the Ocreza River banks. This visit was monitored by Nuno Coelho, with the accompaniment of a trainee Lisa Feist who did the introduction of the Geopark in German.



**12 October - Portuguese High Tejo Conference.** Naturtejo Geopark attend the "Portuguese High Tejo and International Tejo Conference", in Casa das Artes e Cultura do Tejo, in Vila Velha de Ródão, where several researchers and other entities dedicated to the region, discussed the promotion of natural and cultural heritage of the Tejo river. Carlos Neto de Carvalho exposed the need to bet on the development of differentiating tourist products to build the Naturtejo Geopark destination.

**13 October - Technical Meeting of Portuguese Geoparks in Guarda.** Portuguese Geoparks met in Guarda for the presentation of Estrela Geopark project. Carlos Neto de Carvalho represented Naturtejo Geopark and exposed his concerns about the implications of this project, given its geographical and geological proximity with Naturtejo Geopark.



**14 October - Closer cooperation with Villuercas-Ibores Jara Geopark.** Manuela Catana visited Villuercas-Ibores Jara Geopark (Spain) where Jose Maria Barrera and Javier-Lopez received her, in Cañamero, to learn more about the educational project of the geopark, called "Geocentros". They visited one of the "Geocentros" in the geopark, the Education Center Fausto Maldonado de Cañamero. There, the Director of this educational institution showed the Center, spoke about the activities and works on display made by students, where the geopark's natural and cultural heritage is very well present. Finally they met at the headquarters of APRODERVI, in Cañamero, to analyze educational resources and establish some future educational actions in partnership between Iberian Geoparks.



**14 to 16 October - Geopark in Festival Bike Portugal.** It took place in Santarém, in the National Exhibition Centre, the 13th edition of the Festival Bike Portugal, the biggest event in the country dedicated to the bike and all that in a professional, sports or leisure manner, are linked to this sector, dedicated to importers, retailers, distributors, event planners, media, professional and amateur athletes, and received a total of 25.650 visitors. Naturtejo Geopark, represented by Carla Jacinto, performed at the BIKOTEL space, along with accommodation units, promoting the territory, with emphasis on the accommodation, routes, trails and infrastructures for the practice of mountain biking. It is worth highlighting the launch of the new BIKOTEL catalogue "Discover Portugal by Bike", with the destination Naturtejo Geopark including accommodations certified as BIKOTEL.



**15 October - Celebration of 50 years of the company Abastena in the Orvalho GeoTrail.** The Abastena Company celebrated its 50th anniversary with a visit of near 200 people, among employees, associates and guests, to the Geomonument Fraga da Água D'Alta recently sponsored by the company. The trail by GeoRota do Orvalho started at the Parish Council of Orvalho with a few welcome words from the Tourism Councilor, Paulo Brás, and with the presentation of a film about Oleiros, recently awarded. The guided visit was accompanied by Carlos Neto de Carvalho and by the Professor Pereira Coutinho whom, in a rainy morning, made a foray to the geological and botanical landscape of the Geomonument. The lunch was waiting for the blessed ones in the Mosqueiro Viewpoint where, besides delighted in the landscape above Zêzere Gorge, attendees enjoyed a beautiful typical outdoor meal and birthday cake.

**15 October - Appalachian Trail gathered more than 100 participants.** 120 hikers went through the 2nd part of the Portuguese International Appalachian Trail (GR 38 Great Randonee Muradal-Pangaea). The day began quite cloudy, at 08.30h at Largo de Vilar Barroco where the 12 Km route that correspond to Vilar Barroco-Orvalho started. Due to the difficulty of the route, especially at the end, this included the monitoring of the voluntary firemen of Oleiros throughout the path. In this second part of the trail, the highlight goes to Fraga da Água D'Alta, consisting of a set of waterfalls of which the largest reaches a height of 25 meters. Also the place of arrival, where the lunch took place represents a Geomonument. The Cabeço do Mosqueiro, atop Penedo das Sardas, 666 meters high and 300 m above the Zêzere Gorge provides a breathtaking panoramic view. Opened in March 2015, this trail has attracted many hiking lovers. In April, 200 participants went through the first part of this trail belonging to the most famous network of hiking routes in the world, with the seal IAT (International Appalachian Trail).

**19 October - Visit from Managers of Moeda Caves.** Naturtejo Geopark welcomed the visit of the managers of Grutas da Moeda, Carlos Silva and Danilo Guimarães, to consolidate the existing partnership. In addition to the already existing collaboration at the level of promotion and educational programmes, future actions were planned, in many different areas, like Geotourism, Promotion, Local Development and Guide of the Portuguese Geological and Mines Sites, which both are partners. Those Managers were welcomed by Armindo Jacinto and Joana Rodrigues.

**22 October - Offroad Raid Trilhos do Estreito.** This year the TT Raid "Trilhos do Estreito" brought 300 participants wishing to experience the landscapes, the Trails, the hidden places of Estreito region and taste traditional cuisine.





**22 and 23 October – Tour by Geopark Naturtejo.** 38 students from Senior University of Santarém visited the Naturtejo Geopark, hiking through the always disturbing path of Boulders Trail in Monsanto, and the historical Village of Idanha-a-Velha. The students were accompanied by Jorge Costa of Actigeo.



**24 to 26 October – Presentation of Rivers Project – Ponsul River 2016/2017.** On these days took place the presentation of the "Rivers Project – Ponsul River 2016/2017" for the classes of 8thA and 8thB of José Silvestre Ribeiro School of Idanha-a-Nova. In these sessions, students get to know this project's mission, which assigns special focus to public participation to ensure the preservation and improvement of riparian areas and water quality, as a way to promote sustainable development. Students also learned that the Rivers Project, despite being local, is also supported by international guidelines established by the Sustainable Development Goals of UNESCO (2015-2030); The Earth Charter (UN); and the Water Framework Directive (European Union). Arlindo Cardoso and Hugo Oliveira boosted these classes.



**25 October – Training Course in Termas de Monfortinho.** The training course "Introduction to Hydrogeology of Termas de Monfortinho" for employees of the Thermal Spa aimed to raise awareness on the complex process of groundwater mineralization and to the richness of the thermal springs of Termas de Monfortinho, establishing relationships between physicochemical properties and how they are used in health care. The geological heritage of the Geopark Naturtejo was introduced, followed by an Acqua Challenge, a blind tasting of thermal waters of the Geopark, bottled waters of the Geopark and outside, silicate water, sulphur, ferruginous... a test the staff overcame, naturally!



**27 October - International School Library Month celebrated in the Geopark.** In the International School Library Month, the Naturtejo Geopark was in the library of the Primary and Secondary School Pedro da Fonseca, in Proença-a-Nova, contributing to the collection, with publications edited or supported by Naturtejo Geopark. A welcoming and full of projects space, where teachers were challenged to collaborate again on more Educational Programs this school year. Paulo Branco and Joana Rodrigues were received by the School Principal, Maria João Pereira and by the responsible for the library, Isabel Garcia. The Naturtejo Geopark was also marking the International School Library Month in the Primary and Secondary School Ribeiro Sanches, in Penamacor, disclosing the territory, presenting its activities and contributing to the collection of the library with publications edited or supported by Naturtejo Geopark. New ideas and open doors for partnership were disclosed for the near future. There, Mariana Vilas Boas and Joana Rodrigues were received by the Librarian Teacher Antonieta Salgueiro.



**28 to 30 October – Naturtejo Geopark in Portugal Agro.** Naturtejo Geopark attended the 3rd edition of Portugal Agro – International Regions Fair, Agriculture and Agri-food, at FIL, in Lisbon, together with the Intermunicipal Community of Beira Baixa. This fair is an important meeting point of professional and business sector, from hotel and restaurant management, retail, to the distribution of 100% national products. Thousands of visitors have been able to contact directly with the producers, tasting products and get to know the region by Paulo Branco, representing Naturtejo Geopark.

# IMPACT OF GEOPARK IN MEDIA



## Radio & TV

- 12 October (RTP Portugal em Directo) - "Portuguese High Tejo and International Tejo Conference", in Casa das Artes e Cultura do Tejo, in Vila Velha de Ródão
- 10 October - (Rádio Castelo Branco) - Tejo River discussed in Vila Velha

## Newspapers & www

- October (Magazine Passear) - Appalachian Trail
- October (Bike Magazine Supplement) - Discover Portugal by Bike
- 5 October (Gazeta do Interior) - 700 ride Mountain Bike Marathon Trilhos da Raia
- 5 October (Gazeta do Interior) - Vila Velha de Ródão - Conference studies the past and the future of Tejo River
- 6 October (Reconquista) - Trilhos da Raia bring 700 to Idanha-a-Nova
- 14 October (Diário de Coimbra) - Abastena closes celebrations and reveals environmental project

# SCIENTIFIC CONTRIBUTIONS FOR THE GEO PARK AND THE GEOSCIENCES



- Henriques, F., Caninas, J.C., Neto de Carvalho, C. & Chambino, M. – Exploração aurífera no rio Ponsul (Castelo Branco): novos dados. In Vilaça, R. (Ed.), Actas do 2º Congresso Internacional de Arqueologia da região de Castelo Branco. Sociedade dos Amigos do Museu de Francisco Tavares Proença Júnior, Castelo Branco, 307-323.

# PROMOTION FOR THE GENERAL PUBLIC



- Rodrigues, J.C. – Naturtejo UNESCO Global Geopark 10 year of geoconservation (2006-2016). Progeo News, 2&3: 3-4.
- Pereira, G. – Em terras das cobras pintadas. Espiral do Tempo.



# PROMOTION FOR THE GENERAL PUBLIC



**ateliês**  
**Vila Madeiro**  
 NATAL NA FLORESTA  
 Trabalhos manuais, elaborados com materiais naturais e reciclados, para decoração das ruas da vila  
**NOVEMBRO 2016**  
**PENAMACOR**  
 CASA DO POVO: segundas, quartas e sextas-feiras, das 20:30h às 22:30h, com início dia 2 de novembro

**participe!**

**FELIZ NATAL!**

INFORMAÇÕES:  
 gdo.cultural@cc-penamacor.pt  
 Tel.: 277 294 105

DU 25 NOVEMBRE AU 31 DÉCEMBRE  
**STRASBOURG**  
**CAPITALE**  
**DE NOËL**  
 2016

**GEOARK NATURTEJO**  
**NO NATAL PORTUGUÊS DE**  
**ESTRASBURGO 2016**

NOËL PORTUGAIS DE STRASBOURG

visit Portugal

**Conferência Internacional**

**Geoparques Mundiais da UNESCO**  
**Territórios de Ciência**

25 NOVEMBRO 2016

1030 – 1040 **Cerimónia de Abertura**  
 Membros das Delegações Estrangeiras, Prof. Doutor Augusto Santos Silva\*  
 Secretário de Estado da Ciência, Tecnologia e Ensino Superior, Prof. Doutora Maria Fernanda Brasil  
 Secretary of the International Geoscience and Geoparks Programme – UNESCO, Prof. Patricia J. Mc Keever  
 Presidente Substituto da Comissão Nacional do UNESCO, Embaixador Jorge Lopes de Mesquita  
 Embaixador da UR, / CIES-NEVA  
 Membro da Comissão Prof. Doutora Maria José Rato – Direção da CIES-NEVA

1040 – 1045 **"Programa Internacional de Geociências e Geoparques da UNESCO - IGGP"**  
 Prof. Patricia J. Mc Keever – Secretária do IGGP

1045 – 1048 **"Natal Português de Geoparques Mundiais da UNESCO: compromisso para um trabalho em rede"**  
 Eng. Nuno de Sá – Diretor Científico – Comissão Nacional do UNESCO / Coordenador do Fórum Português dos Geoparques Mundiais da UNESCO

1048 – 1100 **"Geociências ao serviço da Sociedade: o papel do Comité Nacional para o Programa Internacional de Geociências da UNESCO - IGGP"**  
 Prof. Doutor Aníbal Sá – Presidente do Comité Nacional para o IGGP / Coordenador da Câmara UNESCO "Geoparques, Desenvolvimento Regional Sustentável e Estilos de Vida Saudáveis"

1100 – 1105 **Pausa**

1105 – 1140 **Vídeo promocional**

1140 – 1240 **"Relatório do Ano da Mesa Meridional Geoparque Mundial da UNESCO"**  
 Eng. António Jacinto – Presidente do Conselho de Administração da Naturtejo, EAF (ou seu representante)

1240 – 1245 **Vídeo promocional**

1245 – 1248 **"Anexo Geoparque Mundial da UNESCO"**  
 Eng. Margarida Ballester – Diretora da Associação Geoparques Avoçor (ou seu representante)

1248 – 1400 **Anexo live**  
 Membro da Prof. Doutor Aníbal Sá – Presidente do Comité nacional para o IGGP / Coordenador da Câmara UNESCO "Geoparques, Desenvolvimento Regional Sustentável e Estilos de Vida Saudáveis"

1400 – 1405 **Vídeo promocional**

1405 – 1410 **"Ações Geoparque Mundial da UNESCO"**  
 Dr. Luís Botelho – Presidente da Direção do Geoparque Açores (ou seu representante)

1410 – 1415 **Vídeo promocional**

1415 – 1430 **"Tema de Trabalho Geoparques Mundiais da UNESCO"**  
 Eng. Duarte Moreira – Presidente da Direção da Associação Geoparques Terra de Coimbra (ou seu representante)

1430 – 1440 **Vídeo promocional**

1440 – 1450 **"Aparante Geopark Estrela"**  
 Dr. Consalvo Mendes Iri – Presidente da Associação Geopark Estrela (ou seu representante)

1450 – 1700 **Debate e encerramento**

18h 00  
**Audifonia 1**  
 9h30 às 18h00

**JORNADAS PRÁTICAS DE TURISMO DE**  
**NATUREZA NO VALE DO GUADIANA**

Mértola, 18 de novembro  
 Centro Polivalente de Divulgação da Casa do Lanterna

IGNF

NEUTOMA

# PROMOTION FOR THE GENERAL PUBLIC

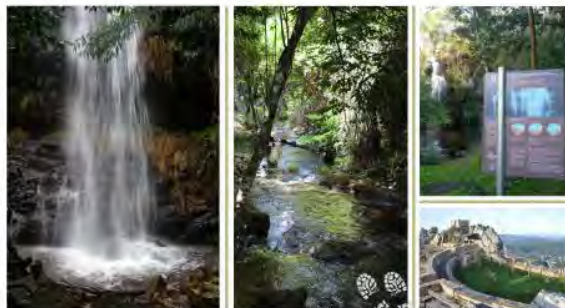


## Caminhada Interpretativa\*

*Pelos trilhos da Fraga de Água D'Alta*

**15 de Outubro**  
**Orvalho - Oleiros** **2016**

\* Enquadrada no encerramento das comemorações do Cinquentenário da Abastena — Sociedade Abastecedora de Madeiras, Lda.



### PROGRAMA

- 08:30 Concentração dos Participantes  
*Junta de Freguesia do Orvalho*
- 09:00 Briefing
- 09:30 Início do Percurso Interpretativo
- 12:30 Almoço convívio  
*Miradouro do Cabeço Mosqueiro*
- 15:00 Encerramento das Comemorações

Para aqueles que apresentem mobilidade reduzida há a possibilidade de realização de uma visita guiada ao espaço da Fraga de Água D'Alta

TIPO DE PERCURSO: Linear | EXTENSÃO APROXIMADA: 6 Km | DIFICULDADE: Média

INSCRIÇÃO: Gratuita mas obrigatória, até 7 de Outubro através do e-mail: [ggfa@abastena.pt](mailto:ggfa@abastena.pt) ou telemóvel: 918.957.350

LIMITE DE INSCRIÇÕES PARA A CAMINHADA: 150 participantes

RECOMENDAÇÕES: Os participantes deverão utilizar calçado e roupa adequados à actividade e às condições meteorológicas.

### ORGANIZAÇÃO:



### COM O APOIO:



**XVII MARATONA BTT TRILHOS DA RAVA 09-OUT-2016 CATEDRAL DO BTT**

MARATONA — 95 KM  
1/2 MARATONA — 55 KM

NÍCIO INSCRIÇÕES 16 JULHO 2016

NÃO SÓCIOS — € 22,00 SÓCIOS — € 20,00  
OFERTA DO JERSEY OFICIAL

LIMITE PARTICIPANTES 800

www.acin.com.pt

**XVII PASSEIO TT TRILHO ESTREITO**

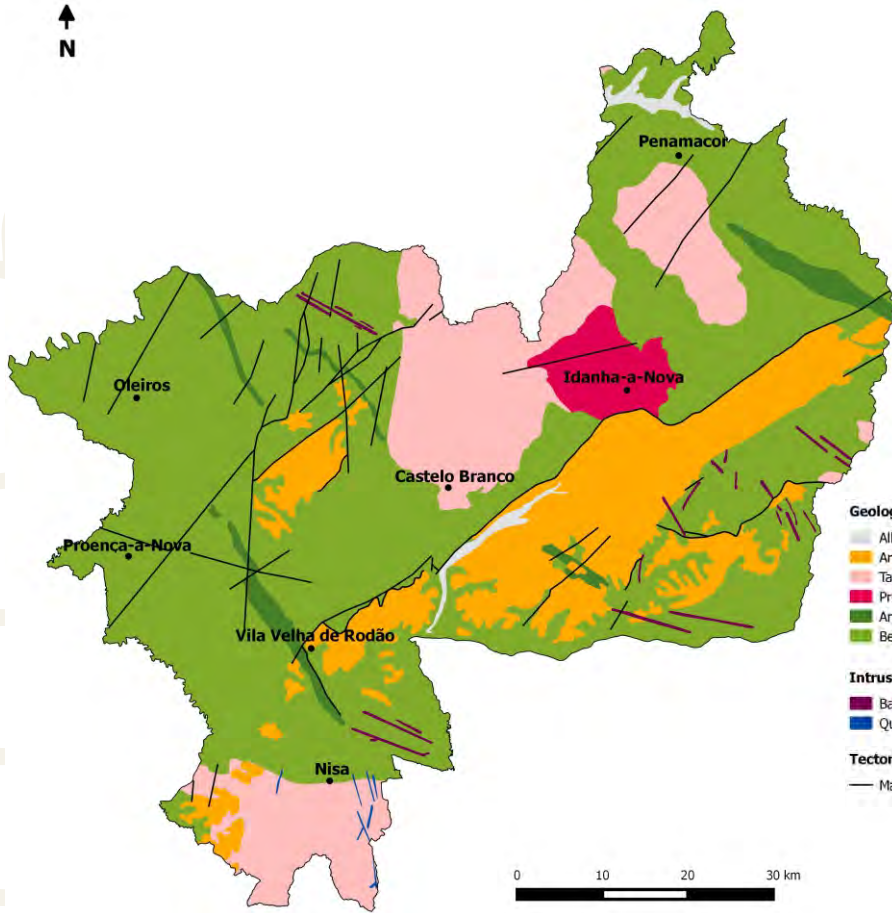
**22 OUTUBRO 2016 08:00**

PONTO DE PARTIDA: JUNTA DE FREGUESIA DE ESTRETO-VILAR BARROCO

CONTACTOS  
BERNARDINO: 966 092 787  
ROBERTO: 968 514 686  
geral@trilhosdoestreiro.pt

INSCRIÇÕES / INFORMAÇÕES:  
[www.trilhosdoestreiro.pt](http://www.trilhosdoestreiro.pt)  
[www.facebook.com/trilhos.doestreiro](http://www.facebook.com/trilhos.doestreiro)





#### Geological Formations (Ma-Million years)

- Alluvium and fluvial terraces - Pliocene-Holocene (1Ma-present)
- Arkoses, breccias and conglomerates - Eocene-Pliocene (50-2.6Ma)
- Tardi-Variscan orogenic granites (315-300Ma)
- Pre-Variscan granodiorites (480-472Ma)
- Armorican Quartzite and schists - Ordovician-Lower Silurian (488-435Ma)
- Beiras Group (schists and greywackes) - Neoproterozoic (610-542Ma)

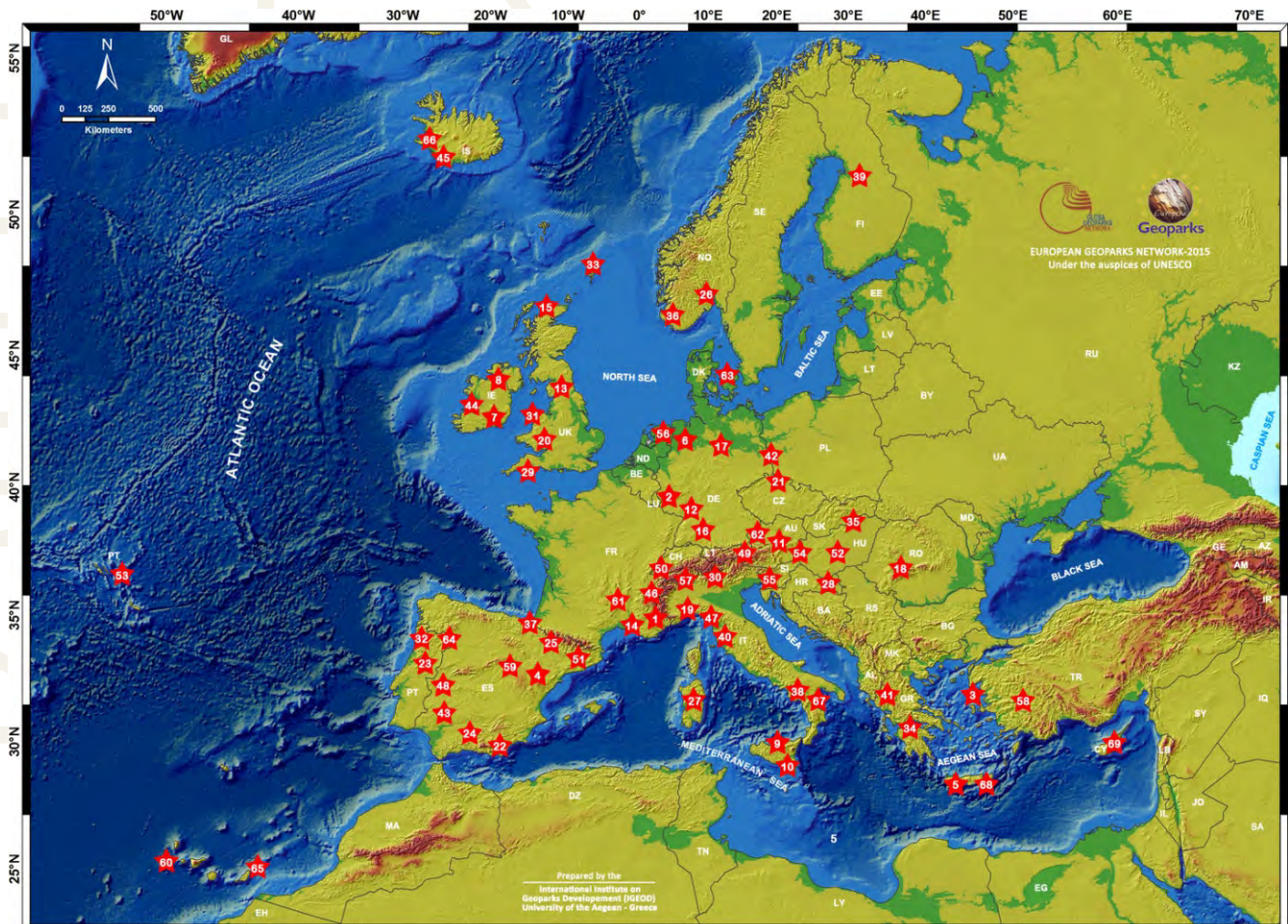
#### Intrusive rocks

- Basic rocks, aplites and pegmatites
- Quartz

#### Tectonic

- Main faults

## Geoparks: Geology with human face





Ficha técnica:

Edition - Geopark Naturtejo, 2016

Coordination - Carlos Neto de Carvalho

Texts - Carlos Neto de Carvalho, Joana Rodrigues,  
Manuela Catana e Hugo Oliveira, Município de  
Idanha-a-Nova, Territórios do Cão

Photos - Carlos Neto de Carvalho, Joana Rodrigues,  
Manuela Catana e Hugo Oliveira

Clipping - Alice Marcelo e Carla Jacinto

Translation - Carla Jacinto

Design - Layer [Design and Print Studio]

Editing - Joana Rodrigues



**CRUZIANA**

GEOPARK NATURTEJO DA MESETA MERIDIONAL EUROPEAN AND GLOBAL GEOPARK MONTHLY REPORT

[www.geoparknaturtejo.com](http://www.geoparknaturtejo.com)