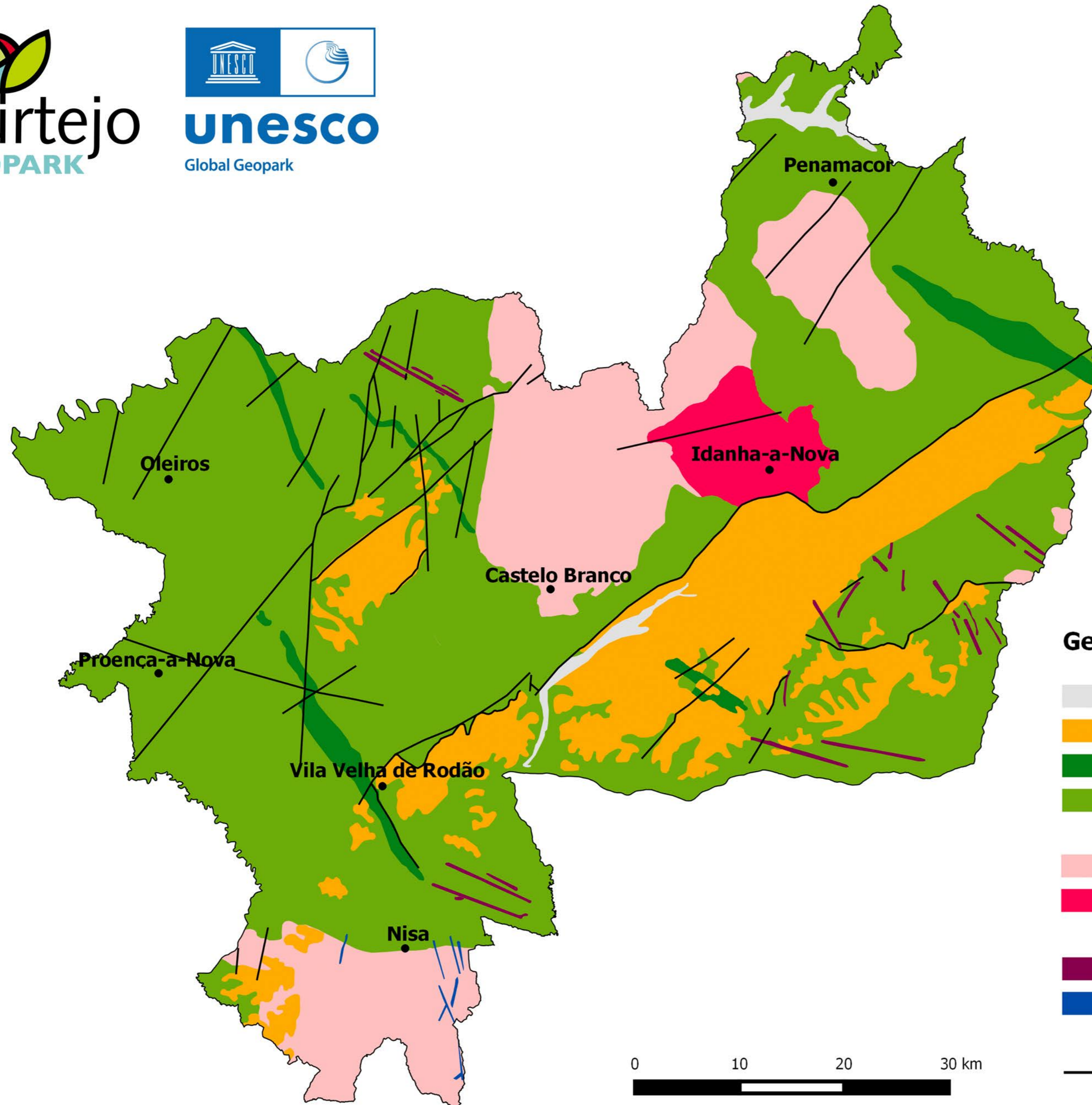


# Geological Map

## Naturtejo UNESCO Global Geopark



### Geological Formations

- Sand, clay and arkoses (1,8 MY - Present)
- Arkoses, breccias and conglomerates (50 - 1,8 MY)
- Quartzites and schists (488 - 435 MY)
- Schists and greywackes (610 - 542 MY)
- Granites (315 - 300 MY)
- Granodiorites (480 - 472 MY)
- Basic rocks, aplites and pegmatites
- Quartz veins

Faults

MY - Million Years