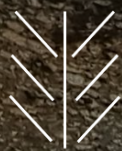
 #211

C R U

Z I A

N A



MAGAZINE

IN THIS ISSUE: Meeting of the Coordination Committee of the European Geoparks Network in Kula-Salihli | Presentation of Master's Thesis on Geochronology of the oldest rocks in Naturtejo Geopark | Visits to local and Spanish schools

THIS MONTH'S COVER

March cover brings us the legendary granite morphologies of the Serra d'Opa. The top of Serra d'Opa is full of granite landforms. Especially noteworthy are the pits resulting from the chemical weathering of coarse-grained granite. Marked by legends of enchanted Moorish women, these granite landforms are conditioned by the original crystallisation of the rocks from magma in the depths of the Earth's crust. The Troviscal Wind Farm project will be built in the area, which is expected to enhance the geological and archaeological heritage along Serra d'Opa. This is one of Naturtejo UNESCO Global Geopark Geomonuments.





01 MONTHLY ACTIVITIES..... 4

02 IMPACTE IN MEDIA..... 13

03 PROMOTION..... 17





01



MONTHLY ACTIVITIES

01

MONTHLY ACTIVITIES



March 6th to 9th - Meeting of the Coordination Committee of the European Geoparks Network in Kula-Salihli. The 49th Meeting of the Coordination Committee of the European Geoparks Network took place in the Kula-Salihli Geopark in Turkey. Naturtejo Geopark was represented by Armindo Jacinto and Carlos Neto de Carvalho, who played a very active role in both the European Geoparks Network Governance Working Group and the Tourism Working Group, which Naturtejo Geopark leads. A geotourism guide to European Geoparks is being developed under the coordination of Naturtejo Geopark.





March 6th - Workshop 'I live in Naturtejo Geopark' as part of the Living Science Club. This workshop, aimed at students from EB1 in Oleiros, Estreito and Orvalho, took place at the headquarters of the Oleiros School Group, as part of the activities of the School Group's Living Science Club. 90 students and 6 teachers attended. The instructor was Catarina Caria.



March 7th - Field trip 'The chaos of boulders at Monsanto granite Inselberg. The activity took place as part of the Portuguese course and was aimed at 29 students and 2 teachers from the 1st and 2nd ESO of the IESO Quercus (Instituto de Enseñanza Secundaria Obligatoria) in Malpartida de Plasencia, Cáceres, Spain. The instructor was Catarina Caria.



March 10th – Visit to Naturtejo Geopark. A group of 45 people from the Spanish Auriense Travel Agency visited the historic village of Monsanto, guided by Beiratours.

The screenshot shows a Zoom meeting interface. At the top, there are five video thumbnails of participants: Manuela Catana, Cristina Branquinho, Bruno Pereira, Estrela UGGP, and Susana Maria. Below the thumbnails is a green header with the text 'Diagnose Using space for time approaches'. The main content area features a diagram with the following text:

time
(e.g., decades, centuries) and associated climate change

space
(e.g., north to south) and associated climate shifts

The diagram consists of a grid of tree silhouettes. A dashed line curves across the grid, representing a climate shift over time and space. An arrow points upwards from the bottom-left towards the top-right, indicating the direction of time and climate change.

March 14th - Training session as part of the 2022-2023 Biennium for Climate Action entitled 'Climate Change and Agroforestry Systems'. This new action was aimed at technicians from the Portuguese Geoparks. Around 30 technicians from the various geoparks took part, including Manuela Catana.



March 14th - Field trip “The chaos of boulders at Monsanto granite Inselberg”, aimed at primary school pupils from Spain. The field trip took place as part of the Portuguese Language course and 21 students aged 6 to 10 and 2 teachers from La Acéquia Primary School in Cória, Puebla de Argeme, Spain, took part. The activity instructor was Catarina Caria.



March 15th - Field trip ‘Hidden Secrets in the Mourão Valley’, in Sobral Fernando. The activity took place as part of the Biology and Geology subject and was attended by 35 students and 2 teachers from the 10th and 11th grades of the Proença-a-Nova School Group. The monitor was Catarina Caria.





March 18th and 19th - Two-day educational programme. The Educational Programme was part of the Biology and Geology school discipline and 33 students and 2 teachers from the 10th, 11th and 12th grades of Alfredo da Silva School Group, Barreiro, attended. The instructor was Catarina Caria. The students visited the Portas de Ródão Natural Monument and the Fossil Trunks of Vila Velha de Ródão, as well as the Ichnological Park of Penha Garcia and the Monsanto Boulder landscape.

March 20th - Field trip 'Hidden Secrets in Mourão Valley', in Sobral Fernando. This activity was part of the Oleiros School Group's Living Science Club and took place in the context of the Natural Sciences and Biology and Geology subjects. 33 students and 2 teachers from the 7th and 10th grades took part. The teacher was Catarina Caria.





March 22nd - 'The importance of water' as part of World Water Day and World Forest Day. The Green Day was organised by the Penha Garcia Sporting Centre, which invited various organisations to promote activities and raise students' awareness on the importance of water and forest. Naturtejo Geopark was invited to address the theme 'The Importance of Water: the Case of the Ponsul River' and brought a special guest, who was much appreciated by the youngsters, the mascot Judite the Trilobite! A total of 30 students, teachers and educational assistants from the kindergartens of Penha Garcia and Termas de Monfortinho and from the EB1 of Penha Garcia took part in the activities. Representing Naturtejo Geopark in this activity was Catarina Caria.



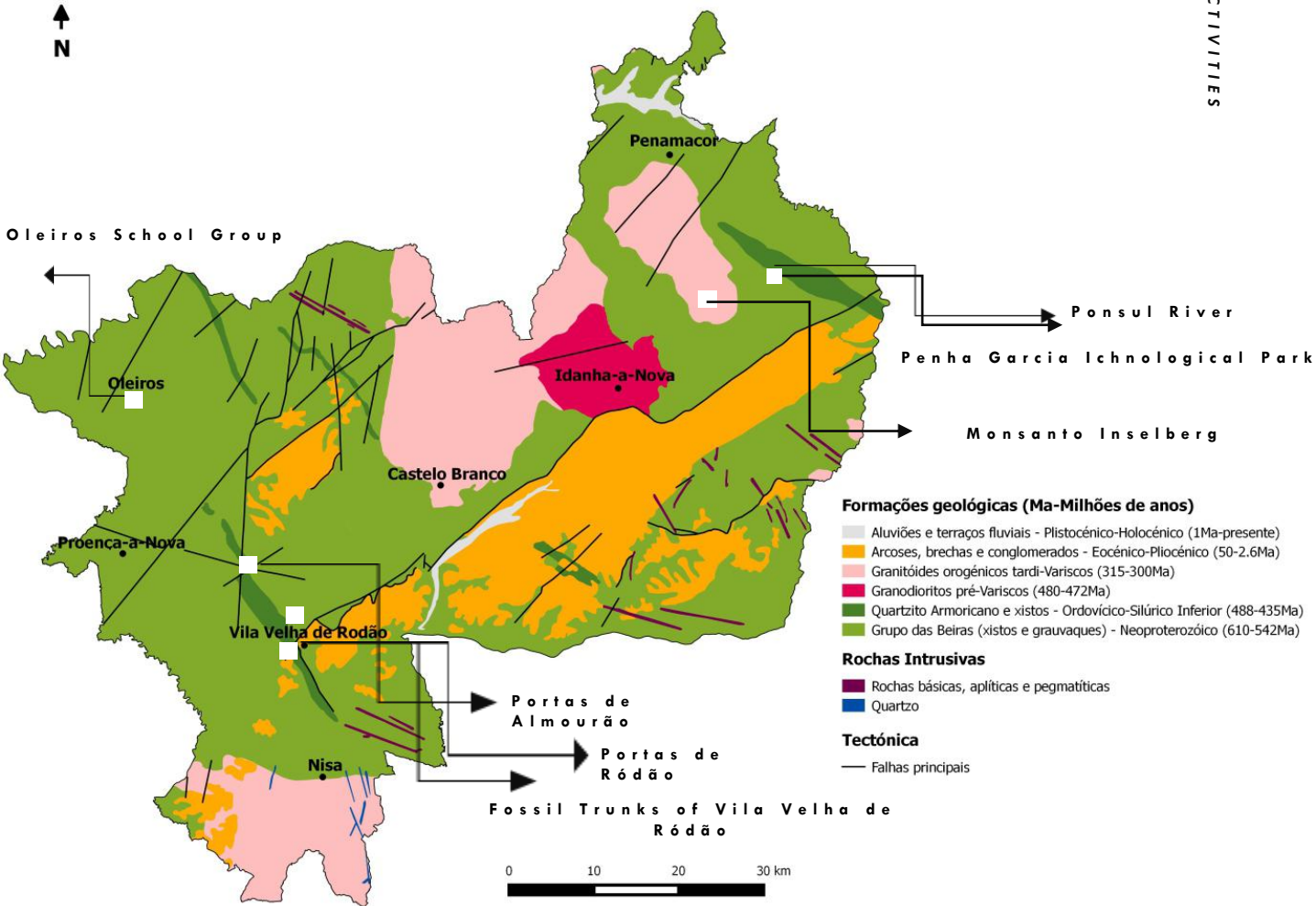


March 26th - Master's thesis presentation at the Faculty of Sciences in Lisbon.

Lourenço Crispim's thesis entitled 'The Ediacaran-Ordovician of Penha Garcia - Salvaterra do Extremo (Southwest of the Central Iberian Zone - ZCI). Palaeogeographic and Geodynamic Reconstruction and Contribution to the Conservation and Sustainable Development of the Naturtejo Geopark' was defended by the author with great success. The supervisors of this Master in Geology with a specialisation in Geochemistry, Mineralogy and Petrology, professors Martim Chichorro and Telmo Bento dos Santos, stressed the importance of this work for dating important events that occurred in the geological past of Naturtejo Geopark and which mark its landscapes.



ACTIVITIES LOCATION





02



IMPACT IN MEDIA

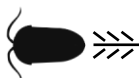
02

IMPACT IN MEDIA



TV & Radio

- March 5th (Beira Baixa TV) - Portugal on the Geoparks Route
- March 8th (Rádio Castelo Branco) - Portugal on the Geoparks Route presented at BTL
- March 11th (SALAMANCArtv AL DIA) - Getting to know Portugal through the new Geoparks Route
- March 18th (Beira Baixa TV) - Students from Spain visit Monsanto





Newspapers & www

March 1st (Diário Digital de Castelo Branco) - Proença-a-Nova: School group students take local products to BTL

March 4th (tintafresca.net) - Tourism programme on the Geoparks Route presented at the Lisbon Tourism Fair

March 4th (Gazeta Rural) - Students from the School Group take Proença products to BTL

March 4 (rodavivajornal_rouca) - Portuguese Geoparks launch 'Portugal on the Geoparks Route' tourism programme

March 5th (Diário Digital Castelo Branco) - Portugal on the Geoparks Route

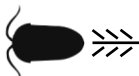
March 5th (Publituris) - Global Geoparks Network launches new tourism programme at BTL

March 5th (maisbeiras.sapo.pt) - Global Geoparks Network launches new tourism programme at BTL

March 5th (www.passear.com) - Portugal on the Geoparks Route | Tourism Programme

March 5th (www.sapo.pt) - Global Geoparks Network launches new tourism programme at BTL

March 5th (turisver.pt) - Tourism programme 'Portugal on the Geoparks Route' launched at BTL





Newspapers & www

March 5th (Diário dos Açores) - Azores present at the Geoparks Route Tourism Programme

March 6th (www.noticiasdeaveiro.pt) - Portuguese geoparks launch Portugal on the Geoparks Route tourism programme

March 6th (Gazeta Rural) - Global Geoparks Network turns 20 and launches 'Portugal on the Geoparks Route'

March 6th (viajarmagazine.com.pt) - Portuguese geoparks launch 'Portugal on the Geoparks Route' tourism programme

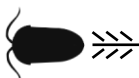
March 7th (BeiraNews) - Portugal on the Geoparks Route

March 9th (BeiraNews) - IDANHA-A-NOVA: Game of Thrones, Bio-Region and Raiana Fair were highlights at BTL

March 9th (rodaviva.pt) - Portuguese Geoparks launch 'Portugal on the Geoparks Route' tourism programme

March 9th (Descla) - Portugal on the Geoparks Route

28 March (Reconquista) - Idanha-a-1000 project receives support of 150,000 euros - Activities in all parishes all year round



4 | 5 | 6
ABRIL

3MG

MANAGING MEDITERRANEAN MOUNTAINS
AND GEOHERITAGE

Alterações Climáticas nos Geoparques Portugueses: Impactes na gestão florestal e no património geológico

Local: Auditório Municipal de Belmonte

Modalidade: Curso de Formação (acreditado pelo CCPFC)

Duração: 25 horas

Destinatários: Professores dos Grupos de Recrutamento 230, 420, 520, 560

Regime de Frequência: Presencial

Preço: Residentes nos geoparques portugueses (100€) | Não residentes (120€)

Informações e inscrições: www.geoparkestrela.pt/atividades | info@geoparkestrela.pt



03

PROMOTION TO THE GENERAL PUBLIC

2º CONCURSO DE FOTOGRAFIA GEOPARQUES PORTUGUESES

Categorias

- > Geodiversidade
- > Biodiversidade
- > Pessoas, Modos de Vida e Património Cultural

Datas

- > Abertura de submissão: 15-04-2024
- > Limite de envio: 30-06-2024
- > Divulgação dos Resultados: 19-08-2024
- > Entrega dos Prémios: 17-11-2024

Prémios

Duas noites, para 2 pessoas, num Geopark Mundial da UNESCO Português à sua escolha.
Por cada categoria, será atribuído um prémio à melhor fotografia.

Informações

Regulamento - Website de cada Geopark

Inscrição - geoparquesportugueses@gmail.com





RESILIAGE

Revolutionising
community resilience

“Cooperação local e Comunicação em Crises e Desastres Naturais para
Comunidades mais Resilientes”

Encontro Internacional Proença-a-Nova

22 e 23 de Abril no Centro Ciência Viva da Floresta

PROMOTION



Alcaide | 09h00

ALCAIDE, 1755 - QUANDO A TORRE RACHOU

MUSEU ARQUEOLÓGICO DO FUNDÃO

Consulte a programação em:
www.patrimoniocultural.gov.pt



18 Abril 2024 DIA INTERNACIONAL DOS MONUMENTOS E SÍTIOS

CATASTROFES E CONFLITOS
A LUZ DA CARTA DE VENEZA



GIARDINO OLEARUM DI VARIETA DI ULIVO DEL MEDITERRANEO

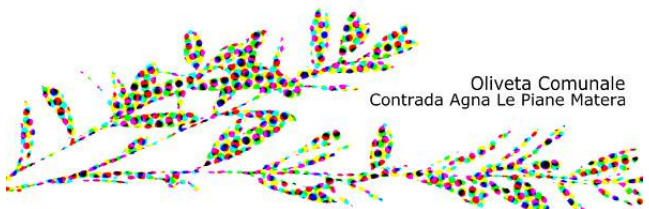
XV CONGRESSO INTERNAZIONALE OLEARUM cultura e patrimonio dell'olio di oliva

sabato 6 aprile 2024
ore 10:00

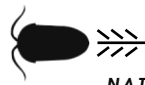
Piantumazione comunitaria del
Giardino Olearum

Presentazione dell'olio nuovo della
Comunità Oliveti Ritrovati Slow Food Matera

Musica del Ensemble **Suoni della tradizione**

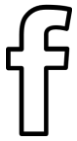


Oliveta Comunale
Contrada Agna Le Piane Matera





FOLLOW OUR ACTIVITIES



www.facebook.com/geoparknaturtejo.mesetameridional



www.instagram.com/geopark_naturtejo



www.linkedin.com/company/geoparknaturtejo/



[www.twitter.com/Geo Naturtejo](http://www.twitter.com/Geo_Naturtejo)



www.youtube.com/geoparknaturtejo/



www.issuu.com/geoparknaturtejo

WHO MAKES OUR MAGAZINE

Edition - Geopark Naturtejo, 2024

Coordenation - Carlos Neto de Carvalho

Texts - Carlos Neto de Carvalho, Manuela Catana, Carla

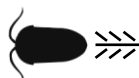
Jacinto

Photos - Manuela Catana and Carlos Neto de Carvalho,

Clipping - Carla Jacinto and Alice Marcelo

Translation - Carla Jacinto

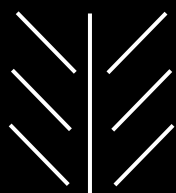
Design – Andrea Baucon



C R U

Z I A

N A



MAGAZINE

NATURTEJO.COM

