



In this issue:

Naturtejo Geopark in Strasburg Christmas
Naturtejo Geopark with Christmas celebrations across the territory
Opening of the Municipal Walking Trails Network of Penamacor
– Penamacor Vila Madeiro
...and more!

CRUZIANA

GEPARK NATURTEJO DA MESETA MERIDIONAL - UNESCO GLOBAL GEOPARK - E-MAGAZINE

GEO-stories of our places and people: Oledo

The wide Oledo valley extends from Quinta da Várzea to Cachouça. It is a clear fault-related valley, with asymmetric sheds, where the granitic rocks are seen to Torrinha, controlled by an orthogonal fault to the major Ponsul Fault. In its flat bottom stretches the Ribeira da Caniça, languid to its arrival at Ribeira de Alpreade. The entrance to this Valley, and consequently, in the Municipality of Idanha-a-Nova, occurs through a natural portal, consisting of two columns of granodiorite divided into small angular blocks, conical shaped, ending almost 70m above the plane. These natural castles, igneous rocks created in the depths of the Earth's crust about 490 million years ago, darkened by biotite and stannite, were temporary refuge to some of the early inhabitants of Oledo Valley, in the late Bronze Age. In the bottom of Cabeço de S. Gens, hidden in the vegetation which seeks to choke the river, arises a small bridge of one arch, very old. As old as the ancient ceramic traces found in Barros, traces of what may have been a large Roman Villa that the place name is not unrelated, fallen into oblivion. In the shadow of Barrocal da Figueira, rising slowly to 415 m, the highest point in the parish, with a total area of 27,67km², lays in the wider plan, along road 353, the village of Oledo. The old centre of this Order of Christ's land, later majorat, has a 17th Century origin, in the union of paths leading to numerous agricultural small villages marking Oledo's landscape. With its 355 inhabitants, is still nowadays a village marked by what is harvested in the vast fields. The heritage are the marks of agricultural regional planning work, sometimes crowned here and there with a fountain cut in granitoids. Here is possible to stay in local high quality accommodations and eat well in the restaurants. The territory and its vast network of ancient paths can be developed to MTB and walking trails allowing the visitors to enjoy this granitic landscape, with bush lands and oaks. At Christmas, Oledo Christmas Village dresses up in a confluence of tradition and requirement, in a celebration that attracts people from all over the municipality.

Bibliography

ANTUNES, I.M.H.R., SILVA, M.M.V.G. & CORFU, F. (1999) – The genesis of I- and S-type granitoid rocks of the Early Ordovician Oledo pluton, Central Iberian Zone (Central Portugal). *Lithos*, 111: 168-185.

ANTUNES, I.M.H.R., NEIVA, M.R. & SILVA, M.V.G. (2006) – Geocronologia e geoquímica de rochas granitoides do plutão de Oledo-Idanha-a-Nova (Centro de Portugal). In: J. Mirão & A. Balbino (eds.), *Livro de Resumos do VII Congresso Nacional de Geologia*, 1: 139-142.

The Editor
Carlos Neto de Carvalho
Scientific Coordinator
Geologist

Cover: (Projecto Objectiva: Geopark)



MONTHLY ACTIVITIES



December – Naturtejo Geopark at Strasbourg Christmas. All the objectives were met and all expectations surpassed, in the participation of Portugal in the Christmas Market in Strasbourg. According to the organization, Portugal was the best foreign participation in this market, in more than 500 years, at organization and innovation level. Naturtejo Geopark presented its territory in the “Portugal Natural” chalet, as well as its geoproducts and experiences. Along with António Galante and Joaquim Laranjo, from Municipality of Idanha-a-Nova, Joana Rodrigues from Naturtejo Geopark provided a valuable assistance to coordinate the Portuguese delegation of Village Portugais, ensuring the promotion of all Portuguese regions, unique flavours, local handicraft, music and all the logistic of a delegation with more than 83 participants coming from Portugal, living 35 days in Strasbourg were risen to the challenge. Every day, the Gutenberg Square was flooded with people from all corners of Europe and the world, making there a journey through Portugal, while also strengthening ties with the Portuguese in the diaspora. The 16 chalets of the Portuguese market were fully integrated in the Christmas Capital, with a total of 300 chalets spread over 12 emblematic of the Big Île of Strasbourg, without losing its Portuguese identity, in a demonstration of how we may well receive, while we're received, in an event visited by 2 million visitors, in a period of maximum security alert for terrorism. The authenticity of the landscapes, the tourism innovative products, the wines and liquors, the smoked sausages, cheese, bread, aromatic herbs, cosmetics, essential oils, clothes, handicrafts, “pastéis de nata”, coffee, honey, olive oil, codfish and many other products allowed to establish important partnerships and dynamics, that have already reaped rewards, with a direct impact in the regional and national economy that will continue into the future. A total of 75 tons of Portuguese products were sold, more that 20.000 flyers, around 20.000 “pastés de nata”, 500 bottles of organic wine, more than 2.000 litres of hot wine, more than 50.000 ham and cheese sandwiches and about 40.000 breads made live in wood fire and stone oven, an average of more than 1.000 a day. The Portuguese delegation also involved the Portuguese Rural Tourism Federation, Historical Villages, Natural.pt and Idanha-a-Nova - Creative City of Music. Naturtejo Geopark Geoproducts were represented in the market with Geoliquors Acha Doce and its acclaimed Hot wine “Vin du Bonheur” that conquered the public and was considered the best of the market, the Geoproducts Aromas do Valado, Geowine Súbito, Geocakes jams and handicrafts of VÓNô. These products were present in the several taste moments, which occurred in parallel, as well as several cultural events as music concerts, painting and photography exhibitions and Portuguese films.

The Portuguese market received the visit of the Mayor of Strasbourg, the Minister of Culture, the State Secretary of Portuguese Communities, several MEPs, diplomats from the permanent Portuguese Mission in the Council of Europe in France and the General Consulate of Portugal in Strasbourg, and also members of the European Court of Human Rights. The Portuguese and foreign media followed closely this participation, and a French journal had a front page headline "Portuguese invade Strasbourg". Highlight to the regular presence of the Portuguese delegation in the radio show "the Voice of Portugal" in RBS of Strasbourg, assured by the Portuguese Cultural Association of Strasbourg, every Sundays during the Fair period. This initiative was an opportunity to present internationally Idanha-a-Nova's products and services, as well as products from Serra da Estrela, Beira Baixa, Norte, Centro, Alentejo, Lisbon, Algarve and Islands. The shop window of Strasbourg Tourism Office was always decorated with a typical Portuguese Christmas basket, with a selection of some of the best Portuguese products, and also Geoproducts from Naturtejo Geopark. Armindo Jacinto, Mayor of Idanha-a-Nova coordinated this unprecedented initiative, along with the Deputy Mayor Fernanda Gabriel, from the municipality of Strasbourg.

2 to 30 December – Book Fair in Penamacor. In this Holiday Season, when schools are closed, the Municipality of Penamacor with Naturtejo Geopark supported a book fair, with the aim of promoting reading habits.

3 December - Celebration of the 10th anniversary of the Geological Interpretation Centre of Canelas. The Geological Interpretation Centre of Canelas celebrated its first decade serving knowledge and Portuguese Paleontological Heritage. Manuel Valério, Lúcia Figueiredo and their son hosted this event, attended by many local guests to present a document that summarizes the importance of the CIGC has to the UNESCO Geopark Arouca and for the dissemination of the geological heritage in Portugal. The Naturtejo Geopark, through its scientific coordinator Carlos Neto de Carvalho, attended for the partnership that has been developed over the years.

4 to 6 December – Tour by Naturtejo Geopark. The Spanish tour operator Mundo Amigo brought 23 people to visit Geopark territory, staying at Hotel Rainha D. Amélia in Castelo Branco.



7 to 11, 17 to 18, 23 to 25 December – Penamacor Christmas Tradition "Vila Madeiro". "Vila Madeiro" is a tradition and registered brand of Penamacor. This year the celebrations were amplified for almost a month with the support of Naturtejo Geopark. Since the arrival of "madeiro" (a large log) brought from different parts of the Municipality to warm the Christmas night near the Church, the celebrations have passed through the Exhibition "the largest Madeiro of Portugal", in front of the town hall, open to the public for two months, the Christmas market of Penamacor animated the streets of the village, the traditional Parade of Madeiro in Penamacor, the presentation of the children's book "Mimi and fairy Flora", ending with the Christmas concert in Penamacor. Also took place the III Horse Riding Vila Madeiro, and the first orienteering competition in the forest – Orimadeiro. In addition there were also environmental education and awareness activities organized by the Naturtejo Geopark, highlighted by the opening of the first small trekking path in the Municipality of Penamacor, an interpretation circuit around the village that includes some geosites. Finally, it was worth watching the ignition of the Madeiro in the transition from 23 to 24th.

That night, the countless visitors seeking heat with the latest Christmas shopping done in the traditional shops, at all the houses that sell liqueurs and other drinks or in houses filled with music and dance. Around midnight, the visitors head towards the small plaza in front of the Church, small for so many trunks, ascending to the roof of the building, and with many visitors from the farthest places. The fire spreads at midnight in the plaza where there is no more room for anyone. Fire fighters maintain local security. Meanwhile men start playing viola and concertina and sing unexpected songs here and there. Everyone drinks and the fire warms the wide hundreds of spectators. Dead trees serve as fuel for this night of joy. After all, Christmas is coming!



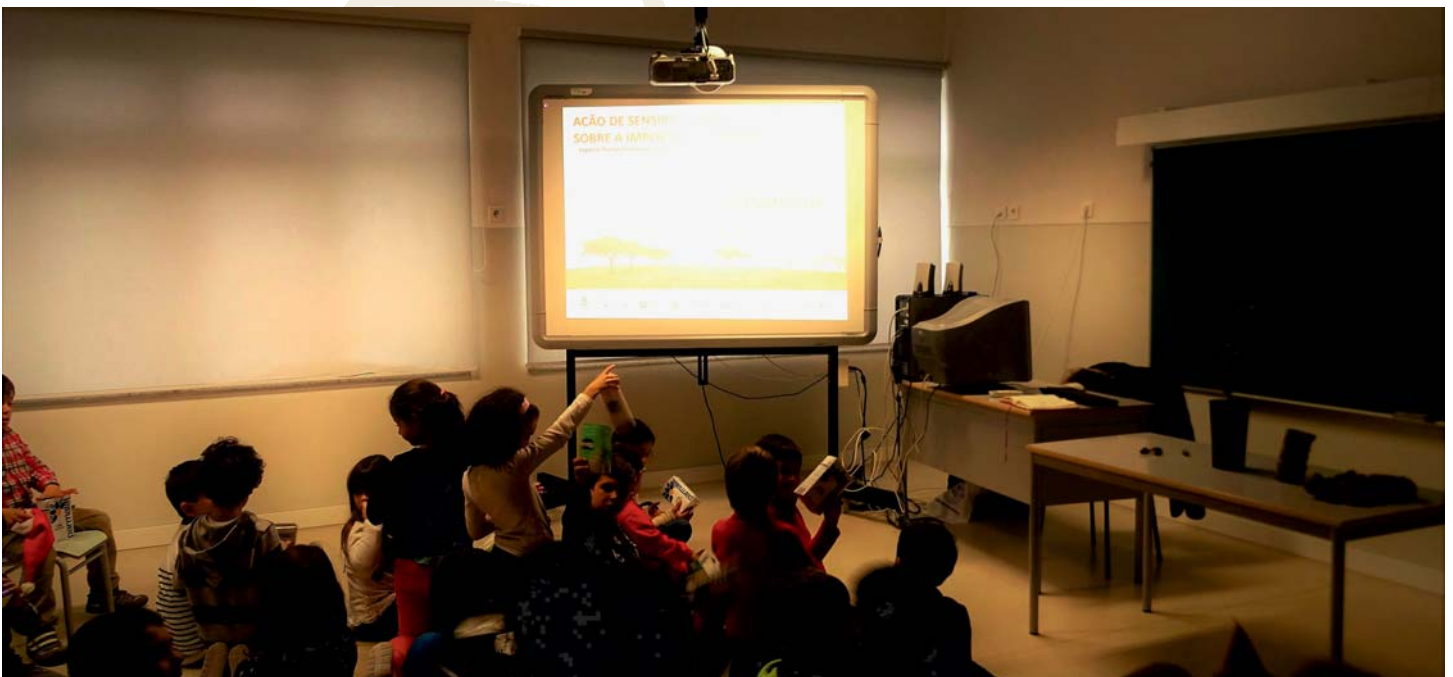
9 December – Orimadeiro – 1st Orienteering Competition in the Forest. The first orienteering Competition in the Forest organized by the Municipality of Penamacor, with Naturtejo Geopark support, took place in this historical village and Municipal Forest. Included in the Madeiro Festival, this event aimed to encourage young to develop a sport activity in the forest environment.

9 to 10 December – Programme by Naturtejo Geopark. The tour Guide Jorge Costa of Actigeo accompanied 46 people from Barcelos, on 5th December that held the following program: visit to the Ichnological Park of Penha Garcia; visit to the historical village of Idanha-a-Velha; visit to the historical village of Monsanto. On 10th December was the time for Nuno Coelho of Incentives Outdoor to join the group and visit the Rock Art Interpretation Centre of Vale do Tejo and conducted a boat trip in the magnificent Natural Monument of Portas de Ródão, one of 16 Geomonuments of Naturtejo Geopark.



10 to 11 December - Flavours with tradition in Idanha-a-Nova. The event Flavours with Tradition offered a weekend of animation, in Idanha-a-Nova, filling the old town with the Christmas spirit. The event was organized by the Municipality of Idanha-a-Nova, Union of Parishes of Idanha-a-Nova and Alcafozes and Clube União Idanhense, with Naturtejo Geopark support.

There were several reasons to go out. In addition to the flavours and traditional knowledge, there was music, rides and races, good gastronomy and the arrival of the traditional Baby Jesus' Madeiro. The 3rd São Silvestre race integrated the programme. With 300 athletes from all over the country, the race had a record participation and is already a reference in the region.



16 December - Awareness-raising action for cork oak – protected autochthonous forest species. Preschool and primary school Students of the School Group Ribeiro Sanches from Penamacor were invited to participate in this activity as part of Penamacor Vila Madeiro Programme – Christmas at the Forest. The awareness-raising action was supported by the Municipality of Penamacor and Naturtejo Geopark and the ICNF/ Nature Reserve of Serra da Malcata.

The action helps to ensure the sustainability of the Cork oak forest in the municipality given its close connection with the important tradition of Penamacor “The largest Madeiro of Portugal”. In the first part of the activity, as well as know the species Cork Oak and its Importance National Heritage were also presented the best practices to ensure its conservation. In this way with the intent to ensure the sustainability of the Cork oak forest and its preservation for future generations, the students learned the techniques to plant acorns, thus contributing to the nursery of indigenous Plants of the Natural Reserve of Serra da Malcata.



17 to 18 December – Music and Christmas Traditions in Oledo. Oledo Christmas Village is back! Christmas celebrations in this border village included Christmas folklore by Pedro Mestre, distinguished with the award Carlos Paredes 2016, a Great Magic afternoon, Christmas Circus and the thrilling closing concert, with Adufeiras from Oledo and Filarmónica Idanhense together on stage. Oledo dressed up, with Christmas performances, Christmas crib and Santa Claus house, elves workshop and traditional delicacies. Oledo Christmas Village also brought magic, ventriloquists, jugglers, trained animals and antiques fair. Besides having the largest national “rabanada” French toast, Oledo Christmas Village had also several traditions and Christmas flavours, with another “Music and Christmas Traditions”. During the weekend, several visitors could live all the magic of this event, enjoy the animation and make their Christmas shopping in more than 40 exhibitors. “We concentrated our Christmas traditions in Oledo, with a lot of music and fun for the whole family. At the same time, we boost our economy and culture, attracting visitors and taking further the name of Idanha”, said Armindo Jacinto, President of the Municipality of Idanha-a-Nova. Visitors get into the event groove. Among several Christmas performances and the first antiques fair, not even Santa Claus missed the call, distributing more than 100 gifts to the children who visited Oledo. The event was organized by the Municipality of Idanha-a-Nova and the Parish of Oledo, supported by Naturtejo Geopark.



18 December – Inauguration of the Trekking Network of the Municipality of Penamacor. The “PR1 – Trekking of Penamacor: Village Route” was inaugurated with the “1st Christmas Walking in the Forest”, as part of “Penamacor Vila Madeiro” programme; initiative of the Municipality of Penamacor, as part of Naturtejo Geopark territory.

In the Municipal Museum, established location in the Village Route as beginning and ending point of the route, the Group of 30 participants were received by the Deputy Mayor of Penamacor, Dra. Ilídia Cruchinho, highlighting the importance for the Municipality to establish a trekking network by the entire Municipality, aiming to raise awareness to residents and visitors to heritage in the surrounding area.

So, starting at the Municipal Museum, the group ran through the woods of the village, went to the Geosite "Miradouro da Casa do Ramalho"; next they visited "Minas do Palão". Then back to the Village, tasted local products next to the biggest "Madeiro" of Portugal. Resuming the journey toward the top of the village, the group went through the streets; paths lined with walls of old gardens filled with olive trees, where they might contemplate the centuries-old important monuments of the town. Special mention to the Castle of Penamacor – Main Tower, old Municipality, Clock Tower, Pillory, Mercy Church, São Tiago Church, Santo António Monastery, Memory House of Jewish Medicine António Ribeiro Sanches.



IMPACT OF GEOPARK IN MEDIA



Radio & TV

- 25 December (Rádio Castelo Branco) – Naturtejo Geopark present at Europe's Christmas
- 30 December (SIC - Best of "Ir é o Melhor Remédio") – Ichnological Park in Penha Garcia

Newspapers & www

- December (Notícias do Mar) – Tagus' Future is built now
- December (Notícias do Mar) – Alto Tejo and International Tejo Conference
- December (Raiano) – Naturtejo Geopark participates in ESTEAM Project Meeting, in Slovenia
- December (www.europeangeoparks.org) - Promotional action brings Naturtejo Geopark and partners to one-month Christmas celebration in Strasbourg
- 7 December (Reconquista) – Native Species Week marked with planting
- 20 December (Diário Digital) - Naturtejo Geopark at Europe's Christmas
- 21 December (Gazeta do Interior) - Naturtejo Geopark present at Europe's Christmas in Strasbourg
- 29 December (Reconquista Supplement) – Strasbourg surrendered to Portuguese Christmas

PROMOTION FOR THE GENERAL PUBLIC



- Catana, M.M. - Geopark Naturtejo participa em reunião do Projecto ESTEAM, na Eslovénia. Jornal Raiano - Por Terras do Concelho de Idanha. Ano XLIV - N.º 477 - 7 Dezembro. pp. 3.

- Neto de Carvalho, C. - Os contributos do CIGC para a internacionalização do Património Geológico português. In: Valério de Figueiredo, M. (Ed.), Geologia, história e arqueologia de mãos dadas. Centro de Interpretação Geológica de Canelas, Arouca, 5-8.

FORMAÇÃO SOBRE O GEOPARK NATURTEJO DA MESETA MERIDIONAL
Geoparque Mundial da UNESCO

PENAMACOR Auditorio da Escola de Música (ex-Quartel)
Coordenadas: 40°10'0.47"N, 7°40'14.84"W

JANEIRO 2017

23 24

INSCRIÇÕES
E-MAIL: geodiversidade@cm-penamacor.pt
TELEFONE: 277 354 905

HORÁRIO: 14h00 às 17h30
DESTINATÁRIOS: Empresários, profissionais de restauração, hotelaria, animação turística, artesanato e outros agentes locais interessados.

HORÁRIO: 9h00 às 12h30
DESTINATÁRIOS: Técnicos da área ambiente, turismo, cultura, ordenamento do território e outros agentes locais interessados.

INCLUI DOCUMENTAÇÃO DE APOIO E CERTIFICADO

Encontre o
GEOPARK NATURTEJO na

(Fitur)

18 - 22
Janeiro
2017

Feria Internacional de
Turismo



Stand
4C01

naturtejo
GEO-PARK



2017
INTERNATIONAL YEAR
OF SUSTAINABLE TOURISM
FOR DEVELOPMENT

PROMOTION FOR THE GENERAL PUBLIC



I CONGRESSO 2017 TURISMO "TERRAS DE CAVALEIROS" HUMANIZAR O TURISMO 27 e 28 Janeiro | Macedo de Cavaleiros

Organização:



Colaboradores:



Apoio:



ANO INTERNACIONAL DO TURISMO SUSTENTÁVEL O PAPEL DO TURISMO NA HUMANIZAÇÃO DOS TERRITÓRIOS AUDITÓRIO DO CENTRO CULTURAL DE MACEDO DE CAVALEIROS

Dia 27

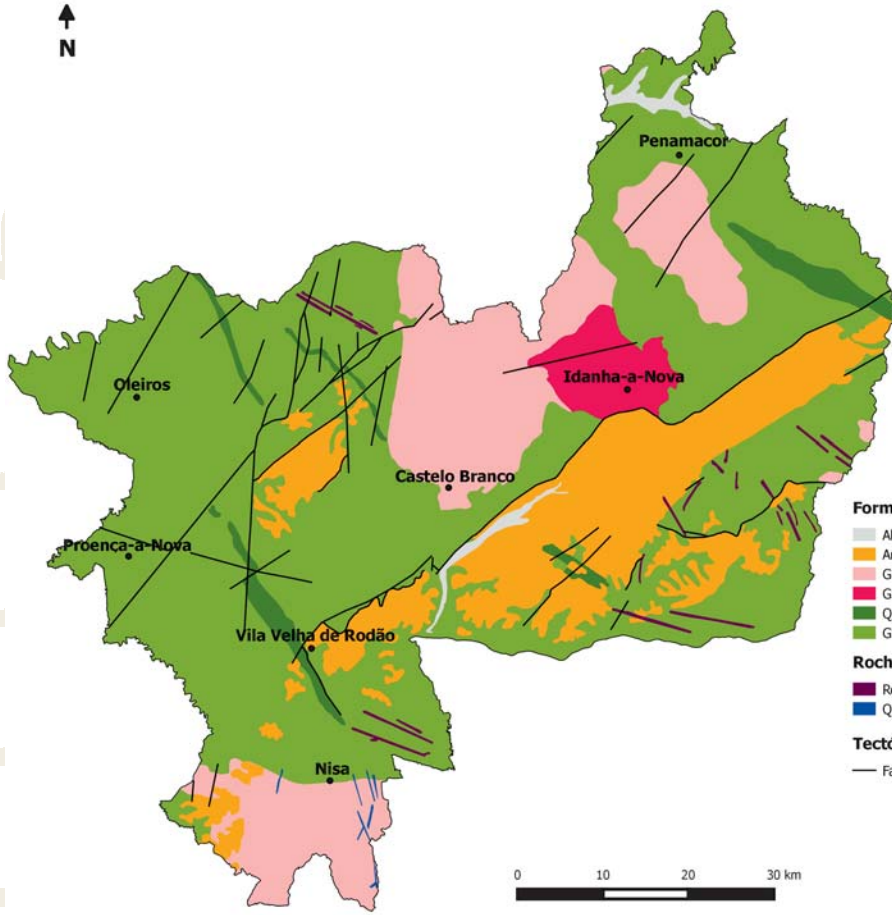
- 09H30 - 10H00 **Cerimónia de abertura**
 - * Ministro das Negociações Estrangeiras, Dr. Augusto Santos Silva*
 - * Secretária de Estado da Ciência, Tecnologia e Ensino Superior, Prof.ª Maria Fernanda Albuquerque*
 - * Presidente da Comissão Nacional da Unesco, Embaixadora Ana Marinho*
 - * Secretary of the International Geoscience and Geoparks Programme - UNESCO, Prof. Patrick J. Mc Keever*
 - * President of Global Geopark Network, Prof. Nikolaos C. Zouras*
 - * Presidente do Turismo de Portugal, Dr. Luís Araújo*
 - * Presidente do Turismo do Porto e Norte, Dr. António Moreira*
 - * Vice-Presidente da Comissão de Coordenação e Desenvolvimento Regional do Norte, Eng.º Ricardo Magalhães*
 - * Presidente da Câmara Municipal de Macedo de Cavaleiros e da Associação Geoparque Terras de Cavaleiros, Dr. Duarte Moreno
- 10H00 - 10H15 **"Programa Internacional de Geociências e Geoparques da UNESCO - IGGP"**
 - * Prof. Patrick J. Mc Keever - Secretário do IGGP
- 10H15 - 10H30 **"Rede Global de Geoparques"**
 - * Prof. Nikolaos C. Zouras - Presidente da Rede Global de Geoparques
- 10H30 - 10H45 **"Fórum Português de Geoparques"**
 - * Dr.ª Elizabeth Silva - Coordenadora do Fórum Português de Geoparques
- 10H45 - 11H00 **"PROGEO"**
 - * Prof. José Brito - Presidente da PROGEO
- 11H00 - 11H15 **Cátedra UNESCO "Geoparques, Desenvolvimento Regional Sustentado e Estilos de Vida Saudáveis"**
 - * Prof. Artur Sá - Coordenador da Cátedra UNESCO "Geoparques, Desenvolvimento Regional Sustentado e Estilos de Vida Saudáveis".
- 11H15 - 11H30 **Pausa**
- 11H30 - 11H45 **"Costa Vasca Geoparque Mundial da UNESCO"**
 - * Prof. Artur Sá - Coordenador da Cátedra UNESCO "Geoparques, Desenvolvimento Regional Sustentado e Estilos de Vida Saudáveis".
- 11H45 - 12H00 **"Terros de Cavaleiros Geoparque Mundial da UNESCO"**
- 12H00 - 12H15 **"Naturtejo da Meseta Meridional Geoparque Mundial da UNESCO"**
- 12H15 - 12H30 **"Arouca Geoparque Mundial da UNESCO"**
- 12H30 - 14H30 **Almoço Livre**
- 14H30 - 14H45 **"Açores Geoparque Mundial da UNESCO"**
- 14H45 - 14H55 **"Aspiring Geopark Estrela"**
- 14H55 - 15H30 **Debate e encerramento**
- 15H30 - 17H45 **Visita ao Geopark Terras de Cavaleiros**
- 18H00 **Volta à feira da coça**
- 19H30 **Jantar no feitor**

Dia 28

- 09:30h **Registo de Participantes**
- 10:00h **Abertura**
 - * Presidente da Câmara Municipal de Macedo de Cavaleiros
 - * Presidente do Turismo do Porto e Norte de Portugal
- 10:30h **I Painel**
 - Moderação: Susana Peixeira - Genie Mejera - Roda Onra Cero*
 - * Representante do IPB - Escola de Turismo
 - * Representante do ISMAI - Escola de Turismo
 - * Representante da Comissão Diocesana do Turismo
 - * Representante do Porto & Norte
- 11:30h **Debate**
- 12:00h **Almoço Livre**
- 15:00h **II Painel**
 - Moderação: Susana Ribeiro - Blog Viagem Corriga*
 - * Dr. Pedro Marques - Vereador da Câmara Municipal de Oliveira de Azeméis*
 - * Dra. Maria Lúcia Delgado - Vereadora da Câmara Municipal da Póvoa do Varzim*
 - * Dr. Adolfo Amílcar - Vereador da Câmara Municipal de Penafiel*
 - * Dr. José Alberto Freitas Soares Pinheiro e Silva - Presidente da Câmara Municipal de Vale de Cambra*
 - * Dr. Mário Nuno Alves de Sousa Neves - Vereador Câmara Municipal do Maia*
- 16:00h **Discussão com o público**
- 16:30h **Eixo Atlântico / Xoán Mao**
- 16:45h **Encerramento**
 - * Presidente da Câmara Municipal de Macedo de Cavaleiros - Duarte Moreno
 - * Presidente da Câmara Municipal de Puteaux - Joëlle Ceccaldi-Raynaud
 - * Diretor do Turismo de Portugal - Nuno Faustina
 - * Prémio Nobel da Literatura 2015 - Svetlana Alexievich*

* Em Coordenação: J. Cordeiro

PROGRAMA



Formações geológicas (Ma-Milhões de anos)

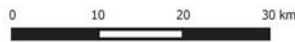
- Aluviões e terraços fluviais - Plistocénico-Holocénico (1Ma-presente)
- Arcoses, brechas e conglomerados - Eocénico-Pliocénico (50-2.6Ma)
- Granitóides orogénicos tardi-Variscos (315-300Ma)
- Granodioritos pré-Variscos (480-472Ma)
- Quartzito Armoricano e xistos - Ordovício-Silúrio Inferior (488-435Ma)
- Grupo das Beiras (xistos e grauvaques) - Neoproterozóico (610-542Ma)

Rochas Intrusivas

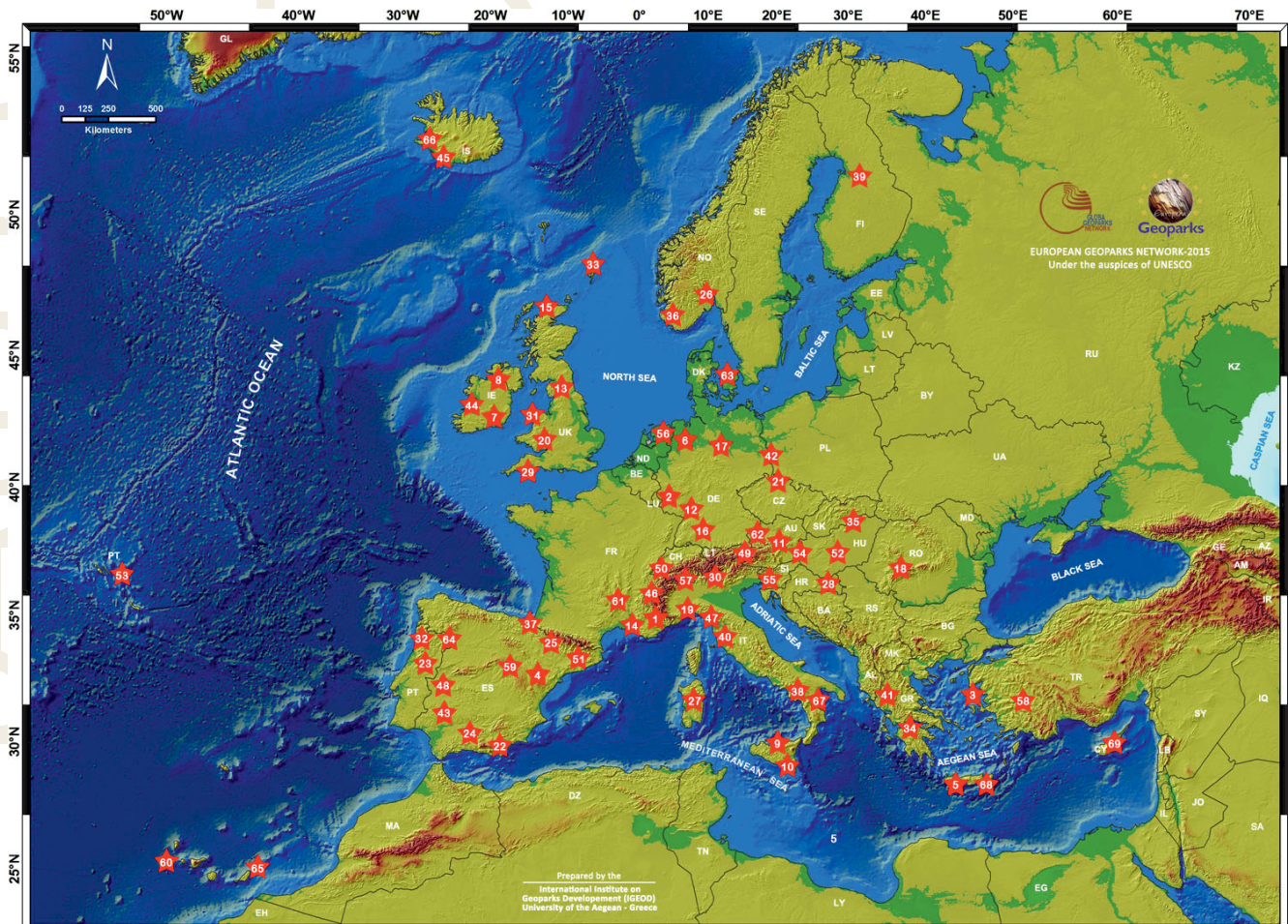
- Rochas básicas, apfíticas e pegmatíticas
- Quartzo

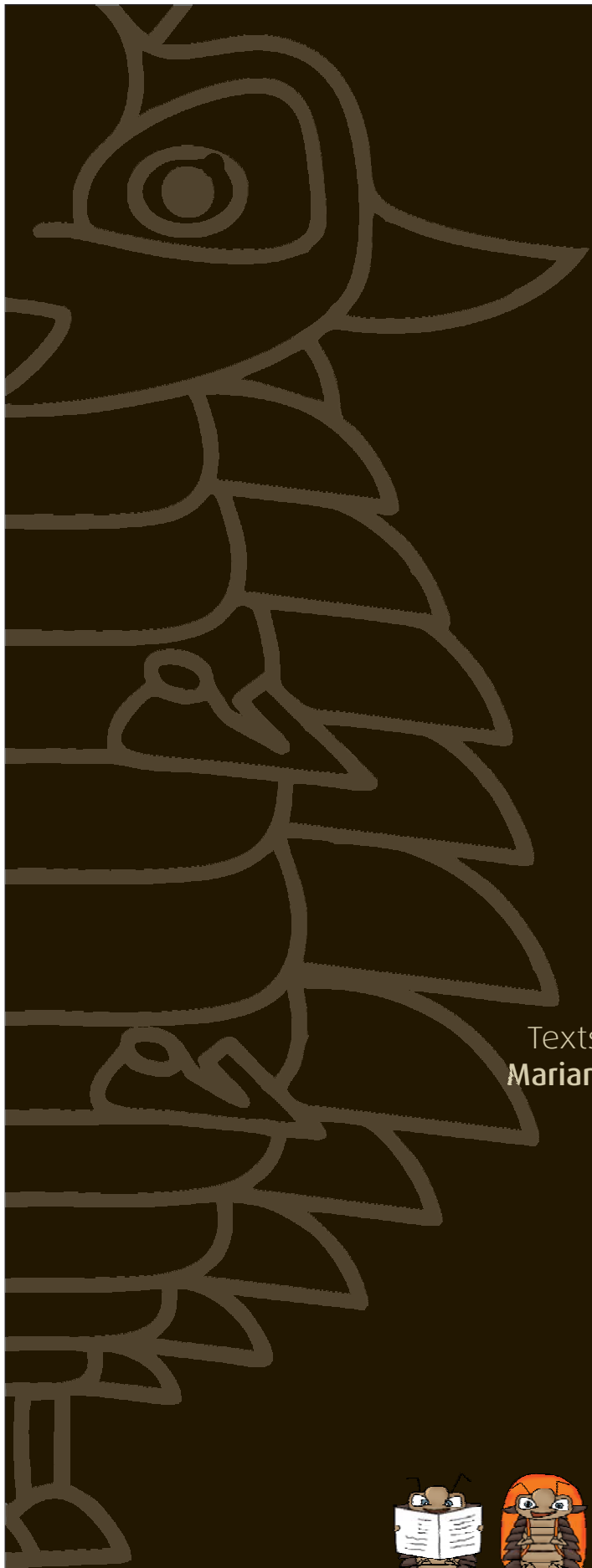
Tectónica

- Falhas principais



Geoparques: Geologia humanizada





Edition- **Geopark Naturtejo**, 2016
Coordination - **Carlos Neto de Carvalho**
Texts- **Carlos Neto de Carvalho, Joana Rodrigues,
Mariana Vilas Boas, Municipality of Idanha-a-Nova**
Photos - **Carlos Neto de Carvalho,
Joana Rodrigues, Mariana Vilas Boas**
Clipping - **Alice Marcelo e Carla Jacinto**
Translation - **Carla Jacinto**
Design - **Layer [Design and Print Studio]**
Editing - **Joana Rodrigues**



CRUZIANA

GEOPARK NATURTEJO DA MESETA MERIDIONAL-EUROPEAN AND GLOBAL GEOPARK MONTHLY REPORT

www.geoparknaturtejo.com